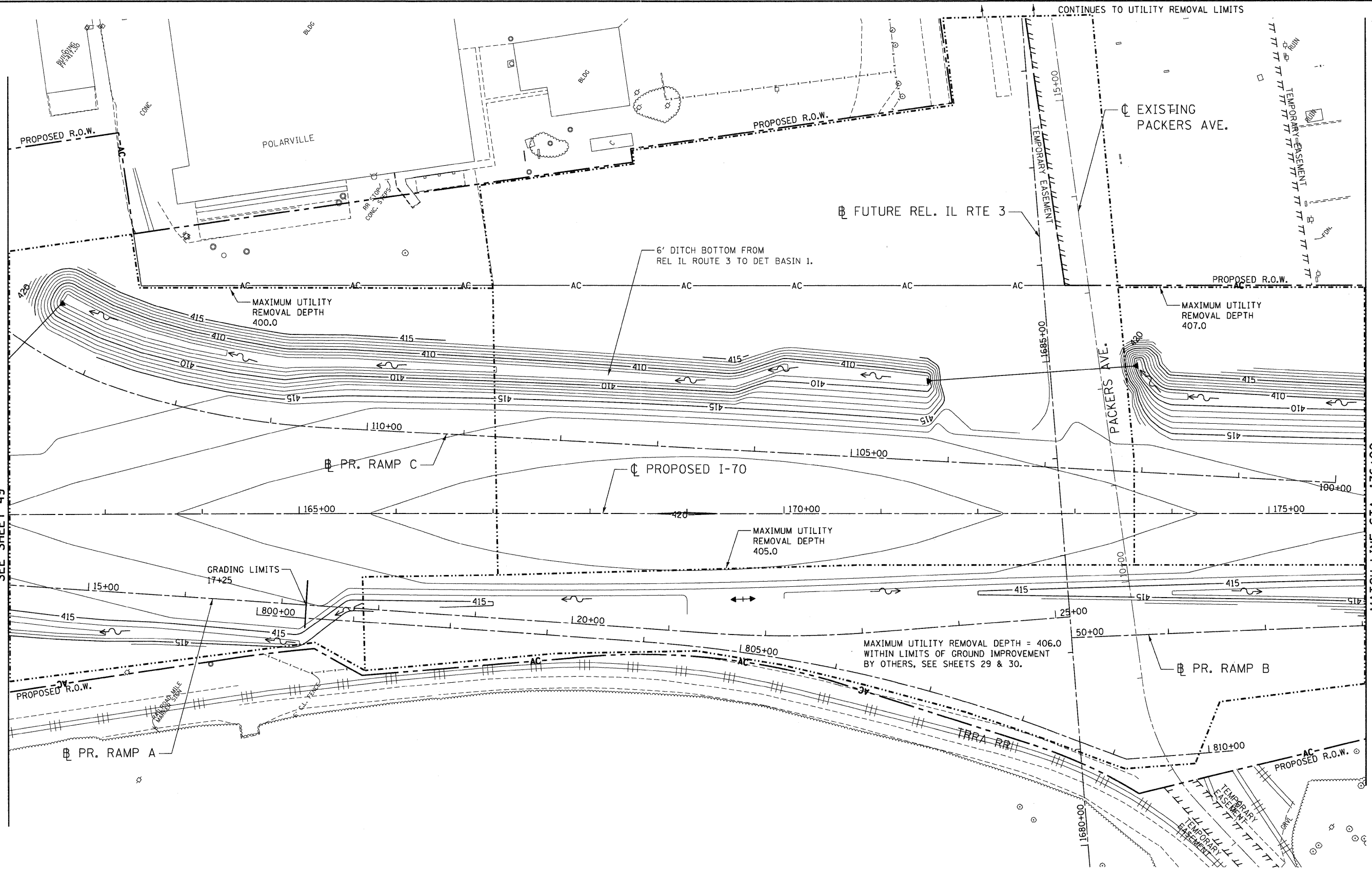


\DBCONN-96-MOTIFL.DGN, \DBCONN-96-BORDERL.DGN, \DBCONN-96-LAYOUTL.DGN, \DBCONN-96-MOTIFL.DGN, \DBCONN-96-EGENL.DGN, \DBCONN-96-MOTIFL.DGN, \DBCONN-96-SHT-LANDSCAPL-16200.DGN
 2-04-2011 16:02:57
 \F:\S-9244\AKAVALL\T-TRANS.07\2222\20888-201\CIVIL\CAD\99 ALL CONTRACTS\CONNS\96-SHTS\CONNS\96-SHT-LANDSCAPL-16200.DGN

MATCH LINE STA. 162+00
 SEE SHEET 49

MATCH LINE STA. 176+00
 SEE SHEET 51



FILE NAME =	USER NAME = #USER#
#FILEL#	
TENG & ASSOCIATES, INC. ENGINEERS/ARCHITECTS/PLANNERS CHICAGO, ILLINOIS	

DESIGNED - JB	REVISED -
DRAWN - JB	REVISED -
CHECKED - ACL	REVISED -
DATE - 02/04/11	REVISED -

PLOT SCALE = #SCALE#	
PLOT DATE = #DATE#	

STATE OF ILLINOIS
DEPARTMENT OF TRANSPORTATION
 I-70 CONNECTION

PROPOSED I-70	
PROPOSED GRADING PLANS	
STA. 162+00 TO STA. 176+00	
SCALE: 1"=50'	SHEET NO. OF SHEETS STA. TO STA.

F.A.P. RTE. 998	SECTION 82-1A	COUNTY ST. CLAIR	TOTAL SHEETS 190	SHEET NO. 50
FED. ROAD DIST. NO.		ILLINOIS FED. AID PROJECT		

CONTRACT NO. 76C41