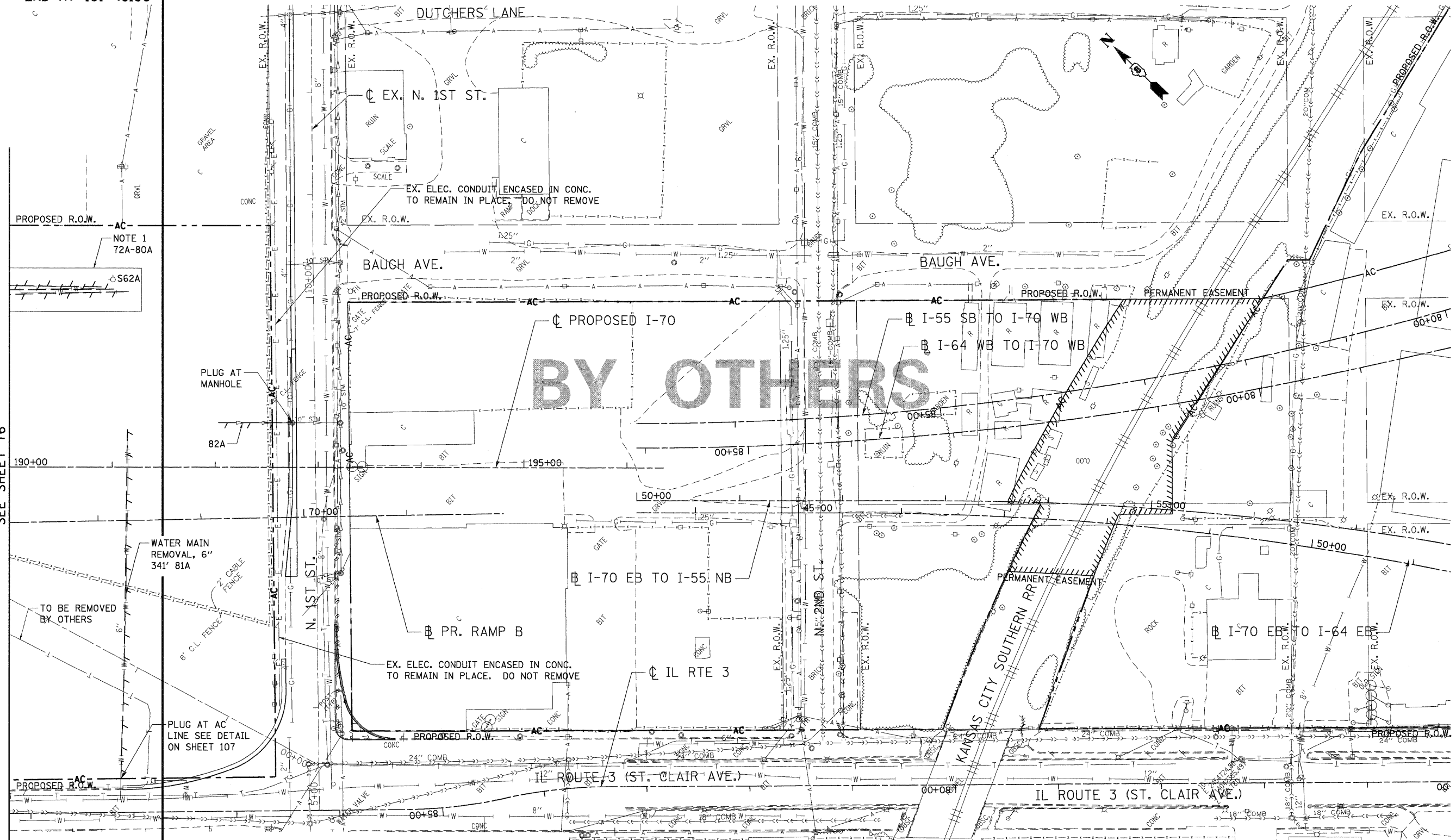
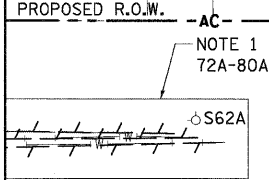


CONTRACT LIMITS
END AT 191+49.00

CONTRACT 76C50
BY OTHERS



MATCH LINE STA. 190+00
SEE SHEET 76



U:\BCONN-99-MOTIF.LODN., U:\BCONN-99-LAYOUT.LODN., U:\BCONN-96-LEGEND.LODN., U:\BCONN-86-MOTIF.LODN., U:\BCONN-83-GEOMETRICS.LODN., U:\BCONN-81-MOTIF.LODN., U:\BCONN-81-1617440.BOND.HUD, U:\FILES\8044\KANSASVILLE\TRANS\872282\2888-801\CIVIL\KANSASVILLE\CONTRACTS\CONTRACT_06\BCONN-96-SIT-DRN\TLL-19002.DGN

LEGEND

□	EX. INLET	—○—	EX. SANITARY SEWER	—CC—	COMBINED SEWER
○	EX. CATCH BASIN	—○—	EX. DITCH	—	LINEAR REMOVAL
⊙	EX. MANHOLE	—UNK—	UNKNOWN TYPE	S*X	STRUCTURE TO BE REMOVED (ALL REMOVALS THIS SHEET ARE PAID FOR AS UTILITY STRUCTURE REMOVAL OR FIRE HYDRANTS TO BE REMOVED, SEE SCHEDULE)
⊠	EX. HANDHOLE	—G—	EX. GAS MAIN	*X	EXISTING PIPE I.D.*
—W—	EX. STORM SEWER	—W—	EX. WATER MAIN		

NOTES:
 1. SEE SHEET 88 TO 95 FOR REMOVAL LENGTHS AND LOCATIONS.
 2. INCLUDED IN CONTRACT 76C41.

FILE NAME =	USER NAME = #USER#	DESIGNED - JB	REVISED -	STATE OF ILLINOIS DEPARTMENT OF TRANSPORTATION	PROPOSED I-70 EXISTING DRAINAGE & UTILITIES STA. 190+00 TO TRI-LEVEL			F.A.P. RTE. 998	SECTION 82-1A	COUNTY ST. CLAIR	TOTAL SHEETS 190	SHEET NO. 77
#FILEL#	PLOT SCALE = #SCALE#	DRAWN - JB	REVISED -		I-70 CONNECTION			SCALE: 1"=50'	SHEET NO. OF SHEETS	STA. TO STA.	FED. ROAD DIST. NO.	ILLINOIS FED. AID PROJECT
	PLOT DATE = #DATE#	CHECKED - ACL	REVISED -									
		DATE - 02/04/11	REVISED -									

