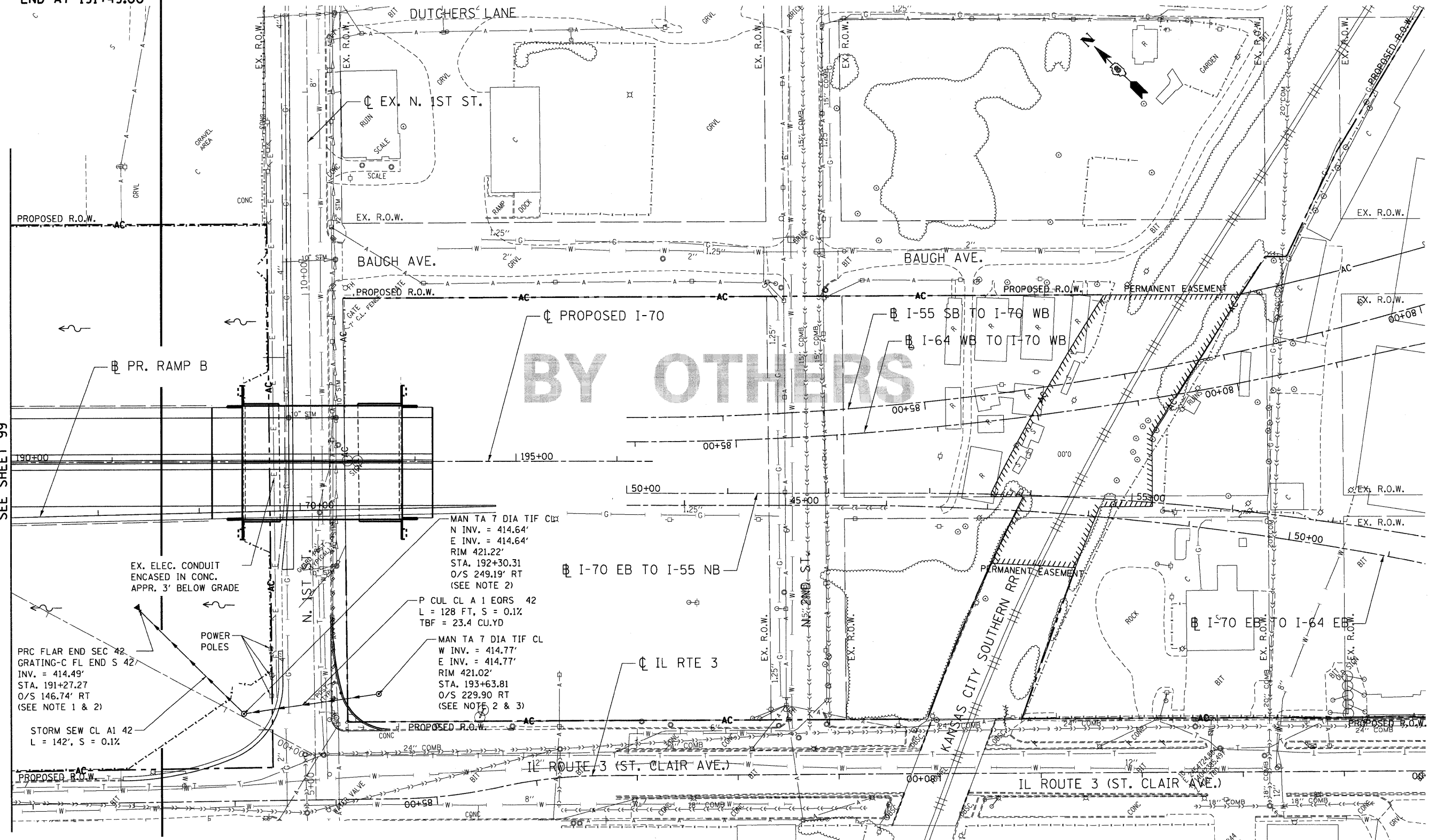


CONTRACT LIMITS  
END AT 191+49.00

CONTRACT 76C50  
BY OTHERS

MATCH LINE STA. 190+00  
SEE SHEET 99



**LEGEND**

□	EX. INLET	●	PROPOSED MANHOLE
○	EX. CATCH BASIN	▶	PROPOSED CULVERT END SECTION
○	EX. MANHOLE	— —	PROPOSED SWALE
— —	EX. STORM SEWER	↔	PROPOSED SUMMIT
— —	EX. SANITARY SEWER	↔	PROPOSED DITCH
— —	EX. COMBINED SEWER		

- NOTES:**
1. SEE SHEET 107 FOR END SECTION CALL OUT DETAIL.
  2. INCLUDED IN CONTRACT 76C41.
  3. THIS EAST INVERT PIPE WILL BE PLACED BY OTHERS IN CONTRACT 76C50
  4. STATION, OFFSET, AND RIM ELEVATION FOR DRAINAGE STRUCTURES ARE TAKEN FROM THE CENTER OF THE STRUCTURE

FILE NAME =	USER NAME = #USER#	DESIGNED - JB	REVISED -
#FILEL#		DRAWN - JB	REVISED -
	PLOT SCALE = #SCALE#	CHECKED - ACL	REVISED -
	PLOT DATE = #DATE#	DATE - 02/04/11	REVISED -

**STATE OF ILLINOIS  
DEPARTMENT OF TRANSPORTATION**

I-70 CONNECTION

**PROPOSED I-70  
PROPOSED DRAINAGE & UTILITIES  
STA. 190+00 TO TRI-LEVEL**

SCALE: 1"=50'

SHEET NO. OF SHEETS STA. TO STA.

F.A.P. RTE.	SECTION	COUNTY	TOTAL SHEETS	SHEET NO.
998	82-1A	ST. CLAIR	190	100
CONTRACT NO. 76C41				
FED. ROAD DIST. NO. ILLINOIS FED. AID PROJECT				

D:\CONTRACTS\99-MOTIFLOD.DWG; D:\CONTRACTS\99-MOTIFLOD.DWG; D:\CONTRACTS\99-MOTIFLOD.DWG; D:\CONTRACTS\99-MOTIFLOD.DWG; D:\CONTRACTS\99-MOTIFLOD.DWG; D:\CONTRACTS\99-MOTIFLOD.DWG; D:\CONTRACTS\99-MOTIFLOD.DWG; D:\CONTRACTS\99-MOTIFLOD.DWG; D:\CONTRACTS\99-MOTIFLOD.DWG; D:\CONTRACTS\99-MOTIFLOD.DWG

