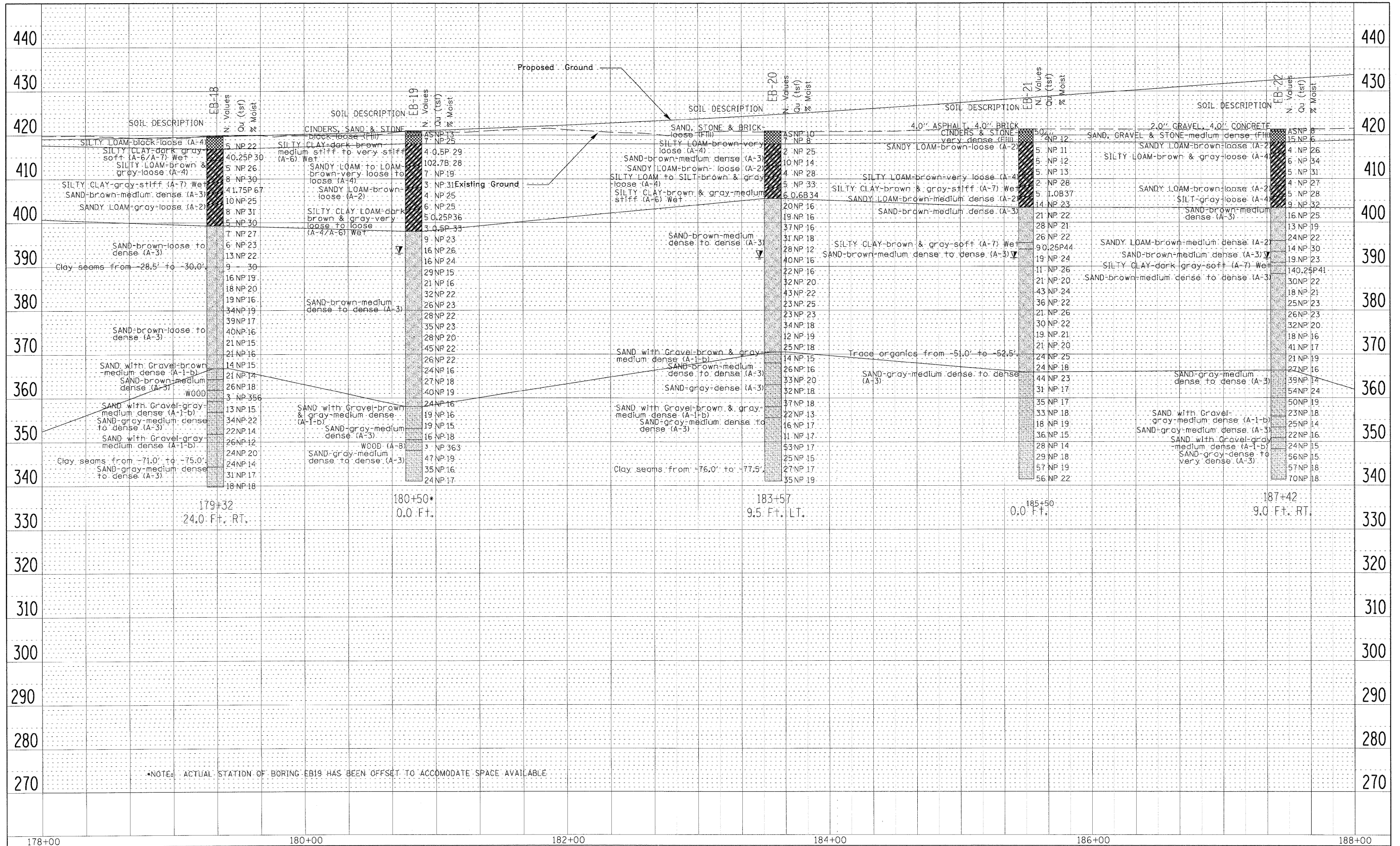


DATE: \_\_\_\_\_ BY: \_\_\_\_\_  
 REVIEWED: \_\_\_\_\_ PLOTTED: \_\_\_\_\_  
 ALIGNED: \_\_\_\_\_ CHECKED: \_\_\_\_\_  
 PLAN: \_\_\_\_\_ NOTE BOOK: \_\_\_\_\_  
 NO. \_\_\_\_\_

DATE: \_\_\_\_\_ BY: \_\_\_\_\_  
 REVIEWED: \_\_\_\_\_ PLOTTED: \_\_\_\_\_  
 GRADES: \_\_\_\_\_ CHECKED: \_\_\_\_\_  
 PROFILE: \_\_\_\_\_ NOTE BOOK: \_\_\_\_\_  
 NO. \_\_\_\_\_



\*NOTE: ACTUAL STATION OF BORING EB19 HAS BEEN OFFSET TO ACCOMMODATE SPACE AVAILABLE

FILE NAME =	USER NAME = @USER@	DESIGNED - TSR	REVISED - SMS 5/27/2010	<b>STATE OF ILLINOIS DEPARTMENT OF TRANSPORTATION</b>	<b>SOIL PROFILE</b>			F.A.I. RTE. 70	SECTION 82-2-1HVB-1	COUNTY ST. CLAIR	TOTAL SHEETS 190	SHEET NO. 128
*FILE#	PLOT SCALE = *SCALE*	CHECKED - MCM	REVISED -		SCALE:	SHEET NO. 6 OF 7 SHEETS	STA. 178+00 TO STA. 188+00	CONTRACT NO. 76C41		ILLINOIS FED. AID PROJECT		
	PLOT DATE = *DATE*	DATE - 06/01/2009	REVISED -									