

## SUMMARY OF QUANTITIES

SI	CODE NO.	ITEM	UNIT	TOTAL QUANTITY	100% STATE	
					ROADWAY	I-70 BRIDGE STR NO 082-0312 & 082-0313
					0001	0008
	X2070304	POROUS GRANULAR EMBANKMENT, SPECIAL	CU YD	680		680
	X2020410	EARTH EXCAVATION (SPECIAL)	CU YD	29,290	29,290	
	X6022820	MANHOLES, SANITARY, 5'-DIAMETER, TYPE 1 FRAME, CLOSED LID	EACH	2	2	
	X6026054	SANITARY MANHOLES TO BE REMOVED	EACH	1	1	
	X6640200	TEMPORARY CHAIN LINK FENCE	FOOT	543	543	
	X7010216	TRAFFIC CONTROL AND PROTECTION (SPECIAL)	L SUM	1	1	
	Z0013798	CONSTRUCTION LAYOUT	L SUM	1	1	
	Z0046304	PIPE UNDERDRAINS FOR STRUCTURES 4"	FOOT	296		296
	Z0048665	RAILROAD PROTECTIVE LIABILITY INSURANCE	L SUM	1	1	
	Z0068400	STEEL CASINGS 42"	FOOT	363	363	
	X5012503	CONCRETE REMOVAL, SPECIAL	L SUM	1	1	
	X0327310	COMBINED SEWERS, CLASS A, TYPE 2, 21"	FOOT	44	44	
	X0327311	COMBINED SEWERS, CLASS A, TYPE 7, 24"	FOOT	427	427	
	X0327269	COMBINED SEWER REMOVAL 18"	FOOT	205	205	
	X0327267	SLOPE INCLINOMETER	EACH	5	5	
	Z0076602	TRAINEES, SPECIAL	HOUR	3,500	3,500	
	Z0042000	PORE PRESSURE MEASUREMENT DEVICES	EACH	10	10	

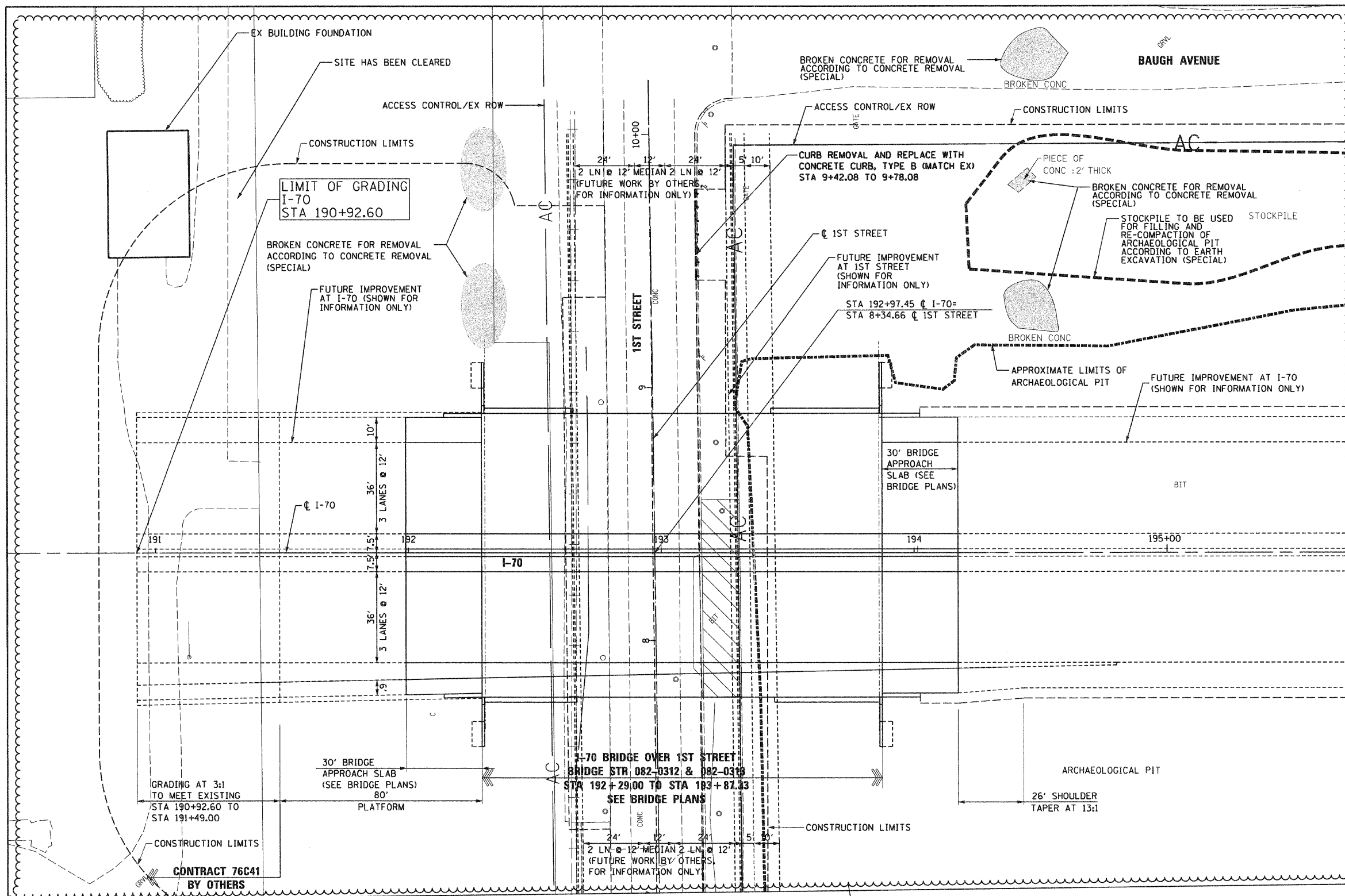


■ 0042

▲ ADDED PAY ITEM  
ADDENDUM 6-6-11

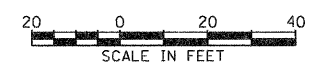
• DENOTES SPECIALTY ITEM

FILE NAME = DBTRI-76C50-ah-500-03.dgn	USER NAME = pmsarno	DESIGNED OP	REVISED -	<b>STATE OF ILLINOIS DEPARTMENT OF TRANSPORTATION</b>	<b>SUMMARY OF QUANTITIES</b>	F.A.P. RTE. 998	SECTION 82-1-2HB	COUNTY ST. CLAIR	TOTAL SHEETS 72	SHEET NO. 7
PLOT SCALE = 1:2000' / in.	CHECKED DBM	DATE 03-18-11	REVISED -	SCALE: NONE	SHEET NO. 3 OF 3 SHEETS	FED. ROAD DIST. NO.	ILLINOIS FED. AID PROJECT	CONTRACT NO. 76C50		



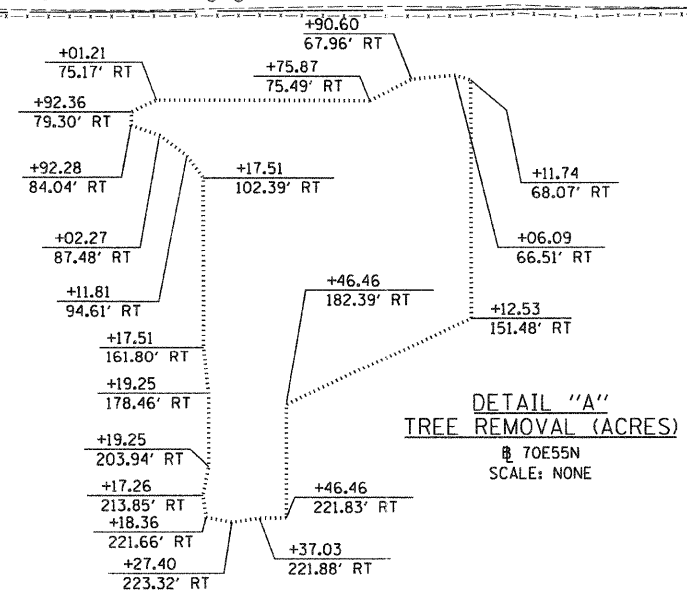
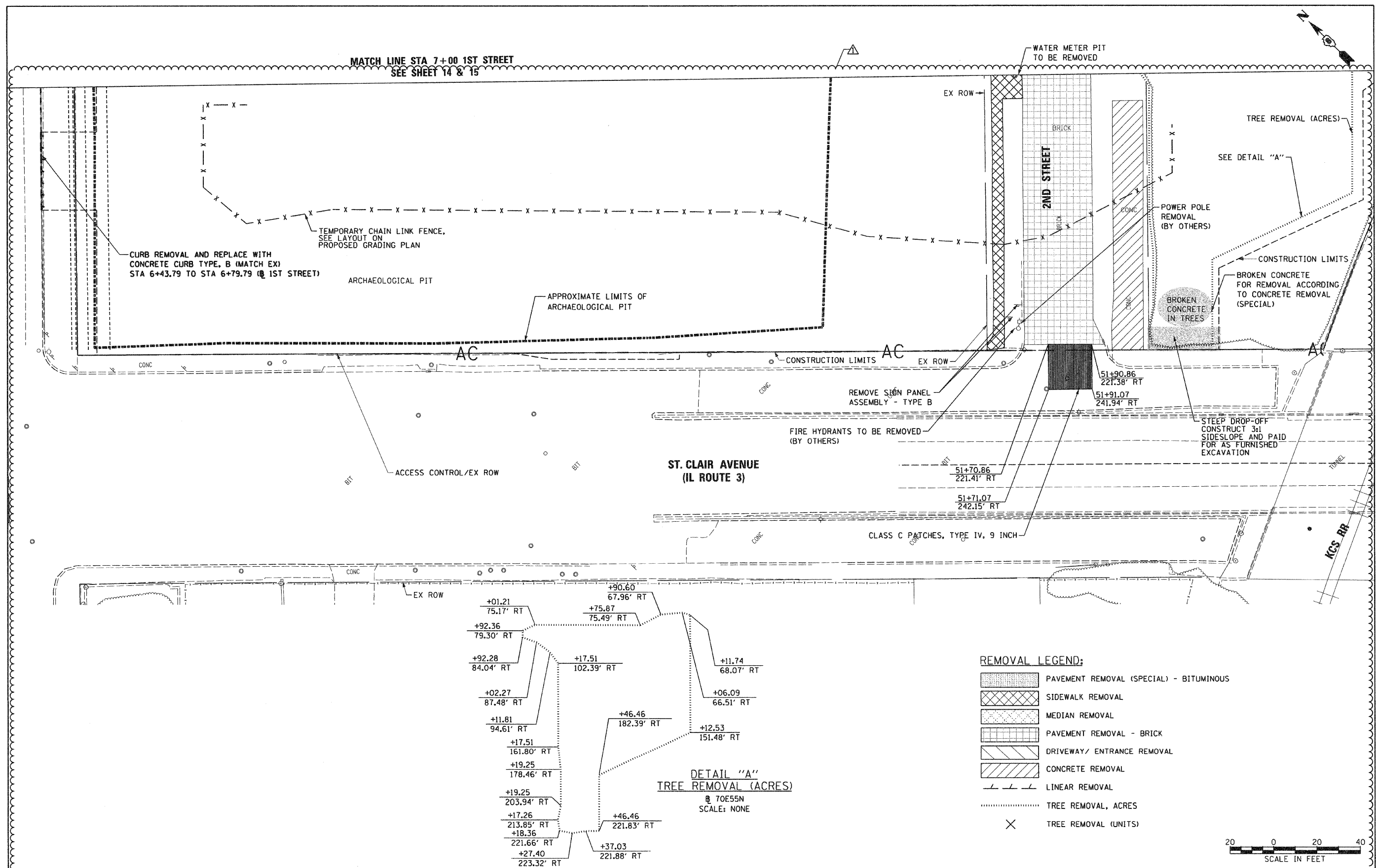
**REMOVAL LEGEND:**

	PAVEMENT REMOVAL - BITUMINOUS (BY OTHERS, CONTRACT 76E09)
	SIDEWALK REMOVAL
	MEDIAN REMOVAL
	PAVEMENT REMOVAL - BRICK
	DRIVEWAY/ ENTRANCE REMOVAL
	CONCRETE REMOVAL
	LINEAR REMOVAL
	TREE REMOVAL, ACRES
	TREE REMOVAL (UNITS)

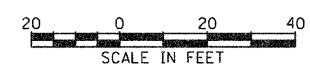


FILE NAME = DBTRI-76C50-shr-plan-01.dgn	USER NAME = pmsarrio	DESIGNED OP	REVISED  - ADDENDUM 6/6/11	<b>STATE OF ILLINOIS DEPARTMENT OF TRANSPORTATION</b>	<b>PROPOSED ROADWAY &amp; REMOVAL PLAN I-70</b>	F.A.P. RTE. 998	SECTION 82-1-2HB	COUNTY ST. CLAIR	TOTAL SHEETS 72	SHEET NO. 14		
	PLOT SCALE = 40.0000' / in.	DRAWN PHP/OP	REVISED -			SCALE: 1"=20'	SHEET NO. 1 OF 3 SHEETS	STA. 190+92.60 TO STA. 195+75.00	CONTRACT NO. 76C50			
	PLOT DATE = 5/26/2011	CHECKED DBM	REVISED -			FED. ROAD DIST. NO. ILLINOIS FED. AID PROJECT						
		DATE 03-18-11	REVISED -									





- REMOVAL LEGEND:**
- PAVEMENT REMOVAL (SPECIAL) - BITUMINOUS
  - SIDEWALK REMOVAL
  - MEDIAN REMOVAL
  - PAVEMENT REMOVAL - BRICK
  - DRIVEWAY/ ENTRANCE REMOVAL
  - CONCRETE REMOVAL
  - LINEAR REMOVAL
  - TREE REMOVAL, ACRES
  - TREE REMOVAL (UNITS)



FILE NAME = DBTR-76C50-shr-plan-23.dgn	USER NAME = pmsarno	DESIGNED OP	REVISED $\Delta$ - ADDENDUM 6/ 6/11	<b>STATE OF ILLINOIS DEPARTMENT OF TRANSPORTATION</b>	<b>PROPOSED ROADWAY &amp; REMOVAL PLAN I-70</b>		F.A.P. RTE. 998	SECTION 82-1-2HB	COUNTY ST. CLAIR	TOTAL SHEETS 72	SHEET NO. 16
	PLOT SCALE = 40,0000' / 1" =	DRAWN PHP/OP	REVISED -		SCALE: 1"=20'	SHEET NO. 3 OF 3 SHEETS	STA. 7+00.00 TO STA.	FED. ROAD DIST. NO.	ILLINOIS FED. AID PROJECT	CONTRACT NO. 76C50	
	PLOT DATE = 5/26/2011	CHECKED DBM	REVISED -								
		DATE 03-18-11	REVISED -								