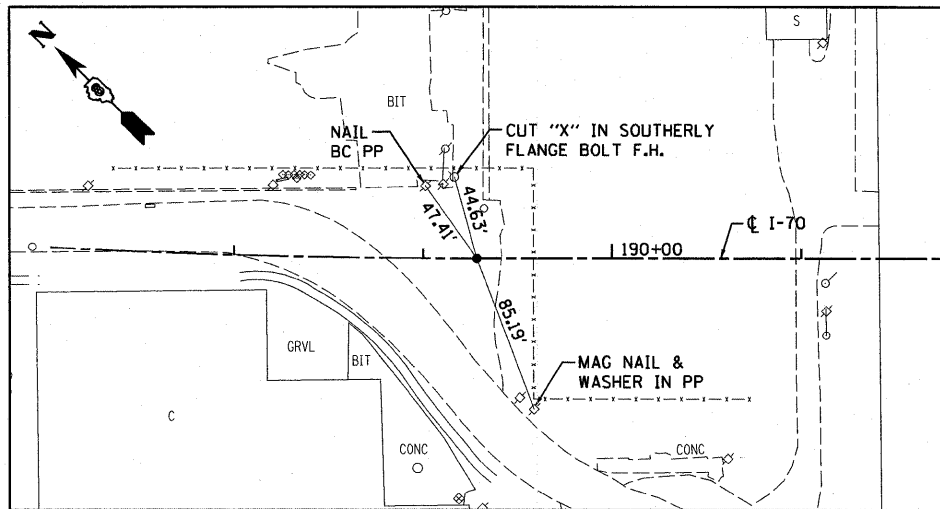
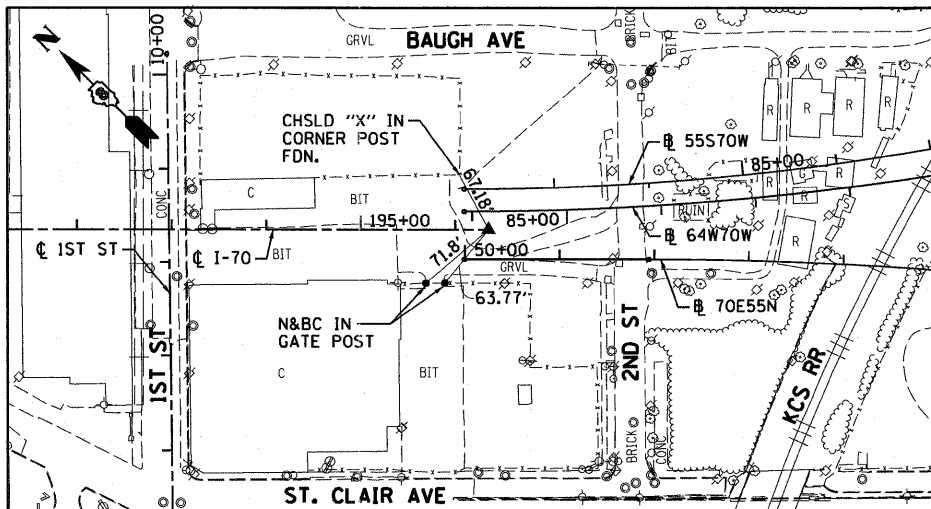


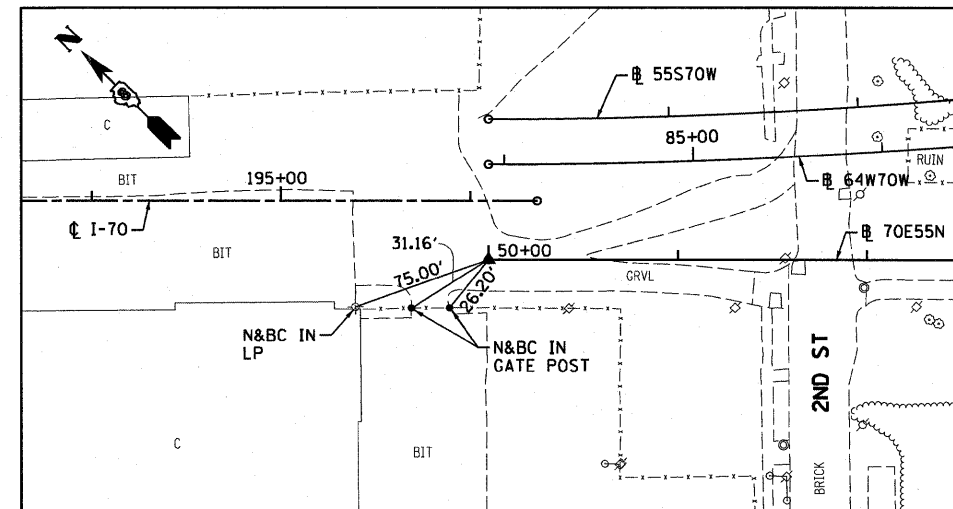
I-70
PT STA 189+28.42
COTTON SPINALE INSIDE CHSLD "X" IN BIT



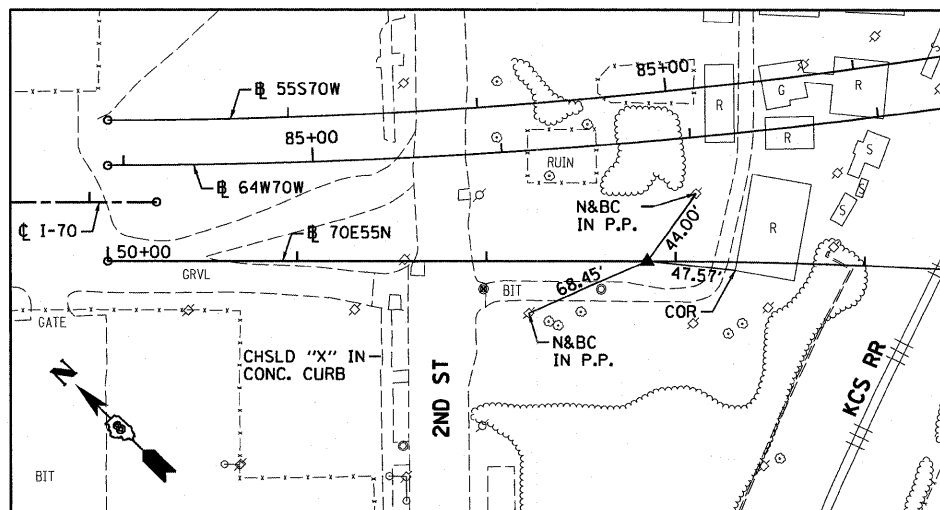
I-70
POT STA 196+35.37
SET 5/8" REBAR W/REDCAP FLUSH W/GR



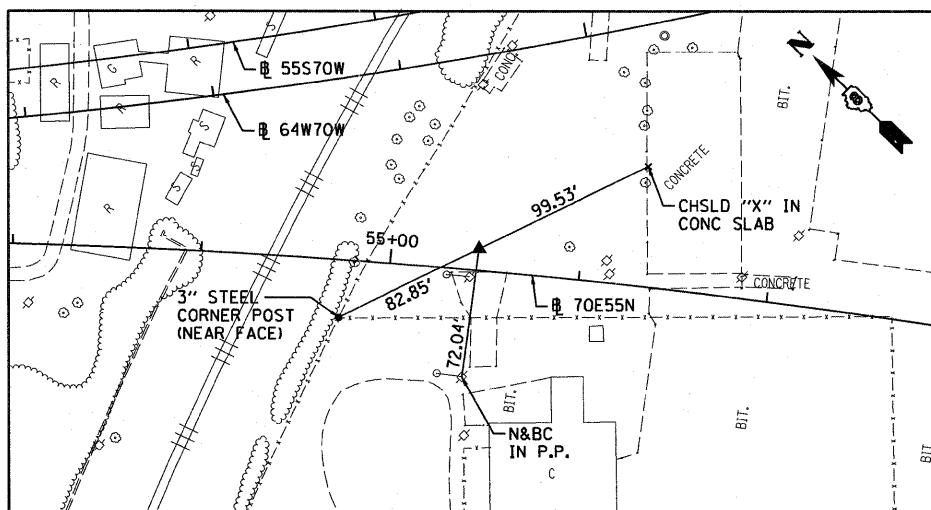
70E55N
POT STA 50+00.00
SET MAG NAIL IN BIT



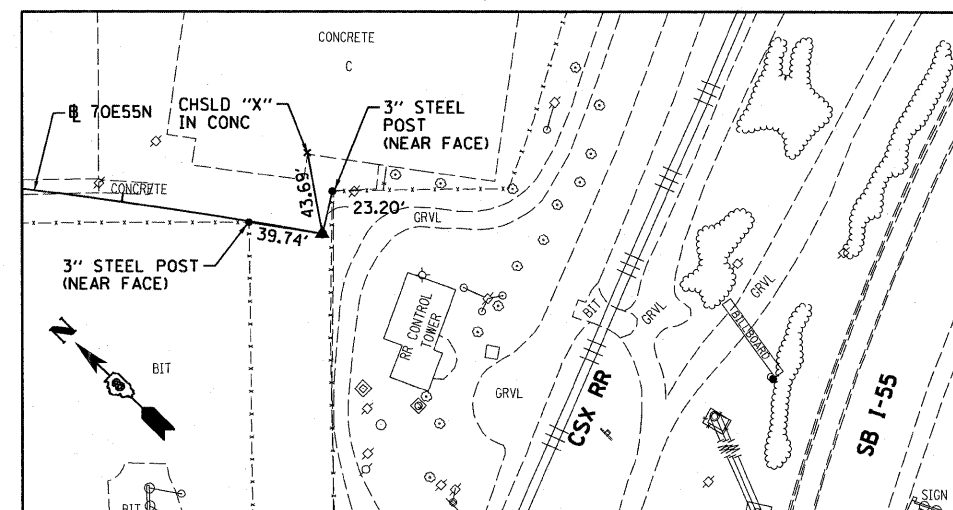
70E55N
PC STA 52+85.08
5/8" I. PIN W/YELLOW CAP



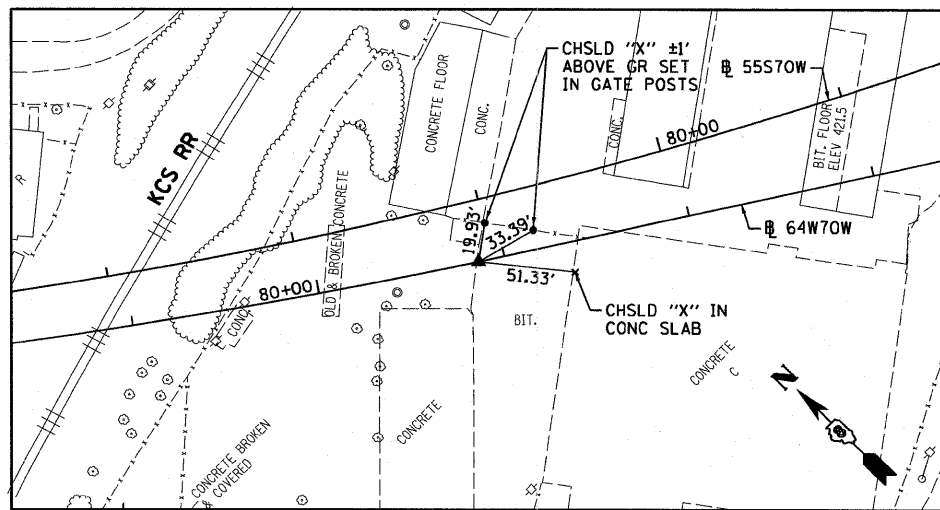
70E55N
PI STA 55+46.88
5/8" I. PIN W/YELLOW CAP



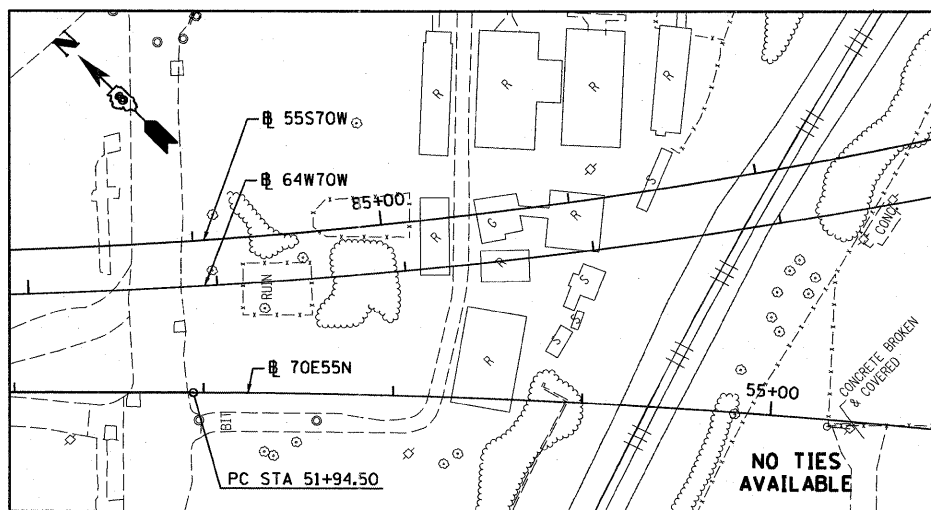
70E55N
PT STA 58+07.32
SET MAG NAIL IN BIT LOT



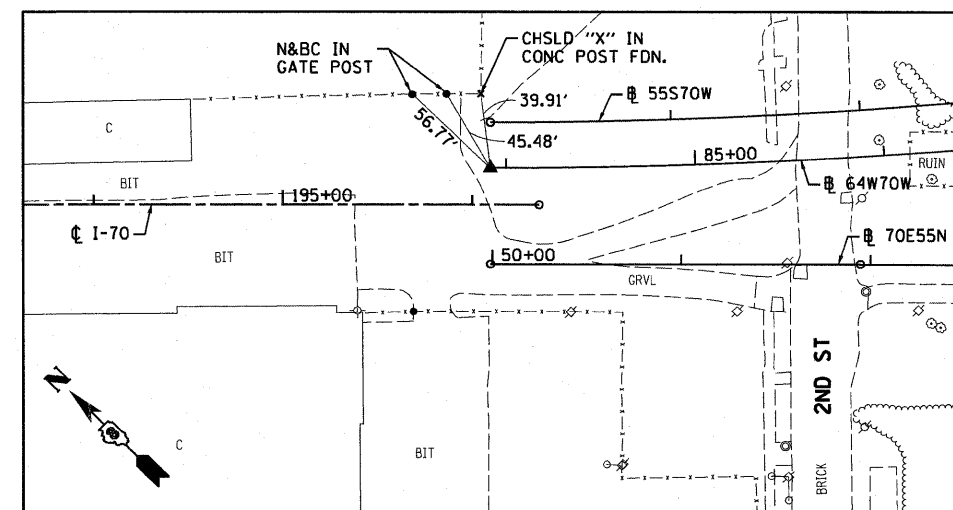
64W70W
PC STA 79+13.90
SET 5/8" REBAR W/RED CAP FLUSH W/GR



64W70W
PI STA 82+62.48



64W70W
PT STA 86+08.31
SET 5/8" REBAR W/RED CAP FLUSH W/GR



FILE NAME = DBTRI-76C50-shr-ATB-02.dgn

USER NAME = searsb

DESIGNED OP

REVISED -

PLOT SCALE = 100.0000' / in.

DRAWN PHP/OP

REVISED -

PLOT DATE = #DATE#

CHECKED DBM

REVISED -

DATE 03-18-11

REVISED -

STATE OF ILLINOIS
DEPARTMENT OF TRANSPORTATION

ALIGNMENT, TIES AND BENCHMARKS

SCALE: NONE SHEET NO. 2 OF 3 SHEETS STA. TO STA.

F.A.P. RTE.	SECTION	COUNTY	TOTAL SHEETS	SHEET NO.
998	82-1-2HB	ST. CLAIR	72	12
CONTRACT NO. 76C50				
FED. ROAD DIST. NO. ILLINOIS FED. AID PROJECT				