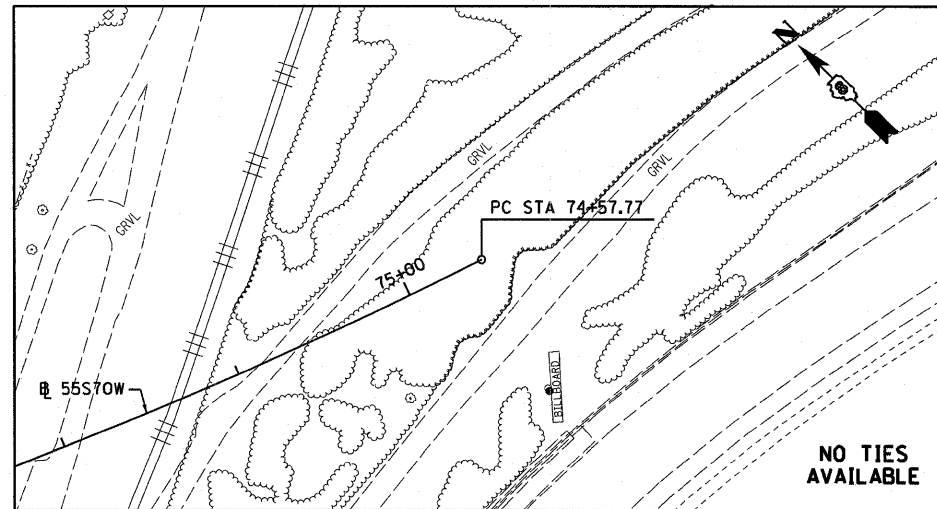
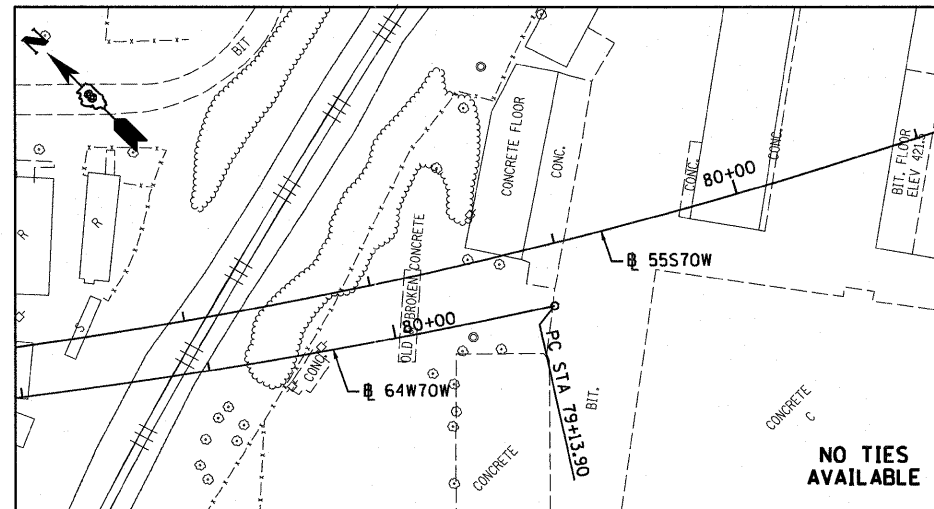


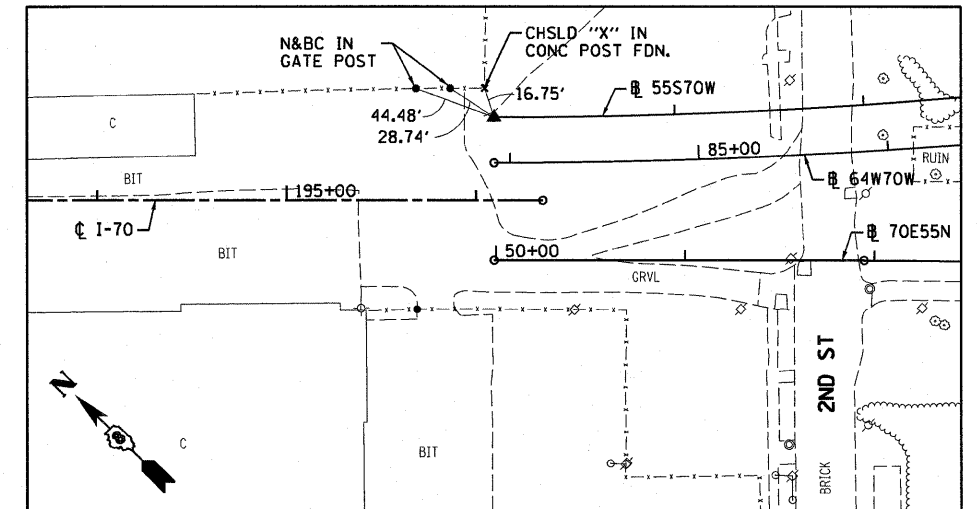
55S70W
PC STA 74+57.77
SET 5/8" I PIN W/RED CAP



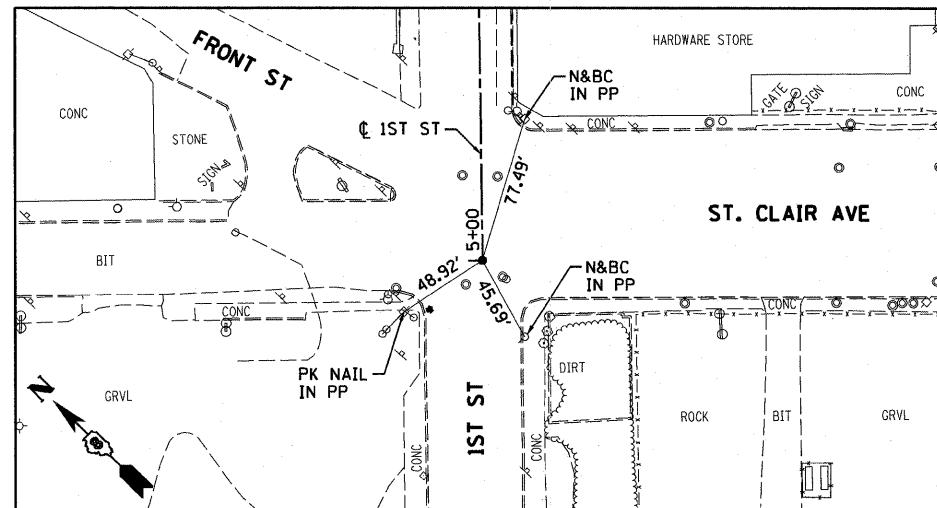
55S70W
PI STA 81+39.12



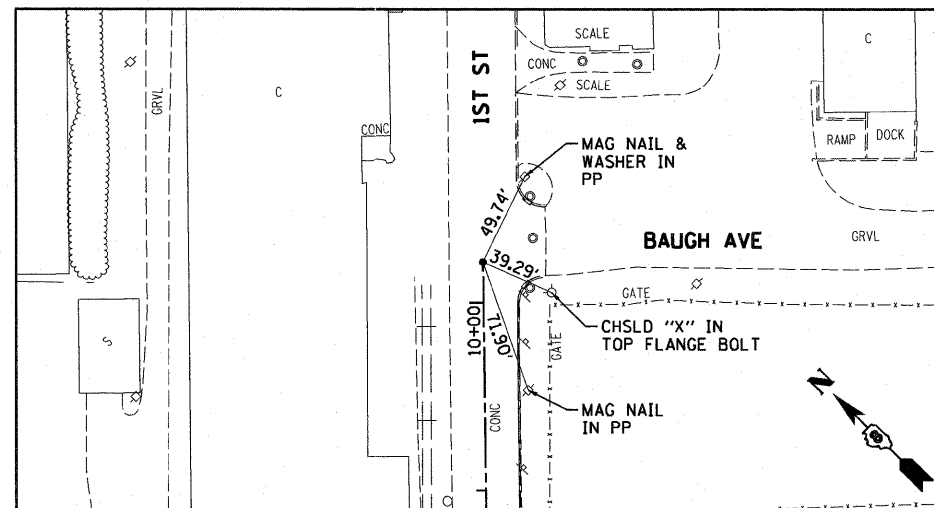
55S70W
PT STA 87+95.40
SET 5/8" REBAR W/RED LIN ENG. CAP FLUSH W/GR



1ST STREET
POT STA 5+00
MAG NAIL INSIDE CHSLD "X"



1ST STREET
POT STA 10+21.57
5/8" I.P. IN CONC PAVT



BENCHMARKS

BENCHMARK	DESCRIPTION	ELEVATION	STATION	OFFSET
0017-01	RR SPIKE IN PP W/LIGHT NW QUAD. ST. CLAIR & 1ST STREET	422.11	ST. CLAIR 86+61	30.0' LT
BM26	CHISELLED 'X' SOUTHERLY CAP BOLT FIRE HYDRANT AT NORTH QUADRANT 2ND ST. & ST. CLAIR AVE	423.65	I-70 EB/I-55 NB 51+42	210' RT
BM27	CHISELLED 'X' SOUTHERLY CAP BOLT FIRE HYDRANT AT NORTH QUADRANT 2ND STREET AND BAUGH AVE.	419.77	I-55 SB/I-70 WB 86+27	190' RT

FILE NAME = DBTRI-76C50-shr-ATB-03.dgn

USER NAME = searsb
PLOT SCALE = 100.0000' / in.
PLOT DATE = #DATE#

DESIGNED OP
DRAWN PHP/OP
CHECKED DBM
DATE 03-18-11

REVISED -
REVISED -
REVISED -
REVISED -

STATE OF ILLINOIS
DEPARTMENT OF TRANSPORTATION

ALIGNMENT, TIES AND BENCHMARKS

SCALE: NONE SHEET NO. 3 OF 3 SHEETS STA. TO STA.

F.A.P. RTE.	SECTION	COUNTY	TOTAL SHEETS	SHEET NO.
998	82-1-2HB	ST. CLAIR	72	13
FED. ROAD DIST. NO.		ILLINOIS FED. AID PROJECT		

CONTRACT NO. 76C50