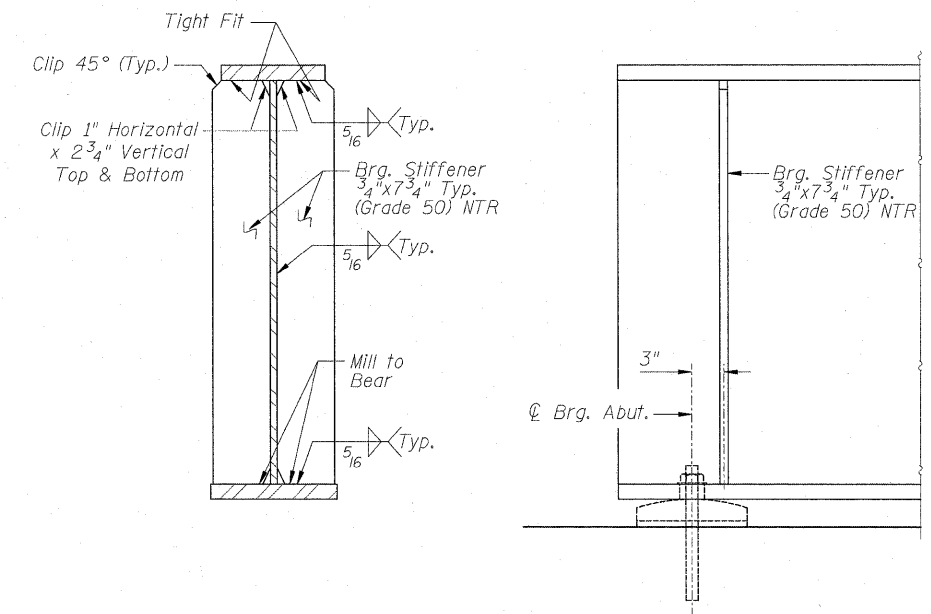


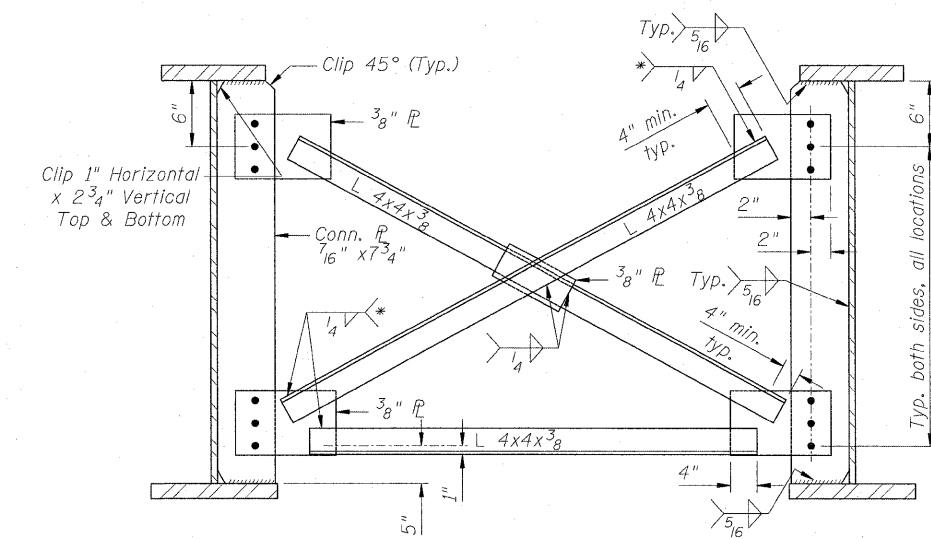
FRAMING PLAN

Notes:

- All dimensions are horizontal.
- Ends of girders, bearing stiffeners and connection plates shall be vertical.
- For Girder Details, see Sheet 18 of 30.
- For Interior Girder Moment & Reaction Tables, see Sheet 17 of 30.
- For Bearing Details, see Sheet 17 of 30.
- For Splice Details, see Sheet 17 of 30.
- All cross frames and diaphragms shall be installed as steel is erected and secured with erection pins and bolts except as otherwise noted. Individual cross frames or diaphragms at supports may be temporarily disconnected to install bearing anchor rods.
- Load carrying components designated "NTR" shall conform to the Supplemental Requirements for Notch Toughness, Zone 2.



SECTION ELEVATION
BEARING STIFFENER DETAILS



INTERIOR CROSS FRAME

- *Fillet weld angles along 3 sides on one face of gusset plate.
- Bolts shall be 3/4" dia. with 15/16" dia. holes.
- Two hardened washers required for each set of oversized holes.
- Interior Cross Frame angles, plates and conn. plates shall be Grade 36.

FRAMING PLAN
INTERSTATE 70 OVER 1ST STREET
FAI-70
SECTION 82-1-2HB
ST. CLAIR COUNTY
STA. 192+97.45
STRUCTURE NO. 082-0312 (EB)
STRUCTURE NO. 082-0313 (WB)



FILE NAME = ... \D6TR1-0820312-0820313-76C50-016-FramingPlan.dgn	USER NAME = SAW	DESIGNED - LAS	REVISED -	STATE OF ILLINOIS DEPARTMENT OF TRANSPORTATION	FRAMING PLAN	F.A.P. RTE. 998	SECTION 82-1-2HB	COUNTY ST. CLAIR	TOTAL SHEETS 72	SHEET NO. 46
PLOT SCALE = 1.0000' / IN.	CHECKED - LAS	REVISIED -	REVISIED -			SN 082-0312 & 082-0313	CONTRACT NO. 76C50			
PLOT DATE = 2/25/2011	DATE - 3-18-11	REVISIED -	REVISIED -			FED. ROAD DIST. NO.	ILLINOIS FED. AID PROJECT			
SCALE: NONE		SHEET NO. 16 OF 30 SHEETS				STA.	TO STA.			