

**GIRDER ELEVATION**

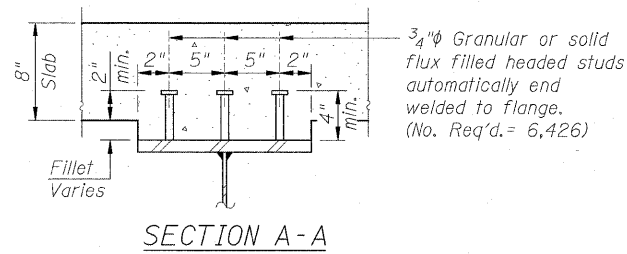
Load carrying components designated "NTR" shall conform to the Supplemental Requirements for Notch Toughness, Zone 2.

For Stud Shear Connector spacing at splice, see Splice Detail on Sheet 17 of 30.

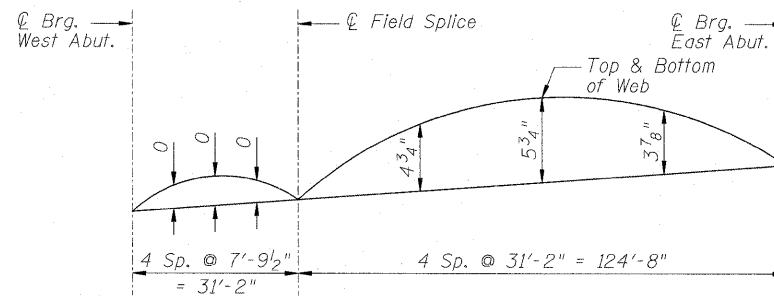
**TOP OF WEB ELEVATIONS**

(For Fabrication Only)

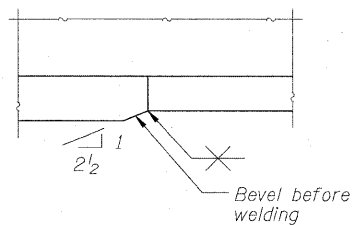
Girder	℄ Brg. W. Abut.	℄ Field Splice	℄ Brg. E. Abut.
1	441.616	442.198	444.889
2	441.779	442.361	445.052
3	441.904	442.486	445.176
4	442.026	442.608	445.299
5	442.146	442.728	445.419
6	442.024	442.606	445.296
7	441.791	442.373	445.064
8	441.811	442.393	445.084
9	442.034	442.616	445.306
10	442.137	442.718	445.409
11	442.011	442.593	445.284
12	441.887	442.468	445.159
13	441.753	442.334	445.025
14	441.586	442.168	444.859



**SECTION A-A**



**CAMBER DIAGRAM**



**DETAIL B**

**STRUCTURAL STEEL DETAILS 2**  
**INTERSTATE 70 OVER 1ST STREET**  
**FAI-70**  
**SECTION 82-1-2HB**  
**ST. CLAIR COUNTY**  
**STA. 192+97.45**  
**STRUCTURE NO. 082-0312 (EB)**  
**STRUCTURE NO. 082-0313 (WB)**

**ZROKA** Engineering, P.C.  
 4216 North Hermitage  
 Chicago, IL 60613

FILE NAME =	USER NAME = SAW	DESIGNED - LAS	REVISED -	<b>STATE OF ILLINOIS DEPARTMENT OF TRANSPORTATION</b>	<b>STRUCTURAL STEEL DETAILS 2</b>	F.A.P. RTE.	SECTION	COUNTY	TOTAL SHEETS	SHEET NO.
...DBTRI-0820312-0820313-76C50-018-Steel	details2.dgn	DRAWN - SAW	REVISED -			998	82-1-2HB	ST. CLAIR	72	48
	PLOT SCALE = 1/8000' / IN.	CHECKED - LAS	REVISED -			SN 082-0312 & 082-0313		CONTRACT NO. 76C50		
	PLOT DATE = 2/25/2011	DATE - 3-18-11	REVISED -			FED. ROAD DIST. NO.	ILLINOIS FED. AID PROJECT			