

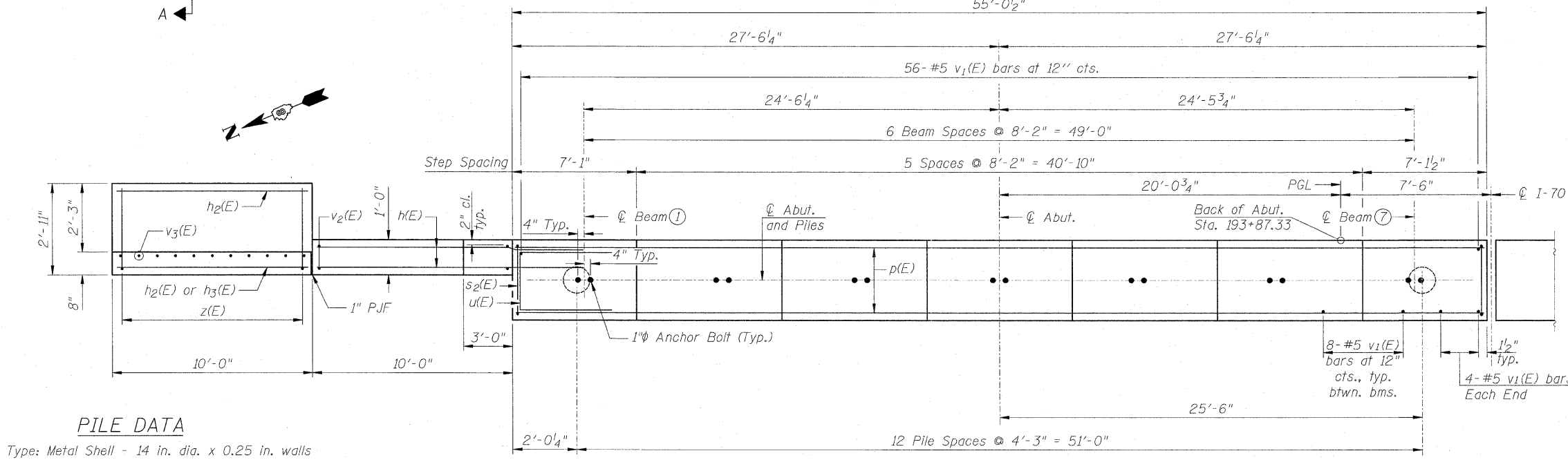
SEC. THRU ABUT.

BILL OF MATERIAL

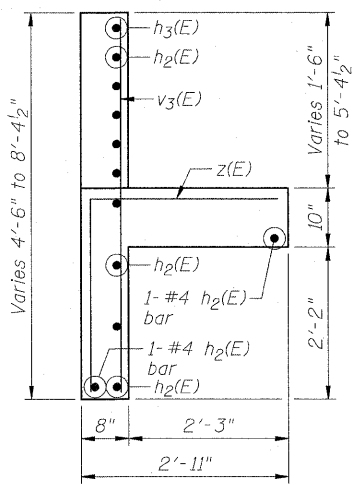
Bar	No.	Size	Length	Shape
h(E)	26	#7	13'-9"	
h1(E)	4	#4	16'-0"	
h2(E)	11	#4	9'-8"	
h3(E)	1	#4	10'-4"	
p(E)	20	#7	30'-3"	
p2(E)	24	#5	29'-2"	
s2(E)	52	#5	11'-5"	
s3(E)	17	#4	5'-8"	
u(E)	8	#6	6'-10"	
v1(E)	112	#5	4'-4"	
v2(E)	11	#5	17'-7"	
v3(E)	11	#4	8'-0"	
z(E)	11	#4	5'-4"	
Concrete Structures		Cu. Yd.	25.2	
Reinforcement Bars, Epoxy Coated		Pound	4,390	
Furnishing Metal Shell Piles 14" x 0.250"		Foot	984	
Driving Piles		Foot	984	
Test Pile Metal Shells		Each	1	

For details of Bar Splicers, see Sheet 23 of 30.
 For details of piles, see Sheet 24 of 30.
 Bars indicated thus: 6x2-#7 etc. indicates 6 lines of bars with 2 lengths per line.

WESTBOUND EAST ABUTMENT
 INTERSTATE 70 OVER 1ST STREET
 FAI-70
 SECTION 82-1-2HB
 ST. CLAIR COUNTY
 STA. 192+97.45
 STRUCTURE NO. 082-0312 (EB)
 STRUCTURE NO. 082-0313 (WB)



PLAN



SECTION A-A

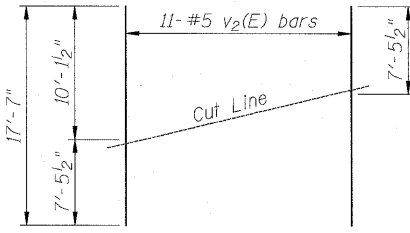
Maximum Applied Service Bearing Pressure = 1310 psf

PILE DATA

Type: Metal Shell - 14 in. dia. x 0.25 in. walls
 Nominal Required Bearing: 400 k
 Factored Resistance Available: 200 k
 Est. Length: 82 ft.
 No. Production Piles: 12
 No. Test Piles: 1
 Piles shall be driven through 18" diameter precored holes extending to elevation 403.0 according to Article 512.09(c) of the Standard Specifications.
 Cost included in driving piles.

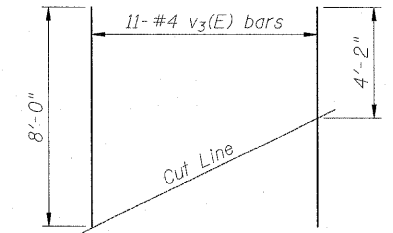
MIN. BAR LAP

#5 Bar = 3'-8"
 #7 Bar = 5'-10"



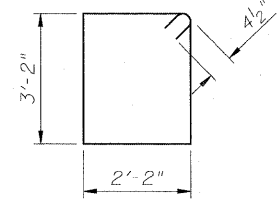
FIELD CUTTING DIAGRAM 1

Order v2(E) full length. Cut as shown and use remainder of bars in opposite face.

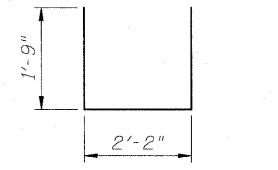


FIELD CUTTING DIAGRAM 2

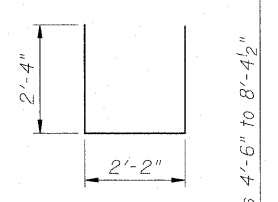
Order v3(E) full length. Cut as shown and discard remainder.



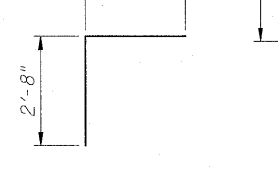
BAR s2(E)



BAR u(E)



BAR s3(E)



BAR z(E)



STATE OF ILLINOIS
 DEPARTMENT OF TRANSPORTATION

WESTBOUND EAST ABUTMENT

SCALE: NONE SHEET NO. 20 OF 30 SHEETS STA. TO STA.

F.A.P. RTE.	SECTION	COUNTY	TOTAL SHEETS	SHEET NO.
99B	82-1-2HB	ST. CLAIR	72	50
SN 082-0312 & 082-0313		CONTRACT NO. 76C50		
FED. ROAD DIST. NO.		ILLINOIS FED. AID PROJECT		