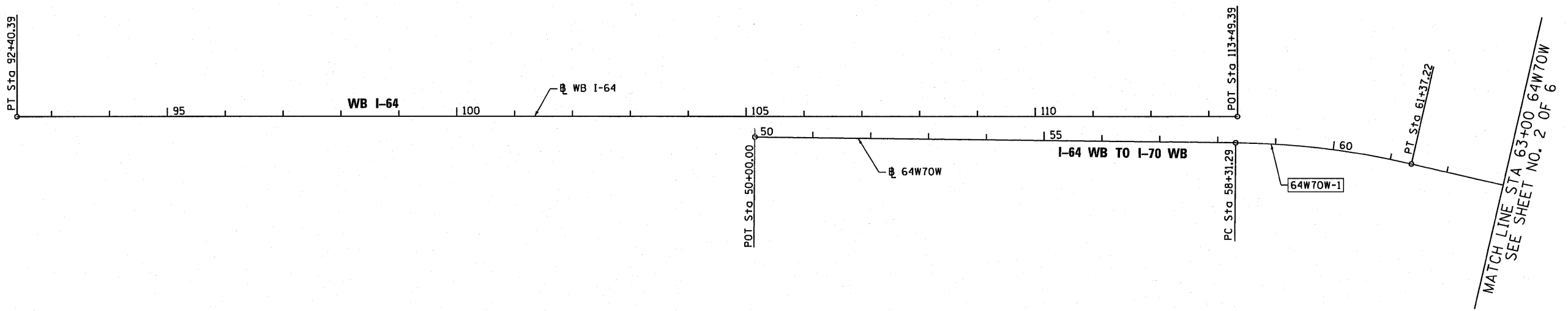
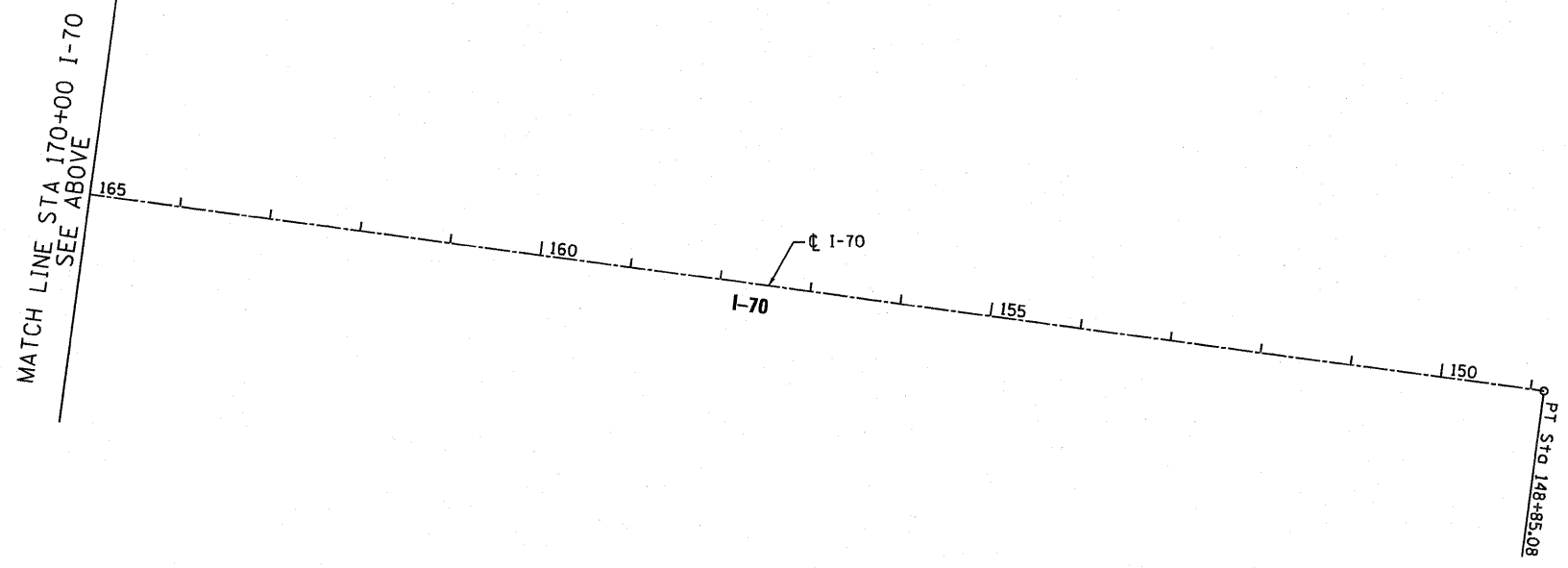
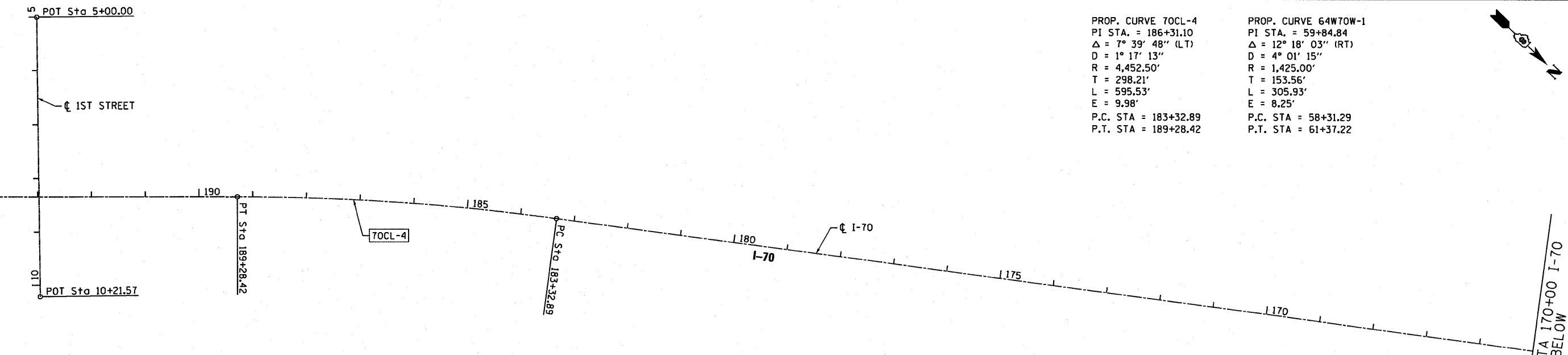


PROP. CURVE 7OCL-4  
 PI STA. = 186+31.10  
 $\Delta = 7^\circ 39' 48''$  (LT)  
 $D = 1^\circ 17' 13''$   
 $R = 4,452.50'$   
 $T = 298.21'$   
 $L = 595.53'$   
 $E = 9.98'$   
 P.C. STA = 183+32.89  
 P.T. STA = 189+28.42

PROP. CURVE 64W70W-1  
 PI STA. = 59+84.84  
 $\Delta = 12^\circ 18' 03''$  (RT)  
 $D = 4^\circ 01' 15''$   
 $R = 1,425.00'$   
 $T = 153.56'$   
 $L = 305.93'$   
 $E = 8.25'$   
 P.C. STA = 58+31.29  
 P.T. STA = 61+37.22

MATCH LINE STA 195+00 I-70  
 SEE SHEET NO. 2 OF 6



**COORDINATE TABLES**

WB I-64				
POINT	CURVE	STATION	NORTHING	EASTING
POT		92+40.39	14039562.55	2457948.49
POT		113+49.39	14041072.69	2456476.31

64W70W				
POINT	CURVE	STATION	NORTHING	EASTING
POT		50+00.00	14040500.55	2457084.34
PC	64W70W-1	58+31.29	14041102.41	2456510.93
PI	64W70W-1	59+84.84	14041213.58	2456405.01
PT	64W70W-1	61+37.22	14041344.77	2456325.21

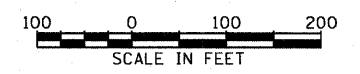
  

I-70				
POINT	CURVE	STATION	NORTHING	EASTING
PT	7OCL-3	148+85.08	14046698.27	2451611.67
PC	7OCL-4	183+32.89	14043929.00	2453665.57
PI	7OCL-4	186+31.10	14043689.47	2453843.21
PT	7OCL-4	189+28.42	14043475.78	2454051.21

1ST STREET				
POINT	CURVE	STATION	NORTHING	EASTING
POT		5+00.00	14042975.09	2454071.58
POT		10+21.57	14043343.28	2454441.00

\* THREE-POINT TIE SET FOR THIS POINT



USER NAME = Henaoc	DESIGNED - CRH	REVISED -
PLOT SCALE = 200.0000' / in.	DRAWN - PHP	REVISED -
PLOT DATE = *DATE*	CHECKED - DBM	REVISED -
	DATE - 3-18-11	REVISED -

**STATE OF ILLINOIS  
DEPARTMENT OF TRANSPORTATION**

**ALIGNMENT, TIES AND BENCHMARKS**

SCALE: 1"=100' SHEET NO. 3 OF 6 SHEETS STA. TO STA.

F.A.I. R.T.E.	SECTION	COUNTY	TOTAL SHEETS	SHEET NO.
70	82-1-B-1	ST. CLAIR	319	23
FED. ROAD DIST. NO. ILLINOIS FED. AID PROJECT			CONTRACT NO. 76C75	