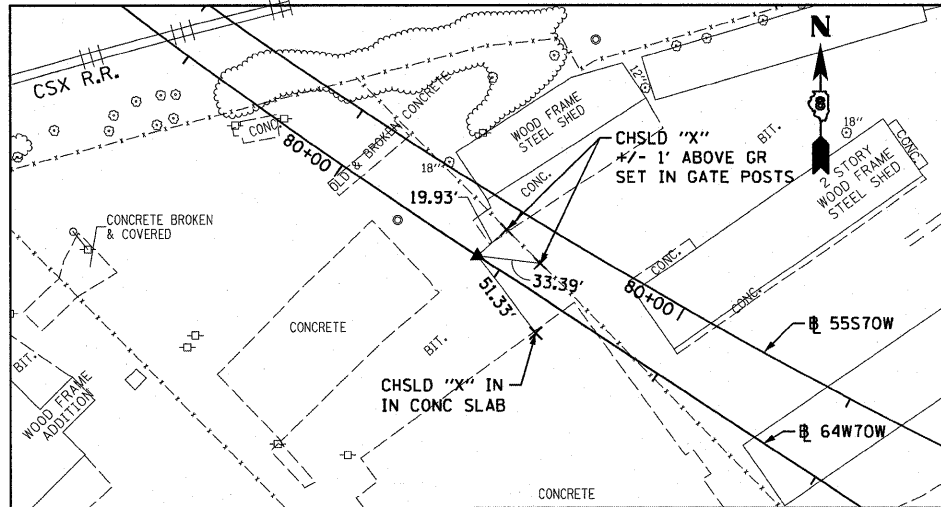
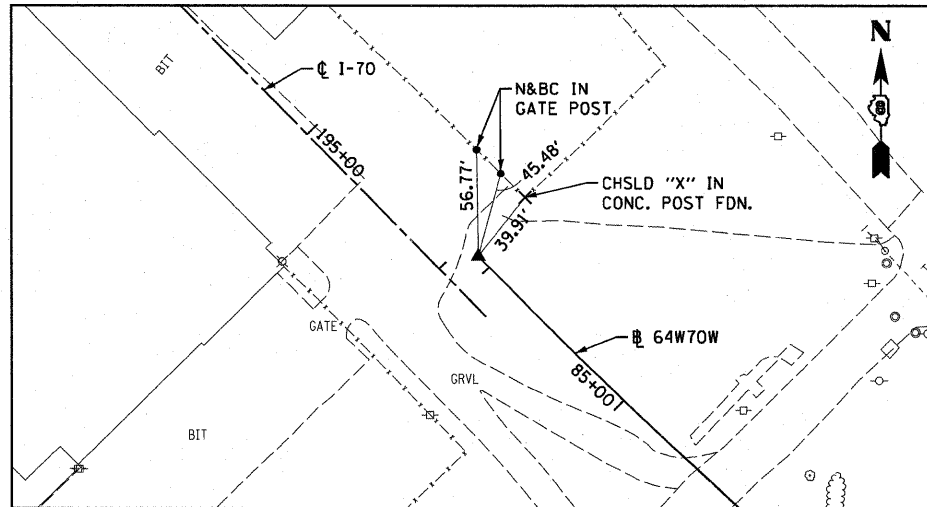


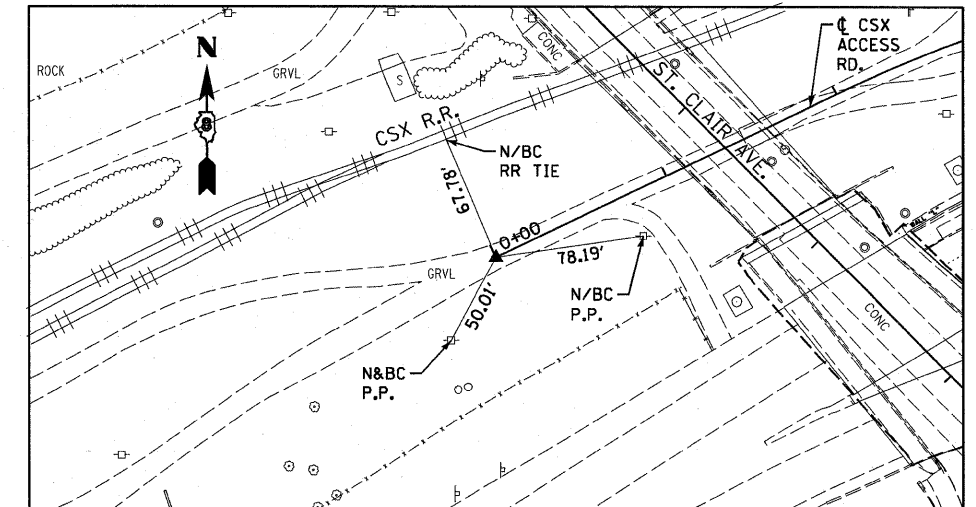
64W70W
PC STA 79+13.90
SET 5/8" REBAR W/RED CAP FLUSH W/GR



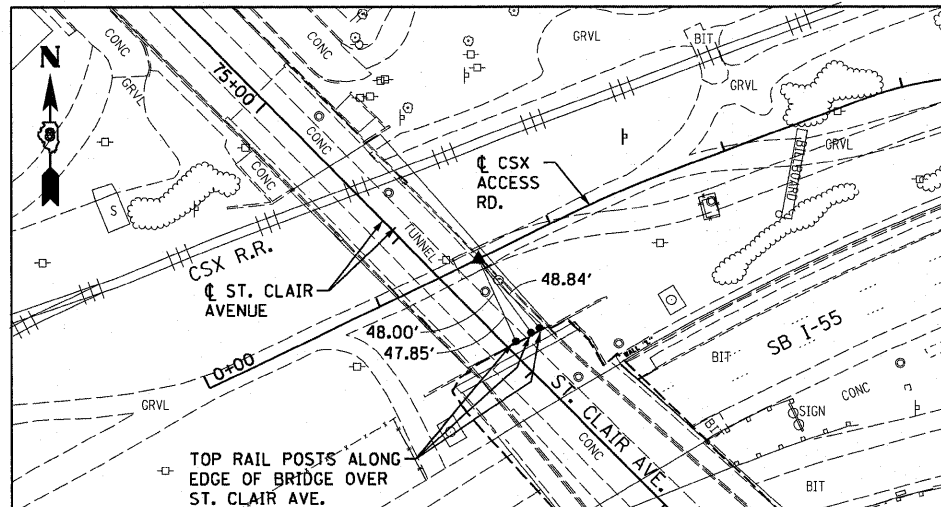
64W70W
PT STA 86+08.31
SET 5/8" REBAR W/RED CAP FLUSH W/GR



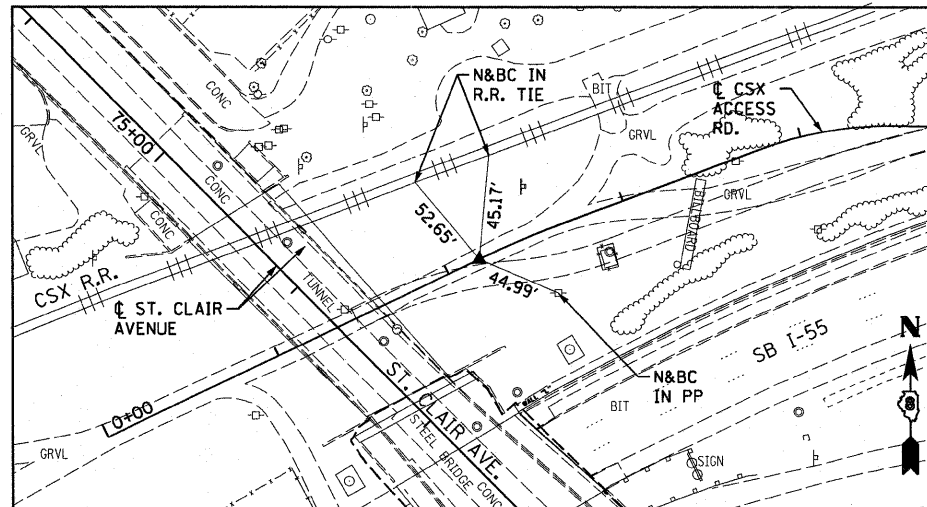
CSX ACCESS
POT STA 0+00.00
5/8" I. PIN/RED CAP



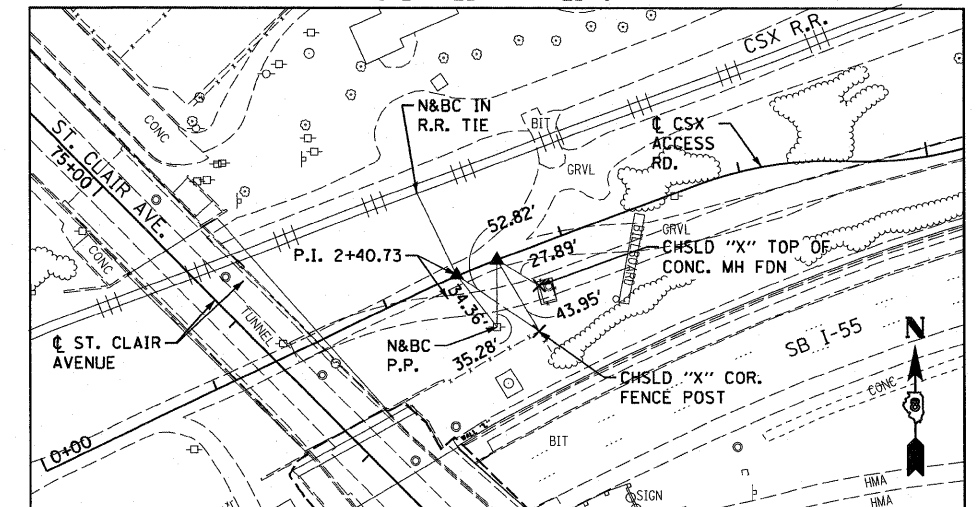
CSX ACCESS
PI STA 1+57.85
R.R. SPIKE/DIMPLE



CSX ACCESS
PC STA 2+17.98
1/2" REBAR W/RED CAP



CSX ACCESS
PT STA 2+63.46
1/2" REBAR W/RED CAP



NOTE: TIES ONLY SHOWN FOR ALIGNMENTS DIRECTLY RELATED TO CONSTRUCTION PERFORMED IN CONTRACT 76C75

USER NAME = Henaoc	DESIGNED - CRH	REVISED -
PLOT SCALE = 100.0000' / 1"	DRAWN - PHP	REVISED -
PLOT DATE = #DATE#	CHECKED - DBM	REVISED -
	DATE - 3-18-11	REVISED -

STATE OF ILLINOIS
DEPARTMENT OF TRANSPORTATION

ALIGNMENT, TIES AND BENCHMARKS

SCALE: NONE SHEET NO. 6 OF 6 SHEETS STA. TO STA.

F.A.I. RTE.	SECTION	COUNTY	TOTAL SHEETS	SHEET NO.
70	82-1-B-1	ST. CLAIR	319	26
FED. ROAD DIST. NO. ILLINOIS FED. AID PROJECT			CONTRACT NO. 76C75	