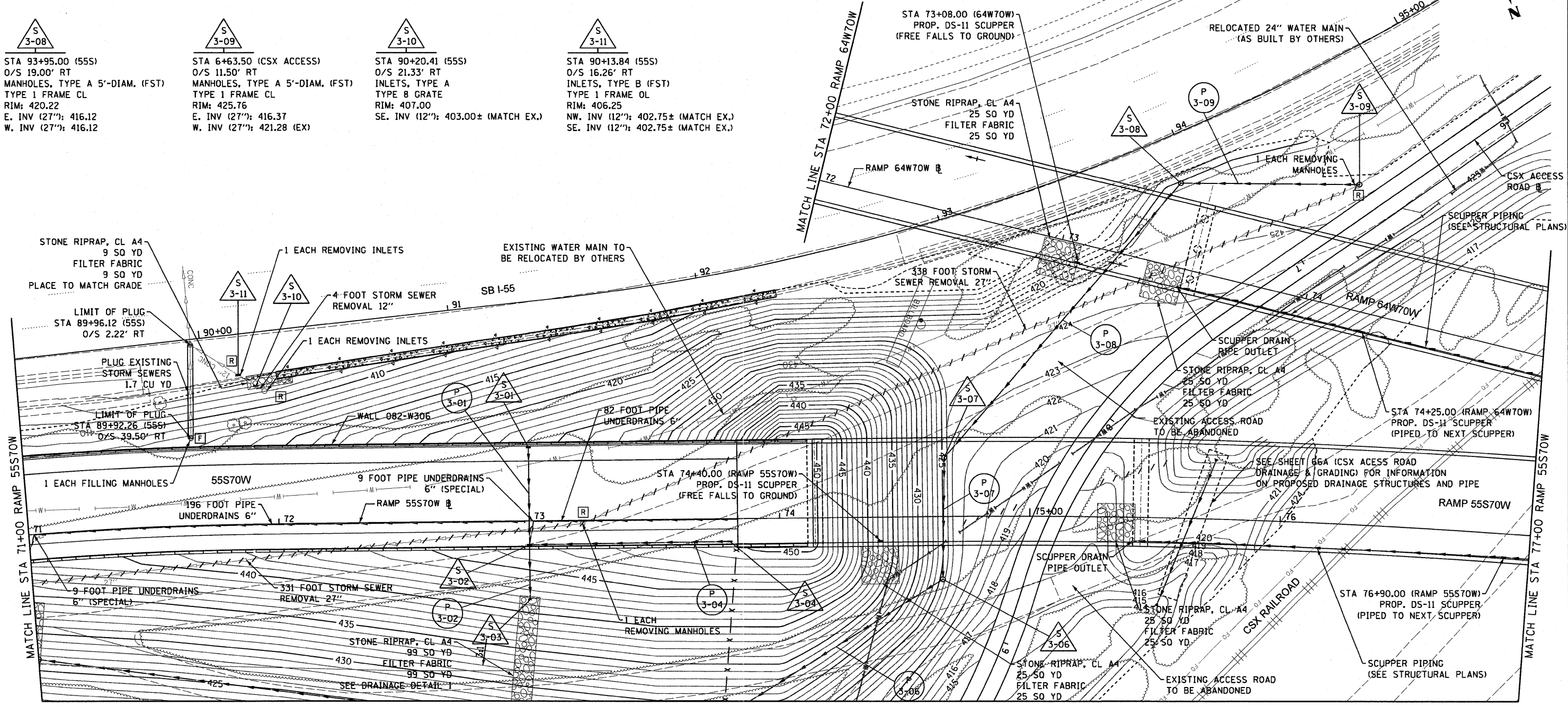


- S 3-01**
STA 73+00.00 (55S70W)
O/S 30.00' LT
INLETS, TYPE A
TYPE 20 F&G
RIM: 447.81
N. INV (12''): 444.01
- S 3-02**
STA 73+00.00 (55S70W)
O/S 10.00' RT
INLETS, TYPE B
TYPE 20 F&G
RIM: 446.77
N. INV (12''): 440.11
S. INV (12''): 442.30
W. INV (12''): 440.79
- S 3-03**
STA 73+00.00 (55S70W)
O/S 28.54' RT
PRECAST REINFORCED CONCRETE
FLARED END SECTIONS 12"
INV (12''): 439.60
- S 3-04**
STA 73+80.00 (55S70W)
O/S 10.00' RT
INLETS, TYPE A
TYPE 20 F&G
RIM: 449.97
E. INV (12''): 443.99
- S 3-06**
STA 74+65.00 (55S70W)
O/S 25.00' RT
MANHOLES, TYPE A 5'-DIAM.
TYPE 1 FRAME CL
RIM: 424.50
S. INV (27''): 415.45
E. INV (27''): 415.45
- S 3-07**
STA 74+66.00 (55S70W)
O/S 23.50' LT
MANHOLES, TYPE A 5'-DIAM. (FST)
TYPE 1 FRAME CL
RIM: 424.50
N. INV (27''): 415.62
W. INV (27''): 415.62

- S 3-08**
STA 93+95.00 (55S)
O/S 19.00' RT
MANHOLES, TYPE A 5'-DIAM. (FST)
TYPE 1 FRAME CL
RIM: 420.22
E. INV (27''): 416.12
W. INV (27''): 416.12
- S 3-09**
STA 6+63.50 (CSX ACCESS)
O/S 11.50' RT
MANHOLES, TYPE A 5'-DIAM. (FST)
TYPE 1 FRAME CL
RIM: 425.76
E. INV (27''): 416.37
W. INV (27''): 421.28 (EX)
- S 3-10**
STA 90+20.41 (55S)
O/S 21.33' RT
INLETS, TYPE A
TYPE 8 GRATE
RIM: 425.76
SE. INV (12''): 403.00± (MATCH EX.)
- S 3-11**
STA 90+13.84 (55S)
O/S 16.26' RT
INLETS, TYPE B (FST)
TYPE 1 FRAME OL
RIM: 406.25
NW. INV (12''): 402.75± (MATCH EX.)
SE. INV (12''): 402.75± (MATCH EX.)



MATCH LINE SHEET 9

- P 3-01**
38 FOOT STORM SEWERS
CLASS A, TYPE 2 12" @ 4.50%
TBF = 6.9 CU YD
- P 3-02**
19 FOOT STORM SEWERS
CLASS A, TYPE 2 12" @ 2.68%
TBF = 1.9 CU YD
- P 3-04**
80 FOOT STORM SEWERS
CLASS A, TYPE 2 12" @ 4.00%
TBF = 46.9 CU YD
- P 3-06**
123 FOOT STORM SEWER
(WATER MAIN REQUIREMENTS) 27 INCH @ 0.35%
TBF = 0.0 CU YD
- P 3-07**
48 FOOT STORM SEWERS
CLASS A, TYPE 2 27" @ 0.35%
TBF = 0.0 CU YD
- P 3-08**
145 FOOT STORM SEWERS
CLASS A, TYPE 1 27" @ 0.34%
TBF = 0.0 CU YD
- P 3-09**
71 FOOT STORM SEWERS
CLASS A, TYPE 2 27" @ 0.35%
TBF = 0.0 CU YD

USER NAME = Henaoc		DESIGNED - KLK	REVISED -	STATE OF ILLINOIS DEPARTMENT OF TRANSPORTATION	DRAINAGE & UTILITY PLAN RAMP 55S70W			F.A.I. RTE. 70	SECTION 82-1-B-1	COUNTY ST. CLAIR	TOTAL SHEETS 319	SHEET NO. 60
PLOT SCALE = 40,0000' / in.		DRAWN - KLK	REVISED -		SCALE: 1" = 20'	SHEET NO. 3 OF 10 SHEETS	STA. 71+00 TO STA. 77+00	CONTRACT NO. 76C75				
PLOT DATE = #DATE#		CHECKED - EEE	REVISED -		FED. ROAD DIST. NO. ILLINOIS FED. AID PROJECT							
		DATE - 3-18-11	REVISED -									