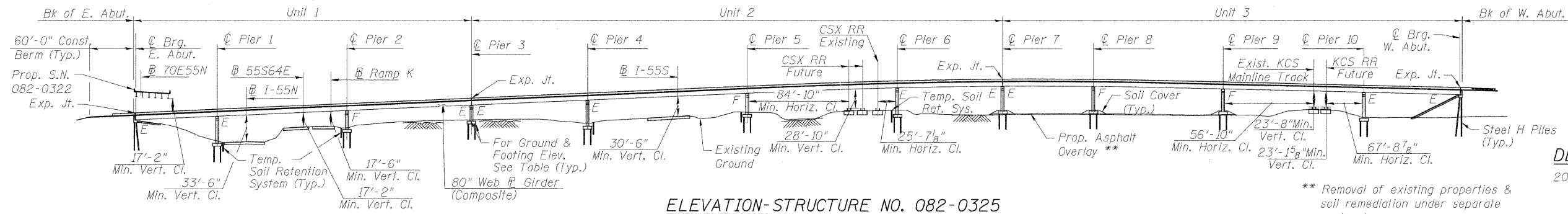
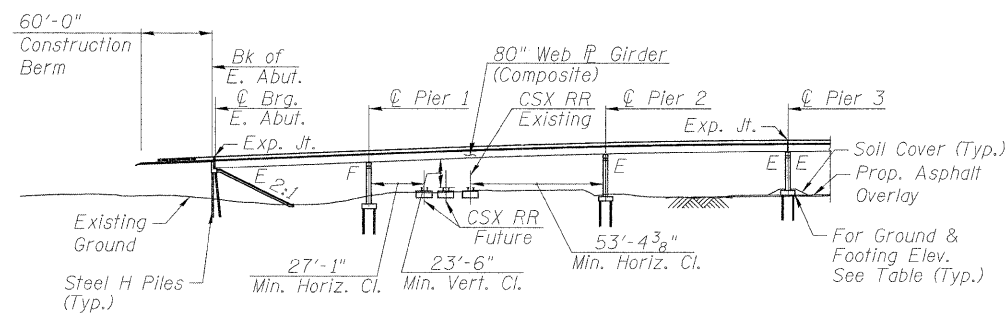


Benchmark BM25: Chiselled square in Concrete Foundation of Manhole Structure between I-55/70 W.B. & CSX RR, 65' RT, Sta. 60+32. Elev. 429.43
 Benchmark JD4: Chiselled square northerly foundation sign truss over I-55/70 W.B. ramp to I-64 E.B. 35.5' RT, Sta. 18+35 (55S64E) Elev. 403.40
 Benchmark BM27: Chiselled 'X' southerly cap bolt fire hydrant at north quadrant 2nd Street and Baugh Ave. 190' RT, Sta. 86+27 (55S70W) Elev. 419.77
 Existing Structure: None

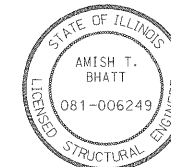


LEGEND

- Existing Storm Sewer
- Existing Underground Electric
- Existing Underground Cable TV
- Existing Underground Combined Sewer
- Existing Underground Telephone
- Proposed Storm Sewer
- Soil Boring Location
- Proposed Light Pole



APPROVED
 FOR STRUCTURAL ADEQUACY ONLY
Amish T. Bhatt
 ENGINEER OF BRIDGES AND STRUCTURES



Amish T. Bhatt
 DATE: 4-26-2011
 EXPIRES: 11-30-2012

DESIGN SPECIFICATIONS

2010 AASHTO LRFD Bridge Design Specifications, Fifth Edition

DESIGN STRESSES

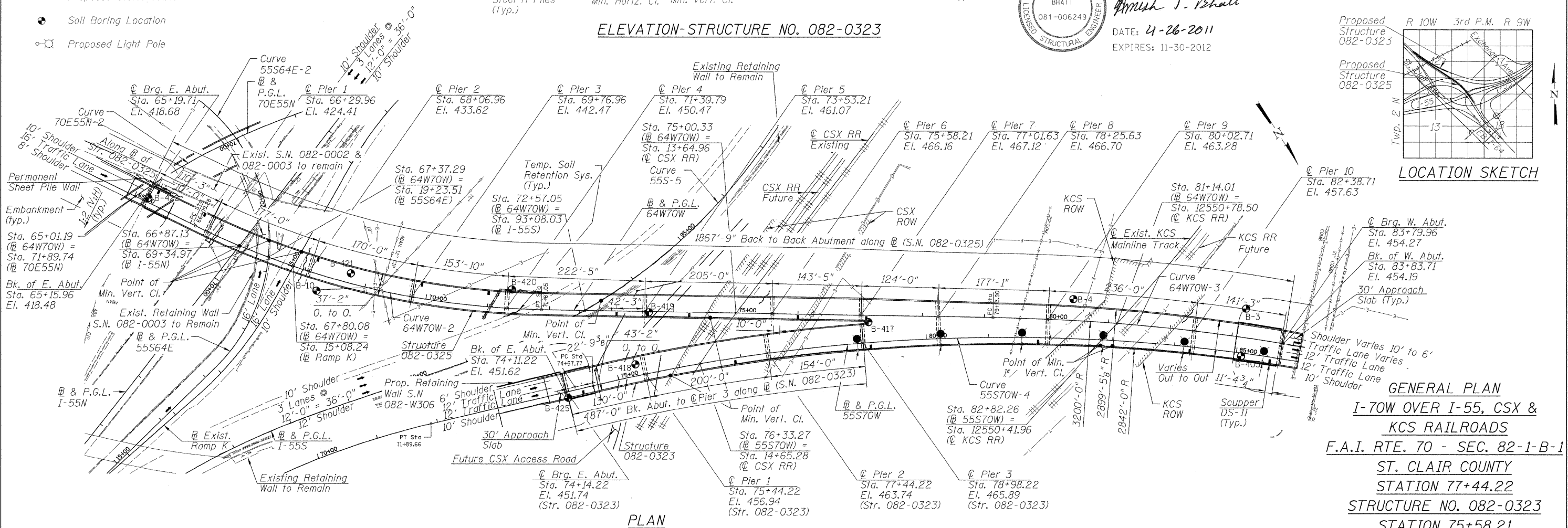
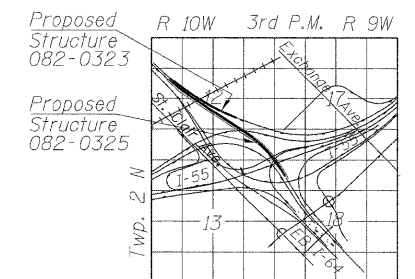
$f'_c = 3,500$ psi
 $f_y = 60,000$ psi (reinf.)
 $f_y = 50,000$ psi (M270 Grade 50)

LOADING HL-93

Allow 50#/sq. ft. for future wearing surface

SEISMIC DATA

Seismic Performance Zone (SPZ) = 2
 Design Spectral Acceleration at 1.0 sec. (S_{D1}) = 0.24g
 Design Spectral Acceleration at 0.2 sec. (S_{D5}) = 0.54g
 Soil Site Class = D



USER NAME = BhattA	DESIGNED - ATB	REVISED -
PLOT SCALE = @1" = 10'	DRAWN - DD	REVISED -
PLOT DATE = @DATE*	CHECKED - ATB	REVISED -
	DATE - 04-26-2011	REVISED -

STATE OF ILLINOIS
 DEPARTMENT OF TRANSPORTATION

GENERAL PLAN
 I-70W OVER I-55, CSX & KCS RAILROADS

SCALE: NONE SHEET NO. S-1 OF S-138 SHEETS STA. TO STA.

F.A.I. RTE.	SECTION	COUNTY	TOTAL SHEETS	SHEET NO.
70	82-1-B-1	ST. CLAIR	319	116
S.N. 082-0323 & S.N. 082-0325			CONTRACT NO. 76C75	
FED. ROAD DIST. NO.			ILLINOIS FED. AID PROJECT	