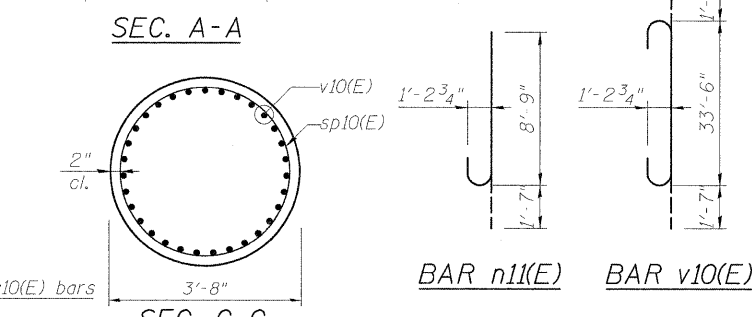
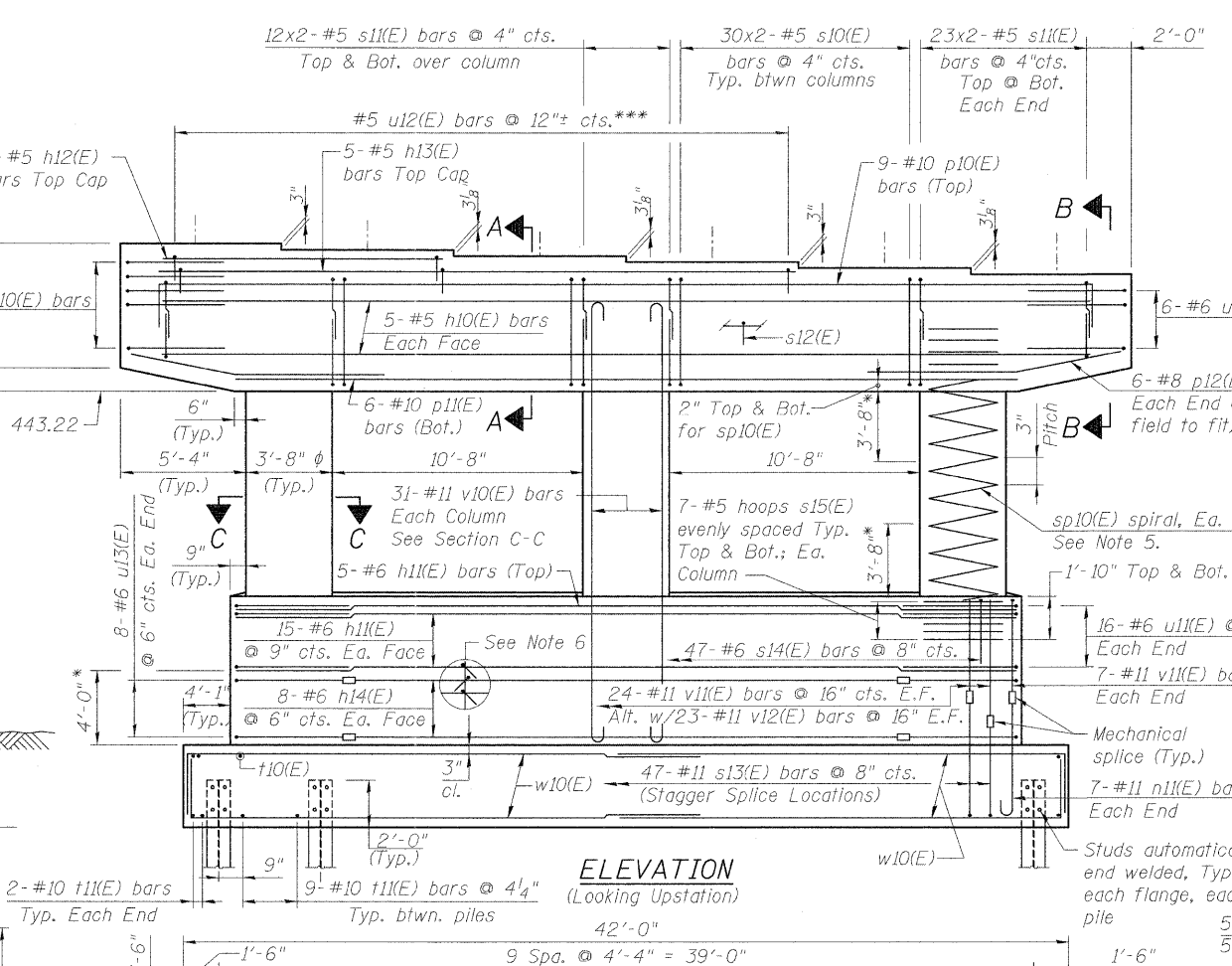
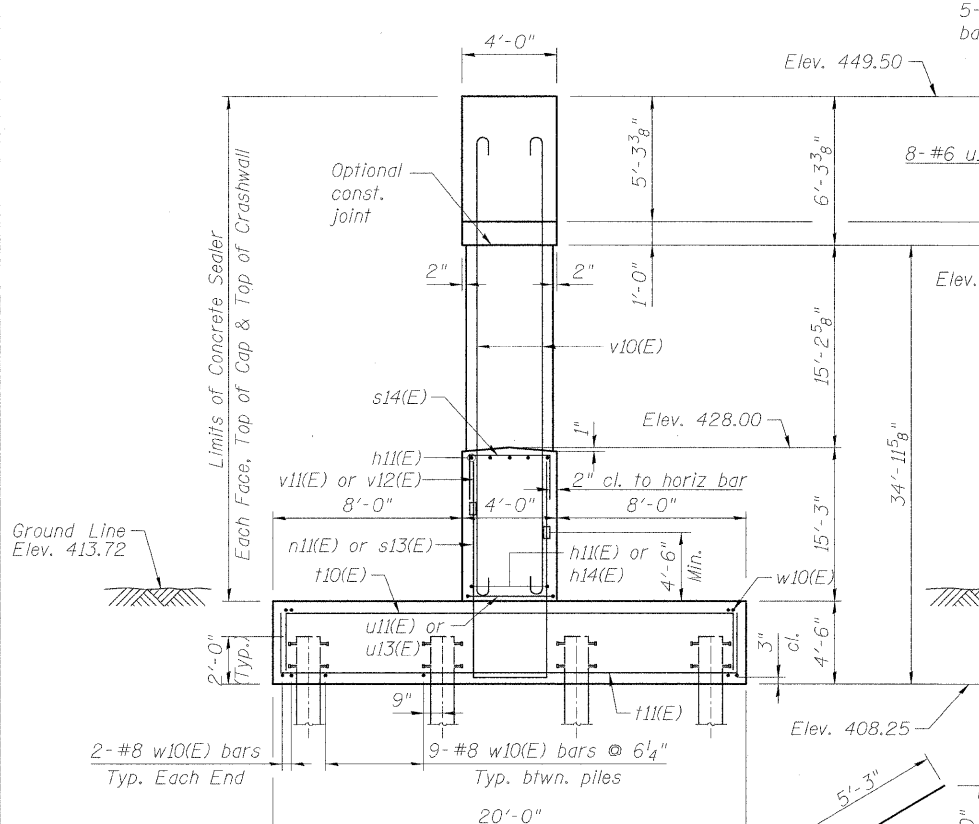
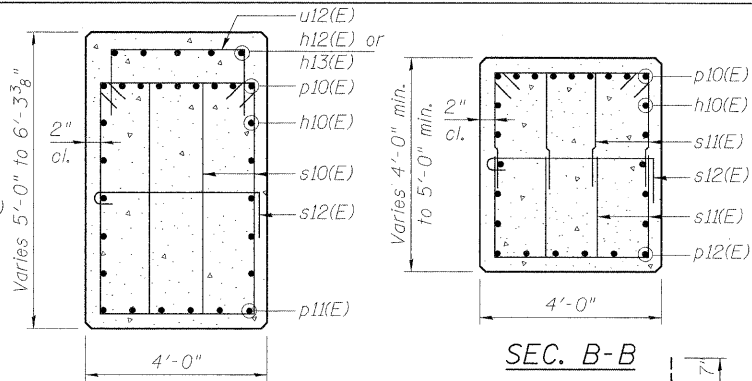
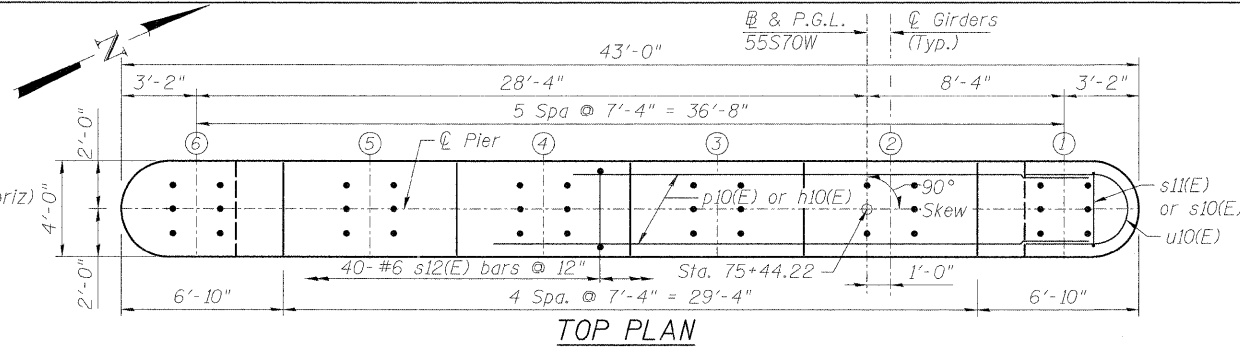


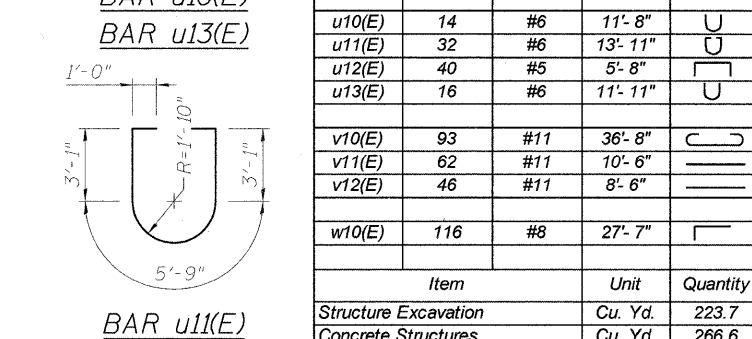
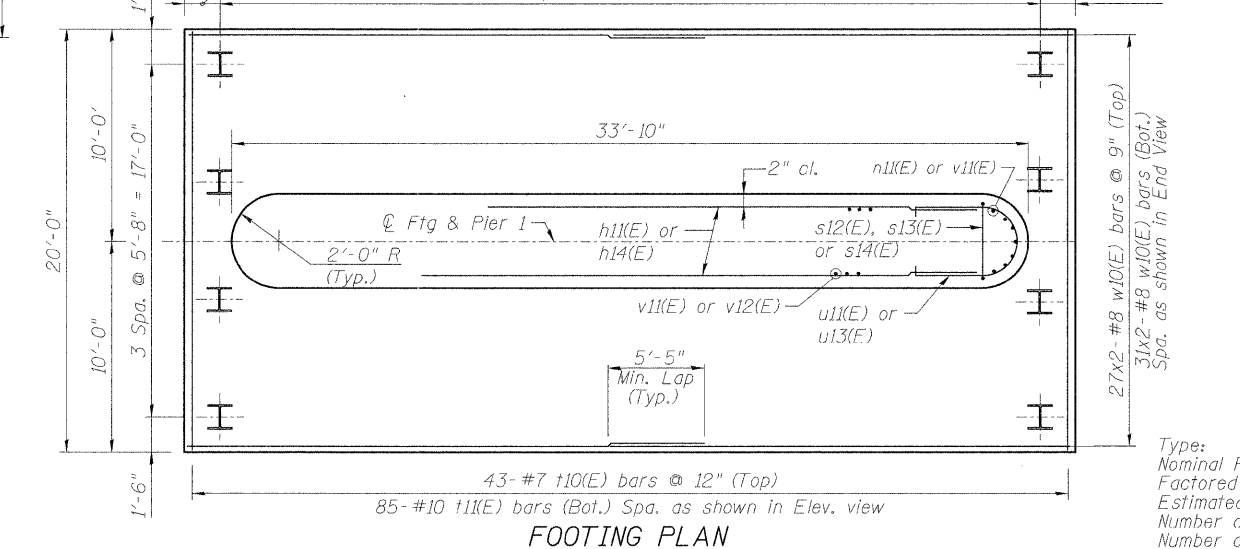
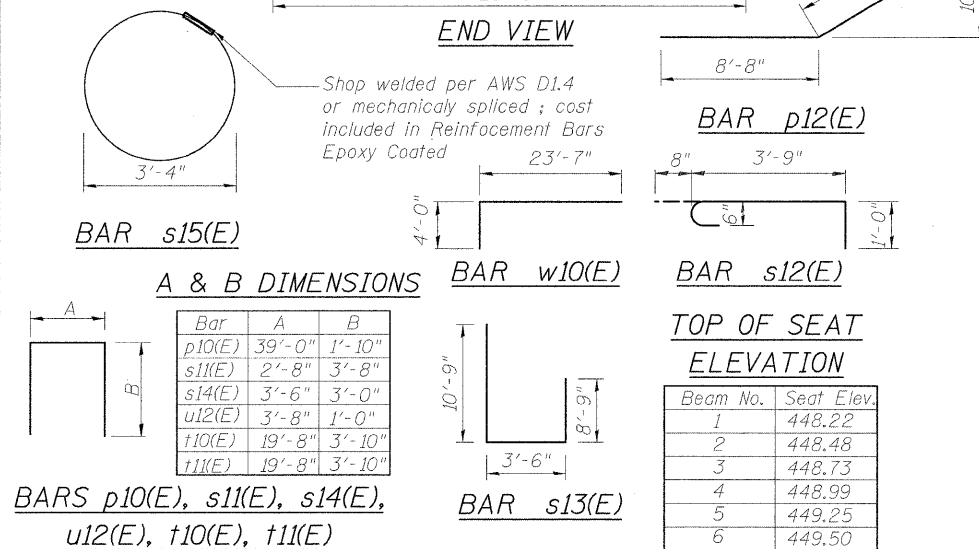
NOTES:

- Space reinforcement in cap to miss anchor bolts.
 - Pour steps monolithically with cap.
 - For details of piles, see sheet S-122.
 - Bars indicated thus 20 x 3-#5 etc. indicates 20 lines of bars with 3 lengths per line.
 - #5 sp10(E) spiral, each column
 - The s12(E) cross-tie bars shall be placed so that orientation of 180° hook of two successive cross ties alternate end to end. A single layer of bars shall be provided across top mat of footing reinforcement. Space bars as follows:
9- #6 s12(E) @ 6" (vert) x 47 @ 8" (horiz)
16- #6 s12(E) @ 9" (vert) x 24 @ 1'-4" (horiz)
 - For anchor bolt details, see Sheets S-83 thru S-92.
- 1) Provide 1/2 extra turns, shop welded together per AWS D1.4 top and bottom. Extend spiral 2" into pier cap & crashwall. Provide 4-#4 spacers or equivalent.
- 2) When splicing spiral reinforcement is necessary, the spiral shall be provided with 1/2 extra turns at the ends to be spliced. These additional turns shall either be welded together according to AWS D1.4, or shall both terminate with a 135° standard hook.
- ** Length is height of spiral.
- *** 13-u12(E) bars match w/ h12(E) bars
27-u12(E) bars match w/ h13(E) bars
Adjust bars in field to avoid conflict with stirrups.
- * Splicing of reinforcement will not be allowed in this region.



BILL OF MATERIAL

Bar	No.	Size	Length	Shape
h10(E)	10	#5	38'-8"	—
h11(E)	35	#6	29'-4"	—
h12(E)	5	#5	12'-0"	—
h13(E)	5	#5	26'-8"	—
h14(E)	16	#6	23'-8"	—
n11(E)	14	#11	10'-4"	—
p10(E)	9	#10	42'-8"	—
p11(E)	6	#10	33'-0"	—
p12(E)	12	#6	13'-11"	—
s10(E)	120	#5	15'-7"	—
s11(E)	232	#5	10'-0"	—
s12(E)	847	#6	5'-5"	—
s13(E)	47	#11	23'-0"	—
s14(E)	47	#6	9'-6"	—
s15(E)	42	#5	10'-5 5/8"	—
sp10(E)	3	#5	15'-7"	—
t10(E)	43	#7	27'-4"	—
t11(E)	85	#10	27'-4"	—
u10(E)	14	#6	11'-8"	—
u11(E)	32	#6	13'-11"	—
u12(E)	40	#5	5'-8"	—
u13(E)	16	#6	11'-11"	—
v10(E)	93	#11	36'-8"	—
v11(E)	62	#11	10'-6"	—
v12(E)	46	#11	8'-6"	—
w10(E)	116	#8	27'-7"	—



PILE DATA

Type: HP14x89
Nominal Required Bearing: 500 kips
Factored Resistance Available: 250 kips
Estimated Length: 104 ft.
Number of Production Piles: 39
Number of Test Piles: 1

Beam No.	Seat Elev.
1	448.22
2	448.48
3	448.73
4	448.99
5	449.25
6	449.50

STATE OF ILLINOIS
DEPARTMENT OF TRANSPORTATION

PIER 1 - S.N. 082-0323
I-70W OVER I-55, CSX & KCS RAILROADS

F.A.I. RTE.	SECTION	COUNTY	TOTAL SHEETS	SHEET NO.
70	82-1-B-1	ST. CLAIR	319	217

S.N. 082-0323 & S.N. 082-0325 CONTRACT NO. 76C75
FED. ROAD DIST. NO. ILLINOIS FED. AID PROJECT



USER NAME = Bhatta	DESIGNED = EJO	REVISED =
PLOT SCALE = 1/4" = 1'-0"	DRAWN = JHR	REVISED =
PLOT DATE = *DATE*	CHECKED = DB	REVISED =
	DATE = 05-02-11	REVISED =

P:\P&ID\6695\980-CAD\9801\Drawings\76C080-Master-Consolidated\Structural\082-0323\Sheet\3102-082-0323-76C75-Pier1.dgn