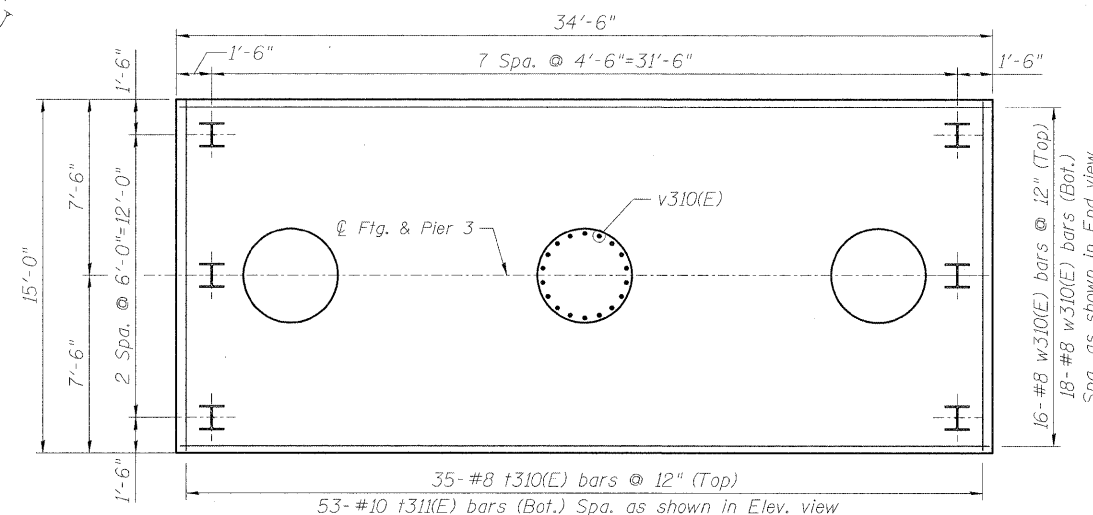


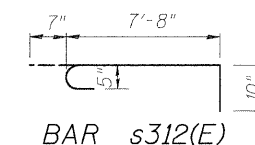
A & B DIMENSIONS

Bar	A	B
p310(E)	36'-10"	2'-0"
s311(E)	5'-7"	3'-8"
t310(E)	14'-8"	3'-4"
t311(E)	14'-8"	3'-4"
u310(E)	7'-6"	3'-1"
u311(E)	3'-8"	1'-0"
w310(E)	34'-2"	3'-6"

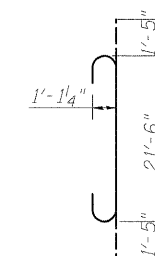
BARS p310(E), s311(E), t310(E), t311(E), u310(E), u311(E), & w310(E)



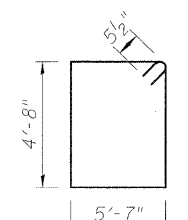
FOOTING PLAN



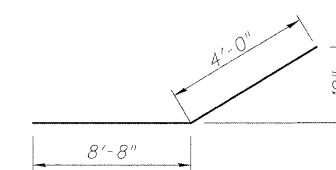
BAR s312(E)



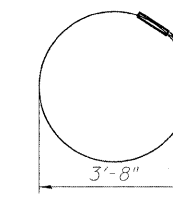
BAR v310(E)



BAR s310(E)



BAR p312(E)

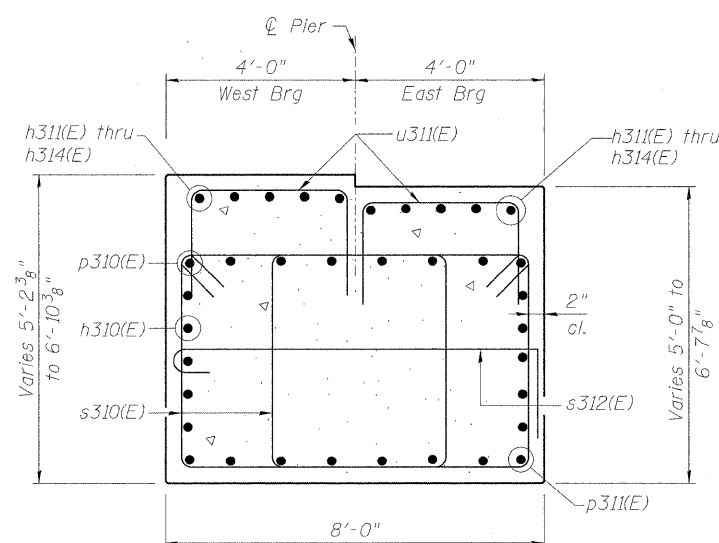


BAR s313(E)

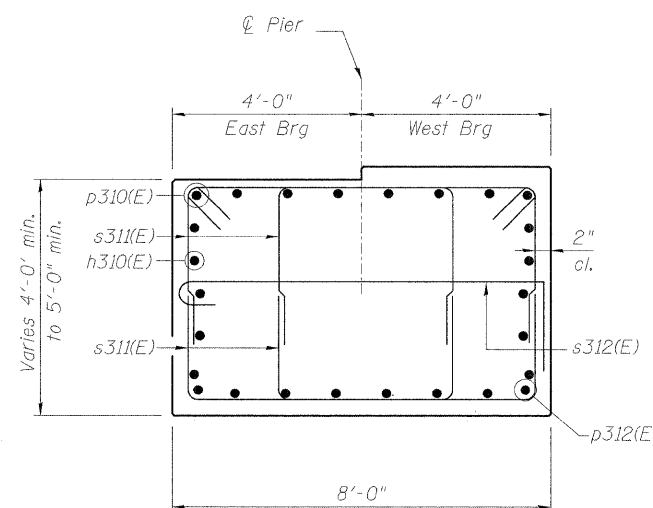
Shop welded per AWS D1.4 or mechanically spliced; cost included in Reinforcement Bars Epoxy Coated

BILL OF MATERIAL

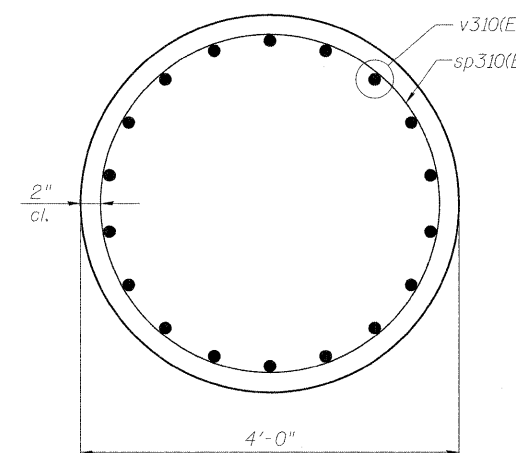
Bar	No.	Size	Length	Shape
h310(E)	10	#5	36'-10"	—
h311(E)	10	#5	5'-10"	—
h312(E)	20	#5	9'-6"	—
h313(E)	10	#5	18'-2"	—
h314(E)	10	#5	30'-6"	—
p310(E)	8	#10	40'-10"	┌
p311(E)	8	#10	29'-9"	—
p312(E)	16	#8	12'-8"	└
s310(E)	64	#5	21'-5"	┌
s311(E)	164	#5	12'-11"	┌
s312(E)	38	#5	9'-1"	┌
s313(E)	48	#5	11'-6"	○
** sp310(E)	3	#5	15'-1"	MW
t310(E)	35	#8	21'-4"	┌
t311(E)	53	#10	21'-4"	┌
u310(E)	15	#6	13'-8"	┌
u311(E)	152	#5	5'-8"	┌
v310(E)	54	#10	24'-4"	┌
w310(E)	34	#8	41'-2"	┌
<b>Item</b>		<b>Unit</b>	<b>Quantity</b>	
Structure Excavation		Cu. Yd.	108.4	
Concrete Structures		Cu. Yd.	161.6	
Reinforcement Bars, Epoxy Coated		Pound	28,330	
Furnishing Steel Piles, HP14x89		Foot	2484	
Driving Piles		Foot	2484	
Test Pile Steel HP14x89		Each	1	
Pile Shoes		Each	24	
Concrete Sealer		Sq Ft	1544	



SEC. A-A



SEC. B-B



SEC. C-C

PILE DATA

Type: HP14x89  
 Nominal Required Bearing: 500 kips  
 Factored Resistance Available: 250 kips  
 Estimated Length: 108 ft.  
 Number of Production Piles: 23  
 Number of Test Piles: 1

\*\* Length is height of spiral.



USER NAME = Bhatta	DESIGNED - ATB	REVISED -
PLOT SCALE = 1/8" = 1'-0"	DRAWN - PMM	REVISED -
PLOT DATE = *DATE*	CHECKED - ATB	REVISED -
	DATE - 05-02-11	REVISED -

STATE OF ILLINOIS  
 DEPARTMENT OF TRANSPORTATION

PIER 3 DETAILS - S.N. 082-0325  
 I-70W OVER I-55, CSX & KCS RAILROADS

SCALE: NONE SHEET NO. S-109 OF S-138 SHEETS STA. TO STA.

F.A.I. RTE.	SECTION	COUNTY	TOTAL SHEETS	SHEET NO.
70	82-1-B-1	ST. CLAIR	319	224
S.N. 082-0323 & S.N. 082-0325			CONTRACT NO. 76C75	
FED. ROAD DIST. NO.		ILLINOIS FED. AID PROJECT		

P:\P0804660\900\_CAD\901\_Drawings\76C002\_Master\_Consolidated\Structural\082-0323\_Shee\A3109\_082-0325\_76C75\_Pier3B.dgn