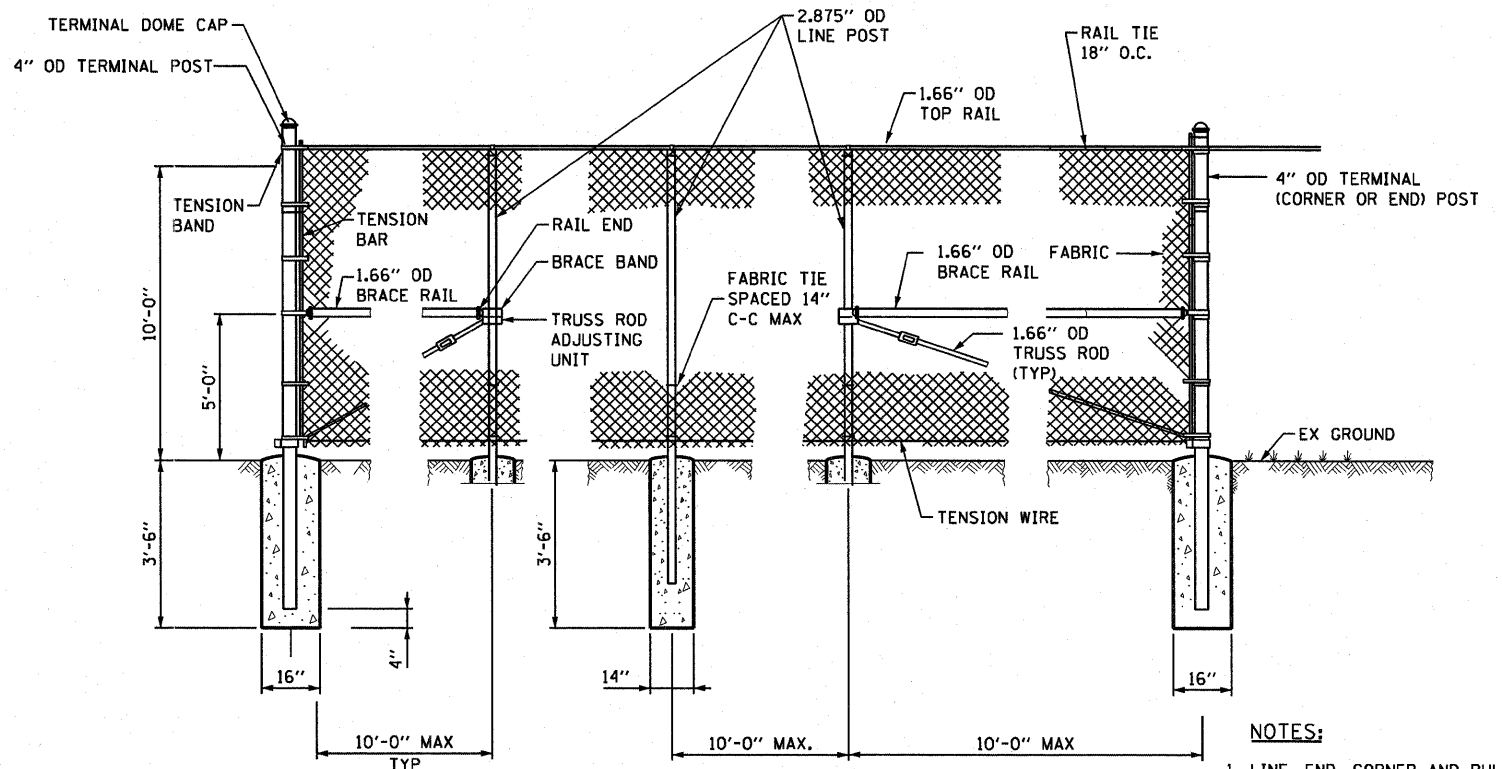


**CONCRETE BARRIER, SINGLE FACE,  
42 INCH HEIGHT (SPECIAL)**  
STA 60+50.00 TO STA 65+00.00, RT (RAMP 55S70W)

**NOTES:**

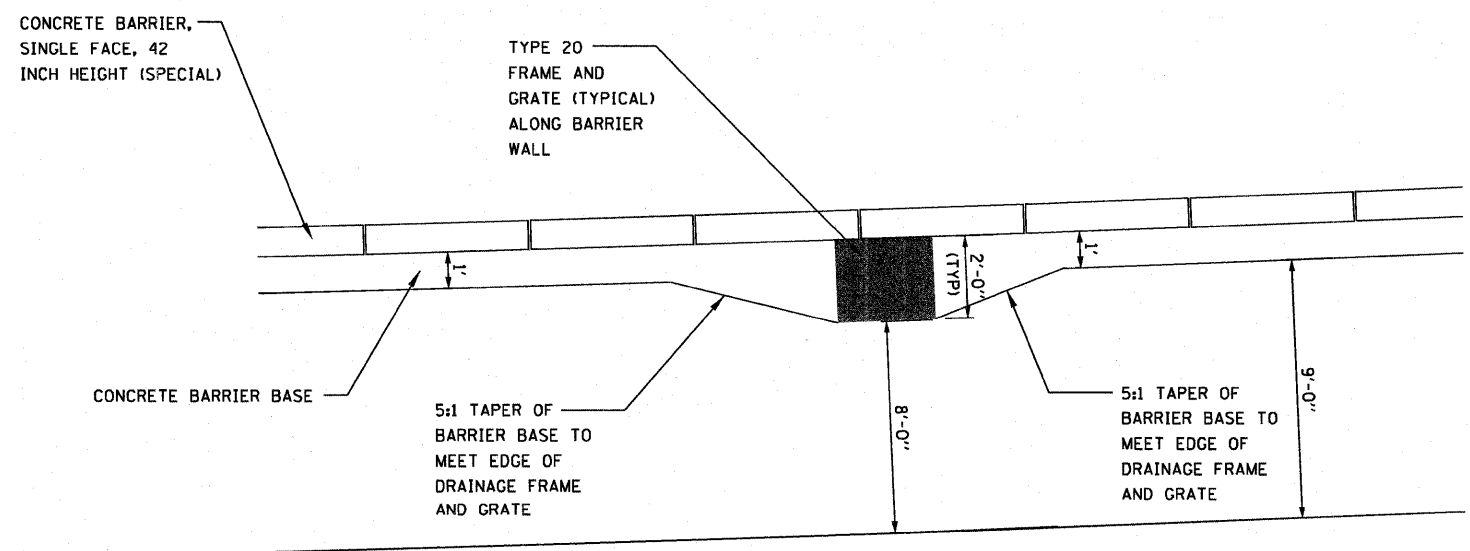
1. DIMENSIONS AND REINFORCEMENT DETAILS APPLY TO ALL CONCRETE BARRIER, SINGLE FACE, 42 INCH HEIGHT (SPECIAL) (SPECIAL) SHOWN IN THE PLANS
2. THERE SHALL BE A MINIMUM 6" OVERLAP BETWEEN CONCRETE THICKNESS IN BARRIER WALL BASE AND CONCRETE THICKNESS IN ADJACENT SHOULDER TO PROVIDE ADEQUATE CONCRETE ABOVE AND BELOW THE TIE BAR.
3. TOP SHOULDER EDGE OF BARRIER BASE GUTTER SHALL MATCH THE TOP OF SHOULDER ELEVATION.
4. CONTRACTION AND EXPANSION JOINTS SHALL BE IN ACCORDANCE WITH ARTICLE 637.08 OF THE STANDARD SPECIFICATIONS.
5. REINFORCING BARS SHALL MEET THE REQUIREMENTS OF AASHTO M31 (ASTM A615), GRADE 60, AND SHALL CONFORM TO SECTION 508 OF THE STANDARD SPECIFICATIONS.
6. REINFORCING BARS DESIGNATED "E" SHALL BE EPOXY COATED.
7. REINFORCEMENT BENDING DETAILS SHALL BE IN ACCORDANCE WITH THE "MANUAL OF STANDARD PRACTICE FOR DETAILING REINFORCED CONCRETE STRUCTURES", ACI 315, LATEST EDITION.
8. REINFORCEMENT BAR BENDING DIMENSIONS ARE OUT TO OUT.
9. 3/4" PREFORMED JOINT FILLER SHALL BE USED WHERE CONCRETE BARRIER, SINGLE FACE, 42 INCH HEIGHT MEETS CONCRETE BARRIER, SINGLE FACE, 42 INCH HEIGHT (SPECIAL). PAYMENT SHALL BE INCLUDED IN COST OF CONCRETE BARRIER, SINGLE FACE, 42 INCH HEIGHT



**CHAIN LINK FENCE, 10' (SPECIAL)**  
SCALE: NONE

**NOTES:**

1. LINE, END, CORNER AND PULL POST, AND TOP, BRACE AND INTERMEDIATE RAILS TO BE HOT DIPPED GALVANIZED AND IN ACCORDANCE WITH ASTM F1043, SCHEDULE 40.
2. FABRIC: 2" MESH, ZINC COATED STEEL.



**DETAIL OF BARRIER BASE CONSTRUCTED  
AROUND DRAINAGE STRUCTURE**  
SCALE: NONE

USER NAME = sear-sb	DESIGNED - CRH	REVISED -
	DRAWN - CRH	REVISED -
PLOT SCALE = 20.000' / in.	CHECKED - DBM	REVISED -
PLOT DATE = #DATE#	DATE - 3-18-11	REVISED -

**STATE OF ILLINOIS  
DEPARTMENT OF TRANSPORTATION**

**ROADWAY DETAILS**

SCALE: NONE SHEET NO. 2 OF 4 SHEETS STA. TO STA.

F.A.I. RTE. 70	SECTION 82-1-B-1	COUNTY ST. CLAIR	TOTAL SHEETS 319	SHEET NO. 286
CONTRACT NO. 76C75				
FED. ROAD DIST. NO. [ILLINOIS] FED. AID PROJECT				