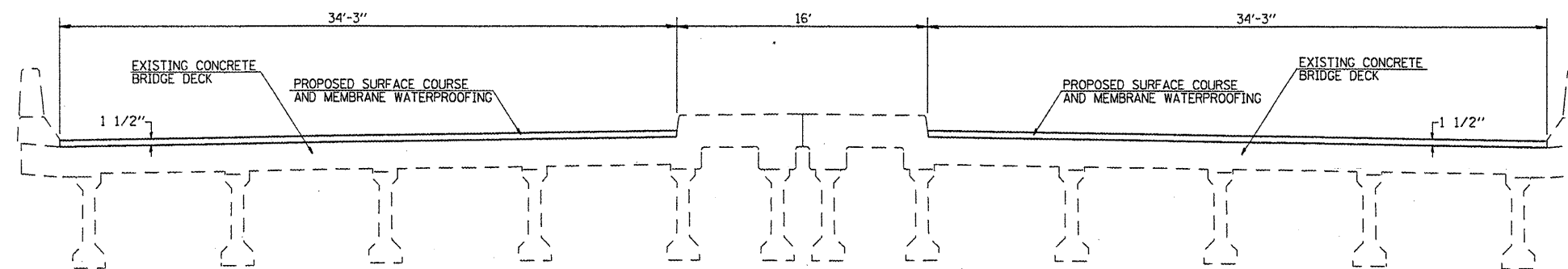


CROSS SECTION
 (S.N. 082-0257)
 STA. 45+74.84 TO STA. 47+05.17

▨ - HMA SURFACE REMOVAL (DECK)



CROSS SECTION
 (S.N. 082-0257)
 STA. 45+74.84 TO STA. 47+05.17

The contractor must exercise extreme care as not to damage the joints at the end of the deck surface during the overlay milling operations. Any damage to the joints must be repaired at the contractor's expense to the satisfaction of the Engineer.

FILE NAME = #FILE#	USER NAME = #USER#	DESIGNED - ---	REVISED - ---	STATE OF ILLINOIS DEPARTMENT OF TRANSPORTATION	TYPICAL SECTIONS (BRIDGE DECK)		F.A.P. RTE. 9185	SECTION 10-IRS-1	COUNTY ST. CLAIR	TOTAL SHEETS 25	SHEET NO. 8
	PLOT SCALE = #SCALE#	CHECKED - ---	REVISED - ---				CONTRACT NO. 76E15				
	PLOT DATE = #DATE#	DATE - ---	REVISED - ---				ILLINOIS FED. AID PROJECT				
					SCALE: _____	SHEET NO. ___ OF ___ SHEETS	STA. _____ TO STA. _____				