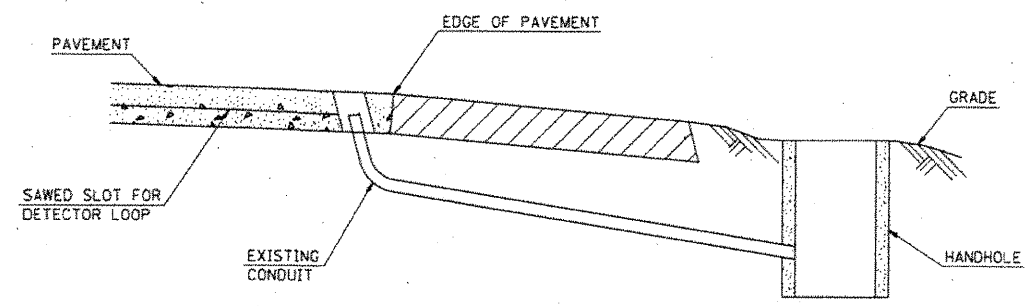


TRAFFIC SIGNAL SCHEDULE OF QUANTITIES				
CODE NO	ITEM	UNIT	TOTAL QUANTITIES	CONSTRUCTION TYPE CODE 0021
80300100	LOCATING UNDERGROUND CABLE	FOOT	100	100
81012300	CONDUIT IN TRENCH, 1" DIA., PVC	FOOT	40	40
81021320	CONDUIT PUSHED, 1 1/2" DIA., PVC	FOOT	45	45
83600300	LIGHT POLE FOUNDATION, 30" DIAMETER	FOOT	7	7
84200804	REMOVAL OF POLE FOUNDATION	EACH	1	1
87300815	ELECTRIC CABLE IN TRENCH, SERVICE, NO. 6 3 C	FOOT	500	500
87301225	ELECTRIC CABLE IN CONDUIT, SIGNAL NO. 14 3C	FOOT	550	550
87301245	ELECTRIC CABLE IN CONDUIT, SIGNAL NO. 14 5C	FOOT	210	210
87301255	ELECTRIC CABLE IN CONDUIT, SIGNAL NO. 14 7C	FOOT	145	145
87502680	TRAFFIC SIGNAL POST, ALUMINUM 14 FT.	EACH	3	3
87800100	CONCRETE FOUNDATION, TYPE A	FOOT	3.5	3.5
87900200	DRILL EXISTING HANDHOLE	EACH	1	1
88040070	SIGNAL HEAD, POLYCARBONATE, LED, 1-FACE, 3-SECTION, BRACKET MOUNTED	EACH	2	2
88040150	SIGNAL HEAD, POLYCARBONATE, LED, 1-FACE, 5-SECTION, BRACKET MOUNTED	EACH	2	2
88102710	PEDESTRIAN SIGNAL HEAD, LED, 1-FACE, BRACKET MOUNTED	EACH	4	4
88600600	DETECTOR LOOP REPLACEMENT	FOOT	1170	1170
88800100	PEDESTRIAN PUSH-BUTTON	EACH	3	3
89502200	MODIFY EXISTING CONTROLLER	EACH	1	1
89502210	MODIFY EXISTING CONTROLLER CABINET	EACH	1	1
89502350	REMOVE AND REINSTALL ELECTRIC CABLE FROM CONDUIT	FOOT	2680	2680
89502375	REMOVE EXISTING TRAFFIC SIGNAL EQUIPMENT	EACH	1	1
89502378	REBUILD EXISTING HANDHOLE TO HEAVY-DUTY HANDHOLE	EACH	1	1
X8440116	RELOCATE EXISTING LIGHTING UNIT, SPECIAL	EACH	1	1

TRAFFIC SIGNALS LEGEND

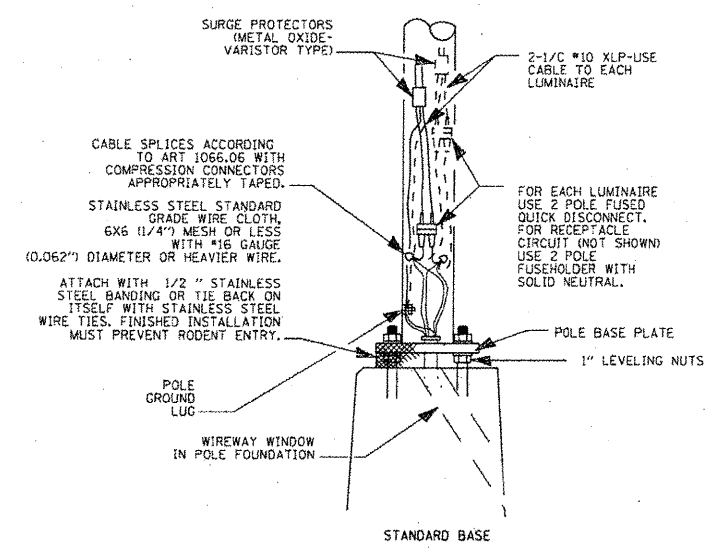
- PVCC POLYVINYL CHLORIDE CONDUIT
- EXISTING SIGNAL HEAD
- EXISTING TRAFFIC SIGNAL MAST ARM
- EXISTING HANDHOLE
- EXISTING DOUBLE HANDHOLE
- EXISTING DETECTOR LOOP
- EXISTING CONTROLLER
- EXISTING SERVICE INSTALLATION
- OR
- EXISTING SIGNAL HEAD, PEDESTRIAN
- EXISTING PEDESTRIAN PUSHBUTTON DETECTOR
- PROPOSED DETECTOR LOOP
- PROPOSED CONDUIT: "T" TRENCH, "P" PUSH, SIZE SPECIFIED
- PROPOSED REBUILD HEAVY-DUTY HANDHOLE
- PROPOSED SIGNAL
- PROPOSED PEDESTRIAN PUSHBUTTON DETECTOR
- PROPOSED SIGNAL HEAD, PEDESTRIAN

STANDARDS
 814001-01 836001-01 878001-08
 880006-01 886001-01 886006-01



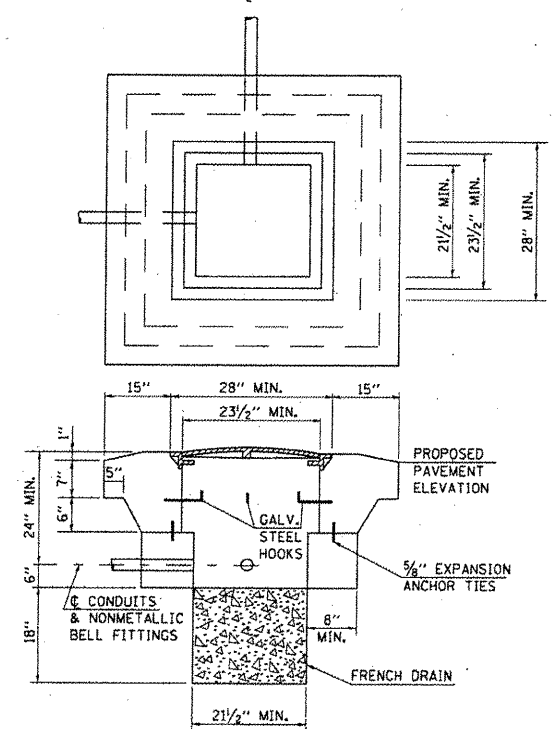
DETAIL E
(NO SCALE)
RE-USE EXISTING DETECTOR LOOP LEAD-IN CONDUIT

- DRILL OUT PAVEMENT SEALANT AND CLEAN EXISTING CONDUIT.
 - REMOVE EXISTING CABLE TO HANDHOLE.
 - INSTALL LOOP LEAD-IN CONDUCTORS IN CONDUIT.
 - SPLICE NEW DETECTOR LOOP LEAD-IN CONDUCTORS TO EXISTING LEAD-IN CABLE IN HANDHOLE.
 - FILL HOLE WITH APPROVED SEALER. PREVENT SEALER FROM ENTERING INTO CONDUIT.
- NOT A PAY ITEM. THE COST OF THIS WORK SHALL BE INCLUDED IN THE PAY ITEM "DETECTOR LOOP, TYPE I"



WIRING DETAIL
NO SCALE

- GENERAL NOTES**
- ALL TAPED SPLICES SHALL USE 2 LAYERS OF ELECTRICAL TAPE OVER 3 LAYERS OF RUBBER TAPE AS REQUIRED BY THE STANDARD SPECIFICATIONS. COAT THE FINISHED TAPED SPLICE WITH BONDING COMPOUND.
 - ALL CABLE SPLICES SHALL BE TAPED UNLESS ANOTHER METHOD HAS BEEN SPECIFICALLY APPROVED BY THE ENGINEER.
 - FOR EXAMPLE PURPOSES THE POLE IS SHOWN ON AN ANCHOR BASE. IF THE POLE IS REQUIRED TO BE SET ON A BREAKAWAY BASE, CONSULT THE STANDARD SPECIFICATIONS.
 - ALL DIMENSIONS ARE IN MILLIMETERS (INCHES) UNLESS OTHERWISE SHOWN.



DETAIL F
REBUILD TO HEAVY DUTY HANDHOLE
NOTES:

- USE 5/8" Ø EXPANSION ANCHOR TIES AT 6" CENTERS. COST OF MATERIAL AND LABOR WILL BE INCIDENTAL TO REBUILD HEAVY DUTY HANDHOLE.
- CANNOT EXCAVATE BELOW TOP OF EXISTING CONDUIT UNLESS OTHERWISE SPECIFIED TO BE REMOVED.
- THE CONTRACTOR SHALL BE RESPONSIBLE FOR ANY DAMAGE THAT MAY OCCUR TO EXISTING CABLES.
- THE MINIMUM WEIGHT OF THE FRAME AND COVER SHALL BE 260 LBS.
- THIS DETAIL IS TO BE USED IN CONJUNCTION WITH STANDARD 814001, GENERAL NOTES AND THE SPECIAL PROVISION REBUILD EXISTING HANDHOLE TO HEAVY DUTY HANDHOLE

TRAFFIC SIGNAL GENERAL NOTES

- ALL VEHICLE AND PEDESTRIAN SIGNAL HEADS SHALL HAVE 12" SECTIONS. MOUNTING HARDWARE SHALL BE UNPAINTED ALUMINUM. ALL BOLTS, SCREWS, NUTS AND WASHERS SHALL BE STAINLESS STEEL. ANTI-SEIZE PASTE COMPOUND SHALL BE USED ON ALL MOUNTING HARDWARE FIELD CONNECTIONS.
- THE LOCATION OF TRAFFIC SIGNAL POSTS SHALL BE APPROVED BY THE ENGINEER BEFORE FOUNDATIONS ARE CONSTRUCTED.
- ALL TRAFFIC SIGNAL CABLES SHALL BE #14 AWG STRANDED COPPER UNLESS OTHERWISE SPECIFIED. TERMINAL ENDS SHALL HAVE CRIMPED-ON RING TONGUE CONNECTORS.
- THE LOCATION OF ALL DETECTOR LOOPS SHALL BE APPROVED BY THE ENGINEER BEFORE ANY SLOTS ARE SAWED IN THE PAVEMENT.
- DETECTOR LOOP LEAD-IN SPLICES SHALL BE MADE IN A HANDHOLE PER SECTION 873 OF THE STANDARD SPECIFICATIONS. CONDUCTORS SHALL BE SPLICED IN A RIGID MOLD FILLED WITH NON-HARDENING EPOXY FILLER. ROSIN-CORE SOLDER SHALL BE USED.

FILE NAME =	USER NAME = #USER#	DESIGNED -	REVISIONS -
#FILE#		DRAWN -	REVISIONS -
		CHECKED -	REVISIONS -
		DATE -	REVISIONS -

STATE OF ILLINOIS
DEPARTMENT OF TRANSPORTATION

ELECTRICAL SHEET
(TRAFFIC SIGNAL SUMMARY OF QUANTITY, LEGEND, GENERAL NOTES & DETAILS)

F.A.P. RTE.	SECTION	COUNTY	TOTAL SHEETS	SHEET NO.
304/2	4061-2	MADISON	19	12
FED. ROAD DIST. NO. ILLINOIS FED. AID PROJECT			CONTRACT NO. 76660	

SCALE: SHEET NO. OF SHEETS STA. TO STA.