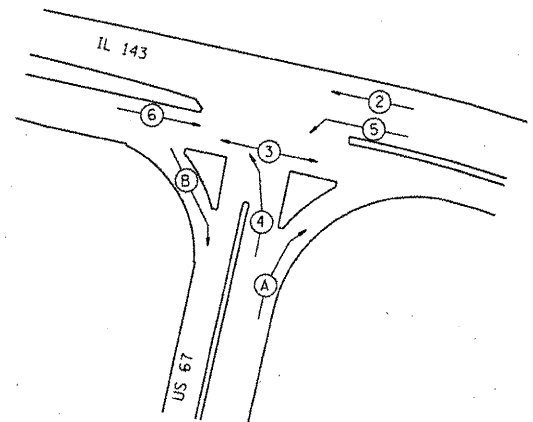


- CABLE DIAGRAM LEGEND**
- ELECTRIC CABLE IN CONDUIT
 - - - EXISTING ELECTRIC CABLE IN CONDUIT
 - CABLE SPLICE (SEE GENERAL NOTES)
 - 2/C INDICATES NUMBER OF CONDUCTORS IN CABLE
 - ID IN ELECTRIC CABLE LEAD-IN, 1 PAIR
 - CD CALL DELAY (SEE GENERAL NOTES)
 - CCO CALL CARRY OVER (SEE GENERAL NOTES)
 - SERVICE INSTALLATION
 - *6 INDICATES AMERICAN WIRE GAUGE (AWG) SIZE 6 CONDUCTORS (SEE GENERAL NOTES)

DETECTOR LOOP REQUIREMENTS AND CALCULATIONS
FOR US 67 AND IL 143

LOOP	PHASE (B)	LOOP SIZE(FT)	REQUIRED # OF TURNS	CALCULATED INDUCTANCE MICROHENRIES (μH)	CALCULATED RESISTANCE OHMS (R)
1.EB THRU CD A	6	6' X 50'-0	3-6-3	826.0	2.5
2.EB THRU CD B	6	6' X 50'-0	3-6-3	822.7	2.4
3.EB RT CD	O.L.B	6' X 75'-0	3-6-3	1198.8	3.2
4.NB CCO A	4	6' X 6'	NA	NA	NA
5.NB CCO B	4	6' X 6'	NA	NA	NA
6.NB CCO C	4	6' X 6'	NA	NA	NA
7.NB LT CD A	4	6' X 50'-0	3-6-3	839.6	3.8
8.NB LT CD B	4	6' X 50'-0	3-6-3	837.4	2.8
9.NB RT CD	O.L.A	6' X 70'-0	3-6-3	1140.7	3.4
10.WB THRU CD A	2	6' X 50'-0	NA	NA	NA
11.WB THRU CD B	2	6' X 50'-0	NA	NA	NA
12.WB LT CD A	5	6' X 50'-0	NA	NA	NA
13.WB LT CD B	5	6' X 50'-0	NA	NA	NA

THE ABOVE VALUES ARE CALCULATED OF COMBINED LOOP AND LEAD-IN INDUCTANCE AND RESISTANCE. ACTUAL MEASURED VALUES SHOULD BE WITHIN +/- 20% OF THESE VALUES.



PHASE DESIGNATION
DIAGRAM

EXISTING SEQUENCE OF OPERATION										
PHASE	1	2	3	4	5	6	7	8	OVERLAP A	OVERLAP B
MOVEMENT	NOT	WB	NOT	NB	WB LT	EB	NOT	NOT	NB RT	NOT
CONCURRENT MOVEMENT PERMITTED	USED	5 OR 6	USED	O.L.A	2	2	USED	USED	4 + 5	USED

PROPOSED SEQUENCE OF OPERATION										
PHASE	1	2	3	4	5	6	7	8	OVERLAP A	OVERLAP B
MOVEMENT	NOT	WB	WB	NB	WB LT	EB	NOT	NOT	NB RT	EB RT
CONCURRENT MOVEMENT PERMITTED	USED	5 OR 6	ONLY	O.L.A	2	2	USED	USED	4 + 5	2 + 4 + 5 + 6

• PEDESTRIAN MOVEMENT ON ACTUATION ONLY
O.L.=OVERLAP

FILE NAME =	USER NAME = #UGER#	DESIGNED -	REVISED -
#FILE#		DRAWN -	REVISED -
	PLOT SCALE = #SCALE#	CHECKED -	REVISED -
	PLOT DATE = #DATE#	DATE -	REVISED -

**STATE OF ILLINOIS
DEPARTMENT OF TRANSPORTATION**

**ELECTRICAL SHEET
(CABLE DIAGRAM)**

SCALE: _____ SHEET NO. _____ OF _____ SHEETS STA. _____ TO STA. _____

F.A.P. RTE.	SECTION	COUNTY	TOTAL SHEETS	SHEET NO.
304/2	4061-2	MADISON	19	14
FED. ROAD DIST. NO. ILLINOIS FED. AID PROJECT			CONTRACT NO. 76G60	