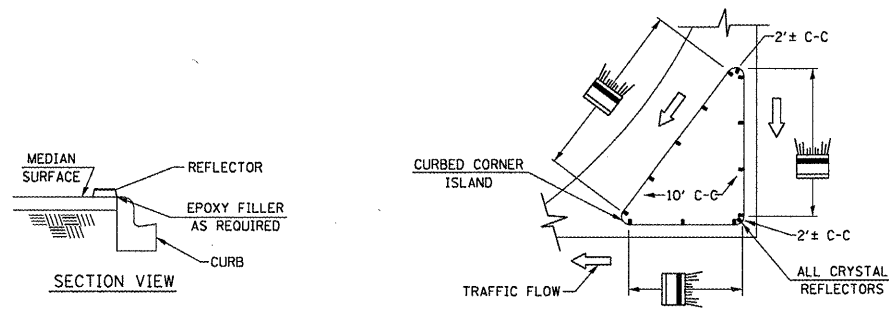
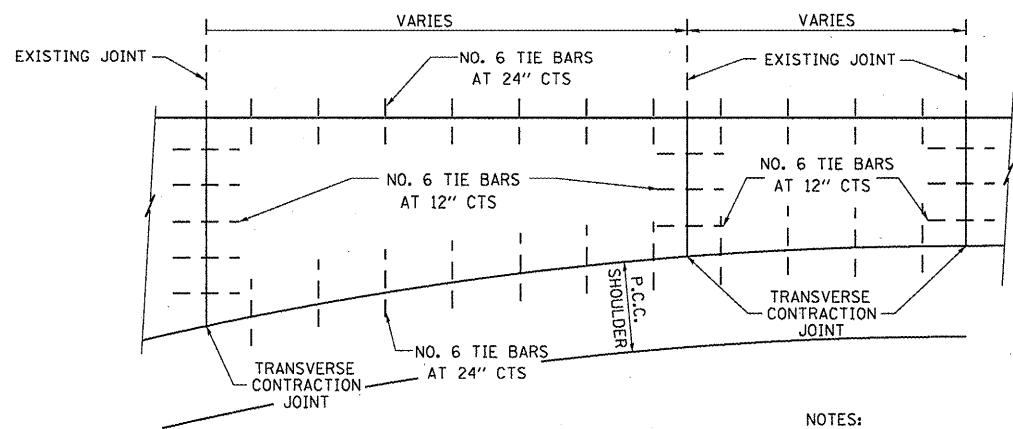


- NOTES
1. PRISMATIC REFLECTORS SHALL BE MONO-DIRECTIONAL AND POSITIONED SO THAT THE REFLECTIVE FACE IS FACING THE APPROACHING TRAFFIC.
  2. PRISMATIC REFLECTORS SHALL BE SECURED IN PLACE WITH AN EPOXY ADHESIVE.
  3. PRISMATIC REFLECTORS SHALL BE EITHER AMBER OR CRYSTAL IN COLOR.

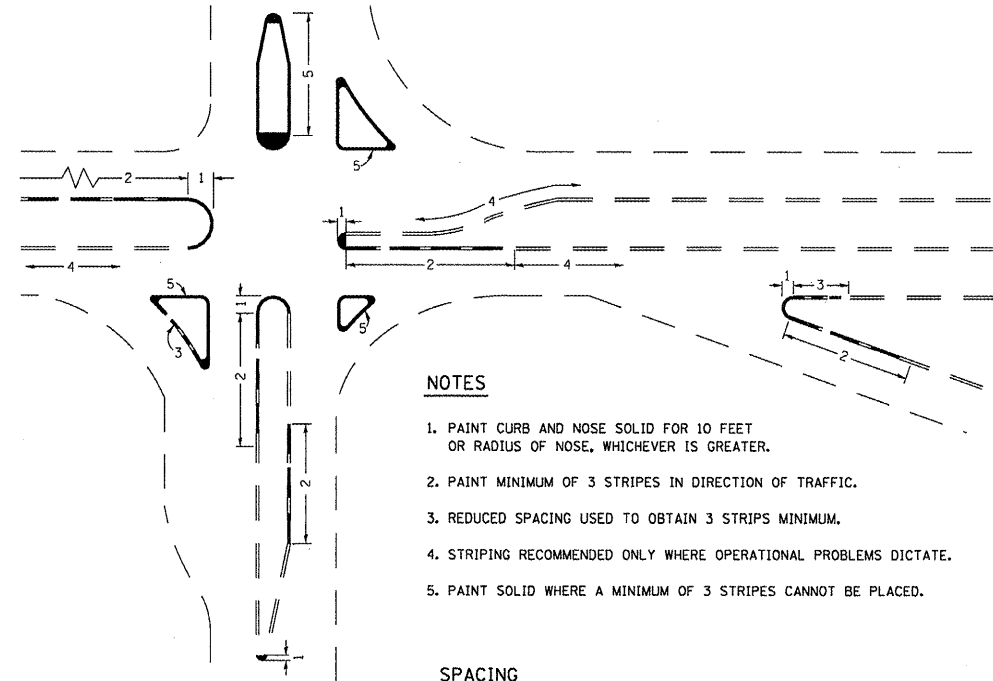


TYPICAL PLACEMENT OF PRISMATIC REFLECTORS ON CURBS  
(NO SCALE)



REINFORCEMENT DETAIL  
(NO SCALE)

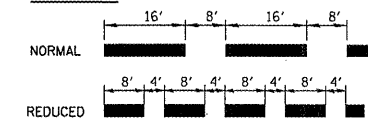
- NOTES:
- ALL REINFORCEMENT IS INCLUDED IN THE P.C.C PAVEMENT AND P.C.C. SHOULDER PAY ITEMS
  - THE INTENT IS FOR THE LOCATION OF THE NEW CONTRACTION JOINTS TO MATCH THE LOCATION OF THE EXISTING CONTRACTION JOINTS



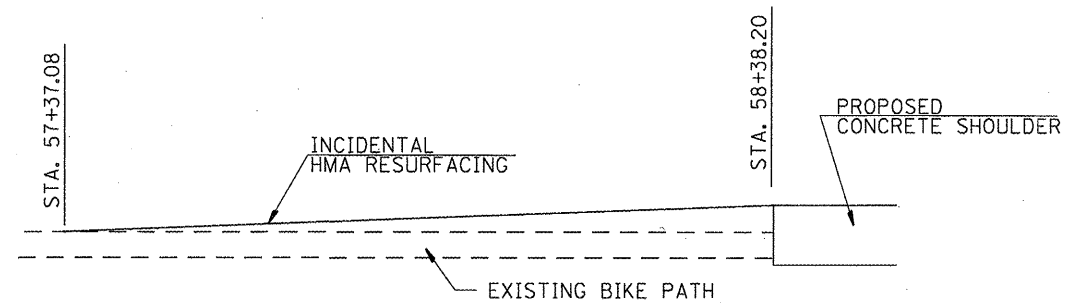
NOTES

1. PAINT CURB AND NOSE SOLID FOR 10 FEET OR RADIUS OF NOSE, WHICHEVER IS GREATER.
2. PAINT MINIMUM OF 3 STRIPES IN DIRECTION OF TRAFFIC.
3. REDUCED SPACING USED TO OBTAIN 3 STRIPS MINIMUM.
4. STRIPING RECOMMENDED ONLY WHERE OPERATIONAL PROBLEMS DICTATE.
5. PAINT SOLID WHERE A MINIMUM OF 3 STRIPES CANNOT BE PLACED.

SPACING



CURB MARKING



BIKE TRAIL  
TRANSITION DETAIL

FILE NAME =	USER NAME = #USER#	DESIGNED -	REVISED -
#FILE#		DRAWN -	REVISED -
	PLOT SCALE = #SCALE#	CHECKED -	REVISED -
	PLOT DATE = #DATE#	DATE -	REVISED -

STATE OF ILLINOIS  
DEPARTMENT OF TRANSPORTATION

DETAILS

F.A.P. RTE. 304/2	SECTION 406I-2	COUNTY MADISON	TOTAL SHEETS 19	SHEET NO. 15
SCALE: _____			SHEET NO. ____ OF ____ SHEETS STA. _____ TO STA. _____	
FED. ROAD DIST. NO. _____ ILLINOIS FED. AID PROJECT				

CONTRACT NO. 76E60