

STATE OF ILLINOIS
DEPARTMENT OF TRANSPORTATION
DIVISION OF HIGHWAYS

**PROPOSED
HIGHWAY PLANS**

FAP ROUTE 304 / FAP ROUTE 2 (US 67/IL 143)
SECTION 4061-2

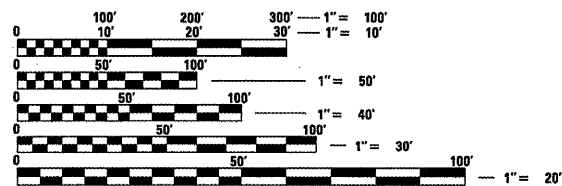
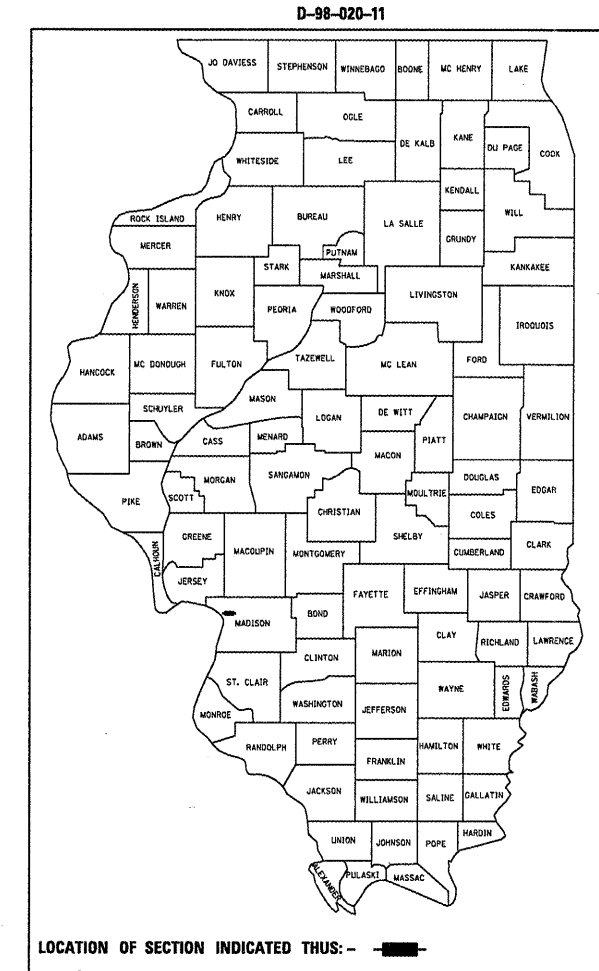
**INTERSECTION IMPROVEMENT
MADISON COUNTY**

C-98-019-11

F.A.P. RTE.	SECTION	COUNTY	TOTAL SHEETS	SHEET NO.
304/2	4061-2	MADISON	19	1
		ILLINOIS	CONTRACT NO. 76E60	

INDEX OF SHEETS

- 1 COVER SHEET
- 2 STANDARDS, GENERAL NOTES, COMMITMENTS & TIE POINTS
- 3 SUMMARY OF QUANTITIES
- 4-5 TYPICALS
- 6-7 SCHEDULES
- 8 PLAN SHEET
- 9 GEOMETRIC LAYOUT
- 10 EROSION CONTROL SHEET
- 11 PAVEMENT MARKING SHEET
- 12-14 ELECTRICAL PLAN SHEETS
- 15 DETAILS
- 16-19 CROSS SECTIONS

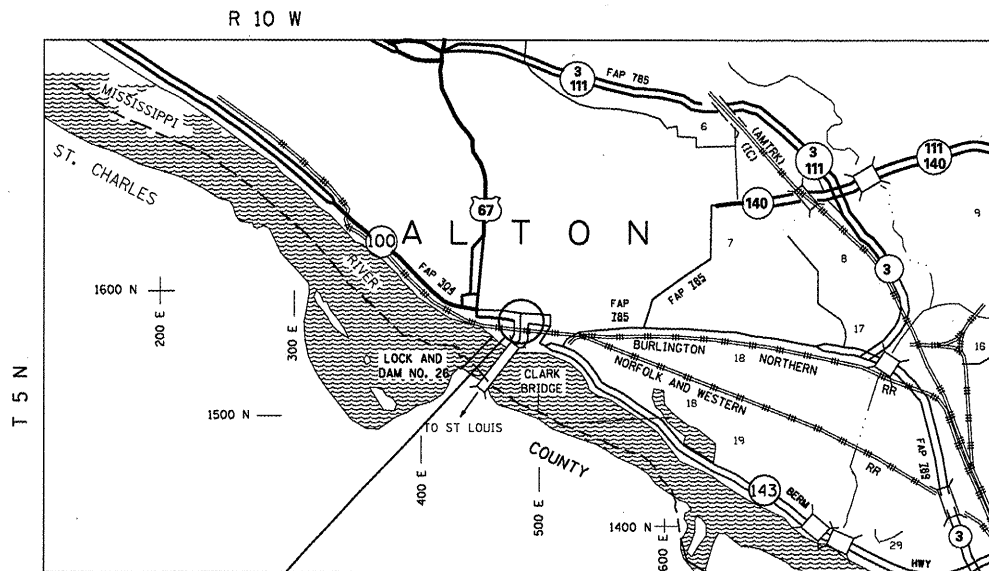


FULL SIZE PLANS HAVE BEEN PREPARED USING STANDARD ENGINEERING SCALES. REDUCED SIZED PLANS WILL NOT CONFORM TO STANDARD SCALES. IN MAKING MEASUREMENTS ON REDUCED PLANS, THE ABOVE SCALES MAY BE USED.

J.U.L.I.E.
JOINT UTILITY LOCATION INFORMATION FOR EXCAVATION
1-800-892-0123
OR 811

PROJECT ENGINEER: PATTI LEBEAU (618) 346-3179
PROJECT MANAGER: CHERYL KEPLAR (618) 346-3186

CONTRACT NO. 76E60



PROJECT LOCATION

ADT
27,100 (2010)
33,100 (2030)
MU = 2.0%
SU = 3.11%

BEG. PROJECT: 57+37.08 (US 067)
END PROJECT: 255+69.60 (US 067/IL 143)
LAT: +38.88712
LONG: -90.17275

GROSS LENGTH = 1,066 FT. = 0.20 MILE
NET LENGTH = 1,066 FT. = 0.20 MILE

STATE OF ILLINOIS
DEPARTMENT OF TRANSPORTATION
DIVISION OF HIGHWAYS

SUBMITTED March 30 20 11
Mary C Jamel
DEPUTY DIRECTOR OF HIGHWAYS, REGION 5 ENGINEER

May 13 20 11
Scott E. Stett, P.E., Jr.
Acting ENGINEER OF DESIGN AND ENVIRONMENT

May 13 20 11
Christine M. Reed
DIRECTOR OF HIGHWAYS, CHIEF ENGINEER

PRINTED BY THE AUTHORITY
OF THE STATE OF ILLINOIS

GENERAL NOTES

1. ANY EXCAVATION OR DROP-OFF OF MORE THAN 3" AT EDGE OF PAVEMENT SHALL BE PROTECTED WITH EXTENDED LEG BARRICADES AND APPROPRIATE LIGHTING.
2. THE CONTRACTOR SHALL VERIFY ALL DIMENSIONS AND CONDITIONS IN THE FIELD PRIOR TO CONSTRUCTION AND ORDERING OF MATERIALS.
3. THE RESIDENT ENGINEER SHALL VERIFY THE EXISTENCE OF HIGHWAY LIGHTING AND/OR ITS UTILITIES WITHIN THE PROJECT LIMITS. IF HIGHWAY LIGHTING AND/OR ITS EXISTS WITHIN THE PROJECT LIMITS, AND IF THESE ITEMS REQUIRE LOCATING, THE CONTRACTOR SHALL BE DIRECTED TO DO SO ACCORDING TO SECTION 803 OF THE STANDARD SPECIFICATIONS. IF 'LOCATING UNDERGROUND CABLE' IS NOT INCLUDED AS PART OF THE PLANS, THIS WORK SHALL BE PAID FOR ACCORDING TO ARTICLE 109.04 OF THE STANDARD SPECIFICATIONS.
4. ILLINOIS STATE LAW REQUIRES A 48-HOUR NOTICE BE GIVEN TO ALL UTILITIES BEFORE DIGGING. FIELD MARKING OF FACILITIES MAY BE OBTAINED BY CONTACTING J.U.L.I.E. OR FOR NON MEMBERS, THE UTILITY COMPANY DIRECTLY. AGENCIES KNOWN TO HAVE FACILITIES WITHIN THE PROJECT AREA ARE AS FOLLOWS:

UTILITY	ABOVE GROUND	BELOW GROUND
CITY OF ALTON*	X	X
AMERENIL*	X	X
AT&T ILLINOIS*	X	X
CENTERPOINT ENERGY*	X	X
CHARTER COMM., INC.*	X	X
ILLINOIS AMERICAN WATER COMPANY*	X	X

MEMBERS OF J.U.L.I.E. (800) 892-0123 ARE INDICATED BY *. NON-J.U.L.I.E. MEMBERS MUST BE NOTIFIED INDIVIDUALLY.

5. NO OVERNIGHT LANE CLOSURES WILL BE ALLOWED.
6. ALL AREAS DISTURBED FOR ANY REASON SHALL BE PERMANENTLY SEEDED AS DIRECTED BY THE ENGINEER. ALL AREAS DISTURBED BY THE CONTRACTOR OUTSIDE THE PROPOSED CONSTRUCTION LIMITS SHALL BE SEEDED AT THE CONTRACTOR'S EXPENSE.
7. ALL EXISTING AND PROPOSED RIGHT-OF-WAY AND PROPERTY LINES SHOWN ON THE PLAN SHEETS ARE GRAPHICAL REPRESENTATIONS AND SHALL NOT BE USED AS A MEANS TO ESTABLISH OWNERSHIP. IN ALL MATTERS RELATING TO RIGHT-OF-WAY, THE PLAT OF HIGHWAYS SHALL BE THE CONTROLLING DOCUMENT.
8. THE AGGREGATE BASE COURSE, TYPE A SHALL BE PLACED THE SAME DAY AS THE PAVED SHOULDER IS REMOVED IN ORDER TO KEEP THE RESULTING DROP OFF LESS THAN 12".
9. A QUANTITY FOR 'CHANGEABLE MESSAGE SIGN' HAS BEEN INCLUDED IN THE PLANS TO BE USED TO INFORM CYCLISTS OF THE CLOSURE OF THE BIKE ACCOMMODATION ACROSS THE CLARK BRIDGE. PLACEMENT OF THE CHANGEABLE SIGN TO BE DETERMINED BY THE RESIDENT ENGINEER.
10. THE FOLLOWING MIXTURE REQUIREMENTS ARE APPLICABLE FOR THIS PROJECT:

MIXTURE USE	INCIDENTAL SURF
AC/PG	PG 64-22
RAP % (MAX)	SEE SPEC.
DESIGN AIR VOIDS	4.0% @ Ndes=50
MIX COMPOSITION	
(GRADATION MIXTURE)	
FRICITION AGG	MIXTURE "C"

STANDARDS

000001-06
 280001-05
 420101-04
 424001-05
 483001-04
 610001-05
 630001-09
 630301-05
 631031-09
 635011-02
 701701-07
 701901-01
 781001-03
 814001-02
 836001
 878001-08
 880006-01
 886001-01
 886006-01

COMMENTS

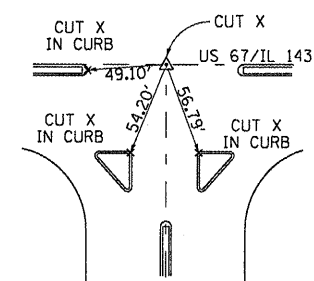
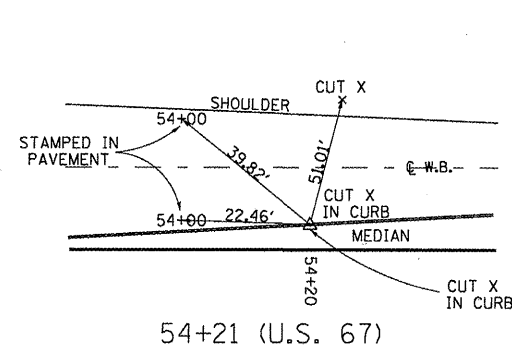
NONE

PERTINENT INFORMATION

TWO WEEKS PRIOR TO THE START OF THE PROJECT THE RESIDENT ENGINEER/TECHNICIAN SHALL CONTACT THESE ENTITIES TO NOTIFY THEM OF THE CLOSURE OF BIKE TRAFFIC ACROSS THE CLARK BRIDGE.

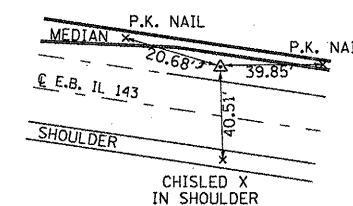
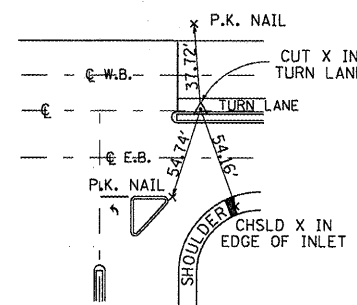
- CITY OF ALTON: WILLIAM KERR 618-463-3500
- ALTON VISITORS CENTER: SUZANNE HALBROOK 800-465-6676
- GREAT RIVERS GREENWAY DISTRICT: SUSAN TRAUTMAN 314-346-7009
- MADISON COUNTY TRANSIT TRAILS: MARK STEYER 618-874-7433
- TRAILNET: KEVIN NEILL 314-416-9930
- METRO EAST PARKS AND RECREATIONAL DISTRICT: MIKE BUEHLHORN 618-346-4905

IN ORDER TO ACCOMMODATE THE PROPOSED CONSTRUCTION, THE BIKE ACCOMMODATION ACROSS THE CLARK BRIDGE MAY BE CLOSED FOR A PERIOD OF FIVE WORKING DAYS, COMMENCING AT 9:00 A.M. MONDAY AND RE-OPENING AT 3:00 P.M. FRIDAY OF THE SAME WEEK.



54+21 (U.S. 67)

P.I. 59+59.88 @ 256+77.35



P.C. 60+50.86

64+00.00 (IL 143)

BENCH MARKS

BM#1: R.R. SPIKE IN POWER POLE
 STA: 55+22.77
 OFFSET: 71.80(LT)

BM#2: CHISELED ON MAST
 ARM BASE
 STA 60+54.95
 OFFSET: 68.91(RT)

BM#3: CHISELED ON MAST
 ARM BASE
 STA 64+84.50
 OFFSET: 61.30(LT)

FILE NAME =	USER NAME = #USER#	DESIGNED -	REVISED -
#FILE#		DRAWN -	REVISED -
	PLOT SCALE = #SCALE#	CHECKED -	REVISED -
	PLOT DATE = #DATE#	DATE -	REVISED -

**STATE OF ILLINOIS
 DEPARTMENT OF TRANSPORTATION**

**GENERAL NOTES, STANDARDS,
 COMMITMENTS & TIE POINTS**

F.A.P. RTE.	SECTION	COUNTY	TOTAL SHEETS	SHEET NO.
304/2	4061-2	MADISON	19	2
			CONTRACT NO. 76E60	
FED. ROAD DIST. NO. ILLINOIS FED. AID PROJECT				

SCALE: _____ SHEET NO. ___ OF ___ SHEETS STA. _____ TO STA. _____

SUMMARY OF QUANTITIES

SUMMARY OF QUANTITIES			URBAN TOTAL QUANTITIES	CONSTRUCTION TYPE CODE			SUMMARY OF QUANTITIES			URBAN TOTAL QUANTITIES	CONSTRUCTION TYPE CODE		
CODE NO	ITEM	UNIT		100% STATE 0004	-----	-----	CODE NO	ITEM	UNIT		100% STATE 0004	-----	-----
20200100	EARTH EXCAVATION	CU YD	183	183		70300210	TEMPORARY PAVEMENT MARKING LETTERS AND SYMBOLS	SQ FT	110	110			
25000210	SEEDING, CLASS 2A	ACRE	0.25	0.25		70300220	TEMPORARY PAVEMENT MARKING - LINE 4"	FOOT	1790	1790			
25000400	NITROGEN FERTILIZER NUTRIENT	POUND	23	23		70300250	TEMPORARY PAVEMENT MARKING - LINE 8"	FOOT	568	568			
25000500	PHOSPHORUS FERTILIZER NUTRIENT	POUND	23	23		70300260	TEMPORARY PAVEMENT MARKING - LINE 12"	FOOT	357	357			
25000600	POTASSIUM FERTILIZER NUTRIENT	POUND	23	23		70300280	TEMPORARY PAVEMENT MARKING - LINE 24"	FOOT	68	68			
25100630	EROSION CONTROL BLANKET	SO YD	308	308		78003110	PERFORMED PLASTIC PAVEMENT MARKING, TYPE B - LINE 4"	FOOT	1790	1790			
28000250	TEMPORARY EROSION CONTROL SEEDING	POUND	75	75		78003140	PERFORMED PLASTIC PAVEMENT MARKING, TYPE B - LINE 8"	FOOT	568	568			
28000400	PERIMETER EROSION BARRIER	FOOT	209	209		* 78008200	POLYUREA PAVEMENT MARKING TYPE I - LETTERS AND SYMBOLS	SQ FT	110	110			
35100100	AGGREGATE BASE COURSE, TYPE A	TON	263	263		* 78008250	POLYUREA PAVEMENT MARKING TYPE I - LINE 12"	FOOT	357	357			
40800050	INCIDENTAL HOT-MIX ASPHALT SURFACING	TON	134	134		* 78008270	POLYUREA PAVEMENT MARKING TYPE I - LINE 24"	FOOT	68	68			
42000401	PORTLAND CEMENT CONCRETE PAVEMENT 9" (JOINTED)	SO YD	107	107		* 78100100	RAISED REFLECTIVE PAVEMENT MARKER	EACH	47	47			
42001300	PROTECTIVE COAT	SO YD	469	469		* 78200300	PRISMATIC CURB REFLECTOR	EACH	48	48			
42400800	DETECTABLE WARNINGS	SO FT	32	32		* 78200410	GUARDRAIL MARKERS, TYPE A	EACH	5	5			
44000100	PAVEMENT REMOVAL	SO YD	119	119		* 78201000	TERMINAL MARKER - DIRECT APPLIED	EACH	1	1			
44003100	MEDIAN REMOVAL	SO FT	535	535		78300100	PAVEMENT MARKING REMOVAL	SO FT	600	600			
44004250	PAVED SHOULDER REMOVAL	SO YD	196	196		78300200	RAISED REFLECTIVE PAVEMENT MARKER REMOVAL	EACH	28	28			
48101200	AGGREGATE SHOULDERS, TYPE B	TON	10	10		80300100	LOCATING UNDERGROUND CABLE	FOOT	100	100			
48300400	PORTLAND CEMENT CONCRETE SHOULDERS 9"	SO YD	263	263		81012300	CONDUIT IN TRENCH, 1" DIA., PVC	FOOT	40	40			
60107600	PIPE UNDERDRAINS 4"	FOOT	221	221		81021320	CONDUIT PUSHED, 1 1/2" DIA., PVC	FOOT	45	45			
60260100	INLETS TO BE ADJUSTED	EACH	1	1		83600300	LIGHT POLE FOUNDATION, 30" DIAMETER	FOOT	7	7			
60262700	INLETS TO BE RECONSTRUCTED	EACH	1	1		84200804	REMOVAL OF POLE FOUNDATION	EACH	1	1			
60600605	CONCRETE CURB, TYPE B	FOOT	211	211		* 87300815	ELECTRIC CABLE IN TRENCH, SERVICE, NO. 6 3C	FOOT	500	500			
60603500	COMBINATION CONCRETE CURB AND GUTTER, TYPE B-6.06	FOOT	109	109		* 87301225	ELECTRIC CABLE IN CONDUIT, SIGNAL NO. 14 3C	FOOT	550	550			
60605000	COMBINATION CONCRETE CURB AND GUTTER, TYPE B-6.24	FOOT	289	289		* 87301245	ELECTRIC CABLE IN CONDUIT, SIGNAL NO. 14 5C	FOOT	210	210			
60618300	CONCRETE MEDIAN SURFACE, 4 INCH	SO FT	895	895		* 87301255	ELECTRIC CABLE IN CONDUIT, SIGNAL NO. 14 7C	FOOT	145	145			
* 63000001	STEEL PLATE BEAM GUARDRAIL, TYPE A, 6 FOOT POSTS	FOOT	200	200		* 87502680	TRAFFIC SIGNAL POST, ALUMINUM 14 FT.	EACH	3	3			
* 63100085	TRAFFIC BARRIER TERMINAL, TYPE 6	EACH	1	1		87800100	CONCRETE FOUNDATION, TYPE A	FOOT	3.5	3.5			
* 63100167	TRAFFIC BARRIER TERMINAL, TYPE 1 (SPECIAL) TANGENT	EACH	1	1		87900200	DRILL EXISTING HANDHOLE	EACH	1	1			
63200310	GUARDRAIL REMOVAL	FOOT	225	225		* 88040070	SIGNAL HEAD, POLYCARBONATE, LED, 1-FACE, 3-SECTION, BRACKET MOUNTED	EACH	2	2			
67000400	ENGINEER'S FIELD OFFICE, TYPE A	CAL MO	3	3									
67100100	MOBILIZATION	L SUM	1	1									
70102635	TRAFFIC CONTROL AND PROTECTION, STANDARD 701701	L SUM	1	1									
70103815	TRAFFIC CONTROL SURVEILLANCE	CAL DA	10	10									
70106800	CHANGEABLE MESSAGE SIGN	CAL MO	1	1									

* SPECIALTY ITEM

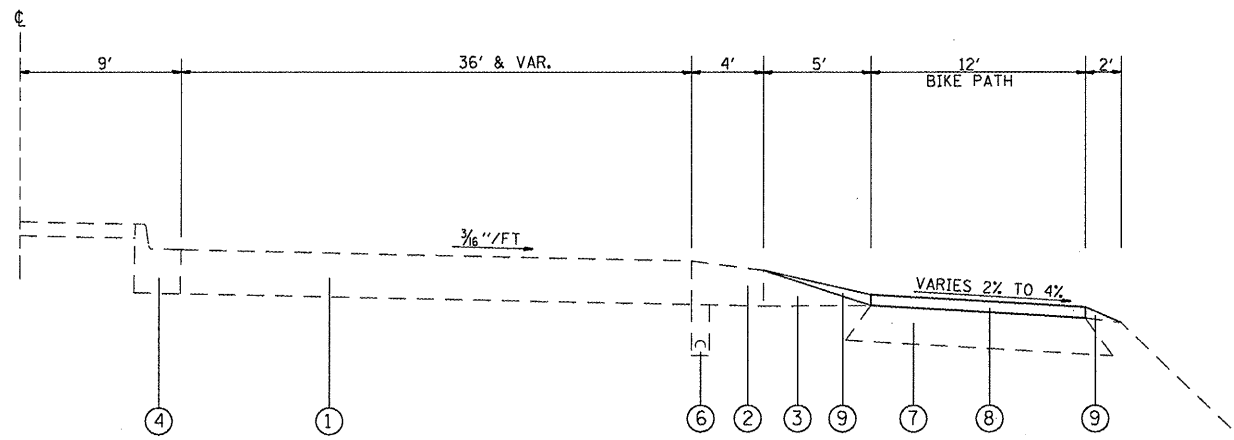
FILE NAME =	USER NAME = #USER#	DESIGNED - ---	REVISED - ---	STATE OF ILLINOIS DEPARTMENT OF TRANSPORTATION	SUMMARY OF QUANTITIES	F.A.P. RTE.	SECTION	COUNTY	TOTAL SHEETS	SHEET NO.
#FILE#		DRAWN - ---	REVISED - ---			304/2	4061-2	MADISON	19	3
		CHECKED - ---	REVISED - ---			SCALE: _____ SHEET NO. ___ OF ___ SHEETS STA. _____ TO STA. _____		FED. ROAD DIST. NO. _ ILLINOIS FED. AID PROJECT		
		DATE - -----	REVISED - ---							

SUMMARY OF QUANTITIES

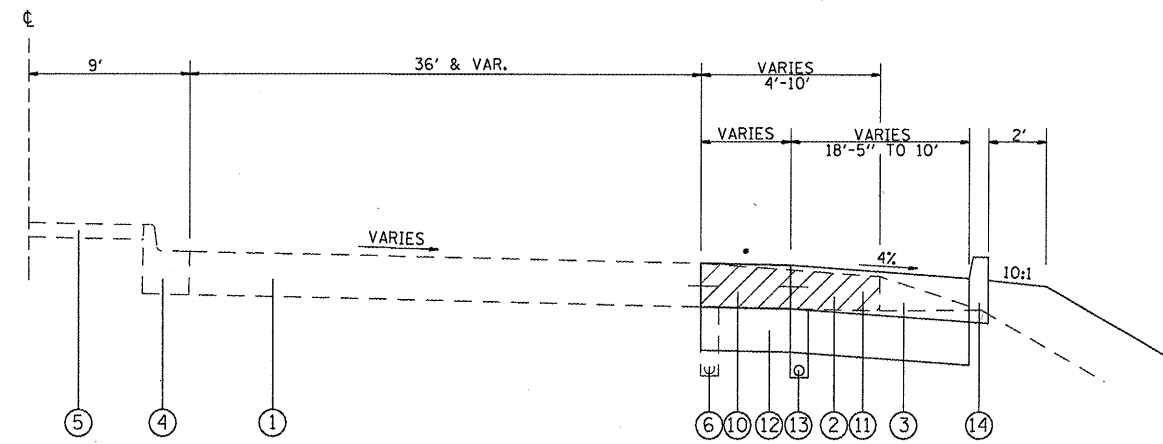
SUMMARY OF QUANTITIES			URBAN TOTAL QUANTITIES	CONSTRUCTION TYPE CODE			SUMMARY OF QUANTITIES			TOTAL QUANTITIES	CONSTRUCTION TYPE CODE		
CODE NO	ITEM	UNIT		100% STATE 0004	-----	-----	CODE NO	ITEM	UNIT		0004	-----	-----
* 88040150	SIGNAL HEAD, POLYCARBONATE, LED, 1-FACE, 5-SECTION, BRACKET MOUNTED	EACH	2	2									
* 88102710	PEDESTRIAN SIGNAL HEAD, LED, 1-FACE, BRACKET MOUNTED	EACH	4	4									
* 88600600	DETECTOR LOOP REPLACEMENT	FOOT	1170	1170									
* 88800100	PEDESTRIAN PUSH-BUTTON	EACH	3	3									
* 89502200	MODIFY EXISTING CONTROLLER	EACH	1	1									
* 89502210	MODIFY EXISTING CONTROLLER CABINET	EACH	1	1									
* 89502350	REMOVE AND REINSTALL ELECTRIC CABLE FROM CONDUIT	FOOT	2680	2680									
89502375	REMOVE EXISTING TRAFFIC SIGNAL EQUIPMENT	EACH	1	1									
89502378	REBUILD EXISTING HANDHOLE TO HEAVY-DUTY HANDHOLE	EACH	1	1									
X7830070	GROOVING FOR RECESSED PAVEMENT MARKING 5"	FOOT	1790	1790									
X7830076	GROOVING FOR RECESSED PAVEMENT MARKING 9"	FOOT	568	568									
X8440116	RELOCATE EXISTING LIGHTING UNIT, SPECIAL	EACH	1	1									
* Z0036200	PAINT CURB	FOOT	389	389									
Z0040530	PIPE UNDERDRAIN REMOVAL	FOOT	221	221									

***SPECIALTY ITEM**

FILE NAME =	USER NAME = #USER#	DESIGNED -	REVISED -	STATE OF ILLINOIS DEPARTMENT OF TRANSPORTATION	SUMMARY OF QUANTITIES	F.A.P. RTE.	SECTION	COUNTY	TOTAL SHEETS	SHEET NO.	
#FILE#		DRAWN -	REVISED -			304/2	4061-2	MADISON	19	4	
		CHECKED -	REVISED -			SCALE: _____ SHEET NO. ___ OF ___ SHEETS STA. _____ TO STA. _____		CONTRACT NO. 76E60			
		DATE -	REVISED -			FED. ROAD DIST. NO. _____ ILLINOIS FED. AID PROJECT					



CROSS SECTION
(US 67)
STA. 57+37.08 TO STA. 58+38.20



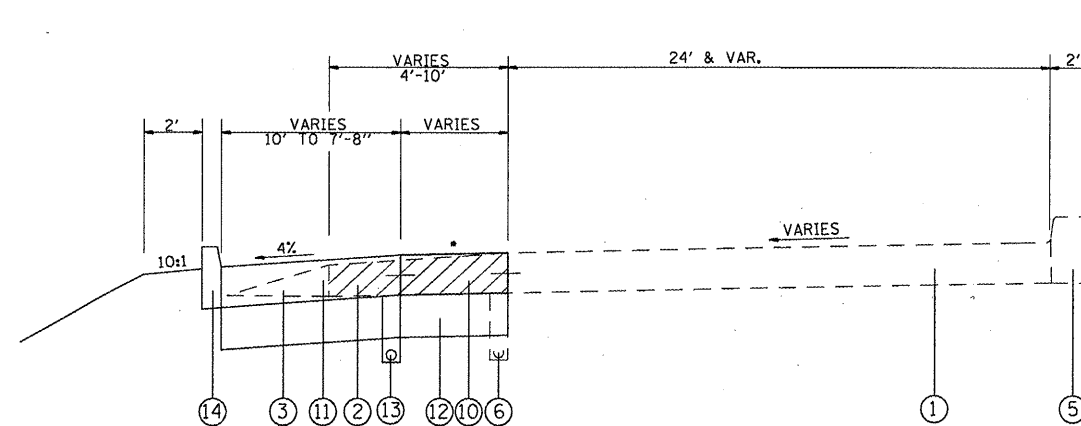
CROSS SECTION
(US 67)
STA. 58+38.20 TO STA. 59+27.40

-PAVED SHOULDER REMOVAL

*MATCH EXISTING ROADWAY SLOPE

LEGEND

- ① EXISTING JOINTED CEMENT CONCRETE PAVEMENT 9"
- ② EXISTING PORTLAND CEMENT CONCRETE SHOULDERS
- ③ EXISTING AGGREGATE SHOULDERS
- ④ EXISTING CONCRETE CURB & GUTTER
- ⑤ EXISTING CONCRETE MEDIAN
- ⑥ EXISTING PIPE UNDERDRAINS (TO BE REMOVED)
- ⑦ EXISTING HMA SURFACING 6"
- ⑧ PROPOSED INCIDENTAL HMA SURFACING
- ⑨ PROPOSED AGGREGATE SHOULDERS, TYPE B
- ⑩ PROPOSED P.C.C. PAVEMENT 9"
- ⑪ PROPOSED P.C.C. SHOULDERS 9"
- ⑫ PROPOSED AGGREGATE BASE COURSE, TYPE A 12"
- ⑬ PROPOSED PIPE UNDERDRAINS 4"
- ⑭ PROPOSED CONCRETE CURB TYPE B



*MATCH EXISTING ROADWAY SLOPE

CROSS SECTION
(US 67 TO CLARK BRIDGE)
STA. 254+61.12 TO STA. 255+69.50

-PAVED SHOULDER REMOVAL

FILE NAME =	USER NAME = #USER#	DESIGNED -	REVISED -
#FILEL#		DRAWN -	REVISED -
	PLOT SCALE = #SCALE#	CHECKED -	REVISED -
	PLOT DATE = #DATE#	DATE -	REVISED -

STATE OF ILLINOIS
DEPARTMENT OF TRANSPORTATION

TYPICAL SECTIONS

SCALE: _____ SHEET NO. ___ OF ___ SHEETS STA. _____ TO STA. _____

F.A.P. RTE.	SECTION	COUNTY	TOTAL SHEETS	SHEET NO.
304/2	406I-2	MADISON	19	5
FED. ROAD DIST. NO. _____			ILLINOIS FED. AID PROJECT	
CONTRACT NO. 76E60				

P.C.C PAVEMENT CONCRETE SCHEDULE					
LOCATION			AGG. BASE COURSE, TYPE A 12"	P.C.C. PAVEMENT 9"	PROTECTIVE COAT
STA.	to	STA.	(TON)	(SQ YD)	(SQ YD)
58+38.20	to	58+55.73	2.68	3.82	3.82
58+55.73	to	58+62.08	1.23	1.76	1.76
58+62.08	to	255+69.59	35.63	50.90	50.90
255+69.59	to	255+53.90	8.98	12.83	12.83
255+53.90	to	255+09.08	18.35	26.22	26.22
255+09.08	to	254+61.12	7.46	10.66	10.66
TOTALS			75	107	107

SHOULDER/CURB SCHEDULE								
LOCATION			PAVED SHOULDER REMOVAL	P.C.C SHOULDERS 9"	AGG. BASE COURSE, TYPE A	PROTECTIVE COAT	AGG. SHOULDERS TYPE B	CONCRETE CURB, TYPE B
STA.	to	STA.	(SQ YD)	(SQ YD)	(TON)	(SQ YD)	(TON)	(FOOT)
57+37.08	to	58+38.20					9.83	
58+38.20	to	58+62.08	9.76	34.17	23.92	34.17		17.20
58+62.08	to	255+69.59	68.47	118.13	82.68	118.13		85.00
255+69.59	to	255+53.90	17.30	18.89	13.22	18.89		17.00
255+53.90	to	255+09.08	49.33	46.90	32.83	46.90		43.74
255+09.08	to	254+61.12	51.42	44.18	30.92	44.18		47.96
TOTALS			196	263	184	263	10	211

LOCATION			PAVEMENT MARKING REMOVAL	PREFORMED PLASTIC						POLYUREA			RAISED REFLECTIVE PAVEMENT MARKER REMOVAL	RAISED REFLECTIVE PAVEMENT MARKERS	COMMENTS
				4"		8"		GROOVING FOR RECESSED PAV. MARKING 5"	GROOVING FOR RECESSED PAV. MARKING 9"	12"	24"	LETTERS & SYMBOLS			
				SOLID YELLOW	SKIP-DASH WHITE	SOLID WHITE	SOLID WHITE			SOLID WHITE	STOP BARS				
STATION	TO	STATION	SQ FT	FOOT	FOOT	FOOT	FOOT	FOOT	FOOT	FOOT	FOOT	SQ FT	EACH	EACH	
55+18.50	TO	57+18.50			67			67							
57+18.50	TO	58+74.00	145			156		156				31.2	2	4	
58+74.00	TO	60+33.00	115		36			36							
60+33.00	TO	62+03.00				171		171				31.2	2	5	
62+03.00	TO	63+68.00			55			55							
US 67 (L.T.)															
254+61.20	TO	256+45.00	220	143		414	343	557	343	213	26		12	19	
US 67 (RT.)															
254+61.20	TO	256+45.00	120	143		605	225	748	225	144	42	46.8	12	19	
SUB-TOTALS			600	286	158	1346	568	1790.00	568.00	357	68	109.20	28.00	47.00	
TOTAL			600		1790		568	1790	568	357	68	110	28	47	

FILE NAME *	USER NAME * #USER#	DESIGNED - ---	REVISED - ---	STATE OF ILLINOIS DEPARTMENT OF TRANSPORTATION	SCHEDULES	F.A.P. RTE.	SECTION	COUNTY	TOTAL SHEETS	SHEET NO.	
#FILE#		DRAWN - ---	REVISED - ---			304/2	4061-2	MADISON	19	6	
		CHECKED - ---	REVISED - ---			CONTRACT NO. 76E60					
		DATE - ---	REVISED - ---			FED. ROAD DIST. NO. [ILLINOIS] FED. AID PROJECT					
PLDT SCALE = #SCALE#				SCALE: _____	SHEET NO. _____ OF _____ SHEETS	STA. _____ TO STA. _____					

MEDIAN/CURB & GUTTER SCHEDULE									
LOCATION			COMB. CONCRETE CURB & GUTTER, TYPE B-6.06	COMB. CONCRETE CURB & GUTTER, TYPE B-6.24	CONCRETE MEDIAN SURFACE 4"	PROTECTIVE COAT	PRISMATIC CURB REFLECTOR	PAINT CURB	DETECTABLE WARNINGS
			FOOT	FOOT	SQ FT	SQ YD	EACH	FOOT	SQ FT
256+03.40(LT)	TO	256+34.45(LT)	51.00	129.00	377.00	41.89	24	134	16
255+98.90(RT)	TO	256+33.57(RT)	58.00	160.00	518.00	57.56	24	153	16
TOTALS			109	289	895	99	48	287	32

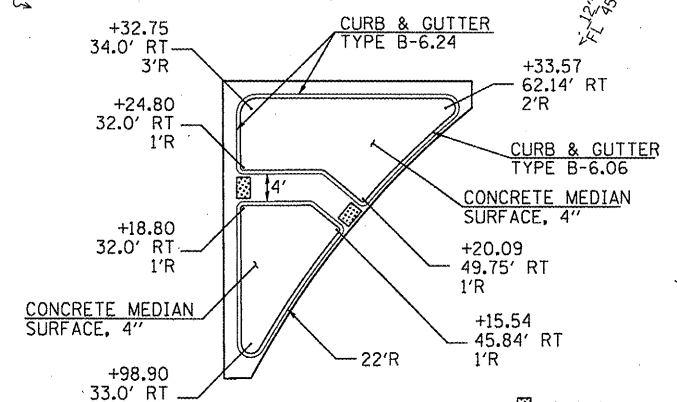
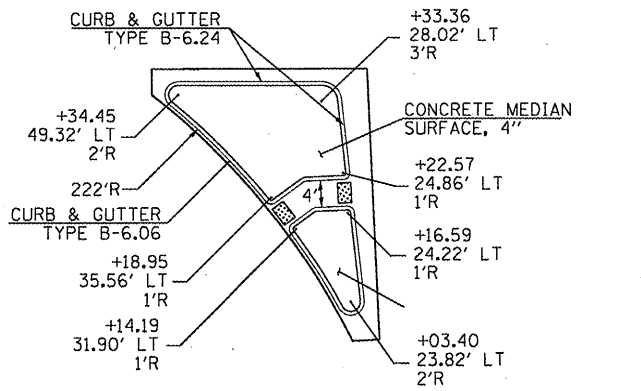
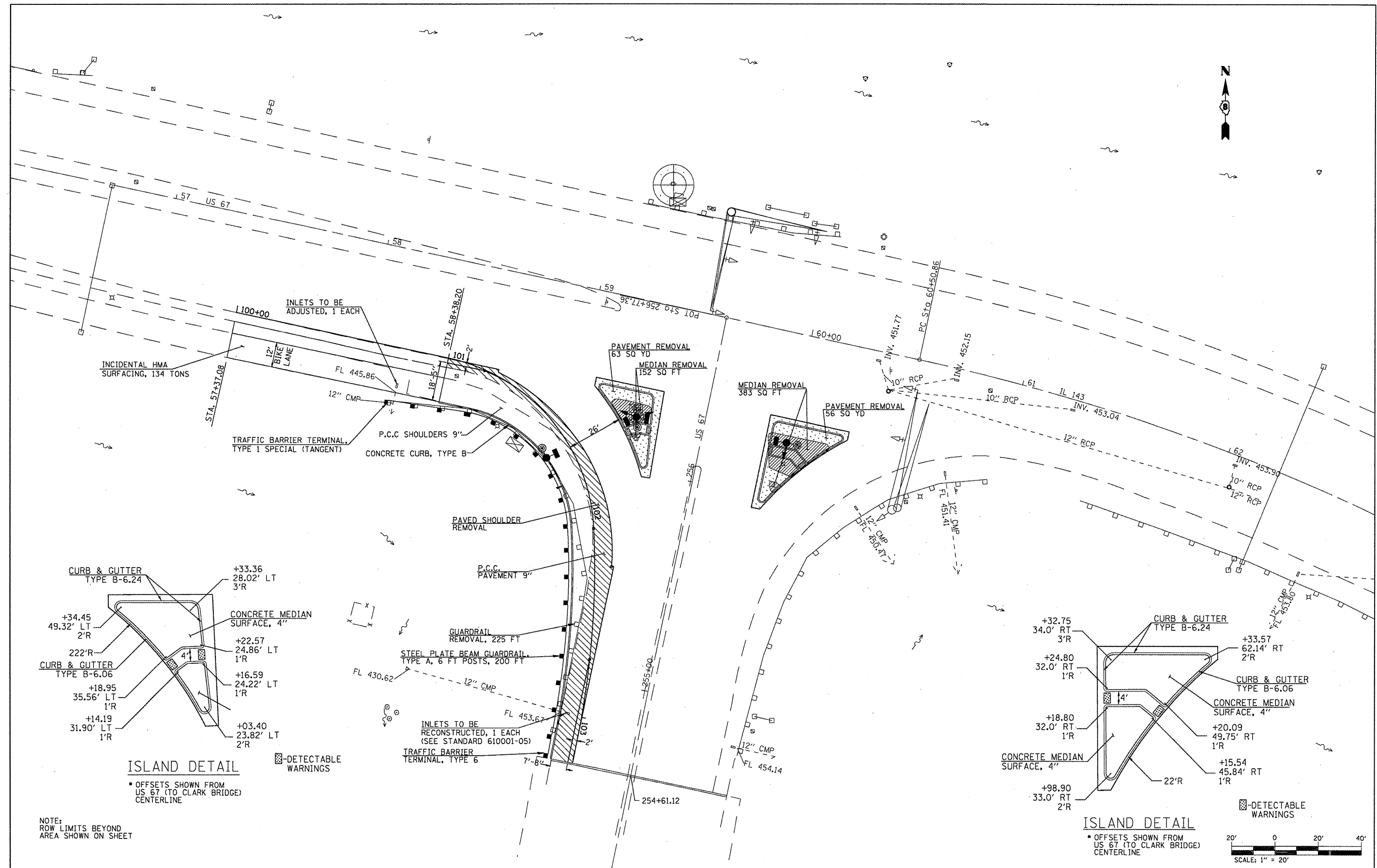
UNDERDRAIN SCHEDULE					
LOCATION			PIPE UNDERDRAIN REMOVAL	PIPE UNDERDRAIN 4"	COMMENTS
			(FOOT)	(FOOT)	
STA.	to	STA.			
58+38.20	to	58+55.73	17.20	17.20	
58+55.73	to	58+62.08	6.00	6.00	
58+62.08	to	255+69.59	87.76	87.76	
255+69.59	to	255+53.90	17.75	17.75	
255+53.90	to	255+09.08	43.74	43.74	
255+09.08	to	254+61.12	47.96	47.96	
TOTALS			221	221	

EARTHWORK SCHEDULE

STA	to	STA	UNADJUSTED EXCAVATION (CU YD)	EARTH EXCAVATION ADJUSTED FOR 25% SHINKAGE (CU YD)	EMBANKMENT (CU YD)	EARTHWORK BALANCE WASTE (+) OR SHORTAGE (-) (CU YD)
100+75.00	to	101+00.00	9.4	7.1	5.0	2.1
101+00.00	to	101+25.00	20.6	15.5	1.3	14.2
101+25.00	to	101+50.00	24.0	18.0	0.2	17.8
101+50.00	to	101+75.00	24.4	18.3	0.0	18.3
101+75.00	to	102+00.00	21.4	16.1	0.2	15.9
102+00.00	to	102+25.00	20.7	15.5	45.8	-30.3
102+25.00	to	102+50.00	18.5	13.9	51.8	-37.9
102+50.00	to	102+75.00	13.6	10.2	7.4	2.8
102+75.00	to	103+00.00	10.5	7.9	1.7	6.2
103+00.00	to	103+21.04	19.4	14.6	2.3	12.3
SUB-TOTAL =			182.5	137.1	115.7	21.4
ROUNDED TOTAL =			183	137	116	21

EROSION CONTROL SCHEDULE								
LOCATION			TEMP. EROSION CONTROL SEEDING (lb)	NITROGEN FERTILIZER (lb)	PHOSPHORUS FERTILIZER (lb)	POTASSIUM FERTILIZER (lb)	EROSION CONTROL BLANKET (sq yd)	PERIMETER EROSION BARRIER (foot)
STA	to	STA						
58+38.20	to	254+61.12	75.0	22.5	22.5	22.5	308	209
TOTAL =			75	23	23	23	308	209

FILE NAME =	USER NAME = #USER#	DESIGNED -	REVISED -	STATE OF ILLINOIS DEPARTMENT OF TRANSPORTATION	SCHEDULES	F.A.P. RTE.	SECTION	COUNTY	TOTAL SHEETS	SHEET NO.	
#FILE#		DRAWN -	REVISED -			304/2	4061-2	MADISON	19	7	
	PLOT SCALE = #SCALE#	CHECKED -	REVISED -			CONTRACT NO. 76E60					
	PLOT DATE = #DATE#	DATE -	REVISED -			FED. ROAD DIST. NO. - [ILLINOIS] FED. AID PROJECT					



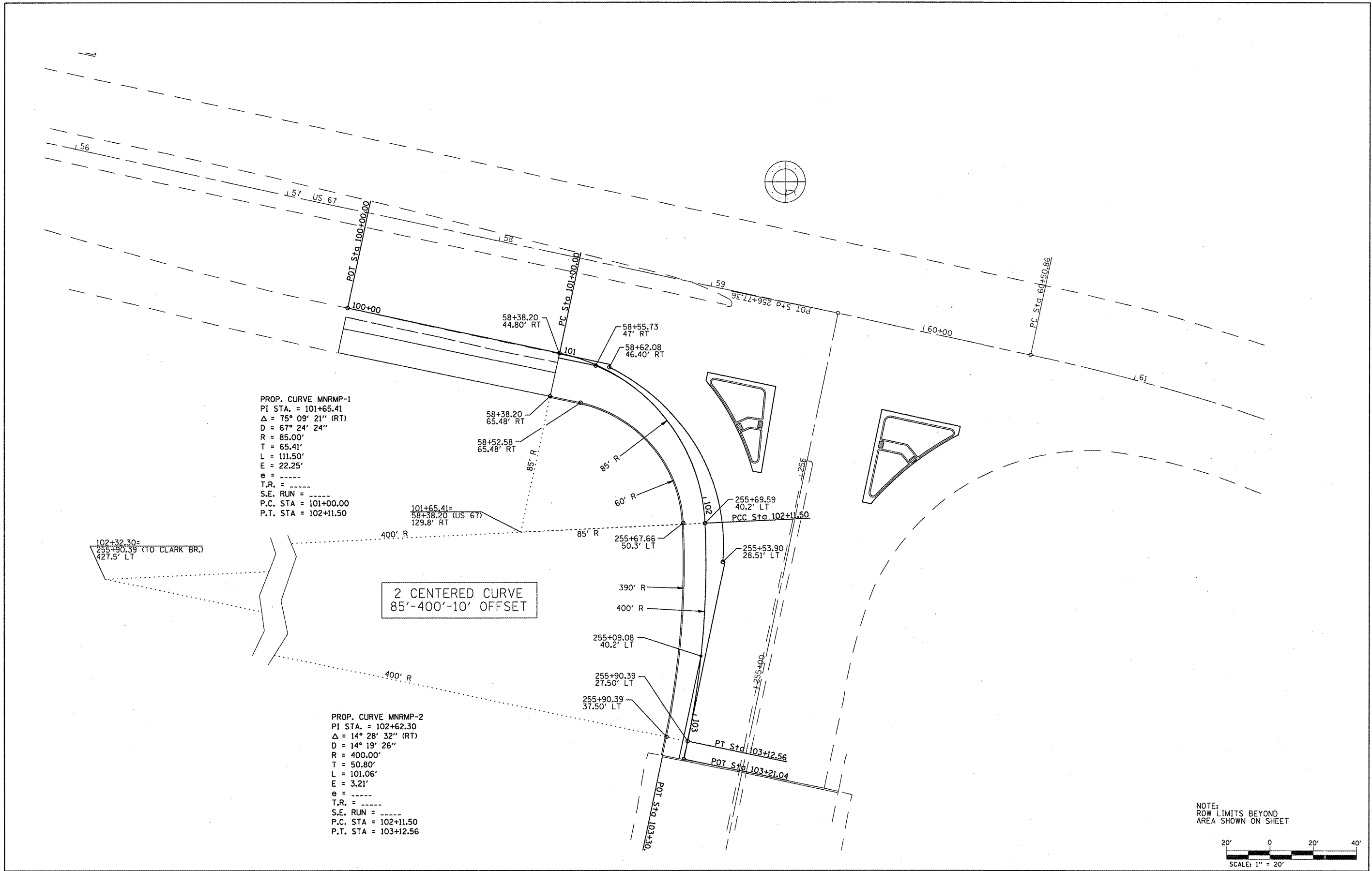
FILE NAME #	USER NAME #USER#	DESIGNED -	REVISED -
#FILE#		DRAWN -	REVISED -
	PLOT SCALE = #SCALE#	CHECKED -	REVISED -
	PLOT DATE = #DATE#	DATE -	REVISED -

**STATE OF ILLINOIS
DEPARTMENT OF TRANSPORTATION**

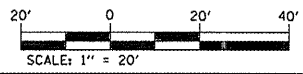
PLAN SHEET

SCALE: _____ SHEET NO. ____ OF ____ SHEETS STA. _____ TO STA. _____

F.A.P. RTE.	SECTION	COUNTY	TOTAL SHEETS	SHEET NO.
304/2	4061-2	MADISON	19	8
ILLINOIS FED. AID PROJECT			CONTRACT NO. 76E60	



NOTE:
 ROW LIMITS BEYOND
 AREA SHOWN ON SHEET



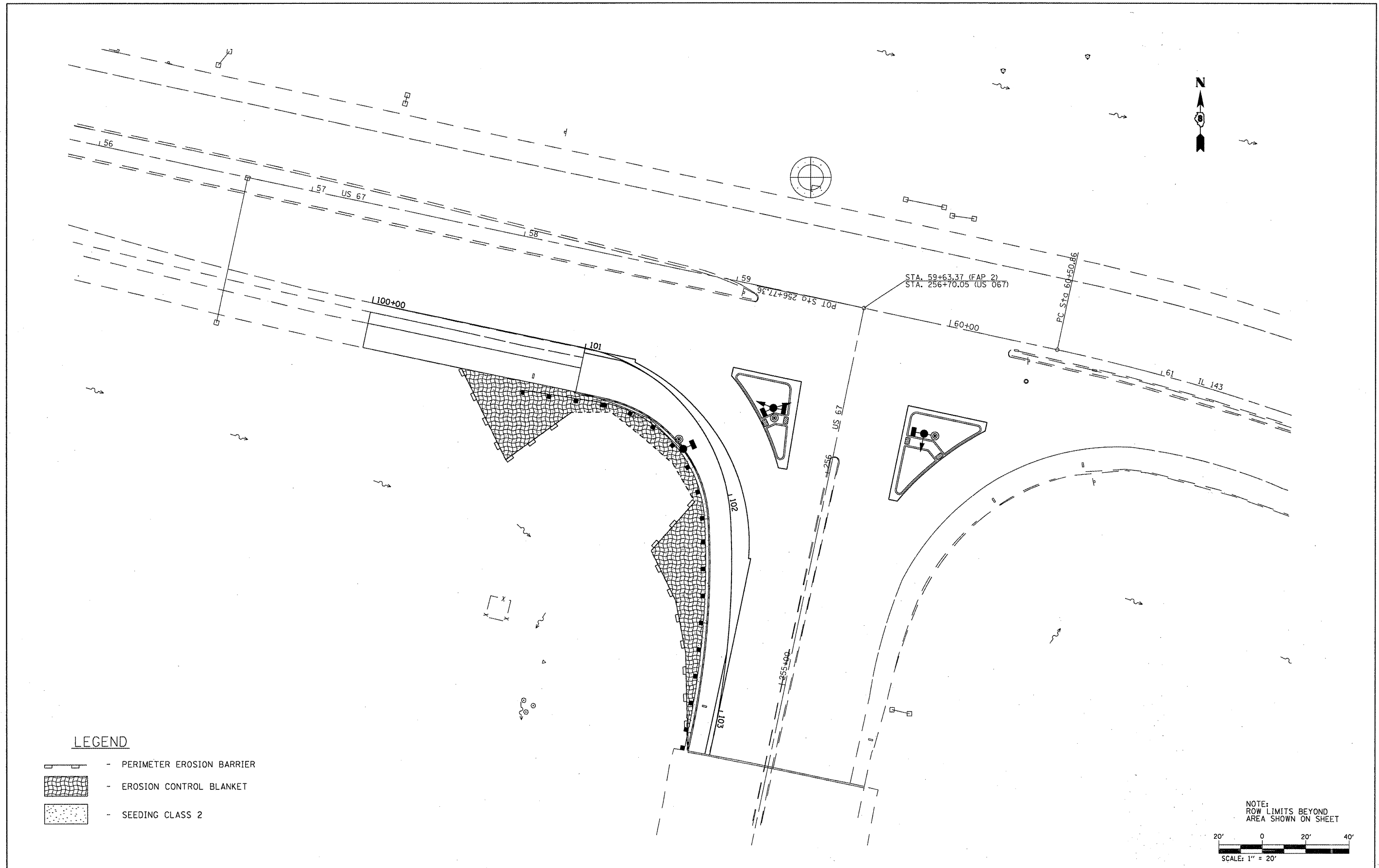
FILE NAME =	USER NAME = #USER#
#FILE#	

DESIGNED -	REVISED -
DRAWN -	REVISED -
CHECKED -	REVISED -
DATE -	REVISED -

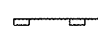

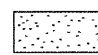
STATE OF ILLINOIS
DEPARTMENT OF TRANSPORTATION

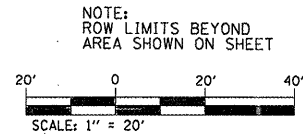
GEOMETRIC LAYOUT	
SCALE: _____	SHEET NO. ___ OF ___ SHEETS
STA. _____ TO STA. _____	

F.A.P. RTE.	SECTION	COUNTY	TOTAL SHEETS	SHEET NO.
304/2	4061-2	MADISON	19	9
CONTRACT NO. 76E60				
ILLINOIS FED. AID PROJECT				



LEGEND

-  - PERIMETER EROSION BARRIER
-  - EROSION CONTROL BLANKET
-  - SEEDING CLASS 2



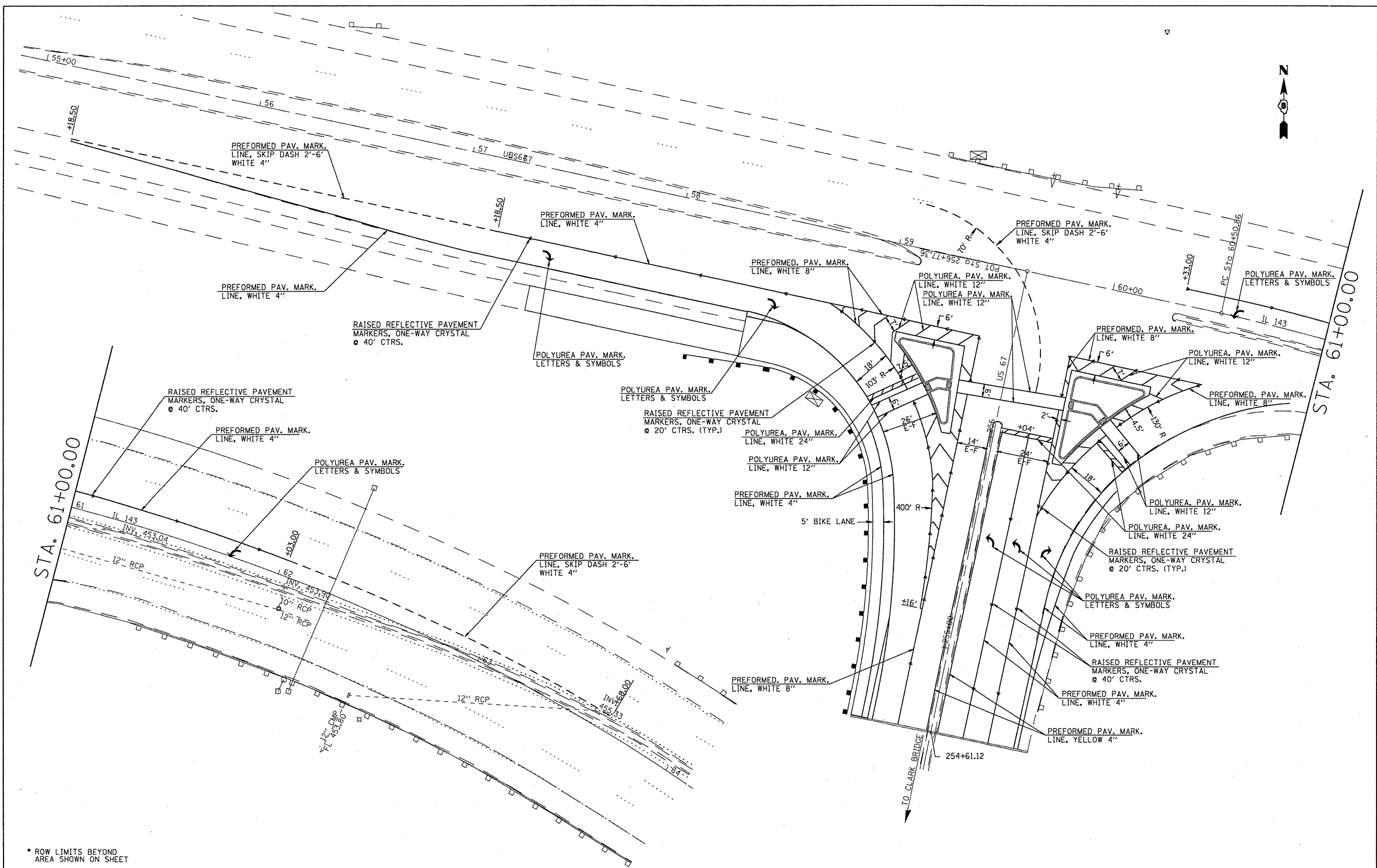
FILE NAME = #FILE#	USER NAME = #USER#	DESIGNED -	REVISED -
	PLOT SCALE = #SCALE#	CHECKED -	REVISED -
	PLOT DATE = #DATE#	DATE -	REVISED -

**STATE OF ILLINOIS
DEPARTMENT OF TRANSPORTATION**

EROSION CONTROL

SCALE: _____ SHEET NO. ___ OF ___ SHEETS STA. _____ TO STA. _____

P.A.P. RTE.	SECTION	COUNTY	TOTAL SHEETS	SHEET NO.
304/2	4061-2	MADISON	19	10
CONTRACT NO. 76E60				
ILLINOIS FED. AID PROJECT				



* ROW LIMITS BEYOND AREA SHOWN ON SHEET

FILE NAME =	USER NAME = #USER#	DESIGNED -	REVISED -
#FILE#		DRAWN -	REVISED -
	PLOT SCALE = #SCALE#	CHECKED -	REVISED -
	PLOT DATE = #DATE#	DATE -	REVISED -

**STATE OF ILLINOIS
DEPARTMENT OF TRANSPORTATION**

PAVEMENT MARKING SHEET

SCALE: _____ SHEET NO. ____ OF ____ SHEETS STA. _____ TO STA. _____

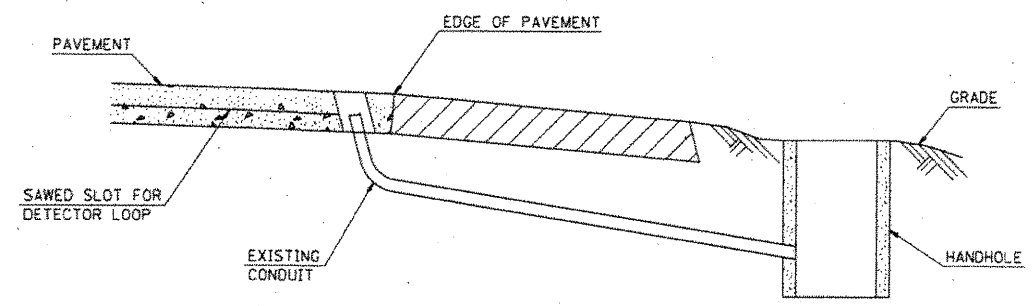
F.A.P. RFE.	SECTION	COUNTY	TOTAL SHEETS	SHEET NO.
304/2	4061-2	MADISON	19	11
ILLINOIS FED. AID PROJECT			CONTRACT NO. 76E60	

TRAFFIC SIGNAL SCHEDULE OF QUANTITIES				
CODE NO	ITEM	UNIT	TOTAL QUANTITIES	CONSTRUCTION TYPE CODE 0021
80300100	LOCATING UNDERGROUND CABLE	FOOT	100	100
81012300	CONDUIT IN TRENCH, 1" DIA., PVC	FOOT	40	40
81021320	CONDUIT PUSHED, 1 1/2" DIA., PVC	FOOT	45	45
83600300	LIGHT POLE FOUNDATION, 30" DIAMETER	FOOT	7	7
84200804	REMOVAL OF POLE FOUNDATION	EACH	1	1
87300815	ELECTRIC CABLE IN TRENCH, SERVICE, NO. 6 3 C	FOOT	500	500
87301225	ELECTRIC CABLE IN CONDUIT, SIGNAL NO. 14 3C	FOOT	550	550
87301245	ELECTRIC CABLE IN CONDUIT, SIGNAL NO. 14 5C	FOOT	210	210
87301255	ELECTRIC CABLE IN CONDUIT, SIGNAL NO. 14 7C	FOOT	145	145
87502680	TRAFFIC SIGNAL POST, ALUMINUM 14 FT.	EACH	3	3
87800100	CONCRETE FOUNDATION, TYPE A	FOOT	3.5	3.5
87900200	DRILL EXISTING HANDHOLE	EACH	1	1
88040070	SIGNAL HEAD, POLYCARBONATE, LED, 1-FACE, 3-SECTION, BRACKET MOUNTED	EACH	2	2
88040150	SIGNAL HEAD, POLYCARBONATE, LED, 1-FACE, 5-SECTION, BRACKET MOUNTED	EACH	2	2
88102710	PEDESTRIAN SIGNAL HEAD, LED, 1-FACE, BRACKET MOUNTED	EACH	4	4
88600600	DETECTOR LOOP REPLACEMENT	FOOT	1170	1170
88800100	PEDESTRIAN PUSH-BUTTON	EACH	3	3
89502200	MODIFY EXISTING CONTROLLER	EACH	1	1
89502210	MODIFY EXISTING CONTROLLER CABINET	EACH	1	1
89502350	REMOVE AND REINSTALL ELECTRIC CABLE FROM CONDUIT	FOOT	2680	2680
89502375	REMOVE EXISTING TRAFFIC SIGNAL EQUIPMENT	EACH	1	1
89502378	REBUILD EXISTING HANDHOLE TO HEAVY-DUTY HANDHOLE	EACH	1	1
X8440116	RELOCATE EXISTING LIGHTING UNIT, SPECIAL	EACH	1	1

TRAFFIC SIGNALS LEGEND

- PVCC POLYVINYL CHLORIDE CONDUIT
- EXISTING SIGNAL HEAD
- EXISTING TRAFFIC SIGNAL MAST ARM
- EXISTING HANDHOLE
- EXISTING DOUBLE HANDHOLE
- EXISTING DETECTOR LOOP
- EXISTING CONTROLLER
- EXISTING SERVICE INSTALLATION
- OR
- EXISTING SIGNAL HEAD, PEDESTRIAN
- EXISTING PEDESTRIAN PUSHBUTTON DETECTOR
- PROPOSED DETECTOR LOOP
- PROPOSED CONDUIT: "T" TRENCH, "P" PUSH, SIZE SPECIFIED
- PROPOSED REBUILD HEAVY-DUTY HANDHOLE
- PROPOSED SIGNAL
- PROPOSED PEDESTRIAN PUSHBUTTON DETECTOR
- PROPOSED SIGNAL HEAD, PEDESTRIAN

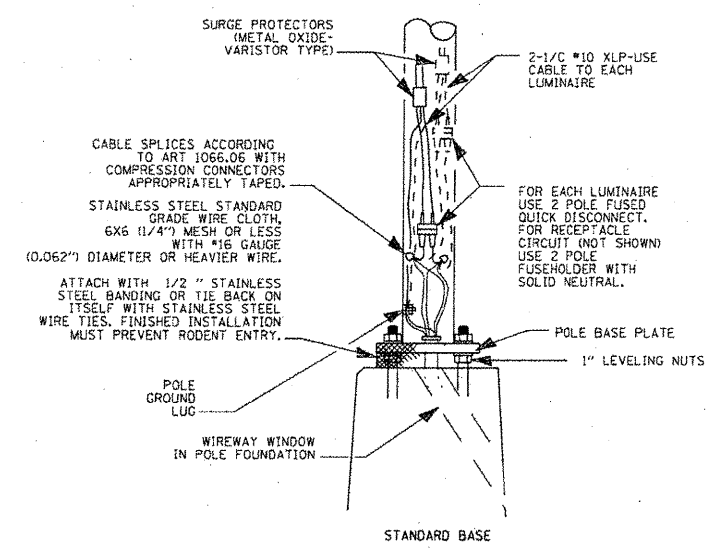
STANDARDS
 814001-01 836001-01 878001-08
 880006-01 886001-01 886006-01



DETAIL E
(NO SCALE)
RE-USE EXISTING DETECTOR LOOP LEAD-IN CONDUIT

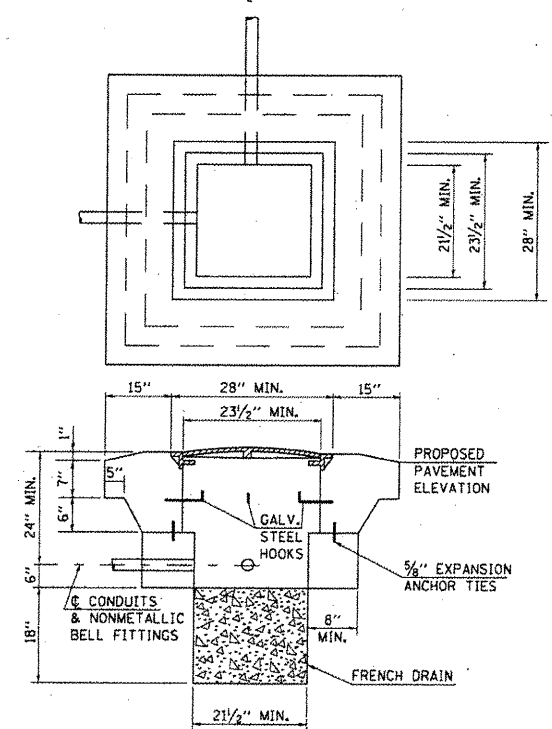
- DRILL OUT PAVEMENT SEALANT AND CLEAN EXISTING CONDUIT.
- REMOVE EXISTING CABLE TO HANDHOLE.
- INSTALL LOOP LEAD-IN CONDUCTORS IN CONDUIT.
- SPLICE NEW DETECTOR LOOP LEAD-IN CONDUCTORS TO EXISTING LEAD-IN CABLE IN HANDHOLE.
- FILL HOLE WITH APPROVED SEALER. PREVENT SEALER FROM ENTERING INTO CONDUIT.

NOT A PAY ITEM. THE COST OF THIS WORK SHALL BE INCLUDED IN THE PAY ITEM "DETECTOR LOOP, TYPE I"



WIRING DETAIL
NO SCALE

- GENERAL NOTES**
- ALL TAPED SPLICES SHALL USE 2 LAYERS OF ELECTRICAL TAPE OVER 3 LAYERS OF RUBBER TAPE AS REQUIRED BY THE STANDARD SPECIFICATIONS. COAT THE FINISHED TAPED SPLICE WITH BONDING COMPOUND.
 - ALL CABLE SPLICES SHALL BE TAPED UNLESS ANOTHER METHOD HAS BEEN SPECIFICALLY APPROVED BY THE ENGINEER.
 - FOR EXAMPLE PURPOSES THE POLE IS SHOWN ON AN ANCHOR BASE. IF THE POLE IS REQUIRED TO BE SET ON A BREAKAWAY BASE, CONSULT THE STANDARD SPECIFICATIONS.
 - ALL DIMENSIONS ARE IN MILLIMETERS (INCHES) UNLESS OTHERWISE SHOWN.



DETAIL F
REBUILD TO HEAVY DUTY HANDHOLE
NOTES:

- USE 5/8" Ø EXPANSION ANCHOR TIES AT 6" CENTERS. COST OF MATERIAL AND LABOR WILL BE INCIDENTAL TO REBUILD HEAVY DUTY HANDHOLE.
- CANNOT EXCAVATE BELOW TOP OF EXISTING CONDUIT UNLESS OTHERWISE SPECIFIED TO BE REMOVED.
- THE CONTRACTOR SHALL BE RESPONSIBLE FOR ANY DAMAGE THAT MAY OCCUR TO EXISTING CABLES.
- THE MINIMUM WEIGHT OF THE FRAME AND COVER SHALL BE 260 LBS.
- THIS DETAIL IS TO BE USED IN CONJUNCTION WITH STANDARD 814001, GENERAL NOTES AND THE SPECIAL PROVISION REBUILD EXISTING HANDHOLE TO HEAVY DUTY HANDHOLE

TRAFFIC SIGNAL GENERAL NOTES

- ALL VEHICLE AND PEDESTRIAN SIGNAL HEADS SHALL HAVE 12" SECTIONS. MOUNTING HARDWARE SHALL BE UNPAINTED ALUMINUM. ALL BOLTS, SCREWS, NUTS AND WASHERS SHALL BE STAINLESS STEEL. ANTI-SEIZE PASTE COMPOUND SHALL BE USED ON ALL MOUNTING HARDWARE FIELD CONNECTIONS.
- THE LOCATION OF TRAFFIC SIGNAL POSTS SHALL BE APPROVED BY THE ENGINEER BEFORE FOUNDATIONS ARE CONSTRUCTED.
- ALL TRAFFIC SIGNAL CABLES SHALL BE #14 AWG STRANDED COPPER UNLESS OTHERWISE SPECIFIED. TERMINAL ENDS SHALL HAVE CRIMPED-ON RING TONGUE CONNECTORS.
- THE LOCATION OF ALL DETECTOR LOOPS SHALL BE APPROVED BY THE ENGINEER BEFORE ANY SLOTS ARE SAWED IN THE PAVEMENT.
- DETECTOR LOOP LEAD-IN SPLICES SHALL BE MADE IN A HANDHOLE PER SECTION 873 OF THE STANDARD SPECIFICATIONS. CONDUCTORS SHALL BE SPLICED IN A RIGID MOLD FILLED WITH NON-HARDENING EPOXY FILLER. ROSIN-CORE SOLDER SHALL BE USED.

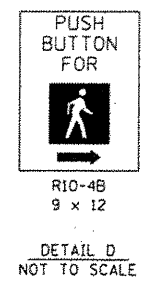
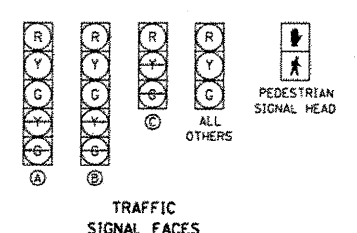
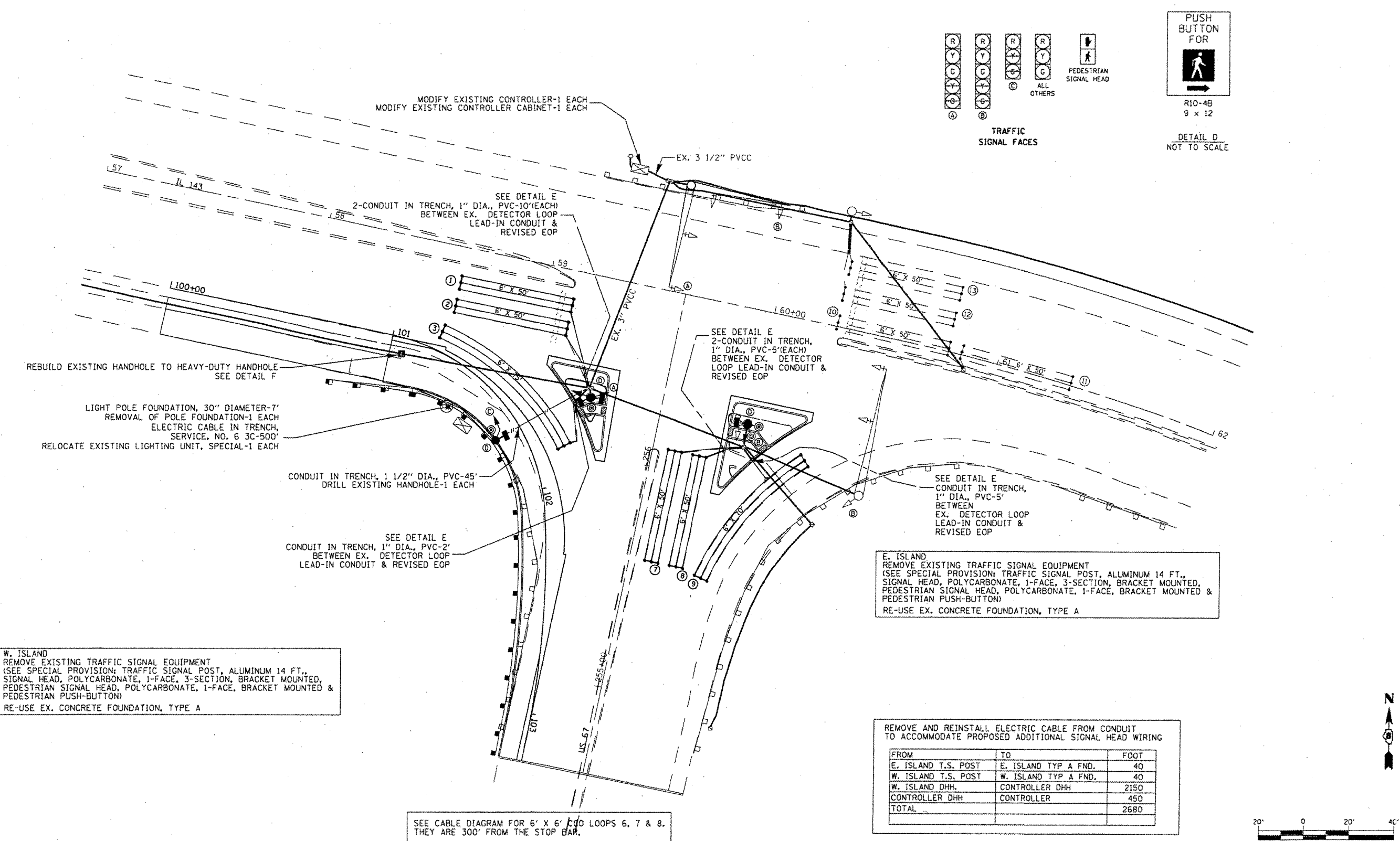
FILE NAME =	USER NAME = #USER#	DESIGNED -	REVISED -
#FILE#		DRAWN -	REVISED -
	PLOT SCALE = #SCALE#	CHECKED -	REVISED -
	PLOT DATE = #DATE#	DATE -	REVISED -

STATE OF ILLINOIS
DEPARTMENT OF TRANSPORTATION

ELECTRICAL SHEET
(TRAFFIC SIGNAL SUMMARY OF QUANTITY, LEGEND, GENERAL NOTES & DETAILS)

F.A.P. RTE.	SECTION	COUNTY	TOTAL SHEETS	SHEET NO.
304/2	4061-2	MADISON	19	12
CONTRACT NO. 76660			FED. ROAD DIST. NO. ILLINOIS FED. AID PROJECT	

SCALE: SHEET NO. OF SHEETS STA. TO STA.



REBUILD EXISTING HANDHOLE TO HEAVY-DUTY HANDHOLE
SEE DETAIL F

LIGHT POLE FOUNDATION, 30" DIAMETER-7'
REMOVAL OF POLE FOUNDATION-1 EACH
ELECTRIC CABLE IN TRENCH,
SERVICE, NO. 6 3C-500'
RELOCATE EXISTING LIGHTING UNIT, SPECIAL-1 EACH

CONDUIT IN TRENCH, 1 1/2" DIA., PVC-45'
DRILL EXISTING HANDHOLE-1 EACH

SEE DETAIL E
CONDUIT IN TRENCH, 1" DIA., PVC-2'
BETWEEN EX. DETECTOR LOOP
LEAD-IN CONDUIT & REVISED EOP

MODIFY EXISTING CONTROLLER-1 EACH
MODIFY EXISTING CONTROLLER CABINET-1 EACH

SEE DETAIL E
2-CONDUIT IN TRENCH, 1" DIA., PVC-10'(EACH)
BETWEEN EX. DETECTOR LOOP
LEAD-IN CONDUIT & REVISED EOP

SEE DETAIL E
2-CONDUIT IN TRENCH,
1" DIA., PVC-5'(EACH)
BETWEEN EX. DETECTOR
LOOP LEAD-IN CONDUIT &
REVISED EOP

SEE DETAIL E
CONDUIT IN TRENCH,
1" DIA., PVC-5'
BETWEEN
EX. DETECTOR LOOP
LEAD-IN CONDUIT &
REVISED EOP

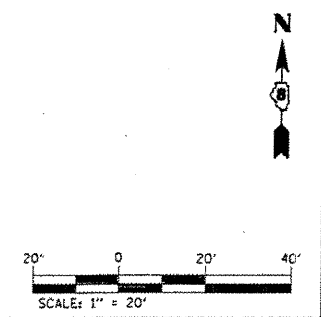
W. ISLAND
REMOVE EXISTING TRAFFIC SIGNAL EQUIPMENT
(SEE SPECIAL PROVISION: TRAFFIC SIGNAL POST, ALUMINUM 14 FT.,
SIGNAL HEAD, POLYCARBONATE, 1-FACE, 3-SECTION, BRACKET MOUNTED,
PEDESTRIAN SIGNAL HEAD, POLYCARBONATE, 1-FACE, BRACKET MOUNTED &
PEDESTRIAN PUSH-BUTTON)
RE-USE EX. CONCRETE FOUNDATION, TYPE A

E. ISLAND
REMOVE EXISTING TRAFFIC SIGNAL EQUIPMENT
(SEE SPECIAL PROVISION: TRAFFIC SIGNAL POST, ALUMINUM 14 FT.,
SIGNAL HEAD, POLYCARBONATE, 1-FACE, 3-SECTION, BRACKET MOUNTED,
PEDESTRIAN SIGNAL HEAD, POLYCARBONATE, 1-FACE, BRACKET MOUNTED &
PEDESTRIAN PUSH-BUTTON)
RE-USE EX. CONCRETE FOUNDATION, TYPE A

REMOVE AND REINSTALL ELECTRIC CABLE FROM CONDUIT
TO ACCOMMODATE PROPOSED ADDITIONAL SIGNAL HEAD WIRING

FROM	TO	FOOT
E. ISLAND T.S. POST	E. ISLAND TYP A FND.	40
W. ISLAND T.S. POST	W. ISLAND TYP A FND.	40
W. ISLAND DHH.	CONTROLLER DHH	2150
CONTROLLER DHH	CONTROLLER	450
TOTAL		2680

SEE CABLE DIAGRAM FOR 6' X 6' CDD LOOPS 6, 7 & 8.
THEY ARE 300' FROM THE STOP BAR.



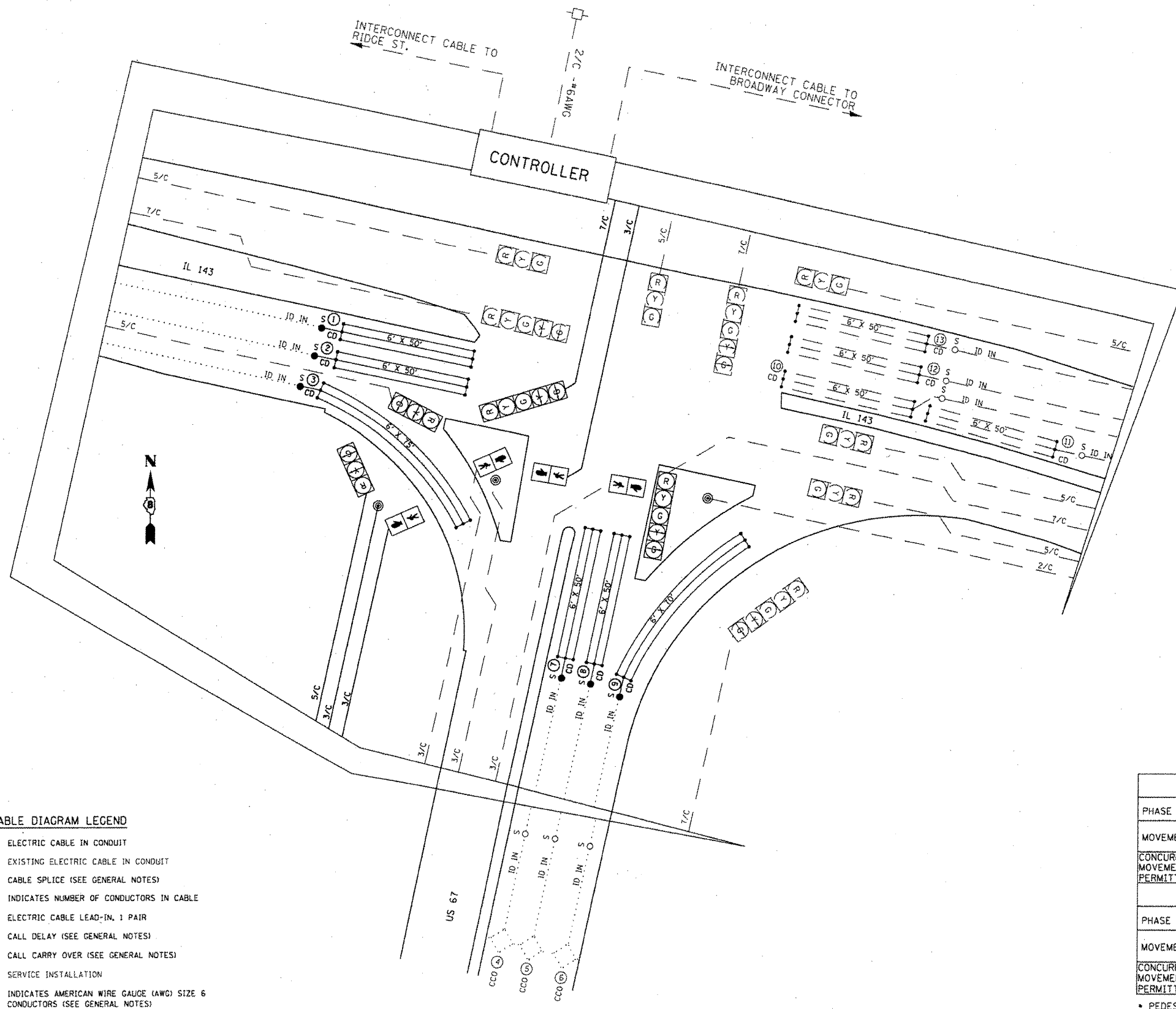
FILE NAME =	USER NAME = #USER#	DESIGNED -	REVISED -
#FILE#		DRAWN -	REVISED -
		CHECKED -	REVISED -
		DATE -	REVISED -

STATE OF ILLINOIS
DEPARTMENT OF TRANSPORTATION

ELECTRICAL SHEET
(LIGHTING AND TRAFFIC SIGNAL PLAN)

SCALE: _____ SHEET NO. _____ OF _____ SHEETS STA. _____ TO STA. _____

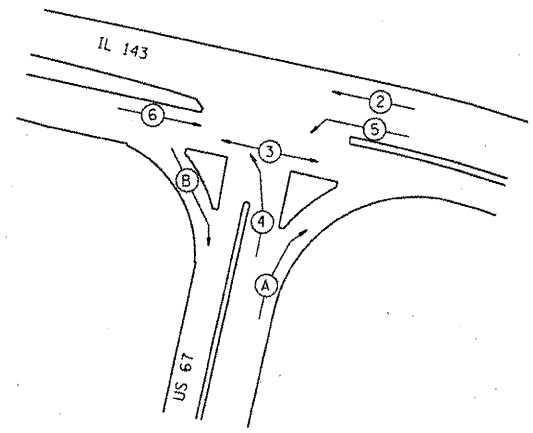
F.A.P. RTE.	SECTION	COUNTY	TOTAL SHEETS	SHEET NO.
304/2	4061-2	MADISON	19	13
CONTRACT NO. 76E60			FED. ROAD DIST. NO. ILLINOIS FED. AID PROJECT	



DETECTOR LOOP REQUIREMENTS AND CALCULATIONS
FOR US 67 AND IL 143

LOOP	PHASE (B)	LOOP SIZE (FT)	REQUIRED # OF TURNS	CALCULATED INDUCTANCE MICROHENRIES (μH)	CALCULATED RESISTANCE OHMS (R)
1.EB THRU CD A	6	6' X 50'-0"	3-6-3	826.0	2.5
2.EB THRU CD B	6	6' X 50'-0"	3-6-3	822.7	2.4
3.EB RT CD	O.L.B	6' X 75'-0"	3-6-3	1198.8	3.2
4.NB CCO A	4	6' X 6'	NA	NA	NA
5.NB CCO B	4	6' X 6'	NA	NA	NA
6.NB CCO C	4	6' X 6'	NA	NA	NA
7.NB LT CD A	4	6' X 50'-0"	3-6-3	839.6	3.8
8.NB LT CD B	4	6' X 50'-0"	3-6-3	837.4	2.8
9.NB RT CD	O.L.A	6' X 70'-0"	3-6-3	1140.7	3.4
10.WB THRU CD A	2	6' X 50'-0"	NA	NA	NA
11.WB THRU CD B	2	6' X 50'-0"	NA	NA	NA
12.WB LT CD A	5	6' X 50'-0"	NA	NA	NA
13.WB LT CD B	5	6' X 50'-0"	NA	NA	NA

THE ABOVE VALUES ARE CALCULATED OF COMBINED LOOP AND LEAD-IN INDUCTANCE AND RESISTANCE. ACTUAL MEASURED VALUES SHOULD BE WITHIN +/- 20% OF THESE VALUES.



PHASE DESIGNATION
DIAGRAM

- CABLE DIAGRAM LEGEND**
- ELECTRIC CABLE IN CONDUIT
 - - - EXISTING ELECTRIC CABLE IN CONDUIT
 - CABLE SPLICE (SEE GENERAL NOTES)
 - 2/C INDICATES NUMBER OF CONDUCTORS IN CABLE
 - ID IN ELECTRIC CABLE LEAD-IN, 1 PAIR
 - CD CALL DELAY (SEE GENERAL NOTES)
 - CCO CALL CARRY OVER (SEE GENERAL NOTES)
 - SERVICE INSTALLATION
 - *6 INDICATES AMERICAN WIRE GAUGE (AWG) SIZE 6 CONDUCTORS (SEE GENERAL NOTES)

EXISTING SEQUENCE OF OPERATION										
PHASE	1	2	3	4	5	6	7	8	OVERLAP A	OVERLAP B
MOVEMENT	NOT	WB	NOT	NB	WB LT	EB	NOT	NOT	NB RT	NOT
CONCURRENT MOVEMENT PERMITTED	USED	5 OR 6	USED	O.L.A	2	2	USED	USED	4 + 5	USED

PROPOSED SEQUENCE OF OPERATION										
PHASE	1	2	3	4	5	6	7	8	OVERLAP A	OVERLAP B
MOVEMENT	NOT	WB	WB	NB	WB LT	EB	NOT	NOT	NB RT	EB RT
CONCURRENT MOVEMENT PERMITTED	USED	5 OR 6	ONLY	O.L.A	2	2	USED	USED	4 + 5	2 + 4 + 5 + 6

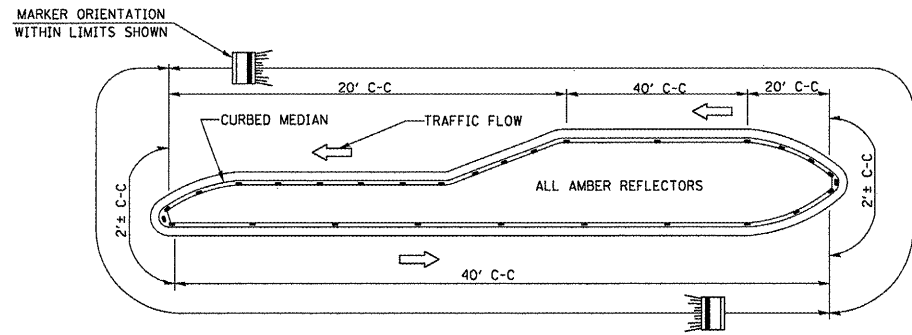
• PEDESTRIAN MOVEMENT ON ACTUATION ONLY
O.L.=OVERLAP

FILE NAME =	USER NAME = #USER#	DESIGNED -	REVISED -
#FILE#		DRAWN -	REVISED -
	PLOT SCALE = #SCALE#	CHECKED -	REVISED -
	PLOT DATE = #DATE#	DATE -	REVISED -

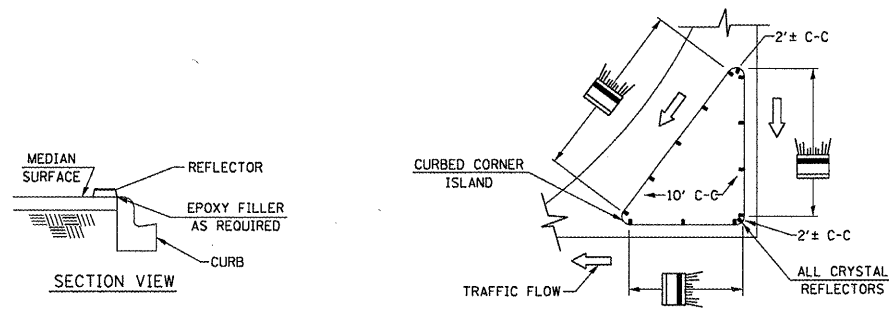
**STATE OF ILLINOIS
DEPARTMENT OF TRANSPORTATION**

**ELECTRICAL SHEET
(CABLE DIAGRAM)**

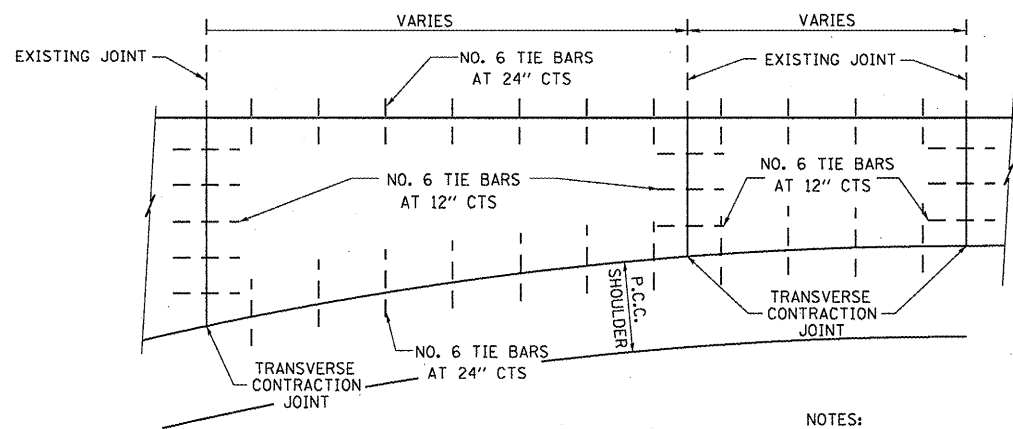
SCALE: _____	SHEET NO. _____ OF _____ SHEETS	STA. _____ TO STA. _____	F.A.P. RTE. 304/2	SECTION 4061-2	COUNTY MADISON	TOTAL SHEETS 19	SHEET NO. 14
			CONTRACT NO. 76660				
			FED. ROAD DIST. NO. ILLINOIS FED. AID PROJECT				



- NOTES
1. PRISMATIC REFLECTORS SHALL BE MONO-DIRECTIONAL AND POSITIONED SO THAT THE REFLECTIVE FACE IS FACING THE APPROACHING TRAFFIC.
 2. PRISMATIC REFLECTORS SHALL BE SECURED IN PLACE WITH AN EPOXY ADHESIVE.
 3. PRISMATIC REFLECTORS SHALL BE EITHER AMBER OR CRYSTAL IN COLOR.

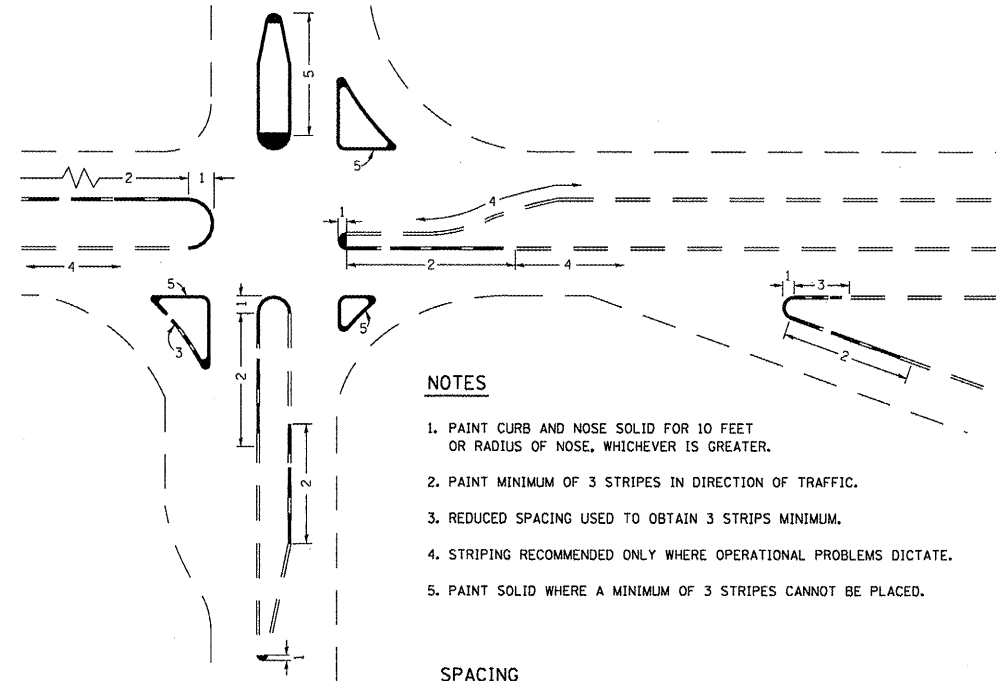


TYPICAL PLACEMENT OF PRISMATIC REFLECTORS ON CURBS
(NO SCALE)

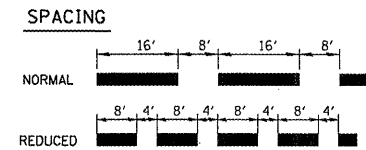


REINFORCEMENT DETAIL
(NO SCALE)

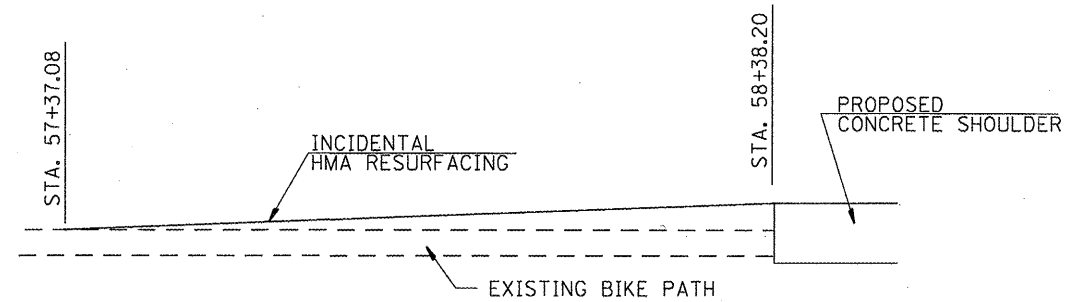
- NOTES:
- ALL REINFORCEMENT IS INCLUDED IN THE P.C.C PAVEMENT AND P.C.C. SHOULDER PAY ITEMS
 - THE INTENT IS FOR THE LOCATION OF THE NEW CONTRACTION JOINTS TO MATCH THE LOCATION OF THE EXISTING CONTRACTION JOINTS



- NOTES
1. PAINT CURB AND NOSE SOLID FOR 10 FEET OR RADIUS OF NOSE, WHICHEVER IS GREATER.
 2. PAINT MINIMUM OF 3 STRIPES IN DIRECTION OF TRAFFIC.
 3. REDUCED SPACING USED TO OBTAIN 3 STRIPS MINIMUM.
 4. STRIPING RECOMMENDED ONLY WHERE OPERATIONAL PROBLEMS DICTATE.
 5. PAINT SOLID WHERE A MINIMUM OF 3 STRIPES CANNOT BE PLACED.



CURB MARKING



BIKE TRAIL
TRANSITION DETAIL

FILE NAME =	USER NAME = #USER#	DESIGNED -	REVISED -
#FILE#		DRAWN -	REVISED -
	PLOT SCALE = #SCALE#	CHECKED -	REVISED -
	PLOT DATE = #DATE#	DATE -	REVISED -

STATE OF ILLINOIS
DEPARTMENT OF TRANSPORTATION

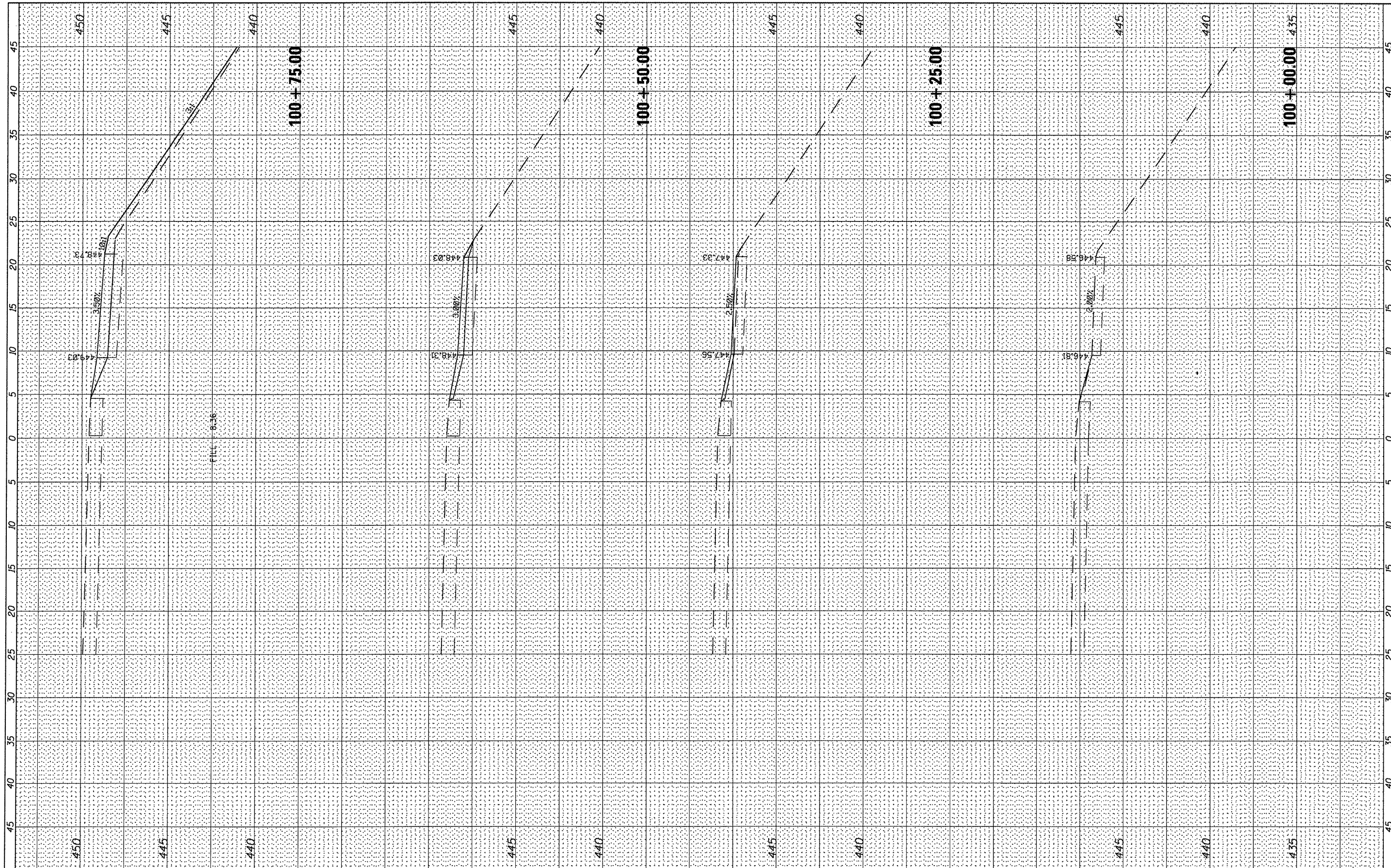
DETAILS

SCALE: _____ SHEET NO. ___ OF ___ SHEETS STA. _____ TO STA. _____

F.A.P. RTE.	SECTION	COUNTY	TOTAL SHEETS	SHEET NO.
304/2	406I-2	MADISON	19	15
FED. ROAD DIST. NO. _____ ILLINOIS FED. AID PROJECT			CONTRACT NO. 76E60	

FINAL SURVEY	DATE
SURVEY	BY
NOTE BOOK	
TEMPLATE	
AREAS CHECKED	
NO.	

ORIGINAL SURVEY	DATE
SURVEY	BY
NOTE BOOK	
TEMPLATE	
AREAS CHECKED	
NO.	



FILE NAME =	USER NAME = #USER#	DESIGNED -	REVISED -
#FILE#		DRAWN -	REVISED -
	PLOT SCALE = #SCALE#	CHECKED -	REVISED -
	PLOT DATE = #DATE#	DATE -	REVISED -

**STATE OF ILLINOIS
DEPARTMENT OF TRANSPORTATION**

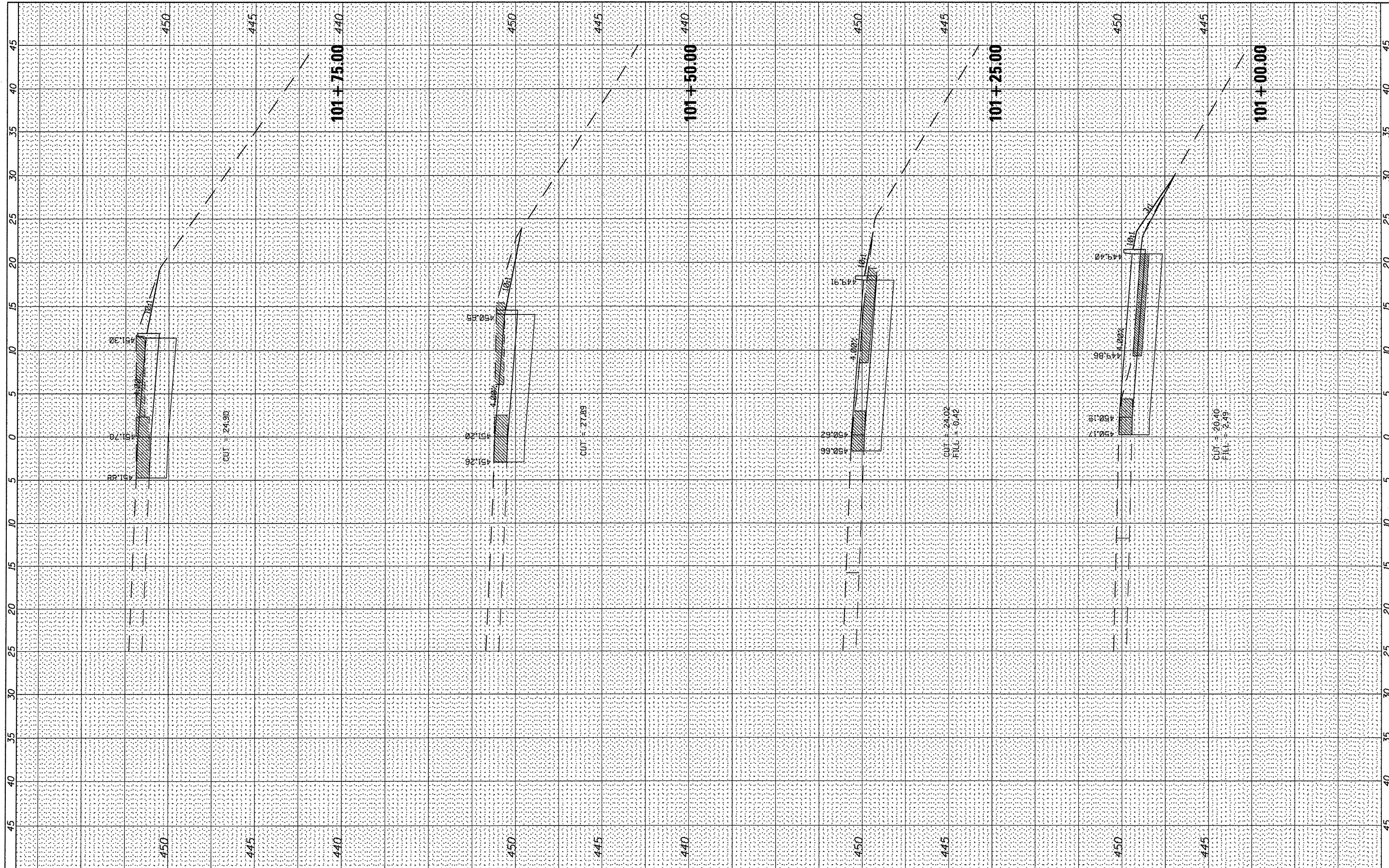
CROSS SECTIONS

SCALE: _____ SHEET NO. ___ OF ___ SHEETS STA. 100+00.00 TO STA. 100+75.00

F.A.P. RTE.	SECTION	COUNTY	TOTAL SHEETS	SHEET NO.
304/2	4061-2	MADISON	19	16
			CONTRACT NO. 76E60	
ILLINOIS FED. AID PROJECT				

FINAL	DATE
SURVEYED	
NOTE BOOK	
NO.	

ORIGINAL	DATE
SURVEYED	
NOTE BOOK	
NO.	



FILE NAME *	USER NAME = #USER*	DESIGNED -	REVISED -
#FILE#		DRAWN -	REVISED -
	PLOT SCALE = #SCALE*	CHECKED -	REVISED -
	PLOT DATE = #DATE*	DATE -	REVISED -

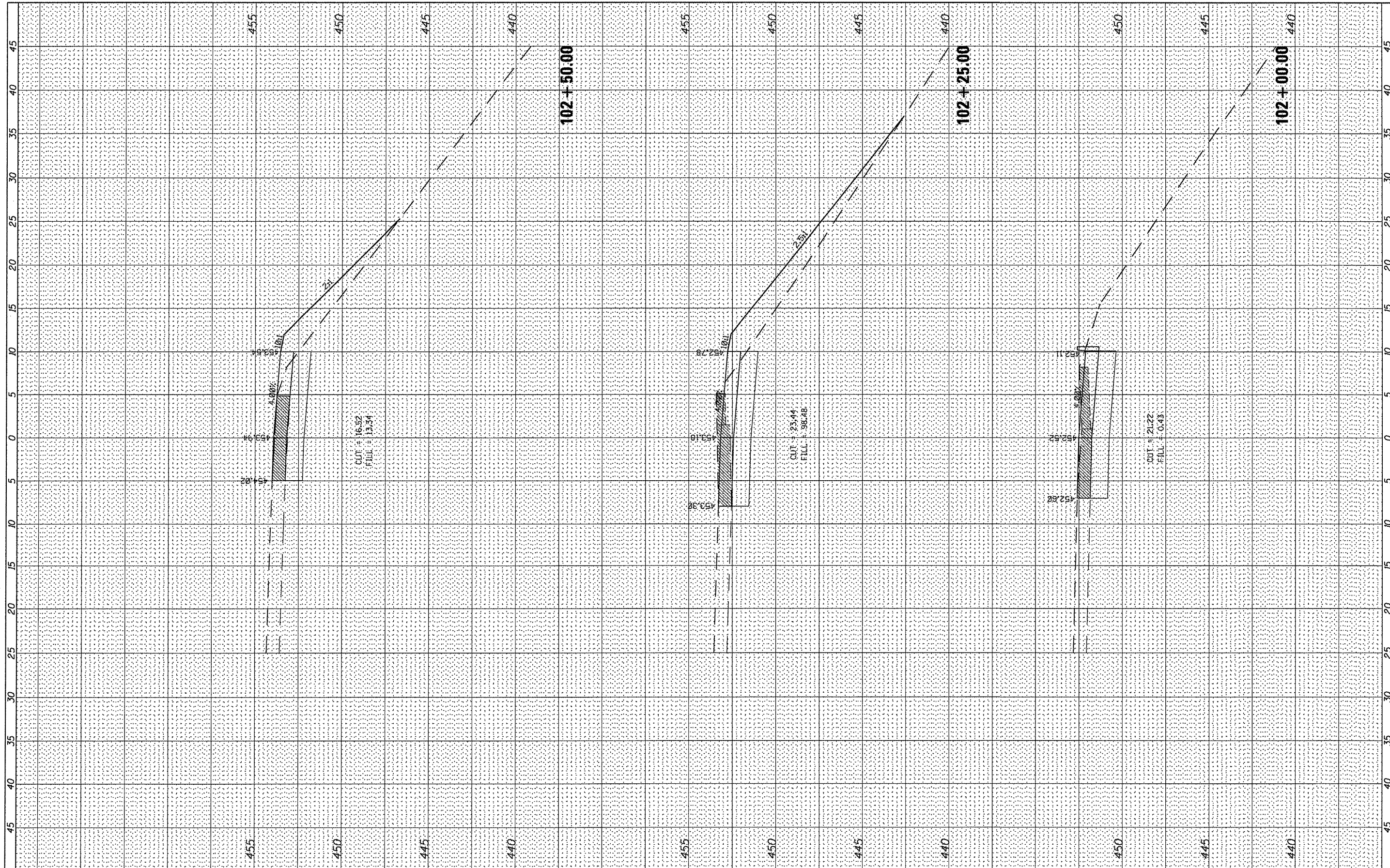
**STATE OF ILLINOIS
DEPARTMENT OF TRANSPORTATION**

CROSS SECTIONS

F.A.P. RTE. 304/2	SECTION 4061-2	COUNTY MADISON	TOTAL SHEETS 19	SHEET NO. 17
SCALE: _____ SHEET NO. ____ OF ____ SHEETS STA. 101+00.00 TO STA. 101+75.00			CONTRACT NO. 76E60	
ILLINOIS FED. AID PROJECT				

DATE	
BY	
FINISHED SURVEY	
TEMPLATE	
NOTE BOOK	
AREAS CHECKED	
NO.	

DATE	
BY	
ORIGINAL SURVEY	
TEMPLATE	
NOTE BOOK	
AREAS CHECKED	
NO.	



FILE NAME =
#FILE#

USER NAME = #USER#	DESIGNED -	REVISED -
PLOT SCALE = #SCALE#	DRAWN -	REVISED -
PLOT DATE = #DATE#	CHECKED -	REVISED -
	DATE -	REVISED -

**STATE OF ILLINOIS
DEPARTMENT OF TRANSPORTATION**

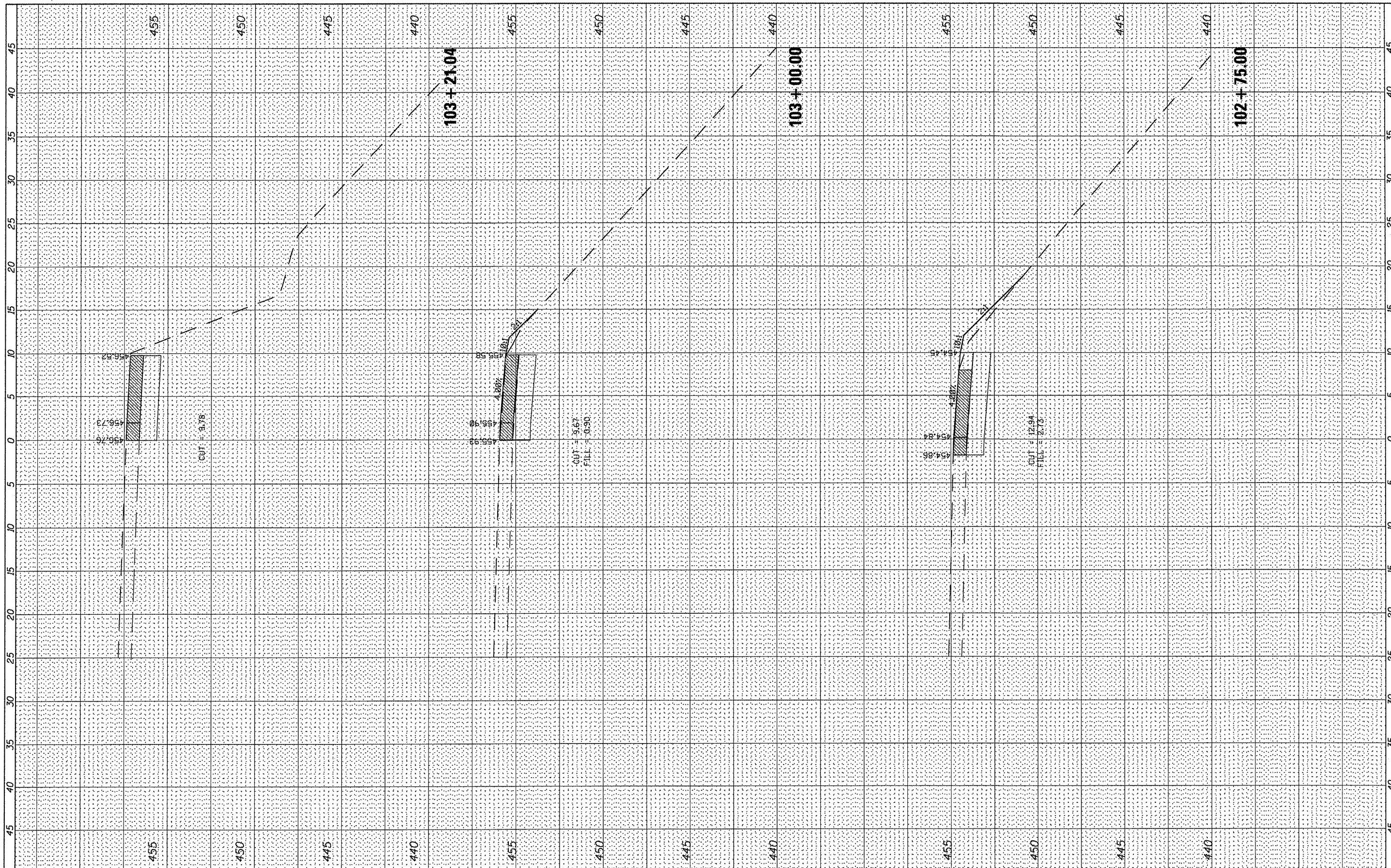
CROSS SECTIONS

SCALE: _____ SHEET NO. ___ OF ___ SHEETS STA. 102+00.00 TO STA. 102+50.00

F.A.P. RTE.	SECTION	COUNTY	TOTAL SHEETS	SHEET NO.
304/2	4061-2	MADISON	19	18
			CONTRACT NO. 76E60	
ILLINOIS FED. AID PROJECT				

DATE	BY
SURVEYED	
PLOTTED	
NOTE BOOK	
AREAS	
CHECKED	
NO.	

DATE	BY
SURVEYED	
PLOTTED	
NOTE BOOK	
AREAS	
CHECKED	
NO.	



FILE NAME =
 *FILE#

USER NAME = *USER#	DESIGNED -	REVISED -
PLOT SCALE = *SCALE#	DRAWN -	REVISED -
PLOT DATE = *DATE#	CHECKED -	REVISED -
	DATE -	REVISED -

**STATE OF ILLINOIS
 DEPARTMENT OF TRANSPORTATION**

CROSS SECTIONS

SCALE: _____ SHEET NO. ___ OF ___ SHEETS STA. 102+75.00 TO STA. 103+00.00

F.A.P. RTE.	SECTION	COUNTY	TOTAL SHEETS	SHEET NO.
304/2	4061-2	MADISON	19	19
			CONTRACT NO. 76E60	
ILLINOIS FED. AID PROJECT				