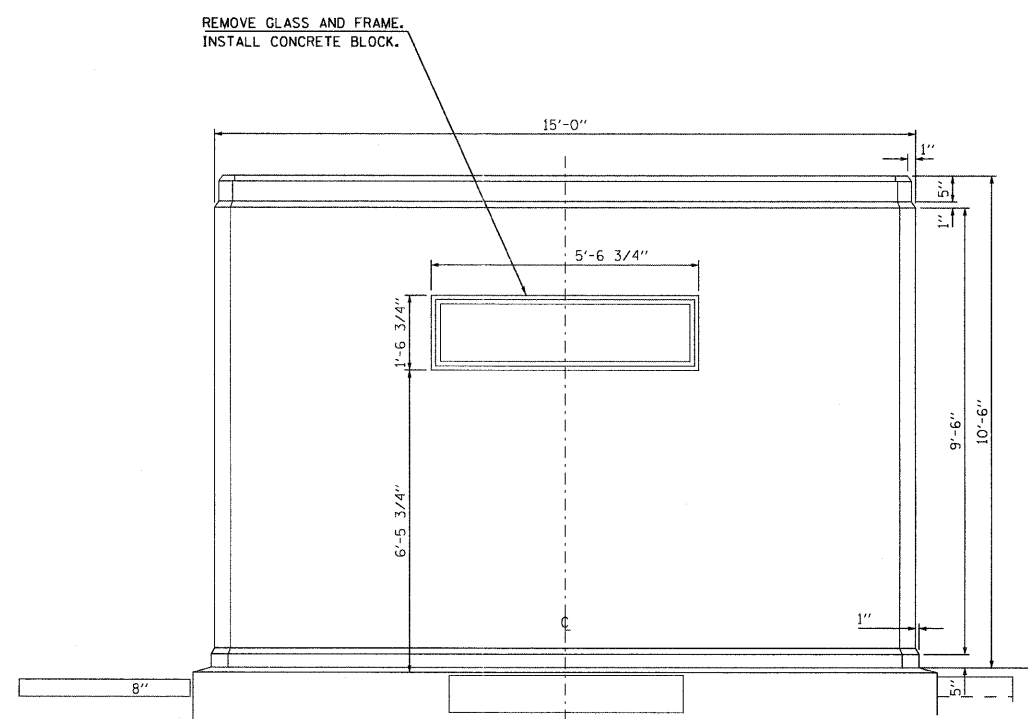


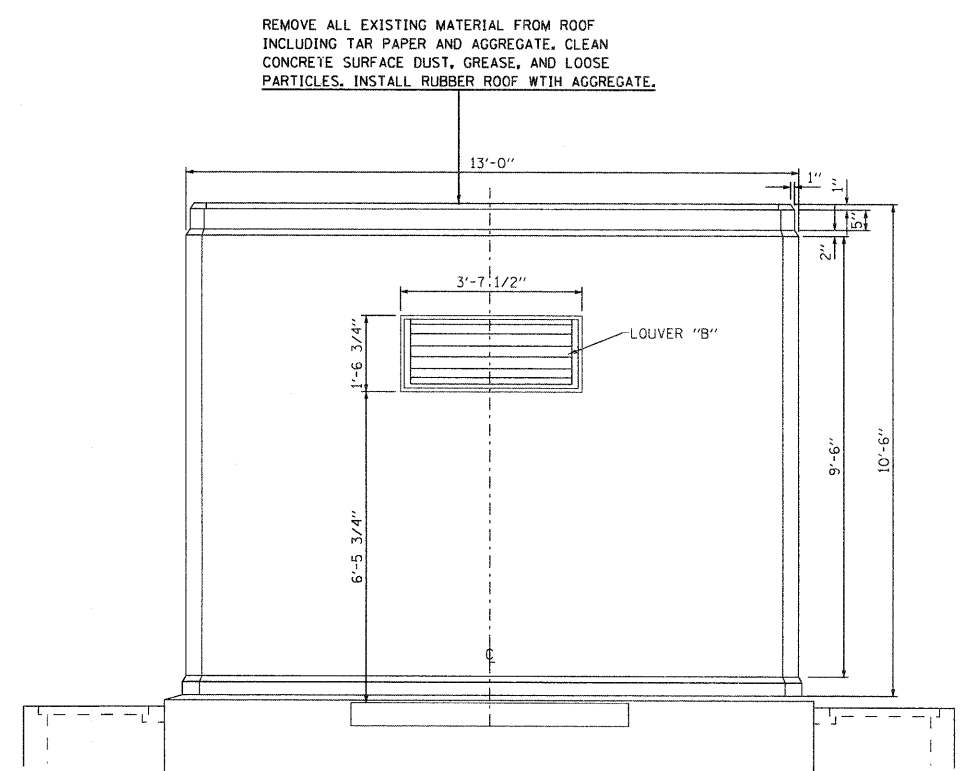
SOUTH ELEVATION

REMOVE AND REPLACE DOOR, FRAME, AND VENT. PROPOSED DOOR TO INCLUDE LOCKABLE PAD LOCK HASP.



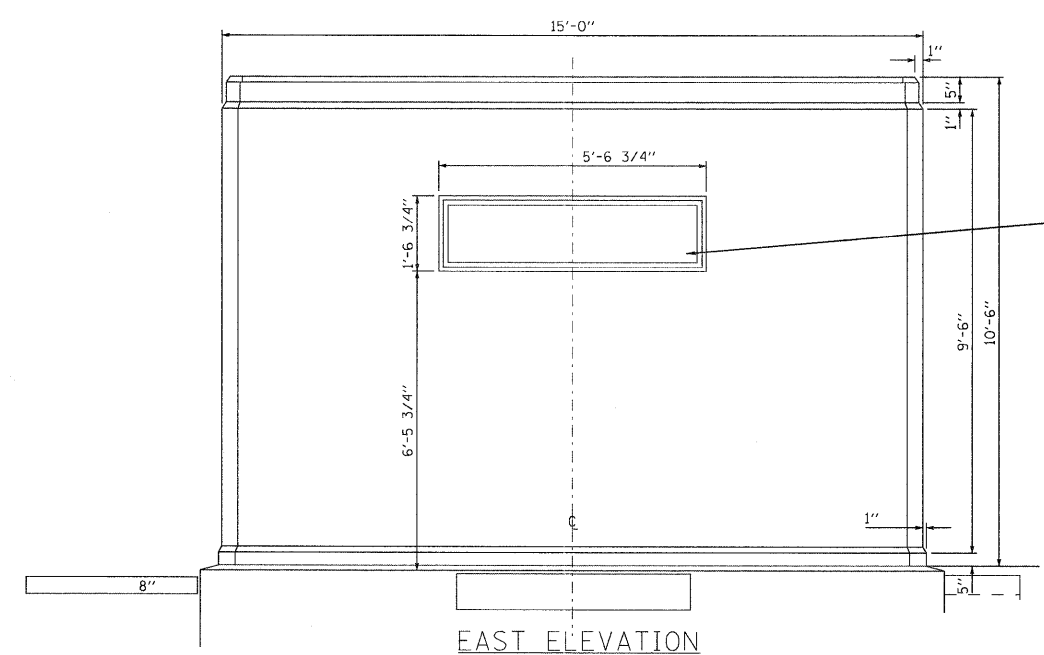
WEST ELEVATION

REMOVE GLASS AND FRAME. INSTALL CONCRETE BLOCK.



NORTH ELEVATION

REMOVE ALL EXISTING MATERIAL FROM ROOF INCLUDING TAR PAPER AND AGGREGATE. CLEAN CONCRETE SURFACE DUST, GREASE, AND LOOSE PARTICLES. INSTALL RUBBER ROOF WITH AGGREGATE.



EAST ELEVATION

REMOVE GLASS AND FRAME. INSTALL PROPOSED EXHAUST. USE CONCRETE BLOCK TO FILL REMAINING SPACE.

|  |                             |            |           |   |   |  |  |  |   |         |        |              |           |
|--|-----------------------------|------------|-----------|---|---|--|--|--|---|---------|--------|--------------|-----------|
| FILE NAME =  | USER NAME = alfordb         | DESIGNED - | REVISED - | <b>STATE OF ILLINOIS<br/>DEPARTMENT OF TRANSPORTATION</b> | <b>GENERAL PUMP STATION WORK</b>        |  |  |  | F.A.P. RTE.                                   | SECTION | COUNTY | TOTAL SHEETS | SHEET NO. |
| cr:\pw_work\pwidot\alfordb\247386\4876671-sht-plen.dgn | PLOT SCALE = 50.0000' / IN. | DRAWN -    | REVISED - |   |   |  |  |  | 805   | 8Z-T-1  | MARION | 12           | 6         |
| PLOT DATE = 3/29/2011                                  | DATE -                      | CHECKED -  | REVISED - |   | SCALE: SHEET NO. OF SHEETS STA. TO STA. |  |  |  | CONTRACT NO. 76E71                            |         |        |              |           |
|  |                             |            |           |   |   |  |  |  | FED. ROAD DIST. NO. ILLINOIS FED. AID PROJECT |         |        |              |           |