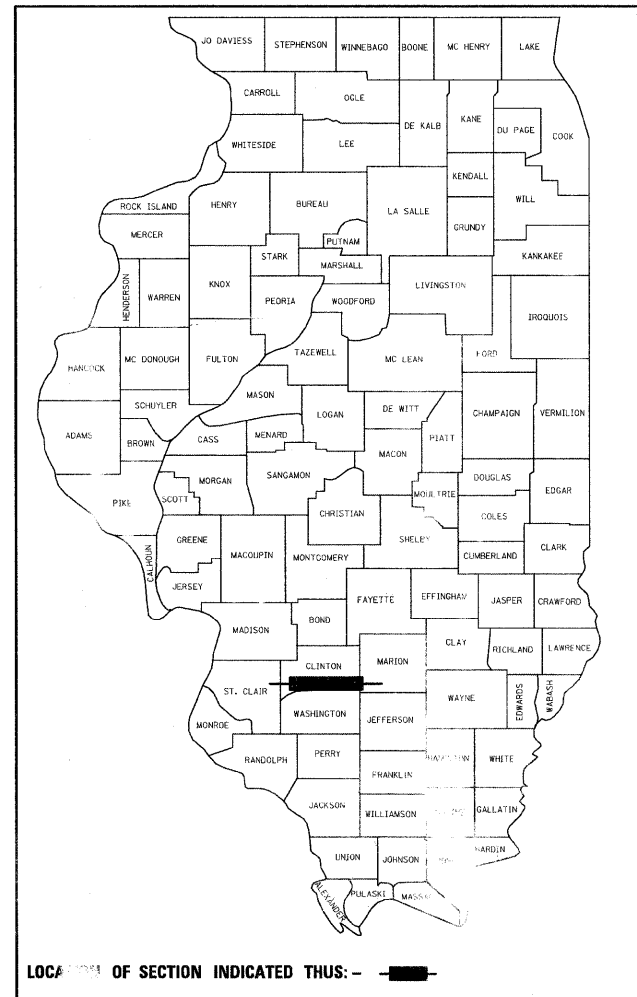


F.A.P. / F.A.S. RTE.	SECTION	COUNTY	TOTAL SHEETS	SHEET NO.
805 / 795	D8 GUARDRAIL UPDATE 2011	VARIOUS	37	1
		ILLINOIS	CONTRACT NO. 76E78	

STATE OF ILLINOIS  
DEPARTMENT OF TRANSPORTATION  
DIVISION OF HIGHWAYS

D-98-038-11



PROPOSED  
HIGHWAY PLANS

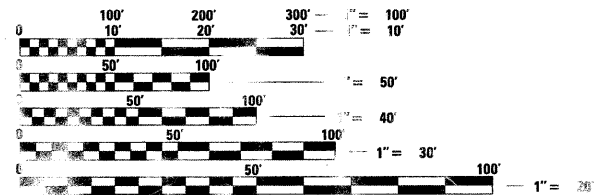
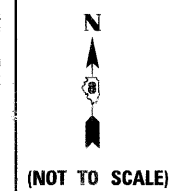
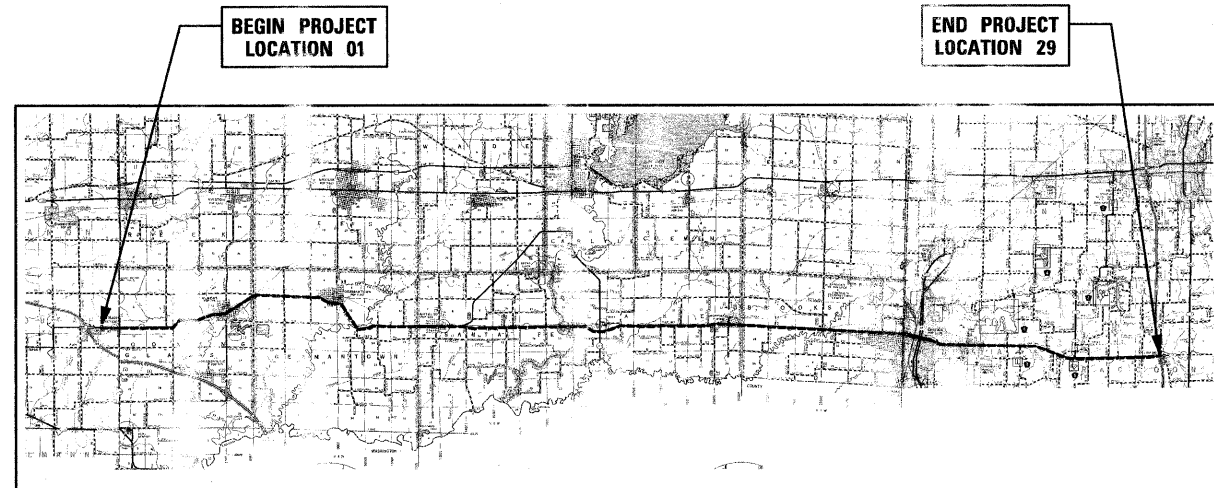
ROUTE: FAP 805 (IL 161)  
SECTION: D8 GUARDRAIL UPDATE 2011  
PROJECT: HSIP-0805(074)  
TYPE OF IMPROVEMENT: GUARDRAIL UPGRADE  
VARIOUS COUNTIES

C-98-039-11

FOR INDEX OF SHEETS, SEE SHEET NO. 2



*Bradley G. Hummert* 3/19/2011  
BRADLEY G. HUMMERT  
REGISTERED PROFESSIONAL ENGINEER IN ILLINOIS  
NO. 50918 EXPIRES NOV. 30, 2011



SIZE PLANS HAVE BEEN PREPARED USING STANDARD ENGINEERING SCALES. REDUCED SIZED PLANS WILL NOT CONFORM TO STANDARD SCALES. IN MAKING MEASUREMENTS ON REDUCED PLANS, THE ABOVE SCALES MAY BE USED.

J.L.I.E.  
JOINT UTILITY LOCATION INFORMATION FOR EXCAVATION  
800-892-0123  
811

LOCATION 01	366 FT. = 0.069 MILE	LOCATION 16A	582 FT. = 0.110 MILE
LOCATION 02	498 FT. = 0.094 MILE	LOCATION 16B	972 FT. = 0.184 MILE
LOCATION 03	603 FT. = 0.114 MILE	LOCATION 17	528 FT. = 0.100 MILE
LOCATION 04	- FT. = - MILE	LOCATION 18	1,317 FT. = 0.249 MILE
LOCATION 05	- FT. = - MILE	LOCATION 19	465 FT. = 0.088 MILE
LOCATION 06	471 FT. = 0.089 MILE	LOCATION 20	517 FT. = 0.098 MILE
LOCATION 07	429 FT. = 0.081 MILE	LOCATION 21	559 FT. = 0.106 MILE
LOCATION 08	247 FT. = 0.047 MILE	LOCATION 22	504 FT. = 0.095 MILE
LOCATION 09	694 FT. = 0.131 MILE	LOCATION 23	667 FT. = 0.126 MILE
LOCATION 10	467 FT. = 0.088 MILE	LOCATION 24	- FT. = - MILE
LOCATION 11	240 FT. = 0.045 MILE	LOCATION 25	767 FT. = 0.145 MILE
LOCATION 12	1,430 FT. = 0.271 MILE	LOCATION 26	339 FT. = 0.064 MILE
LOCATION 13	1,122 FT. = 0.213 MILE	LOCATION 27	- FT. = - MILE
LOCATION 14	1,072 FT. = 0.203 MILE	LOCATION 28	936 FT. = 0.177 MILE
LOCATION 15	566 FT. = 0.107 MILE	LOCATION 29	881 FT. = 0.167 MILE

GROSS LENGTH: 237,600 FT. = 45.000 MILE  
NET LENGTH = 16,993 FT. = 3.218 MILE

REVISED 6-3-11

STATE OF ILLINOIS  
DEPARTMENT OF TRANSPORTATION  
DIVISION OF HIGHWAYS

SUBMITTED *March 24, 2011*  
*My C. Kramer*  
DEPUTY DIRECTOR OF HIGHWAYS, REGION 5 ENGINEER

*May 13, 2011*  
*Scott E. Stitt, P.E.*  
Acting ENGINEER OF DESIGN ENVIRONMENT

*May 13, 2011*  
*Christine M. Reed*  
DIRECTOR OF HIGHWAYS, CHIEF ENGINEER

PRINTED BY THE AUTHORITY  
OF THE STATE OF ILLINOIS

PROJECT ENGINEER: PAULIE LEBEAU, P.E. 618-346-3179  
PROJECT MANAGER: CHERYL KEPLAR, P.E. 618-346-3186

CONTRACT NO 76E78