

F.A.P. / F.A.S. RTE.	SECTION	COUNTY	TOTAL SHEETS	SHEET NO.
805 / 795	D8 GUARDRAIL UPDATE 2011	VARIOUS	37	1
		ILLINOIS	CONTRACT NO. 76E78	

STATE OF ILLINOIS
DEPARTMENT OF TRANSPORTATION
DIVISION OF HIGHWAYS

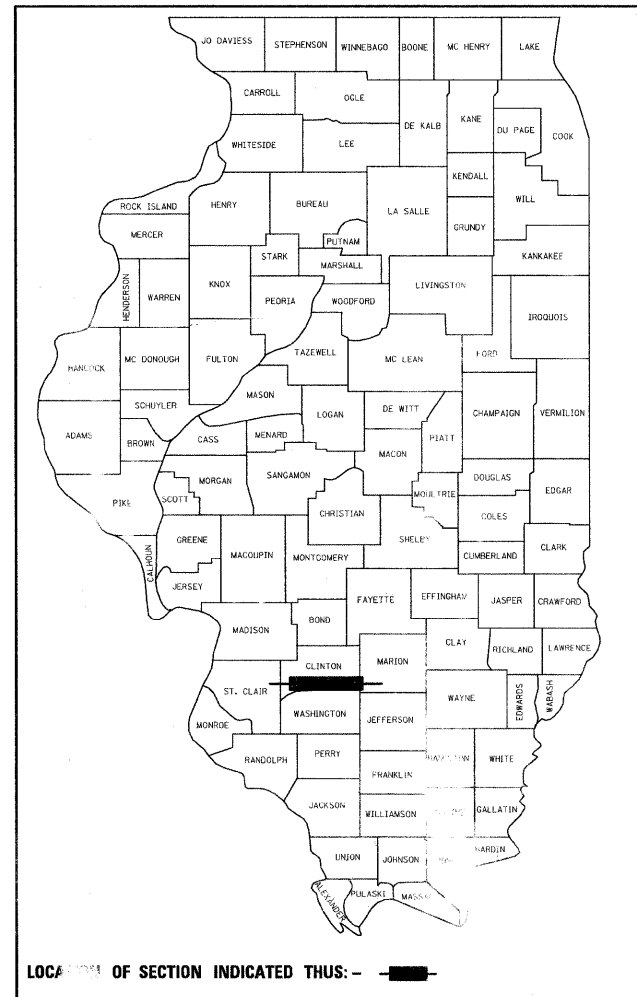
D-98-038-11

FOR INDEX OF SHEETS, SEE SHEET NO. 2

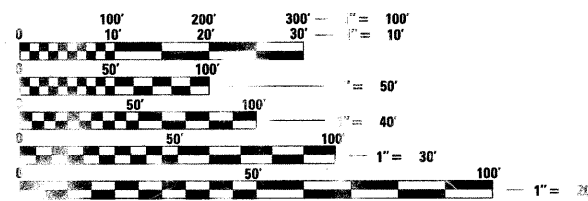
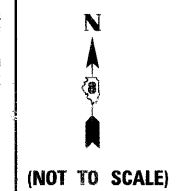
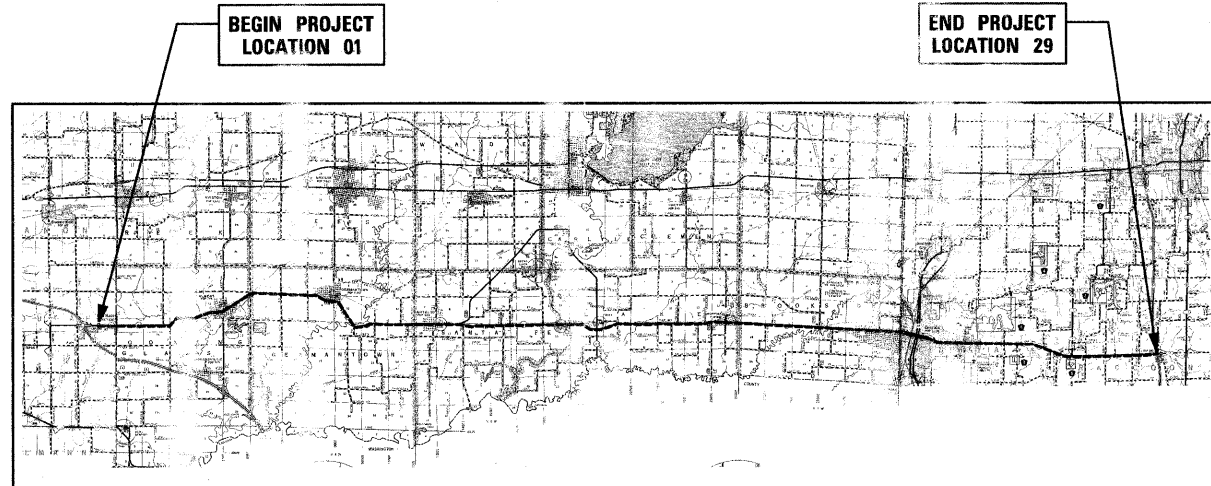
PROPOSED
HIGHWAY PLANS

ROUTE: FAP 805 (IL 161)
SECTION: D8 GUARDRAIL UPDATE 2011
PROJECT: HSIP-0805(074)
TYPE of IMPROVEMENT: GUARDRAIL UPGRADE
VARIOUS COUNTIES

C-98-039-11



Bradley G. Hummert 3/18/2011
BRADLEY G. HUMMERT
 REGISTERED PROFESSIONAL ENGINEER IN ILLINOIS
 NO. 50918 EXPIRES NOV. 30, 2011



SIZE PLANS HAVE BEEN PREPARED USING STANDARD ENGINEERING SCALES. REDUCED SIZED PLANS WILL NOT CONFORM TO STANDARD SCALES. IN MAKING MEASUREMENTS ON REDUCED PLANS, THE ABOVE SCALES MAY BE USED.

J.L.I.E.
 POINT UTILITY LOCATION INFORMATION FOR EXCAVATION
 800-892-0123
 811

LOCATION 01	366 FT. = 0.069 MILE	LOCATION 16A	582 FT. = 0.110 MILE
LOCATION 02	498 FT. = 0.094 MILE	LOCATION 16B	972 FT. = 0.184 MILE
LOCATION 03	603 FT. = 0.114 MILE	LOCATION 17	528 FT. = 0.100 MILE
LOCATION 04	- FT. = - MILE	LOCATION 18	1,317 FT. = 0.249 MILE
LOCATION 05	- FT. = - MILE	LOCATION 19	465 FT. = 0.088 MILE
LOCATION 06	471 FT. = 0.089 MILE	LOCATION 20	517 FT. = 0.098 MILE
LOCATION 07	429 FT. = 0.081 MILE	LOCATION 21	559 FT. = 0.106 MILE
LOCATION 08	247 FT. = 0.047 MILE	LOCATION 22	504 FT. = 0.095 MILE
LOCATION 09	694 FT. = 0.131 MILE	LOCATION 23	667 FT. = 0.126 MILE
LOCATION 10	467 FT. = 0.088 MILE	LOCATION 24	- FT. = - MILE
LOCATION 11	240 FT. = 0.045 MILE	LOCATION 25	767 FT. = 0.145 MILE
LOCATION 12	1,430 FT. = 0.271 MILE	LOCATION 26	339 FT. = 0.064 MILE
LOCATION 13	1,122 FT. = 0.213 MILE	LOCATION 27	- FT. = - MILE
LOCATION 14	1,072 FT. = 0.203 MILE	LOCATION 28	936 FT. = 0.177 MILE
LOCATION 15	566 FT. = 0.107 MILE	LOCATION 29	881 FT. = 0.167 MILE

GROSS LENGTH: 237,600 FT. = 45.000 MILE
 NET LENGTH = 16,993 FT. = 3.218 MILE

REVISED 6-3-11

PROJECT ENGINEER: **PATIE LEBEAU, P.E.** 618-346-3179
 PROJECT MANAGER: **CHERYL KEPLAR, P.E.** 618-346-3186

CONTRACT NO 76E78

STATE OF ILLINOIS
 DEPARTMENT OF TRANSPORTATION
 DIVISION OF HIGHWAYS

SUBMITTED *March 24 2011*
My C. Kraemer
 DEPUTY DIRECTOR OF HIGHWAYS, REGION 5 ENGINEER

May 13 2011
Scott E. Stitt, P.E. /a
 ACTING ENGINEER OF DESIGN ENVIRONMENT

May 13 2011
Christine M. Reed /a
 DIRECTOR OF HIGHWAYS, CHIEF ENGINEER

PRINTED BY THE AUTHORITY
 OF THE STATE OF ILLINOIS

LIST OF STANDARDS

000001-06	STANDARD SYMBOLS, ABBREVIATIONS & PATTERNS
280001-05	TEMPORARY EROSION CONTROL SYSTEMS
630001-09	STEEL PLATE BEAM GUARDRAIL
630101-09	GUARDRAIL MOUNTED ON EXISTING CULVERTS
630106	LONG-SPAN GUARDRAIL OVER CULVERT
630201-06	PCC / HMA STABILIZATION AT STEEL PLATE BEAM GUARDRAIL
630301-05	SHOULDER WIDENING FOR TYPE 1 (SPECIAL) GUARDRAIL TERMINALS
631031-09	TRAFFIC BARRIER TERMINAL, TYPE 6
631032-06	TRAFFIC BARRIER TERMINAL, TYPE 6A
631033-04	TRAFFIC BARRIER TERMINAL, TYPE 6B
635006-03	REFLECTOR AND TERMINAL MARKER PLACEMENT
635011-02	REFLECTOR MARKER AND MOUNTING DETAILS
701001-02	OFF-RD OPERATIONS, 2L, 2W, MORE THAN 15' (4.5 m) AWAY
701006-03	OFF-RD OPERATIONS, 2L, 2W, 15' (4.5M) TO 24" (600 MM) FROM PAVEMENT EDGE
701201-04	LANE CLOSURE, 2L, 2W, DAY ONLY, FOR SPEEDS > 45 MPH
701301-04	LANE CLOSURE, 2L, 2W, SHORT TIME OPERATIONS
701901-01	TRAFFIC CONTROL DEVICES
701326-04	

INDEX OF SHEETS

1	COVER
2	INDEX OF SHEETS, GENERAL NOTES, & LIST OF STANDARDS
3	PROJECT LOCATION MAP
4	SUMMARY OF QUANTITIES
5-6	SCHEDULE OF QUANTITIES
7-36	PLAN SHEETS
37	GUARDRAIL DETAILS

GENERAL NOTES

1. ALL ELEVATIONS REFER TO U.S.G.S. MEAN SEA LEVEL DATUM.
2. THE CONTRACTOR SHALL EXERCISE CARE IN PERFORMING REMOVALS SO AS NOT TO DISRUPT ADJOINING FEATURES THAT ARE TO REMAIN IN PLACE. ANY DAMAGE CAUSED TO ADJOINING FEATURES AS A RESULT OF THE CONTRACTOR'S NEGLIGENCE SHALL BE REPAIRED AT THE CONTRACTOR'S EXPENSE TO THE SATISFACTION OF THE ENGINEER.
3. THE PRIME CONTRACTOR SHALL BE RESPONSIBLE FOR ALL SUB-CONTRACTED WORK, REGARDLESS OF FUNDING SOURCE. THE SPECIAL PROVISIONS, SPECIFICATIONS, AND STANDARD SPECIFICATIONS SHALL GOVERN CONTRACTUAL REQUIREMENTS FOR SAID ARRANGEMENTS.
4. THE PRIME CONTRACTOR SHALL BE RESPONSIBLE FOR TRAFFIC CONTROL AND PROTECTION.
5. ALL SAW CUTTING REQUIRED FOR REMOVALS SHALL BE INCLUDED IN THE CONTRACT UNIT PRICE PER UNIT OF REMOVAL QUANTITIES.
6. THE CONTRACTOR SHALL EXERCISE CARE IN EXCAVATING AROUND EXISTING UTILITIES TO REMAIN IN PLACE, SUCH AS WATER AND SEWER MAINS, AND SHALL BE RESPONSIBLE FOR REPAIR OF THESE AND MAINTENANCE OF SERVICE, IF DAMAGED BY THE CONTRACTOR'S ACTIVITIES, AS DEEMED SUCH BY THE ENGINEER.
7. THE CONTRACTOR SHALL BE RESPONSIBLE FOR ESTABLISHING POSITIVE DRAINAGE IN THE DISTURBED AREAS, TO THE SATISFACTION OF THE ENGINEER.
8. ALL AREAS THAT ARE DISTURBED BEYOND THE SEEDING LIMITS SHALL BE GRADED BY THE CONTRACTOR AT HIS/HER EXPENSE, IN THE SAME MANNER AS FINAL GRADING WORK PER THE SPECIFICATIONS, TO THE SATISFACTION OF THE ENGINEER.
9. IN ADDITION TO WARNING SIGNS SHOWN ON THE STANDARDS FOR TRAFFIC CONTROL, ROAD CONSTRUCTION AHEAD SIGNS SHALL BE PLACED ON INTERSECTING SIDE ROADS THROUGHOUT THE WORK ZONE.
10. REMOVAL OF EXISTING OIL AND CHIP SURFACE AND AGGREGATE HAS BEEN INCLUDED IN THE EARTHWORK QUANTITIES AND WILL BE PAID FOR AT THE CONTRACT UNIT PRICE PER CU. YD. FOR EARTH EXCAVATION OF THE TYPE SPECIFIED.
11. ALL ADVANCED WARNING SIGNS SHALL BE 48" FLUORESCENT ORANGE.
12. ILLINOIS STATE LAW REQUIRES A 48-HOUR NOTICE BE GIVEN TO ALL UTILITIES BEFORE DIGGING. FIELD MARKING OF UTILITIES MAY BE OBTAINED BY CONTACTING J.U.L.I.E. OR FOR NON-MEMBERS, THE UTILITY COMPANY DIRECTLY.
13. IT IS THE INTENT OF THIS PROJECT TO COMPLETE THE MAJORITY OF GRADING WITHIN THE FRONT SLOPES UTILIZING 1V:2.5H (TYPICAL) TO 1V:2H (MAX) SLOPES. HOWEVER, THERE ARE SOME LOCATIONS WHERE GRADING WILL EXTEND BEYOND THE TOE OF THE SLOPE. SAID LOCATIONS ARE ESTIMATED AS SHOWN WITHIN THE PLANS AND WILL REQUIRE RE-GRADING OF THE DITCH AND BACK SLOPE. THE CONTRACTOR SHOULD BE AWARE THAT THE ACTUAL EXTENTS OF WORK MAY VARY FROM THAT SHOWN. FINAL EXTENT OF GRADING WILL BE AT THE DISCRETION OF THE ENGINEER.
14. THE FOLLOWING RATES OF APPLICATION HAVE BEEN USED IN CALCULATING PLAN QUANTITIES.

APPLICATION RATES

AGGREGATE MATERIALS	2.05 TONS/CU YD
GRANULAR MATERIALS	2.05 TONS/CU YD

FOR SEEDED AREAS	
NITROGEN FERTILIZER NUTRIENT	90 LBS/ACRE
PHOSPHORUS FERTILIZER NUTRIENT	90 LBS/ACRE
POTASSIUM FERTILIZER NUTRIENT	90 LBS/ACRE
AGRICULTURAL GROUND LIMESTONE	2 TONS/ACRE



COMMITMENTS

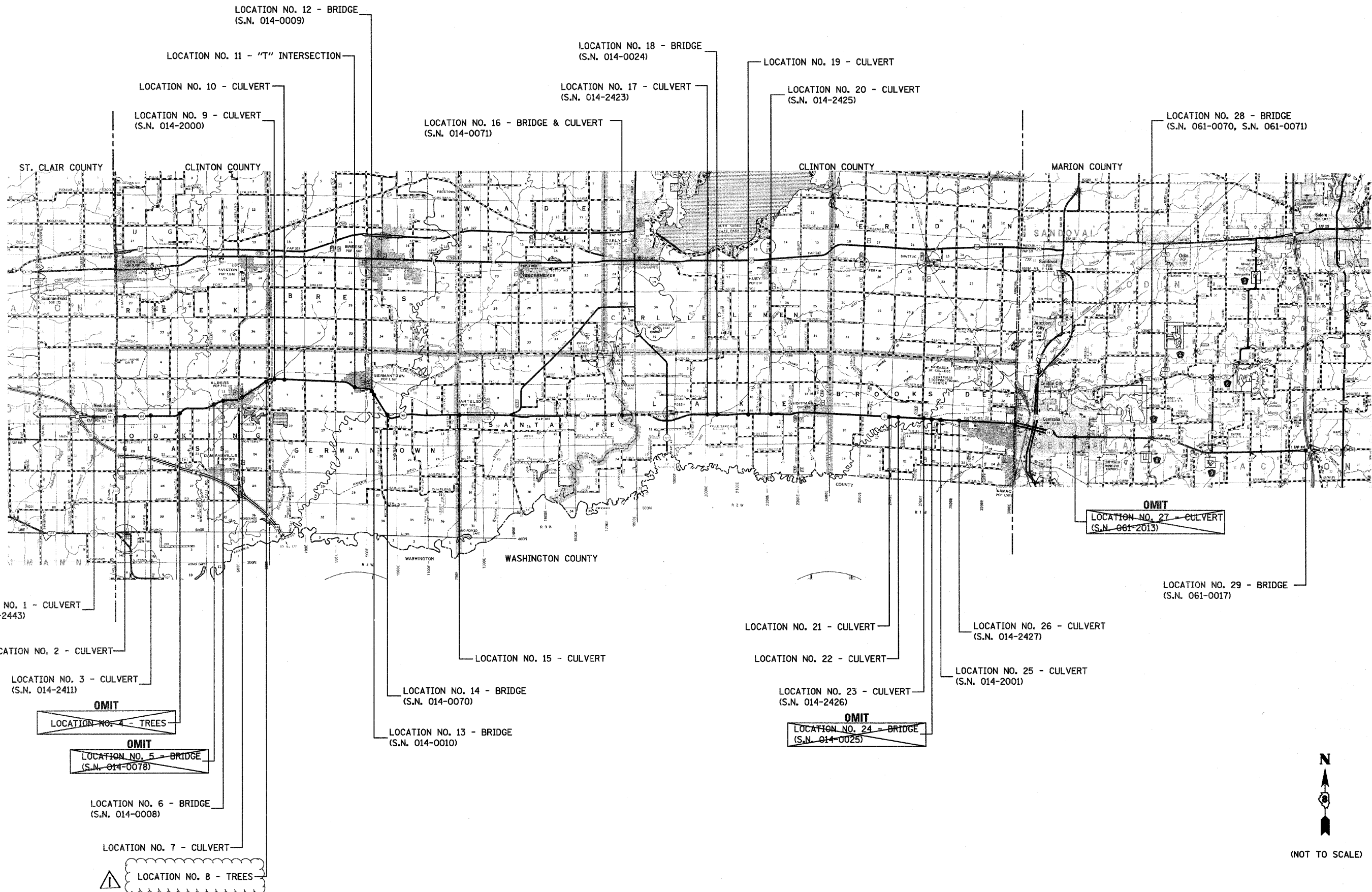
THE CONTRACTOR AND RE SHALL BE AWARE THAT THE GUARDRAIL REMOVAL AND REPLACEMENT AT LOCATION 8 MAY BE ALL OR IN PART, LOCATED OUTSIDE EXISTING ROW. THE DEPARTMENT HAS THE 'RIGHT TO ENTER' FOR PURPOSES OF INSTALLING AND/OR MAINTAINING THE GUARDRAIL.

▲ REVISÉD 6-3-11

**STATE OF ILLINOIS
DEPARTMENT OF TRANSPORTATION**

INDEX OF SHEETS, GENERAL NOTES, & LIST OF STANDARDS

FILE NAME =	USER NAME = keplarc1	DESIGNED - DLD	REVISED -	SCALE: SHEET NO. OF SHEETS STA. TO STA.	F.A.P. RTE. SECTION COUNTY TOTAL SHEETS SHEET NO. 805 D8 GUARDRAIL UPDATE 2011 VARIOUS 37 2 F.A.S. CONTRACT NO. 76E78 795 ILLINOIS FED. AID PROJECT
78-SHT-GENNOTE-02.dgn	DRAWN - DLD	REVISED -			
PLOT SCALE = 0.9444' / 1" IN.	CHECKED - BGH	REVISED -			
PLOT DATE = 5/13/2011	DATE - 3/17/2011	REVISED -			



REVISI 6-3-11

FILE NAME =	USER NAME = _USERDESCR.	DESIGNED - DLD	REVISED -
h:\6513 idot.d8 ver\6513.23 wa 3\cadd\shets\0873E78-SHT-LOCKAP-03.dgn		DRAWN - DLD	REVISED -
	PLOT SCALE = 1.500 1 / IN.	CHECKED - BGH	REVISED -
	PLOT DATE = 5/2/2011	DATE - 3/17/2011	REVISED -

STATE OF ILLINOIS
DEPARTMENT OF TRANSPORTATION

PROJECT LOCATION MAP

SCALE: SHEET NO. OF SHEETS STA. TO STA.

F.A.P. RTE.	SECTION	COUNTY	TOTAL SHEETS	SHEET NO.
805	D8 GUARDRAIL UPDATE 2011	VARIOUS	37	3
F.A.S.	CONTRACT NO. 76E78			
795	ILLINOIS FED. AID PROJECT			

SUMMARY OF QUANTITIES

90% FEDERAL
10% STATE

SUMMARY OF QUANTITIES			CONSTRUCTION TYPE CODE				SUMMARY OF QUANTITIES			CONSTRUCTION TYPE CODE			
CODE NO	ITEM	UNIT	TOTAL QUANTITIES	0021 ST. CLAIR CO.	0021 CLINTON CO.	0021 MARION CO.	CODE NO	ITEM	UNIT	TOTAL QUANTITIES	-----	-----	-----
20200100	EARTH EXCAVATION	CU YD	71	16	55								
20400800	FURNISHED EXCAVATION	CU YD	4605	40.5	4559	5.5							
25000210	SEEDING, CLASS 2A	ACRE	3.75	0.13	3.5	0.12							
25000400	NITROGEN FERTILIZER NUTRIENT	POUND	338	12	315	11							
25000500	PHOSPHORUS FERTILIZER NUTRIENT	POUND	338	12	315	11							
25000600	POTASSIUM FERTILIZER NUTRIENT	POUND	338	12	315	11							
25000700	AGRICULTURAL GROUND LIMESTONE	TON	7.5	0.1	7.3	0.1							
25100630	EROSION CONTROL BLANKET	SQ YD	17669	240.5	17299	129.5							
48101200	AGGREGATE SHOULDERS, TYPE B	TON	4315	60	4218.5	36.5							
63000003	STEEL PLATE BEAM GUARDRAIL, TYPE A, 9 FOOT POSTS	FOOT	9037.5	225	8112.5	700							
63000025	STEEL PLATE BEAM GUARDRAIL, ATTACHED TO STRUCTURES	FOOT	325	50	275								
63000350	LONG-SPAN GUARDRAIL OVER CULVERT, 12 FT 6 IN SPAN	FOOT	2925		2925								
63000370	LONG-SPAN GUARDRAIL OVER CULVERT, 25 FT SPAN	FOOT	525		525								
63100085	TRAFFIC BARRIER TERMINAL, TYPE 6	EACH	10		8	2							
63100087	TRAFFIC BARRIER TERMINAL, TYPE 6A	EACH	4		4								
63100089	TRAFFIC BARRIER TERMINAL, TYPE 6B	EACH	12		12								
63100167	TRAFFIC BARRIER TERMINAL, TYPE 1 (SPECIAL) TANGENT	EACH	86	3	81	2							
63100169	TRAFFIC BARRIER TERMINAL, TYPE 1 (SPECIAL) FLARED	EACH	10		7	3							
63200310	GUARDRAIL REMOVAL	FOOT	15235	472	13719	984							
63300725	STEEL PLATE BEAM GUARDRAIL (SHORT RADIUS)	FOOT	228	33	195								
67000400	ENGINEER'S FIELD OFFICE, TYPE A	CAL MO	5	0.2	4.4	0.4							
67100100	MOBILIZATION	L SUM	1	0.1	0.8	0.1							
70100450	TRAFFIC CONTROL AND PROTECTION, STANDARD 701201	L SUM	1	0.1	0.8	0.1							
78200410	GUARDRAIL MARKERS, TYPE A	EACH	202	5	185	12							
78201000	TERMINAL MARKER - DIRECT APPLIED	EACH	96	3	88	5							

▲ REVISÉD 6-3-11

FILE NAME =	USER NAME = jconoverpj	DESIGNED -	REVISED -	STATE OF ILLINOIS DEPARTMENT OF TRANSPORTATION	SUMMARY OF QUANTITIES	F.A. RTE.	SECTION	COUNTY	TOTAL SHEETS	SHEET NO.	
ca:\p\work\p\dot\conoverpj\d8249112\sh...	ts_engadvgn	DRAWN -	REVISED -			*	DB GUARDRAIL UPDATE 2011	VARIOUS	37	4	
	PLOT SCALE = 50.0000" / IN.	CHECKED -	REVISED -								
	PLOT DATE = 3/24/2011	DATE -	REVISED -								
						SCALE: _____		SHEET NO. ___ OF ___ SHEETS		STA. _____ TO STA. _____	
						FED. ROAD DIST. NO. _____		ILLINOIS FED. AID PROJECT		CONTRACT NO. 76E78	

EARTHWORK SCHEDULE

LOCATION			A	B*	C*	D*	E
			EARTH EXCAVATION	AVAILABLE MATERIAL (S.F. = 0.7)	REQUIRED FILL	BALANCE OF MATERIAL ("-" = SHORT)	FURNISHED EXCAVATION
			CU YD	CU YD	CU YD	CU YD	CU YD
SITE ID	HAZARD STATION	SIDE					
1	100+00	LT	8.4	5.9	29.6	-23.7	23.7
1	100+00	RT	7.0	4.9	21.6	-16.7	16.7
2	200+00	LT	4.8	3.4	10.3	-6.9	6.9
2	200+00	RT	0.0	0.0	47.4	-47.4	47.4
3	300+00	LT	0.0	0.0	55.6	-55.6	55.6
3	300+00	RT	0.0	0.0	31.6	-31.6	31.6
4	400+00	NO WORK					
5	500+00	NO WORK					
6	600+00	LT	0.0	0.0	209.5	-209.5	209.5
6	600+00	RT	0.0	0.0	45.3	-45.3	45.3
7	700+00	LT	0.0	0.0	1.0	-1.0	1.0
7	700+00	RT	0.0	0.0	258.0	-258.0	258.0
8	800+00	LT	0.0	0.0	0.0	0.0	0.0
9	900+00	LT	0.0	0.0	87.6	-87.6	87.6
9	900+00	RT	2.1	1.5	18.0	-16.5	16.5
10	1000+00	LT	23.1	16.2	28.6	-12.4	12.4
10	1000+00	RT	0.0	0.0	19.9	-19.9	19.9
11	1100+00	RT	0.0	0.0	60.1	-60.1	60.1
12	1200+00	LT	0.0	0.0	282.1	-282.1	282.1
12	1200+00	RT	0.0	0.0	285.8	-285.8	285.8
13	1300+00	LT	0.0	0.0	507.1	-507.1	507.1
13	1300+00	RT	0.0	0.0	269.8	-269.8	269.8
14	1400+00	LT	0.0	0.0	197.8	-197.8	197.8
14	1400+00	RT	0.0	0.0	10.6	-10.6	10.6
15	1500+00	LT	5.1	3.6	4.0	-0.4	0.4
15	1500+00	RT	0.0	0.0	9.0	-9.0	9.0
16A	1600+00	LT	0.0	0.0	278.6	-278.6	278.6
16A	1600+00	RT	0.0	0.0	225.6	-225.6	225.6
16B	1600+00	LT	0.0	0.0	278.6	-278.6	278.6
16B	1600+00	RT	0.0	0.0	225.6	-225.6	225.6
17	1700+00	LT	0.0	0.0	149.9	-149.9	149.9
17	1700+00	RT	0.0	0.0	110.2	-110.2	110.2
18	1800+00	LT	0.0	0.0	105.6	-105.6	105.6
18	1800+00	RT	4.5	3.2	147.5	-144.4	144.4
19	1900+00	RT	0.0	0.0	20.9	-20.9	20.9
20	2000+00	LT	0.0	0.0	1.5	-1.5	1.5
20	2000+00	RT	6.5	4.6	37.9	-33.4	33.4
21	2100+00	LT	8.8	6.2	39.2	-33.0	33.0
21	2100+00	RT	0.0	0.0	2.4	-2.4	2.4
22	2200+00	LT	0.0	0.0	7.8	-7.8	7.8
22	2200+00	RT	0.0	0.0	84.5	-84.5	84.5
23	2300+00	RT	0.0	0.0	44.6	-44.6	44.6
24	2400+00	NO WORK					
25	2500+00	LT	0.0	0.0	272.4	-272.4	272.4
25	2500+00	RT	0.0	0.0	114.3	-114.3	114.3
26	2600+00	LT	0.0	0.0	7.5	-7.5	7.5
26	2600+00	RT	0.0	0.0	3.1	-3.1	3.1
27	2700+00	NO WORK					
28	2800+00	LT	0.0	0.0	4.2	-4.2	4.2
28	2800+00	RT	0.0	0.0	1.2	-1.2	1.2
29	2900+00	LT	0.0	0.0	0.0	0.0	0.0
29	2900+00	RT	0.0	0.0	0.0	0.0	0.0
TOTALS			70.3	49.2	4,653.3	-4,604.1	4,604.1
USE			71	50	4,654	-4,604.0	4,605

SHOULDER SCHEDULE

LOCATION			AGGREGATE SHOULDERS TYPE B
			TON
SITE ID	HAZARD STATION	SIDE	
1	100+00	LT	25.1
1	100+00	RT	34.7
2	200+00	LT	39.7
2	200+00	RT	78.6
3	300+00	LT	98.0
3	300+00	RT	138.2
4	400+00	NO WORK	
5	500+00	NO WORK	
6	600+00	LT	59.8
6	600+00	RT	69.6
7	700+00	LT	9.3
7	700+00	RT	163.3
8	800+00	LT	124.8
9	900+00	RT	141.2
10	1000+00	LT	60.9
10	1000+00	RT	92.3
11	1100+00	RT	65.5
12	1200+00	LT	163.6
12	1200+00	RT	291.3
13	1300+00	LT	207.5
13	1300+00	RT	191.0
14	1400+00	LT	126.7
14	1400+00	RT	34.7
15	1500+00	LT	59.4
15	1500+00	RT	87.4
16A	1600+00	LT	161.9
16A	1600+00	RT	157.7
16B	1600+00	LT	161.8
16B	1600+00	RT	157.6
17	1700+00	LT	62.5
17	1700+00	RT	137.1
18	1800+00	LT	83.5
18	1800+00	RT	130.6
19	1900+00	RT	92.4
20	2000+00	LT	19.5
20	2000+00	RT	64.4
21	2100+00	LT	61.7
21	2100+00	RT	51.5
22	2200+00	LT	42.7
22	2200+00	RT	81.5
23	2300+00	RT	185.9
24	2400+00	NO WORK	
25	2500+00	LT	138.4
25	2500+00	RT	85.8
26	2600+00	LT	25.1
26	2600+00	RT	14.0
27	2700+00	NO WORK	
28	2800+00	LT	29.8
28	2800+00	RT	6.5
29	2900+00	LT	0.0
29	2900+00	RT	0.0
TOTALS			4,314.4
USE			4,315

SEEDING AND EROSION CONTROL

LOCATION			SEEDING CLASS 2A	NITROGEN FERTILIZER NUTRIENT	PHOSPHORUS FERTILIZER NUTRIENT	POTASSIUM FERTILIZER NUTRIENT	AGRICULTURAL GROUND LIMESTONE	EROSION CONTROL BLANKET
			SQ FT	POUND	POUND	POUND	POUND	SQ YD
SITE ID	HAZARD STATION	SIDE						
1	100+00	LT	896.0	1.9	1.9	1.9	82.3	99.6
1	100+00	RT	1267.0	2.6	2.6	2.6	116.3	140.8
2	200+00	LT	1562.0	3.2	3.2	3.2	143.4	173.6
2	200+00	RT	4137.0	8.5	8.5	8.5	379.9	459.7
3	300+00	LT	2786.0	5.8	5.8	5.8	255.8	309.6
3	300+00	RT	3355.0	6.9	6.9	6.9	308.1	372.8
4	400+00	NO WORK						
5	500+00	NO WORK						
6	600+00	LT	3513.0	7.3	7.3	7.3	322.6	390.3
6	600+00	RT	3109.0	6.4	6.4	6.4	285.5	345.4
7	700+00	LT	1794.0	3.7	3.7	3.7	164.7	199.3
7	700+00	RT	5360.0	11.1	11.1	11.1	494.0	597.8
8	800+00	LT	3295.5	6.8	6.8	6.8	302.6	366.2
9	900+00	LT	3038.0	6.3	6.3	6.3	279.0	337.8
9	900+00	RT	2367.0	4.9	4.9	4.9	217.4	263.0
10	1000+00	LT	3421.0	7.1	7.1	7.1	314.1	380.1
10	1000+00	RT	2095.0	4.3	4.3	4.3	192.4	232.8
11	1100+00	RT	2186.0	4.5	4.5	4.5	200.7	242.9
12	1200+00	LT	3641.0	7.5	7.5	7.5	334.3	404.6
12	1200+00	RT	7564.0	15.6	15.6	15.6	694.6	840.4
13	1300+00	LT	6068.0	12.5	12.5	12.5	557.2	674.2
13	1300+00	RT	4127.0	8.5	8.5	8.5	379.0	458.6
14	1400+00	LT	7140.0	14.8	14.8	14.8	655.6	793.3
14	1400+00	RT	1822.0	3.8	3.8	3.8	167.3	202.4
15	1500+00	LT	1873.0	3.9	3.9	3.9	172.0	208.1
15	1500+00	RT	1973.0	4.1	4.1	4.1	181.2	219.2
16A	1600+00	LT	3439.0	7.1	7.1	7.1	315.8	382.1
16A	1600+00	RT	2992.0	6.2	6.2	6.2	274.7	332.4
16B	1600+00	LT	6431.0	13.3	13.3	13.3	590.5	714.6
16B	1600+00	RT	6612.0	13.7	13.7	13.7	607.2	734.7
17	1700+00	LT	5527.0	11.4	11.4	11.4	507.5	614.1
17	1700+00	RT	4332.0	9.0	9.0	9.0	397.8	481.3
18	1800+00	LT	6222.0	12.9	12.9	12.9	571.3	691.3
18	1800+00	RT	8256.0	17.1	17.1	17.1	758.1	917.3
19	1900+00	RT	1854.0	3.8	3.8	3.8	170.2	206.0
20	2000+00	LT	549.0	1.1	1.1	1.1	50.4	61.0
20	2000+00	RT	2392.0	4.9	4.9	4.9	219.7	265.8
21	2100+00	LT	1651.0	3.4	3.4	3.4	151.6	183.4
21	2100+00	RT	1299.0	2.7	2.7	2.7	119.3	144.3
22	2200+00	LT	1475.0	3.0	3.0	3.0	135.4	163.9
22	2200+00	RT	3063.0	6.3	6.3	6.3	281.3	340.3
23	2300+00	RT	4983.0	10.3	10.3	10.3	457.6	553.7
24	2400+00	NO WORK						
25	2500+00	LT	9121.0	18.8	18.8	18.8	837.6	1013.4
25	2500+00	RT	7796.0	16.1	16.1	16.1	715.9	866.2
26	2600+00	LT	1067.0	2.2	2.2	2.2	98.0	118.6
26	2600+00	RT	561.0	1.2	1.2	1.2	51.5	62.3
27	2700+00	NO WORK						
28	2800+00	LT	736.0	1.5	1.5	1.5	67.6	81.8
28	2800+00	RT	429.0	0.9	0.9	0.9	39.4	47.7
29	2900+00	LT	0.0	0.0	0.0	0.0	0.0	0.0
29	2900+00	RT	0.0	0.0	0.0	0.0	0.0	0.0
TOTALS			159,196.5	328.9	328.9	328.9	14,618.6	17,688.5
USE			13,75 Acres	338	338	338	17.5 Ton	17,689

NOTES:

- *NOT A PAY ITEM
- 1.COLUMN "A" HAS BEEN ESTIMATED FROM EXISTING & PROPOSED SITE MODELS.
- 2.COLUMN "B" IS THE ESTIMATED SUITABLE MATERIAL AFTER A SHRINKAGE FACTOR (S.F.) IS APPLIED.
- 3.COLUMN "C" IS THE AMOUNT OF EARTH THAT IS EXPECTED TO BRING THE IMPROVEMENTS UP TO GRADE.
- 4.COLUMN "D" IS THE BALANCE OF MATERIAL AT EACH SITE.
- 5.COLUMN "E" IS THE ESTIMATED AMOUNT OF MATERIAL NEEDED FROM AN OUTSIDE SOURCE.

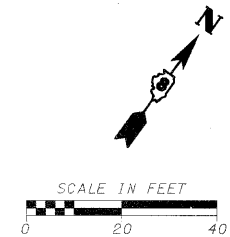
REVISD 6-3-11

FILE NAME = h:\6513\dot db var\6513.03 wo 3\CADD\Sh...	USER NAME = USERDESCR	DESIGNED - DLD	REVISED -	STATE OF ILLINOIS DEPARTMENT OF TRANSPORTATION	SCHEDULE OF QUANTITIES				F.A.P. RTE.	SECTION	COUNTY	TOTAL SHEETS	SHEET NO.		
	PLOT SCALE = 1:2000' / IN.	DRAWN - DLD	REVISED -		SCALE:	SHEET NO.	OF	SHEETS	STA.	TO STA.	805	DB GUARDRAIL UPDATE 2011	VARIOUS	37	5
	PLOT DATE = 5/4/2011	CHECKED - BGH	REVISED -								F.A.S.				
		DATE - 3/17/2011	REVISED -								795	ILLINOIS FED. AID PROJECT			CONTRACT NO. 76E78

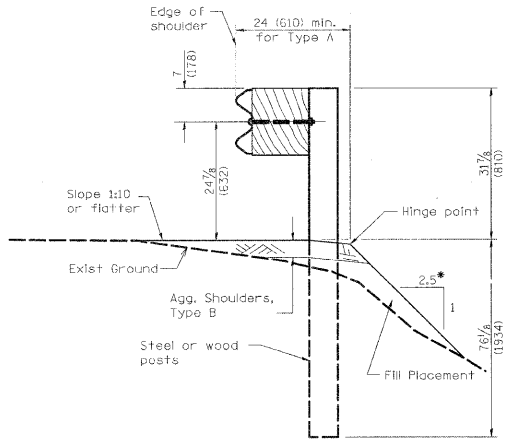
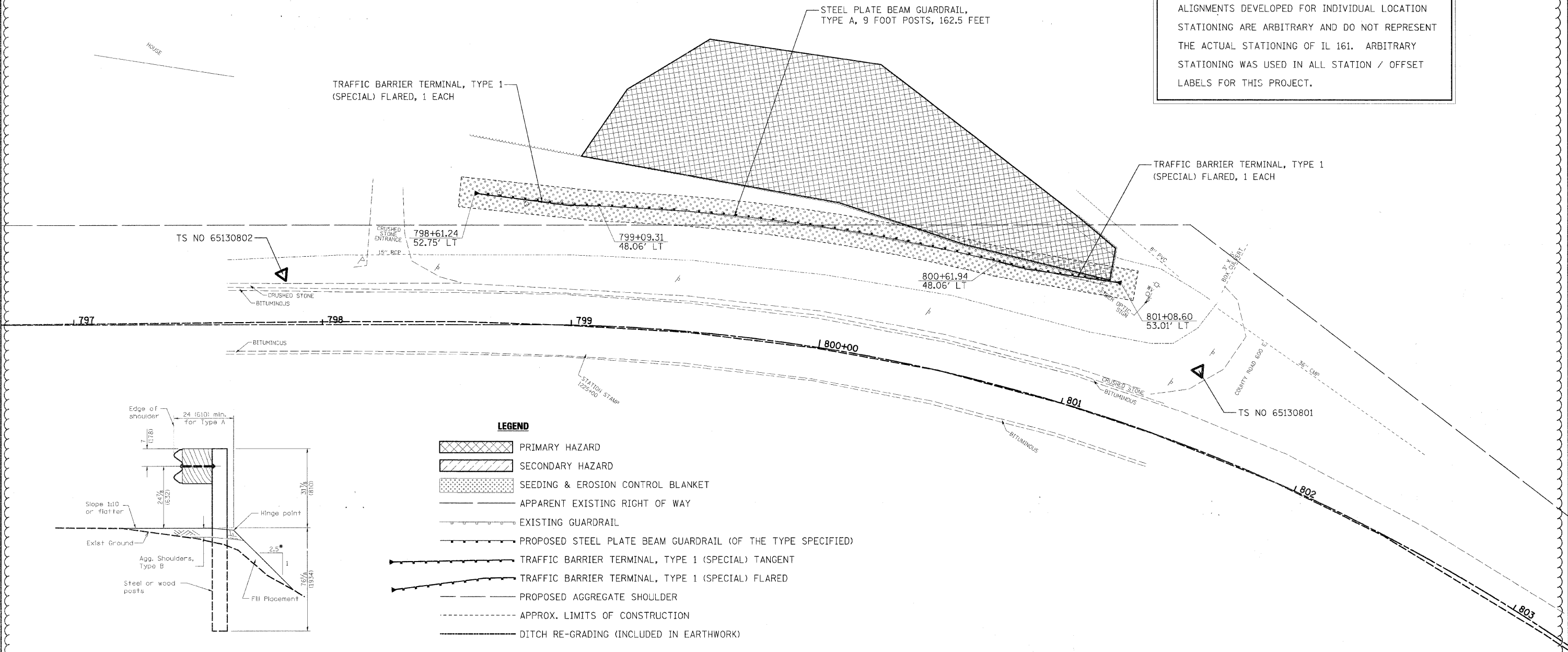
GUARDRAIL SCHEDULE

LOCATION	GUARDRAIL REMOVAL	STEEL PLATE BEAM GUARDRAIL, TYPE A, 9 FOOT POSTS	STEEL PLATE BEAM GUARDRAIL, ATTACHED TO STRUCTURES	LONG-SPAN GUARDRAIL OVER CULVERT, 12 FT 6 IN SPAN	LONG-SPAN GUARDRAIL OVER CULVERT, 25 FT SPAN	TRAFFIC BARRIER TERMINAL, TYPE 6	TRAFFIC BARRIER TERMINAL, TYPE 6A	TRAFFIC BARRIER TERMINAL, TYPE 6B	TRAFFIC BARRIER TERMINAL, TYPE 1 (SPECIAL) TANGENT	TRAFFIC BARRIER TERMINAL, TYPE 1 (SPECIAL) FLARED	STEEL PLATE BEAM GUARDRAIL (SHORT RADIUS)	GUARDRAIL MARKERS, TYPE A	TERMINAL MARKER - DIRECT APPLIED
	FT	FOOT	FOOT	FOOT	FOOT	EACH	EACH	EACH	EACH	EACH	FOOT	EACH	EACH
SITE ID HAZARD STATION SIDE													
1 100+00 LT	217.0	87.5	25.0						1		33.0	2	1
1 100+00 RT	255.0	137.5	25.0						2			3	2
2 200+00 LT	453.0	62.5		162.5					2			3	2
2 200+00 RT	454.0	62.5		162.5					2			3	2
3 300+00 LT	130.0	150.0	25.0						2		64.0	3	2
3 300+00 RT	180.0	100.0			175.0				2			4	2
4 400+00	NO WORK												
5 500+00	NO WORK												
6 600+00 LT	267.0	50.0					2		2			2	2
6 600+00 RT	378.0	125.0					2		2			3	2
7 700+00 LT	190.0	112.5	12.5						2			2	2
7 700+00 RT	255.0	25.0		162.5					2			3	2
8 800+00 LT	255.0	162.5							2			3	2
9 900+00 LT	265.0	287.5	50.0						2			5	2
9 900+00 RT	167.0	250.0	50.0						2		60.0	3	2
10 1000+00 LT	105.0	62.5		162.5					2			5	2
10 1000+00 RT	104.0	50.0		162.5					2			3	2
11 1100+00 RT	105.0	12.5							2			1	2
12 1200+00 LT	854.0	550.0				2			4			9	4
12 1200+00 RT	473.0	225.0				2			4			5	4
13 1300+00 LT	512.0	237.5				2			3		27.0	5	3
13 1300+00 RT	445.0	162.5				2			3		12.0	4	3
14 1400+00 LT	330.0	375.0						2	3		16.0	7	3
14 1400+00 RT	365.0	112.5						2	3	1	16.0	3	3
15 1500+00 LT	180.0	75.0		162.5					2			3	2
15 1500+00 RT	180.0	87.5		162.5					2			4	2
16A 1600+00 LT	404.0	175.0						1	1			5	1
16A 1600+00 RT	479.0	250.0		162.5				1	1			6	1
16B 1600+00 LT	965.0	625.0			175.0			1	1			11	1
16B 1600+00 RT	891.0	550.0			175.0			1	1			10	1
17 1700+00 LT	304.0	75.0		162.5					2			3	2
17 1700+00 RT	329.0	125.0		162.5					2			4	2
18 1800+00 LT	534.0	475.0						2	2			8	2
18 1800+00 RT	496.0	462.5						2	2			8	2
19 1900+00 RT	279.0	75.0		162.5					2			3	2
20 2000+00 LT	241.0	50.0		162.5					2			3	2
20 2000+00 RT	241.0	162.5		162.5					1	1		5	2
21 2100+00 LT	166.0	137.5	12.5						1	1		2	2
21 2100+00 RT	291.0	187.5		162.5					2			5	2
22 2200+00 LT	254.0	137.5		162.5					2			4	2
22 2200+00 RT	217.0	37.5		162.5					1	1		3	2
23 2300+00 RT	217.0	262.5		162.5					2			6	2
24 2400+00	NO WORK												
25 2500+00 LT	267.0	387.5	37.5						2			6	2
25 2500+00 RT	267.0	375.0	37.5						2			6	2
26 2600+00 LT	172.0	100.0	25.0						1	1		2	2
26 2600+00 RT	178.0	125.0	25.0						2			2	2
27 2700+00	NO WORK												
28 2800+00 LT	175.0	87.5								2		2	2
28 2800+00 RT	113.0	137.5								1		2	1
29 2900+00 LT	348.0	225.0				1			1			4	1
29 2900+00 RT	348.0	250.0				1			1			4	1
TOTALS	15,235.0	9,037.5	325.0	2,925.0	525.0	10	4	12	86	10	228.0	202	96
USE	15,235	9,037.5	325.0	2,925.0	525.0	10	4	12	86	10	228.0	202	96

REVISÉ 6-3-11



ALIGNMENTS DEVELOPED FOR INDIVIDUAL LOCATION STATIONING ARE ARBITRARY AND DO NOT REPRESENT THE ACTUAL STATIONING OF IL 161. ARBITRARY STATIONING WAS USED IN ALL STATION / OFFSET LABELS FOR THIS PROJECT.



TYPICAL SPBGR SECTION WITH 1:2.5 SLOPE
(SEE HIGHWAY STANDARDS FOR SECTION AT TERMINAL SECTION)
*1V:2.5H (TYP); 1V:2H (MAX)

- LEGEND**
- PRIMARY HAZARD
 - SECONDARY HAZARD
 - SEEDING & EROSION CONTROL BLANKET
 - APPARENT EXISTING RIGHT OF WAY
 - EXISTING GUARDRAIL
 - PROPOSED STEEL PLATE BEAM GUARDRAIL (OF THE TYPE SPECIFIED)
 - TRAFFIC BARRIER TERMINAL, TYPE 1 (SPECIAL) TANGENT
 - TRAFFIC BARRIER TERMINAL, TYPE 1 (SPECIAL) FLARED
 - PROPOSED AGGREGATE SHOULDER
 - APPROX. LIMITS OF CONSTRUCTION
 - DITCH RE-GRADING (INCLUDED IN EARTHWORK)

TS NO 65130802
STA 797+84.05, 20.22' LT
N=687396.00, E=2460226.57

TS NO 65130801
STA 801+47.40, 29.85' LT
N=687578.58, E=2460548.67

REVISED SHEET 6-3-11

FILE NAME =	USER NAME = USERDESCR	DESIGNED - DLD	REVISED -	STATE OF ILLINOIS DEPARTMENT OF TRANSPORTATION	LOCATION 08 TREES-EAST OF ALBERS	F.A.P. RTE.	SECTION	COUNTY	TOTAL SHEETS	SHEET NO.	
h:\6513\dot c8 var\6513.03\w 3\cadd\shets\0873E78-SHT-PLAN_08-14.dgn	PLOT SCALE = 20.00' / IN.	DRAWN - DLD	REVISED -			805	DB GUARDRAIL UPDATE 2011	VARIOUS	37	14	
	PLOT DATE = 5/2/2011	CHECKED - BGH	REVISED -			F.A.S.					CONTRACT NO. 76E78
		DATE - 3/17/2011	REVISED -			795					ILLINOIS FED. AID PROJECT
					SCALE:	SHEET NO.	OF	SHEETS	STA.	TO STA.	