

STATE OF ILLINOIS
DEPARTMENT OF TRANSPORTATION
DIVISION OF HIGHWAYS

**PROPOSED
HIGHWAY PLANS**

FAI ROUTE 55 / 70 (INTERSTATES 55 / 70)
SECTION 60-10W,60-10RS-1
PROJECT IM-0005(854)
LANE WIDENING WITH SHOULDER & RESURFACING
MADISON COUNTY

| F.A.I. RTE. | SECTION | COUNTY | TOTAL SHEETS | SHEET NO. |
|-------------|--------------------|----------|--------------------|-----------|
| 55/70 | 60-10W-1,60-10RS-1 | MADISON | 29 | 1 |
| | | ILLINOIS | CONTRACT NO. 76E94 | |

INDEX OF SHEETS

- 1 COVER SHEET
- 2-3 GENERAL NOTES & COMMITMENTS
- 4-5 SUMMARY OF QUANTITIES
- 6 TYPICAL SECTIONS
- 7-8 SCHEDULES OF QUANTITIES
- 9 ALIGNMENTS, TIES, AND BENCHMARKS
- 10-12 PLAN AND PROFILE SHEETS
- 13 TRAFFIC CONTROL DETAILS
- 14-15 PAVEMENT MARKING DETAILS
- 16-17 MISCELLANEOUS DETAILS
- 18-29 CROSS SECTIONS
HIGHWAY STANDARDS

IDOT HIGHWAY STANDARDS

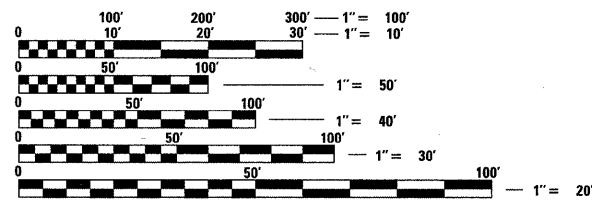
| | | | |
|-----------|-----------|-----------|-----------|
| 000001-06 | 601001-04 | 635011-02 | 701426-04 |
| 001001-02 | 601101-01 | 642001-01 | 701456-01 |
| 001006 | 630001-09 | 701101-02 | 701901-01 |
| 280001-05 | 630301-05 | 701400-05 | 720011-01 |
| 420001-07 | 631011-07 | 701401-06 | 780001-02 |
| 482011-03 | 635001-01 | 701406-06 | 781001-03 |
| 483001-04 | 635006-03 | 701411-07 | |

I-55/70

ADT (2004) = 43,600
ADT (2024) = 64,500
MU = 22.6%
SU = 4.2%

I-55

ADT (2005) = 39,400
ADT (2030) = 50,500
MU = 23.3%
SU = 3.7%



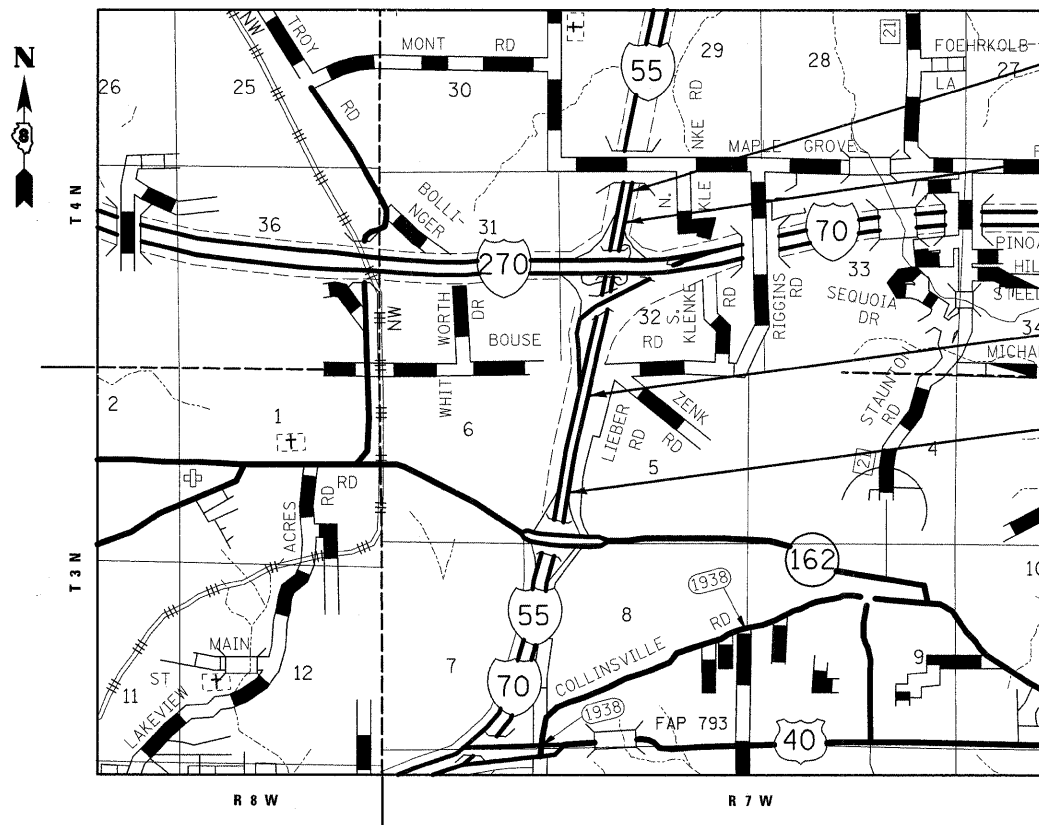
FULL SIZE PLANS HAVE BEEN PREPARED USING STANDARD ENGINEERING SCALES. REDUCED SIZED PLANS WILL NOT CONFORM TO STANDARD SCALES. IN MAKING MEASUREMENTS ON REDUCED PLANS, THE ABOVE SCALES MAY BE USED.

J.U.L.I.E.
JOINT UTILITY LOCATION INFORMATION FOR EXCAVATION
1-800-892-0123
OR 811

PROJECT ENGINEER PATTI LEBEAU (618) 346-3179
PROJECT MANAGER CHERYL KEPLAR (618) 346-3186

CONTRACT NO. 76E94

C-98-055-11



SCALE
1" = 1/2 MILE

GROSS LENGTH = 7426.04 FT. = 1.406 MILES
NET LENGTH = 2870.41 FT. = 0.544 MILES

RESURFACING

STA 1263+18.00
BEGIN SECTION 60-10RS-1
BEGIN PROJECT
STA 1271+50.00
END SECTION 60-10RS-1

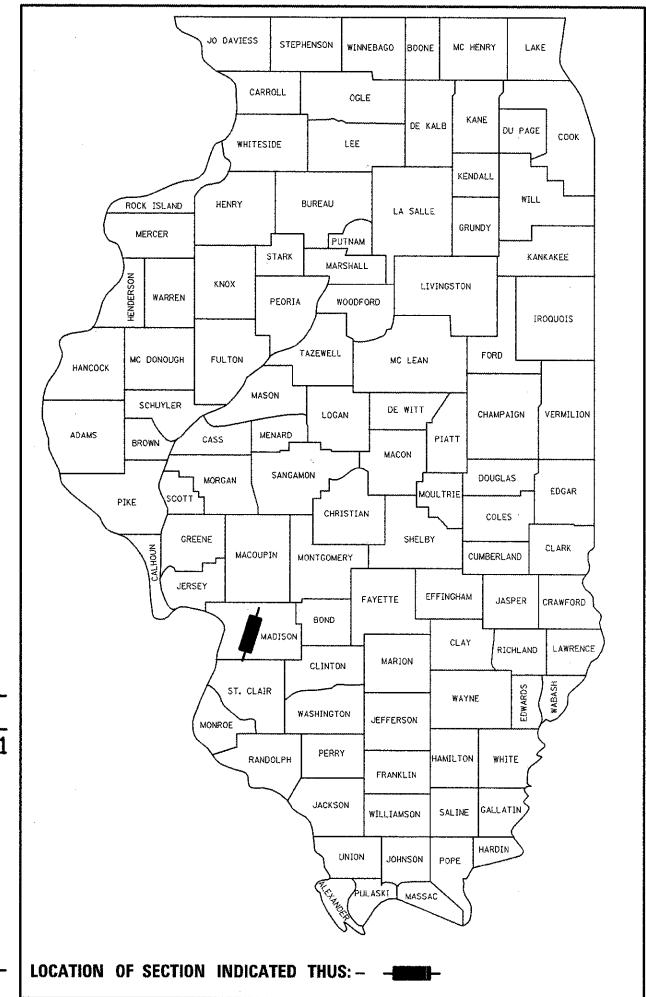
LANE WIDENING WITH SHOULDER

STA 1317+05.63
BEGIN SECTION 60-10W
STA 1337+44.04
END SECTION 60-10W
END PROJECT



Steven R. Donahue 3/17/11
Steven R. Donahue, P.E. Date
License Expires 11/30/2011

D-98-054-11



LOCATION OF SECTION INDICATED THUS: - [shaded area] -

PLANS PREPARED BY

HORNER & SHIFRIN, INC.
ENGINEERS
www.HornerShifrin.com

640 Pierce Boulevard, Suite 200
O'Fallon, Illinois 62269
Phone: (618) 622-3040
Illinois Professional Design Firm
No. 184-000435
License Expires 4/30/2011

STATE OF ILLINOIS
DEPARTMENT OF TRANSPORTATION
DIVISION OF HIGHWAYS

SUBMITTED March 24 2011
M. C. Chamic
DEPUTY DIRECTOR OF HIGHWAYS, REGION 5 ENGINEER

May 13 2011
Scott E. Stett, P.E.
Acting ENGINEER OF DESIGN AND ENVIRONMENT

May 13 2011
Christine M. Reed
DIRECTOR OF HIGHWAYS, CHIEF ENGINEER

PRINTED BY THE AUTHORITY
OF THE STATE OF ILLINOIS

USER NAME = jprattibone
PLOT DATE = 3/16/2011
PLOT TIME = 8:03:52 AM
PLOT SCALE = 56.0000 / 1 IN.
PLOT DRIVER = TR-Plot-Black-plt
FILE NAME = I:\980504\980507\CAD\TV_Plans\0876E94-18t-cover.dgn