










LEGEND

-  ARROW BOARD
-  WORK AREA
-  WORKER
-  SIGN
-  DIRECTIONAL INDICATOR BARRICADE WITH STEADY BURN MONODIRECTIONAL LIGHT
-  TYPE II BARRICADE, DRUM, OR VERTICAL BARRICADE WITH STEADY BURN MONODIRECTIONAL LIGHT
-  FLAGGER WITH TRAFFIC CONTROL SIGN
-  TYPE II BARRICADE OR DRUMS
-  DRUMS WITH STEADY BURNING MONODIRECTIONAL LIGHT

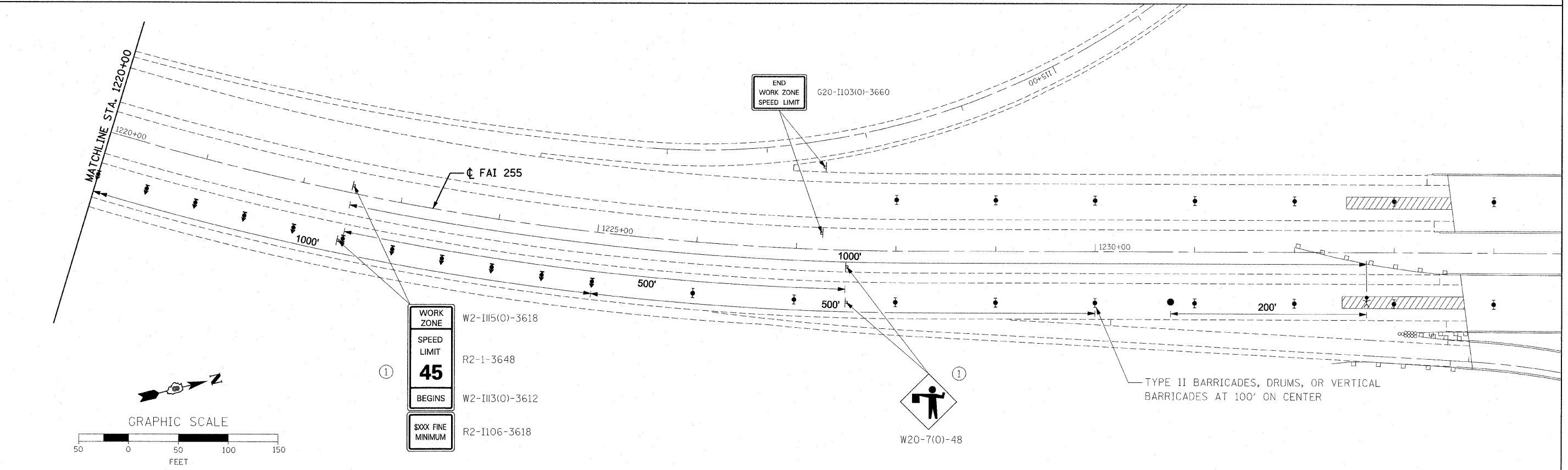
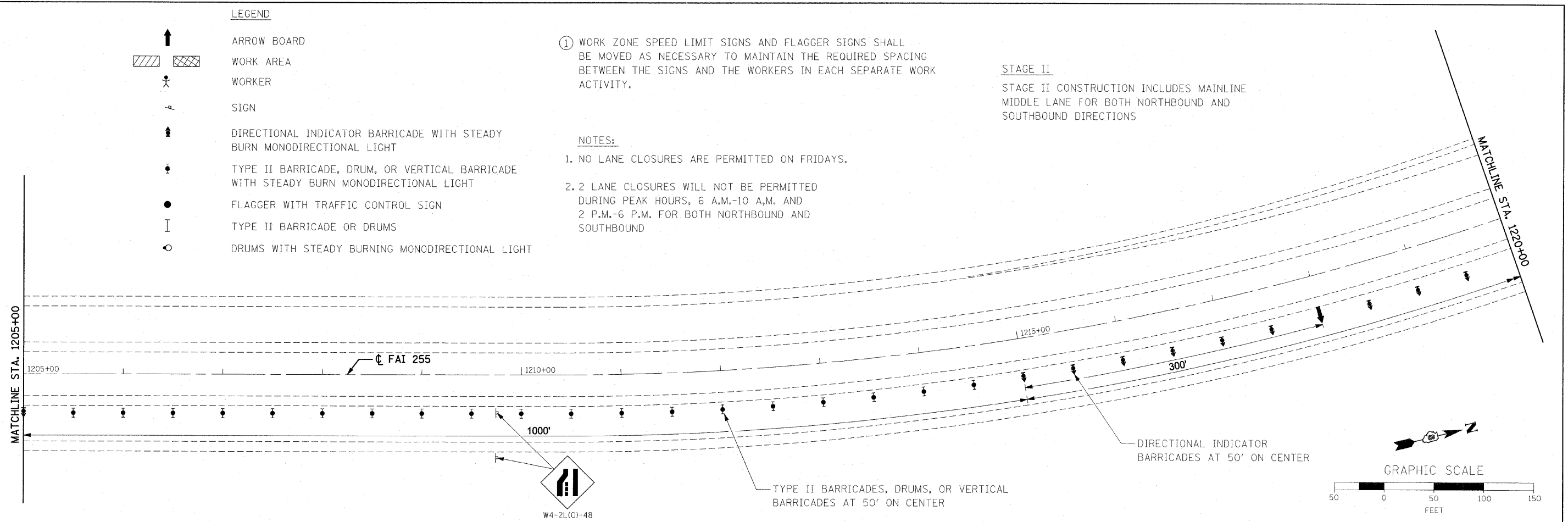
① WORK ZONE SPEED LIMIT SIGNS AND FLAGGER SIGNS SHALL BE MOVED AS NECESSARY TO MAINTAIN THE REQUIRED SPACING BETWEEN THE SIGNS AND THE WORKERS IN EACH SEPARATE WORK ACTIVITY.

NOTES:

1. NO LANE CLOSURES ARE PERMITTED ON FRIDAYS.
2. 2 LANE CLOSURES WILL NOT BE PERMITTED DURING PEAK HOURS, 6 A.M.-10 A.M. AND 2 P.M.-6 P.M. FOR BOTH NORTHBOUND AND SOUTHBOUND

STAGE II

STAGE II CONSTRUCTION INCLUDES MAINLINE MIDDLE LANE FOR BOTH NORTHBOUND AND SOUTHBOUND DIRECTIONS



WORK ZONE	W2-III5(O)-3618
SPEED LIMIT	R2-1-3648
BEGINS	W2-III3(O)-3612
MINIMUM	R2-II06-3618