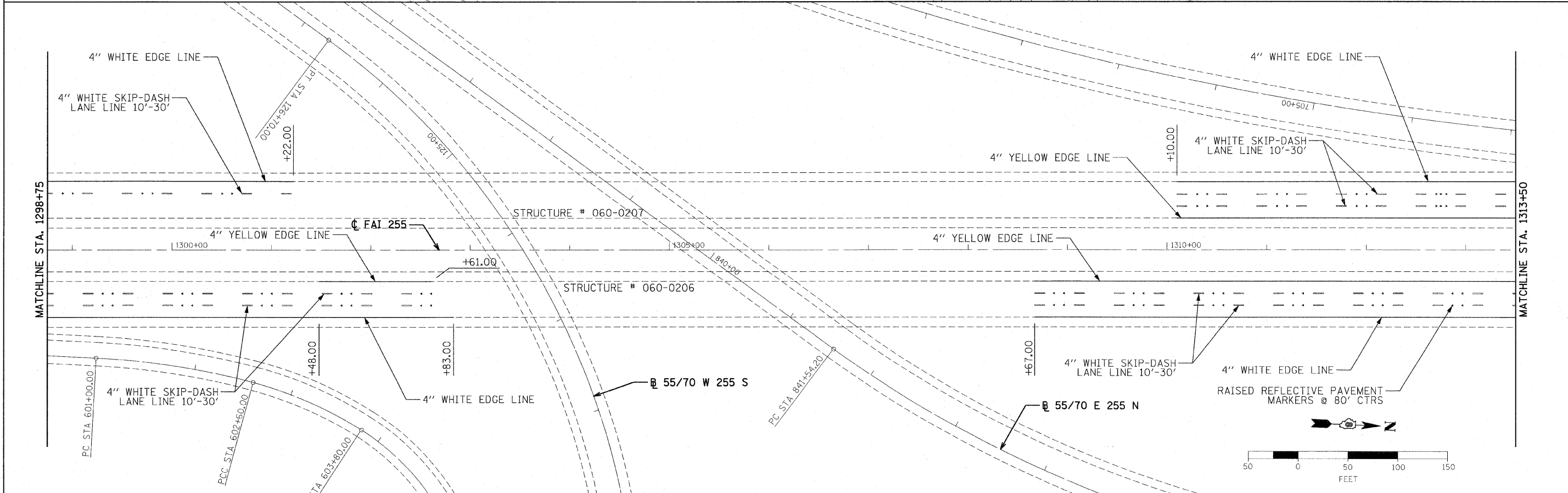
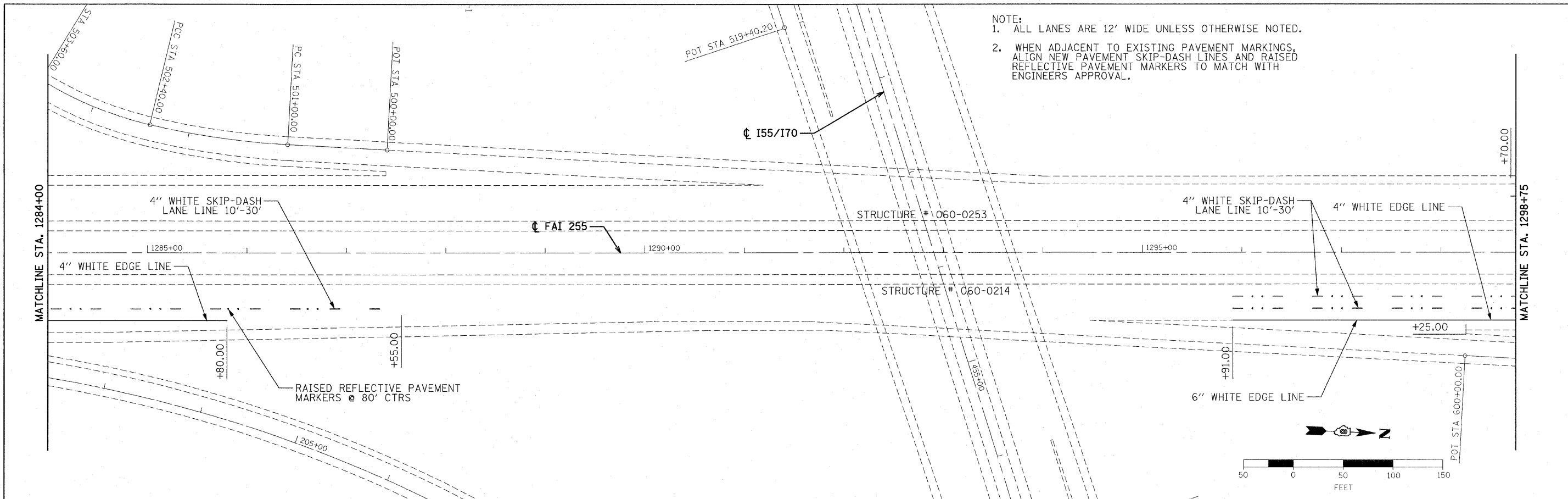


NOTE:
 1. ALL LANES ARE 12' WIDE UNLESS OTHERWISE NOTED.
 2. WHEN ADJACENT TO EXISTING PAVEMENT MARKINGS, ALIGN NEW PAVEMENT SKIP-DASH LINES AND RAISED REFLECTIVE PAVEMENT MARKERS TO MATCH WITH ENGINEERS APPROVAL.



FILE NAME = D8378682-SHT03-PMK_W038.dgn	USER NAME = jbailey	DESIGNED - D SOMMER	REVISED -	STATE OF ILLINOIS DEPARTMENT OF TRANSPORTATION	F.A.I. 255 (I-255) PAVEMENT MARKING SHEET		F.A.I. RTE. 255	SECTION 60-(7, 8) RS-1	COUNTY MADISON	TOTAL SHEETS 29	SHEET NO. 26	
	PLOT SCALE = 5/8"=20' IN.	CHECKED - T NITTLER	REVISED -		SCALE: 1"=50'	SHEET NO. 3 OF 5 SHEETS	STA. 1284+00 TO STA. 1313+50	CONTRACT NO. 76E98				
	PLOT DATE = 3/30/2011	DATE - 03/23/11	REVISED -		ILLINOIS FED. AID PROJECT							