

SECTION THRU INTEGRAL ABUTMENT
(Horiz. dim. @ Rt. L's)

*Included in the cost of Pipe Underdrains for Structures.

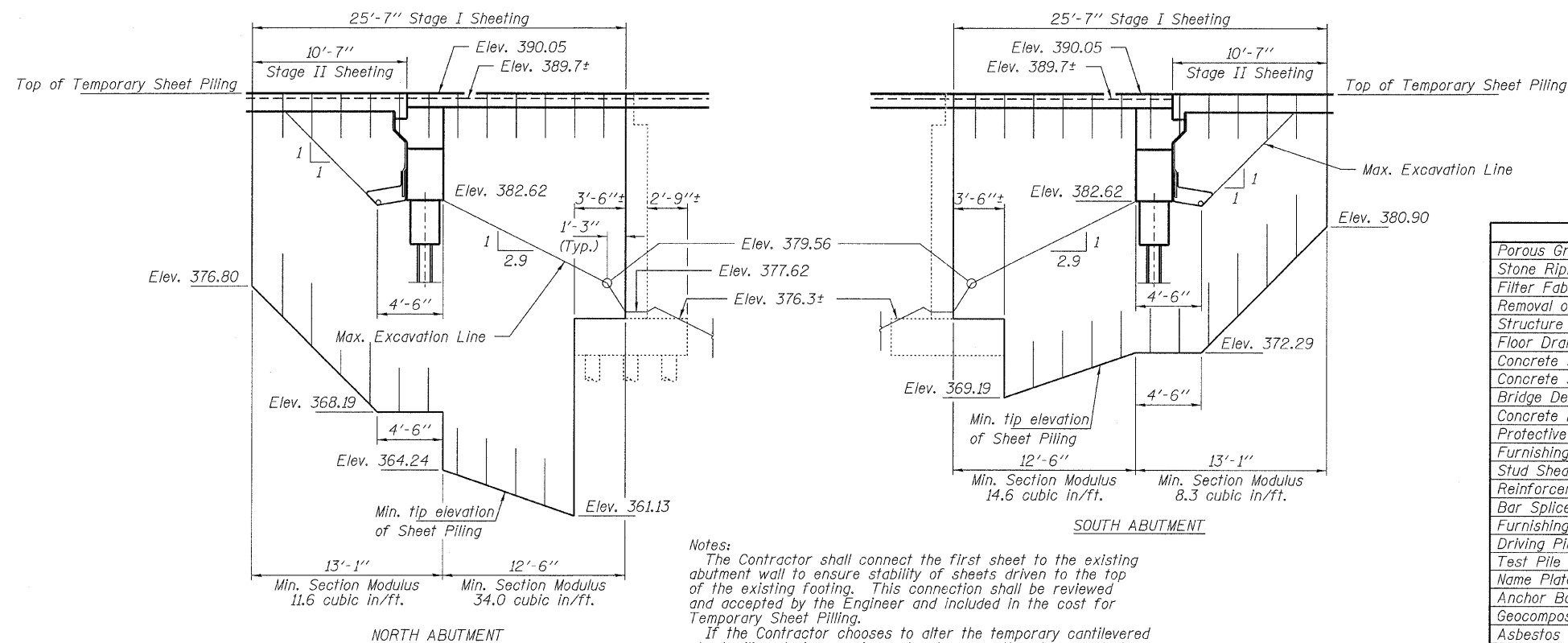
All drainage system components shall extend to 2'-0" from the end of each wingwall except an outlet pipe shall extend until intersecting with the side slopes. The pipes shall drain into concrete headwalls. (See Article 601.05 of the Standard Specifications and Highway Standard 601101)

GENERAL NOTES

Fasteners shall be AASHTO M164 Type 1, mechanically galvanized bolts. Bolts 3/4"φ, holes 5/8"φ, unless otherwise noted.
Calculated weight of Structural Steel = 67,770 lbs. (Grade 50) and 3,920 lbs. (Grade 36).
No field welding is permitted except as specified in the contract documents.
Reinforcement bars shall conform to the requirements of ASTM A 706 Gr 60. See Special Provisions.
Reinforcement bars designated (E) shall be epoxy coated.
The Inorganic Zinc Rich Primer / Acrylic / Acrylic Paint System shall be used for shop and field painting of new structural steel except where otherwise noted. The color of the final finish coat for all interior steel surfaces shall be gray, Munsell No. 5B 7/1. The color of the final finish coat for the exterior and bottom flange of the fascia beams shall be Interstate Green, Munsell No. 7.5G 4/8. See Special Provision for "Cleaning and Painting New Metal Structures".
Layout of slope protection system may be varied to suite ground conditions as directed by the Engineer.
Slip forming of the parapets is not allowed.

STATION 712+80
BUILT 20__ BY
STATE OF ILLINOIS
F.A.P. RTE. 776 SEC. 102B-1
LOADING HL-93
STR. NO. 033-0054

NAME PLATE
See Std. 515001



Notes:
The Contractor shall connect the first sheet to the existing abutment wall to ensure stability of sheets driven to the top of the existing footing. This connection shall be reviewed and accepted by the Engineer and included in the cost for Temporary Sheet Piling.
If the Contractor chooses to alter the temporary cantilevered sheet piling design requirements shown on the plans, a design submittal including plan details and calculations will be required for review and acceptance by the Engineer.

TOTAL BILL OF MATERIAL

ITEM	UNIT	SUPER	SUB	TOTAL
Porous Granular Embankment, Special	Cu. Yd.			105
Stone Riprap, Class A4	Sq. Yd.			640
Filter Fabric	Sq. Yd.			640
Removal of Existing Structures	Each			1
Structure Excavation	Cu. Yd.			214
Floor Drains	Each	8		8
Concrete Structures	Cu. Yd.		51.2	51.2
Concrete Superstructure	Cu. Yd.	214.8		214.8
Bridge Deck Grooving	Sq. Yd.	460		460
Concrete Encasement	Cu. Yd.		4.0	4.0
Protective Coat	Sq. Yd.	581	16	597
Furnishing and Erecting Structural Steel	L. Sum	1		1
Stud Shear Connectors	Each	1,044		1,044
Reinforcement Bars, Epoxy Coated	Pound	49,330	5,600	54,930
Bar Splicers	Each	450	116	566
Furnishing Steel Piles HP10x42	Foot		680	680
Driving Piles	Foot		680	680
Test Pile Steel HP10x42	Each		2	2
Name Plates	Each		1	1
Anchor Bolts, 1"	Each		24	24
Geocomposite Wall Drain	Sq. Yd.		66	66
Asbestos Bearing Pad Removal	Each		8	8
Temporary Sheet Piling	Sq. Ft.		964	964
Pipe Underdrains for Structures 4"	Foot			136

TEMPORARY SHEET PILING AND AT ABUTMENTS

FILE NAME = 890039-ah-bridge.dgn	USER NAME =	DESIGNED - S.M.S.	REVISED -	STATE OF ILLINOIS DEPARTMENT OF TRANSPORTATION	GENERAL DATA STRUCTURE NO. 033-0054	F.A.P.	SECTION	COUNTY	TOTAL SHEETS	SHEET NO.	
HAMPTON, LENZINI AND RENWICK, INC. 2085 STEVENSON DRIVE, SUITE 201 SPRINGFIELD, ILLINOIS 62703 ILLINOIS PROFESSIONAL DESIGN FIRM LS / PE / SE CORP. 184-100959	PLOT SCALE =	CHECKED - C.C.S.	REVISED -			776	102B-1	HAMILTON	52	25	
	PLOT DATE = 2/22/2011	DRAWN - D.A.B.	REVISED -			CONTRACT NO. 78067					
		CHECKED - M.D.C.	REVISED -			ILLINOIS FED. AID PROJECT					