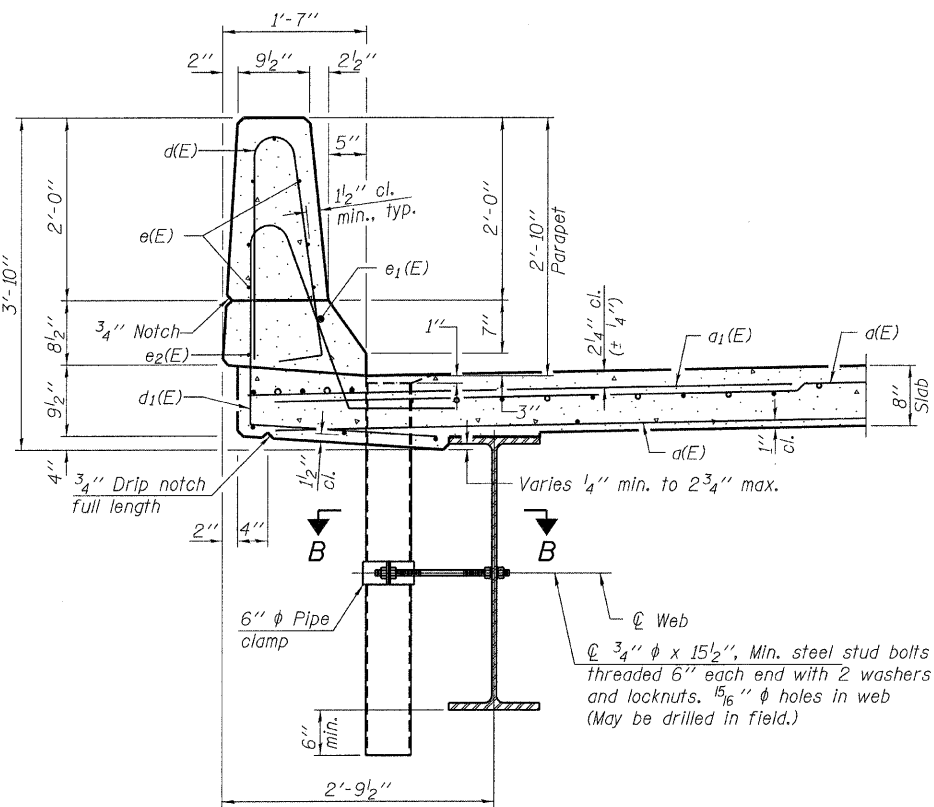
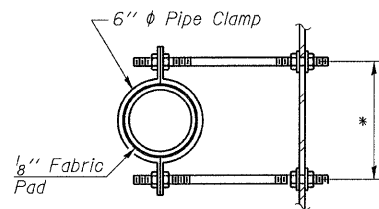


**INSIDE ELEVATION OF EAST PARAPET**  
(Looking East)

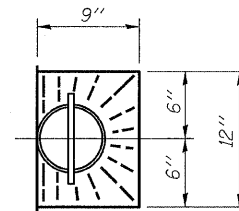
**MIN. BAR LAP**  
(Parapet)  
#4 bars = 2'-0"  
#8 bars = 5'-2"



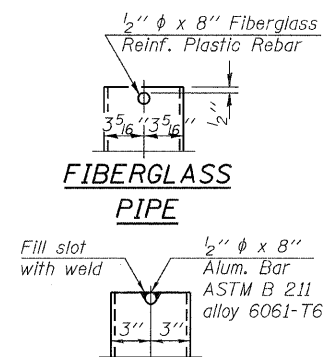
**SECTION THRU PARAPET**



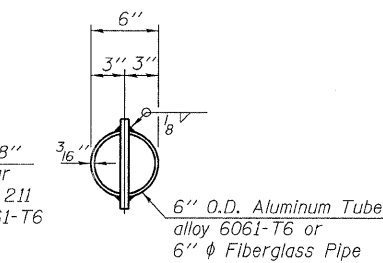
**SECTION B-B**  
\*Dimension as required by Pipe Clamp



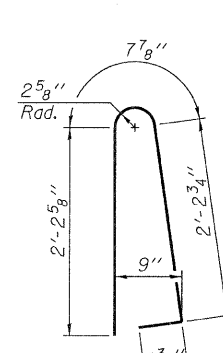
**TOP PLAN**



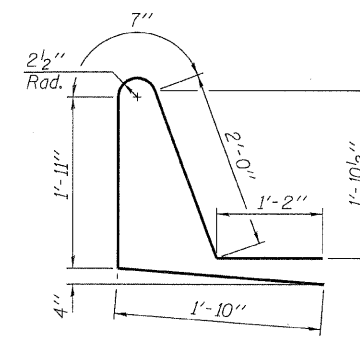
**ALUMINUM TUBE**



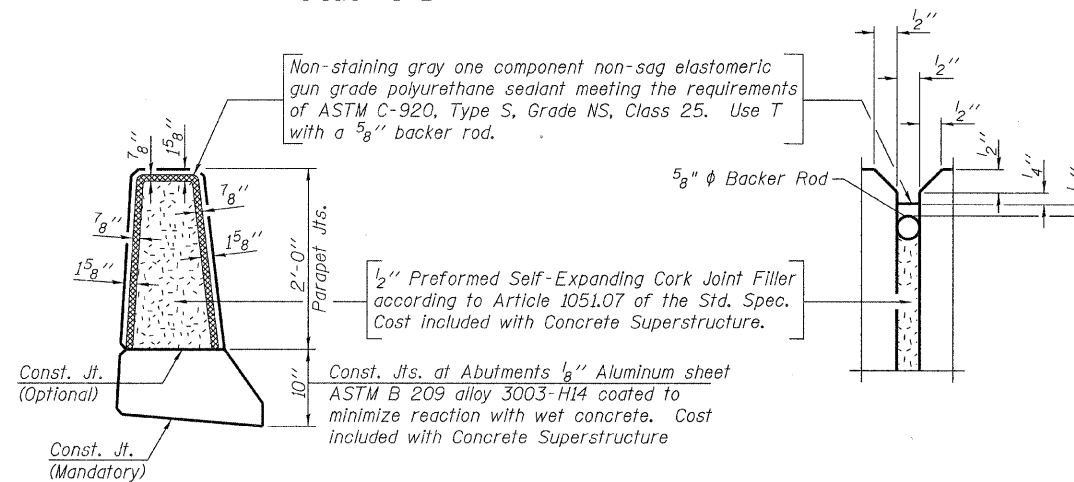
**TOP PLAN**  
(Showing Aluminum Tube)



**BAR d(E)**



**BAR d1(E)**



**PARAPET JOINT DETAILS**

**Notes:**  
The exterior surfaces of the floor drains shall be painted with the finish coat as specified in the special provisions for Cleaning and Painting New Metal Structures. The exterior surfaces of the drains shall be cleaned according to Society of Protective Coatings Spec. SSPC-SP1 prior to painting.  
Fiberglass pipe shall conform to ASTM D 2996, with short-time rupture strength hoop tensile stress of 30,000 p.s.i. minimum.  
Galvanize clamping device according to AASHTO M232. Cost of clamping device and inserts is included with Floor Drains.

**SUPERSTRUCTURE BILL OF MATERIAL**

BAR	NO.	SIZE	LENGTH	SHAPE
d(E)	456	#5	17'-1"	U
a1(E)	266	#6	6'-6"	U
b(E)	114	#5	27'-7"	U
b1(E)	128	#5	21'-4"	U
d(E)	170	#5	5'-7"	U
d1(E)	170	#5	7'-6"	U
e(E)	56	#4	19'-2"	U
e1(E)	6	#8	29'-4"	U
e2(E)	6	#4	27'-2"	U
m(E)	18	#6	17'-3"	U
m1(E)	2	#6	16'-6"	U
m2(E)	24	#6	9'-3"	U
m3(E)	8	#6	5'-6"	U
m4(E)	8	#6	2'-6"	U
s(E)	72	#5	6'-10"	U
s1(E)	64	#4	9'-6"	U
v(E)	64	#5	3'-9"	U
Concrete Superstructures			Cu. Yd.	111.4
Reinforcement Bars, Epoxy Coated			Pound	22,580
Bar Splacers			Each	308

Bars indicated thus 1x3-#4 etc. indicates 1 line of bars with 3 lengths per line.