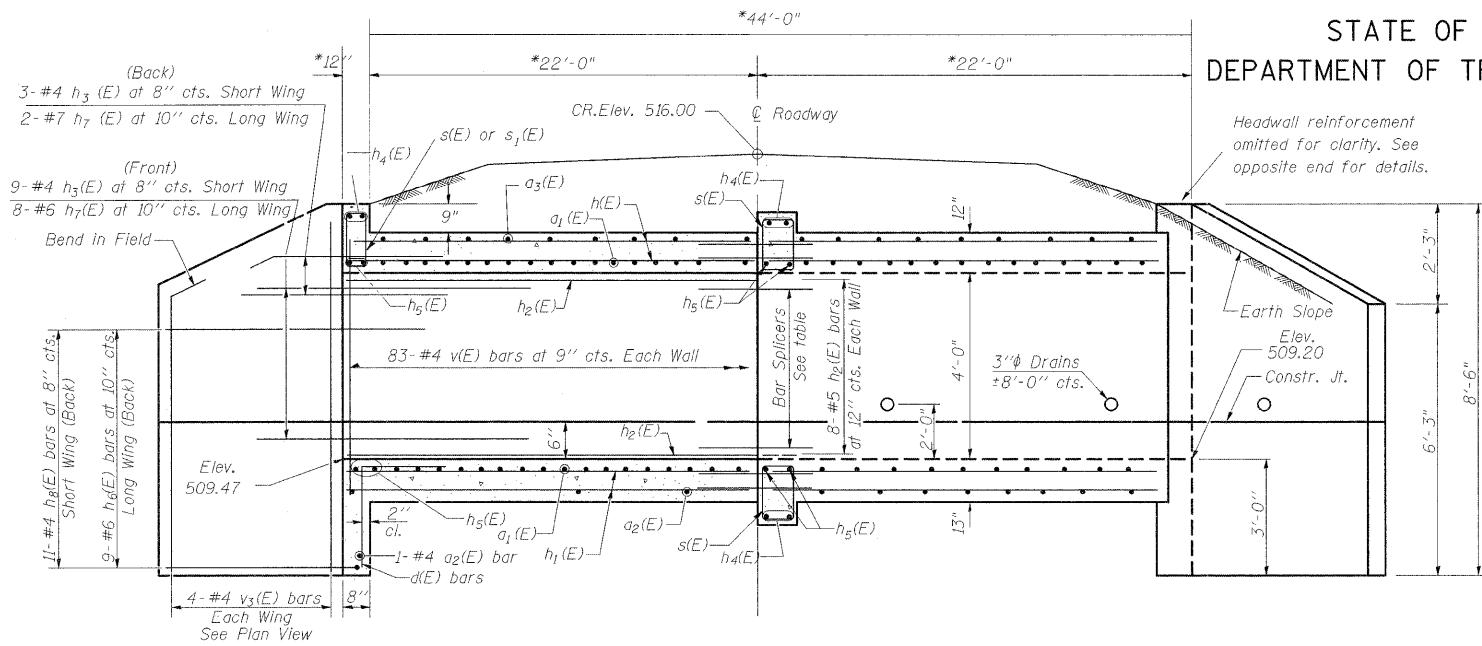


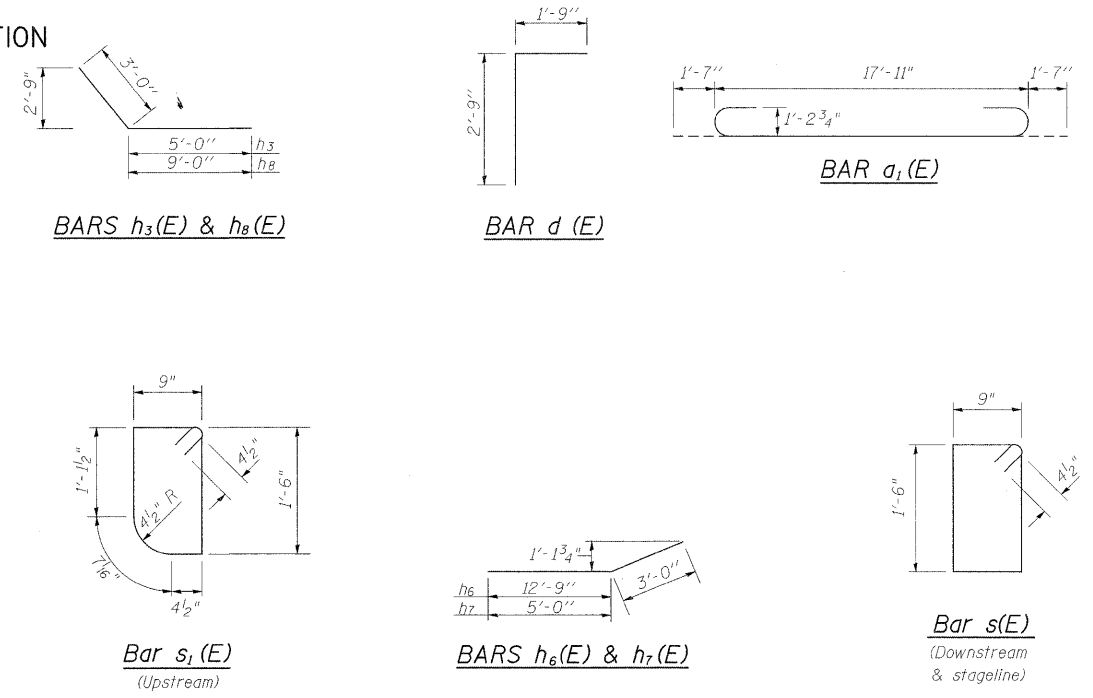
STATE OF ILLINOIS
DEPARTMENT OF TRANSPORTATION



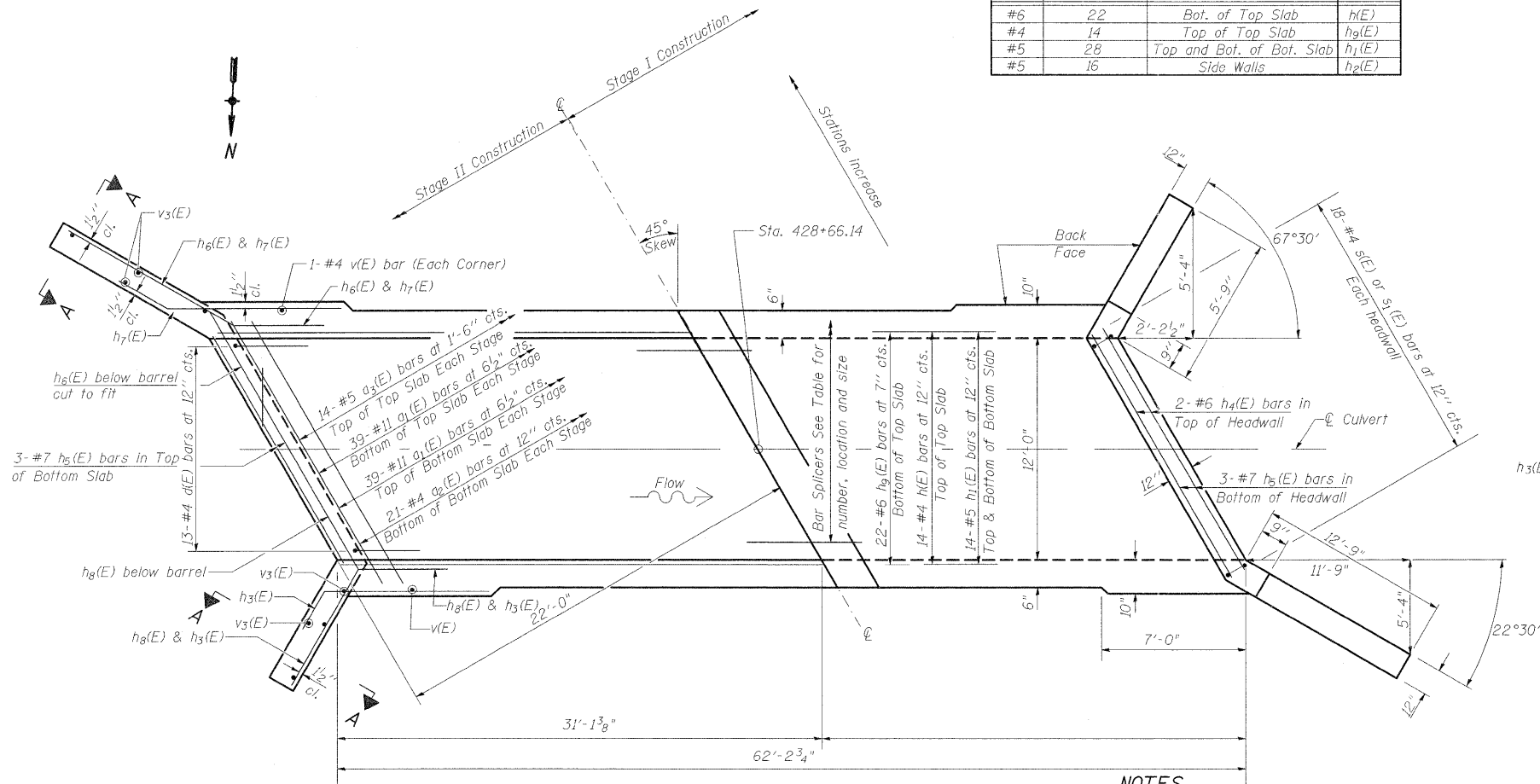
ELEVATION

BAR SPLICERS (E)

Bar Size	No. Assemblies Required	Location	Bar
#6	22	Bot. of Top Slab	h(E)
#4	14	Top of Top Slab	h ₉ (E)
#5	28	Top and Bot. of Bot. Slab	h ₁ (E)
#5	16	Side Walls	h ₂ (E)



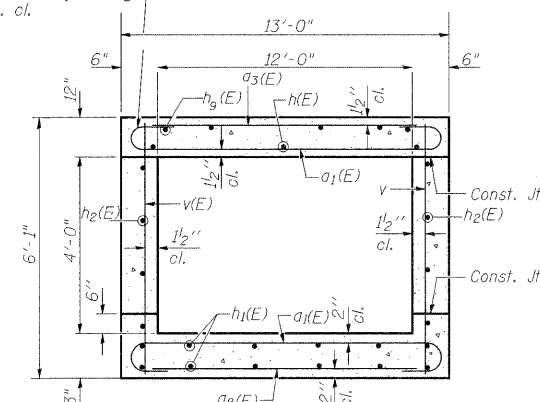
*Dimensions at Rt. L's to \odot Roadway



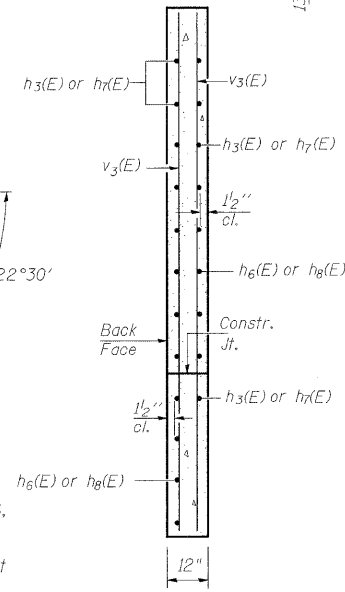
PLAN

NOTES

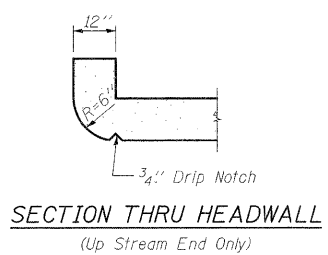
All construction joints shall be bonded.
Reinforcement Bars shall conform to the requirements of ASTM A 706.
Reinforcement Bars designated (E) shall be Epoxy Coated.
A distance of half the length of the wingwall but not less than six feet of the barrel shall be poured monolithically with the wingwalls.
See roadway plans for Temporary Sheet Piling.
See Special Provisions for Temporary Shoring



SECTION THRU BARREL



SECTION A-A



SECTION THRU HEADWALL

DESIGN STRESSES

$f_y = 60,000$ psi
 $f'_c = 3,500$ psi

LOADING HS 20-44 & ALT.

BILL OF MATERIAL

Bar	No.	Size	Length	Shape
a ₁ (E)	156	#11	21'-1"	U
a ₂ (E)	44	#4	17'-8"	—
a ₃ (E)	28	#5	17'-8"	—
d(E)	26	#4	4'-6"	L
h(E)	28	#4	29'-10"	—
h ₁ (E)	56	#5	29'-10"	—
h ₂ (E)	16	#5	29'-10"	—
h ₃ (E)	24	#4	8'-0"	—
h ₄ (E)	8	#6	17'-6"	—
h ₅ (E)	8	#7	17'-6"	—
h ₆ (E)	18	#6	15'-9"	—
h ₇ (E)	20	#6	8'-0"	—
h ₈ (E)	22	#4	12'-0"	—
h ₉ (E)	44	#6	29'-10"	—
s(E)	54	#4	5'-3"	□
s ₁ (E)	18	#4	5'-1"	□
v(E)	166	#4	5'-9"	—
v ₃ (E)	16	#4	8'-2"	—
Concrete Box Culverts			Cu. Yd.	87.6
Reinforcement Bars, Epoxy Coated			Pound	25,800
Bar Splicers			Each	80
Removal of Existing Structures			Each	1
Temporary Shoring			Each	1
Temporary Sheet Piling			Sq. Ft.	397

REVISIONS

REVISIONS	DATE
DRAWN	2-04
REVISED	5-09 SHT CELL
REVISED	
REVISED	

BASED ON: SSB-H-L 6-1-2000