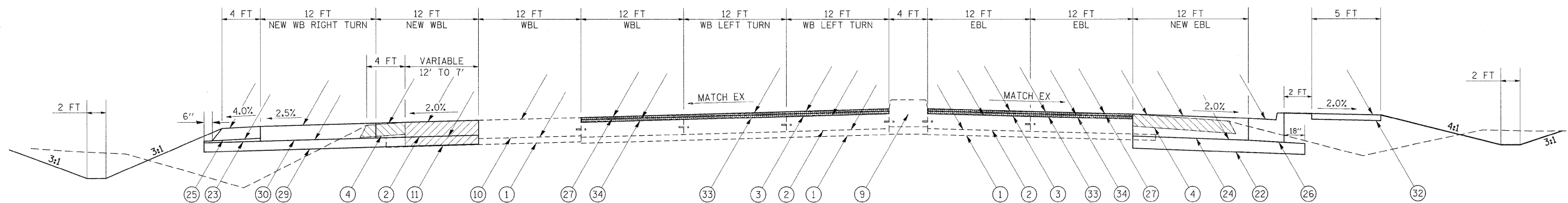


TYPICAL SECTION #9

ADDITIONAL LANES WITH RESURFACING

WILLIAMSON COUNTY
FAP 331 (IL 13)
(LOOKING EAST)

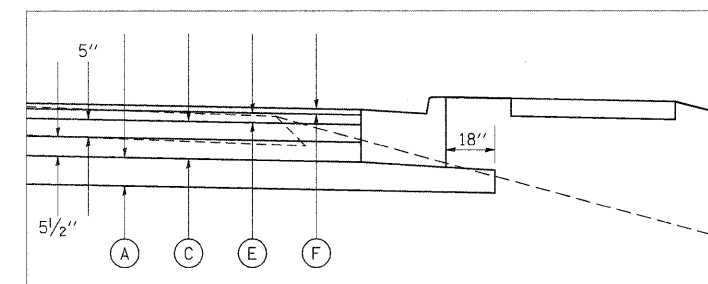


TO BE USED:
STA 845+66.55 TO STA 846+74.10

LEGEND

- | | |
|--|---|
| <ul style="list-style-type: none"> ① EXISTING SUBBASE GRANULAR MATERIAL, TYPE A 4" ② EXISTING PCC PAVEMENT 10" ③ EXISTING HOT-MIX ASPHALT OVERLAY 3 3/4" ④ EXISTING HOT-MIX ASPHALT SHOULDER 8" ⑤ EXISTING CONCRETE MEDIAN SURFACE 4" ⑥ EXISTING COMBINATION C&G TYPE B-6.12 ⑦ EXISTING BARRIER CURB, SPECIAL ⑧ EXISTING COMBINATION C&G TYPE B-6.24 ⑨ EXISTING SOLID MEDIAN, SB-6.06 ⑩ EXISTING PCC PAVEMENT 13" ⑪ EXISTING SUBBASE GRANULAR MATERIAL, TYPE A 7" | <ul style="list-style-type: none"> ⑫ PROPOSED HOT-MIX ASPHALT SURFACE REMOVAL, 1 1/2" ⑬ PROPOSED SUBBASE GRANULAR MATERIAL, TYPE A 8" ⑭ PROPOSED SUBBASE GRANULAR MATERIAL, TYPE C ⑮ PROPOSED HOT-MIX ASPHALT PAVEMENT (FULL-DEPTH), 14 3/4" ⑯ PROPOSED HOT-MIX ASPHALT SHOULDERS, 8" ⑰ PROPOSED COMBINATION CONCRETE CURB & GUTTER, TYPE B-6.24 ⑱ PROPOSED POLYMERIZED HOT-MIX ASPHALT SURFACE COURSE, MIX "E", N105, 1 1/2" ⑲ PROPOSED CONCRETE MEDIAN SURFACE 4" ⑳ PROPOSED SUBBASE GRANULAR MATERIAL, TYPE A 6" ㉑ PROPOSED PORTLAND CEMENT CONCRETE PAVEMENT 10" ㉒ PROPOSED CONCRETE MEDIAN, TYPE SB-6.06 ㉓ PROPOSED PORTLAND CEMENT CONCRETE SIDEWALK, 5" ㉔ PROPOSED HOT-MIX ASPHALT SURFACE REMOVAL, 3 1/4" ㉕ PROPOSED POLYMERIZED LEVELING BINDER (MACHINE METHOD), N105, 1 3/4" |
|--|---|
-
- | | |
|--|--|
| <ul style="list-style-type: none"> PROPOSED PAVEMENT REMOVAL PROPOSED PAVED SHOULDER REMOVAL PROPOSED COMBINATION C&G REMOVAL PROPOSED HMA SURFACE REMOVAL | <ul style="list-style-type: none"> PROPOSED MEDIAN REMOVAL PROPOSED MEDIAN SURFACE REMOVAL |
|--|--|

PAVING DETAIL



- (A) PROPOSED SUBBASE GRANULAR MATERIAL, TYPE A 8"
- (B) PROPOSED SUBBASE GRANULAR MATERIAL, TYPE C
- (C) HOT-MIX ASPHALT BINDER COURSE, N90, IL-19.0 *
- (D) HOT-MIX ASPHALT SURFACE COURSE, MIX C, N70 3" MAX *
- (E) POLYMERIZED HMA BINDER COURSE, N105, IL-19.0, 2 3/4" *
- (F) POLYMERIZED HMA SURFACE COURSE, MIX E, N105, 1 1/2"

* FOR INFORMATION ONLY - NOT PAY ITEMS
SEE MIX DESIGN TABLES FOR MORE INFORMATION

FILE NAME =	USER NAME = thomashf	DESIGNED -	REVISED -	STATE OF ILLINOIS DEPARTMENT OF TRANSPORTATION	TYPICAL SECTIONS FAP 331 (IL 13)	DRAWN -	REVISED -	F.A.P. RTE.	SECTION	COUNTY	TOTAL SHEETS	SHEET NO.
ci:\pwork\pwork\thomashf\ad0157472\78155-sh1-misc.dgn		CHECKED -	REVISED -			331	(IX-1R-1,RS-2,N-2,TS-3	WILLIAMSON	167	16		
PLOT SCALE = 50.0000' / IN.		DATE -	REVISED -			CONTRACT NO. 78155			ILLINOIS FED. AID PROJECT			
PLOT DATE = 4/19/2011						SCALE: SHEET NO. OF SHEETS STA. TO STA.						