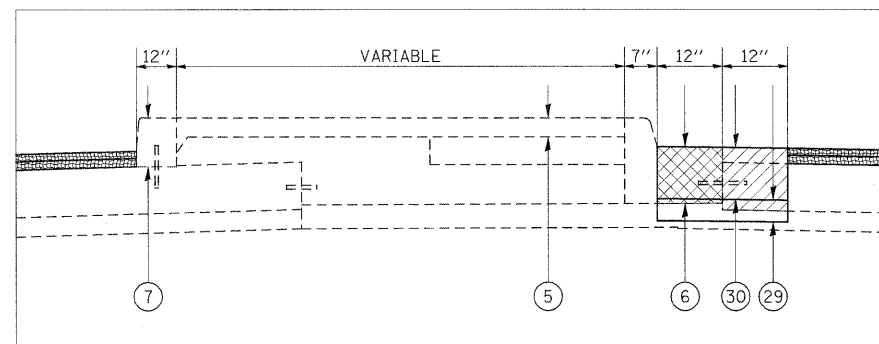


MEDIAN DETAIL

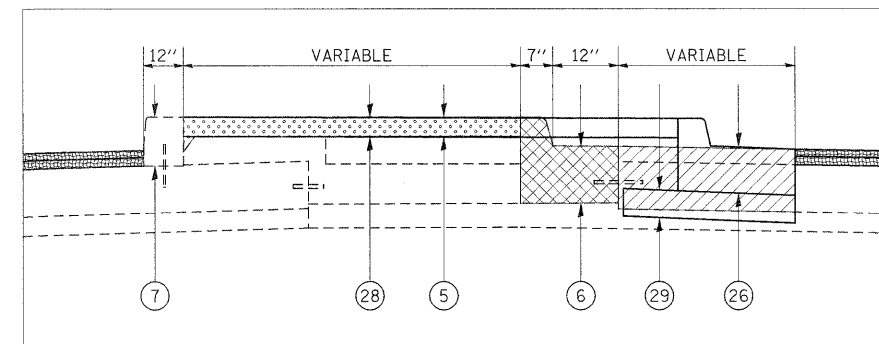


TO BE USED:  
STA 848+31.00 TO STA 848+70.00

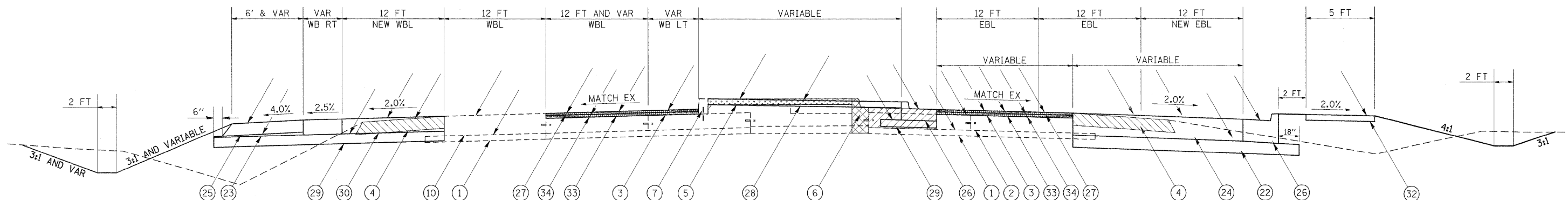
TYPICAL SECTION #11  
ADDITIONAL LANES WITH RESURFACING

WILLIAMSON COUNTY  
FAP 331 (IL 13)  
(LOOKING EAST)

MEDIAN DETAIL



TO BE USED:  
STA 848+70.00 TO STA 850+97.00

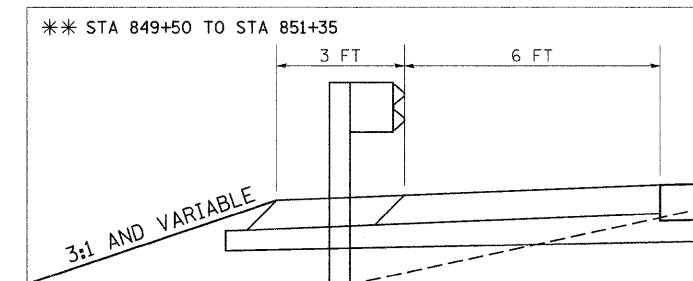


TO BE USED:  
STA 848+31.00 TO STA 850+97.00\*\*

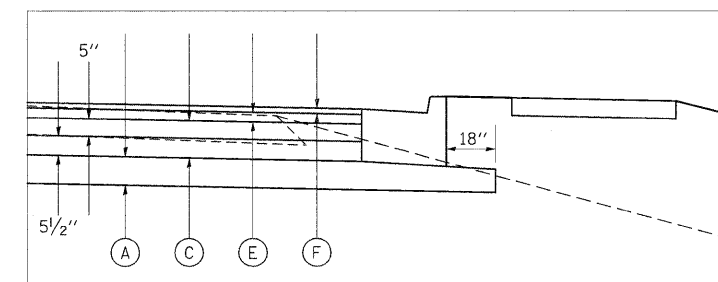
LEGEND

- |   |   |
|---|---|
| ① EXISTING SUBBASE GRANULAR MATERIAL, TYPE A 4" | ②① PROPOSED HOT-MIX ASPHALT SURFACE REMOVAL, 1/2"                           |
| ② EXISTING PCC PAVEMENT 10"                     | ②② PROPOSED SUBBASE GRANULAR MATERIAL, TYPE A 8"                            |
| ③ EXISTING HOT-MIX ASPHALT OVERLAY 3/4"         | ②③ PROPOSED SUBBASE GRANULAR MATERIAL, TYPE C                               |
| ④ EXISTING HOT-MIX ASPHALT SHOULDER 8"          | ②④ PROPOSED HOT-MIX ASPHALT PAVEMENT (FULL-DEPTH), 14 3/4"                  |
| ⑤ EXISTING CONCRETE MEDIAN SURFACE 4"           | ②⑤ PROPOSED HOT-MIX ASPHALT SHOULDERS, 8"                                   |
| ⑥ EXISTING COMBINATION C&G TYPE B-6.12          | ②⑥ PROPOSED COMBINATION CONCRETE CURB & GUTTER, TYPE B-6.24                 |
| ⑦ EXISTING BARRIER CURB, SPECIAL                | ②⑦ PROPOSED POLYMERIZED HOT-MIX ASPHALT SURFACE COURSE, MIX "E", N105, 1/2" |
| ⑧ EXISTING COMBINATION C&G TYPE B-6.24          | ②⑧ PROPOSED CONCRETE MEDIAN SURFACE 4"                                      |
| ⑨ EXISTING SOLID MEDIAN, SB-6.06                | ②⑨ PROPOSED SUBBASE GRANULAR MATERIAL, TYPE A 6"                            |
| ⑩ EXISTING PCC PAVEMENT 13"                     | ③⑩ PROPOSED PORTLAND CEMENT CONCRETE PAVEMENT 10"                           |
| ⑪ EXISTING SUBBASE GRANULAR MATERIAL, TYPE A 7" | ③① PROPOSED CONCRETE MEDIAN, TYPE SB-6.06                                   |
| PROPOSED PAVEMENT REMOVAL                       | ③② PROPOSED PORTLAND CEMENT CONCRETE SIDEWALK, 5"                           |
| PROPOSED PAVED SHOULDER REMOVAL                 | ③③ PROPOSED HOT-MIX ASPHALT SURFACE REMOVAL, 3/4"                           |
| PROPOSED COMBINATION C&G REMOVAL                | ③④ PROPOSED POLYMERIZED LEVELING BINDER (MACHINE METHOD), N105, 1 3/4"      |
| PROPOSED HMA SURFACE REMOVAL                    | PROPOSED MEDIAN REMOVAL   |
|   | PROPOSED MEDIAN SURFACE REMOVAL   |

SHOULDER DETAIL



PAVING DETAIL



- |   |
|---|
| Ⓐ PROPOSED SUBBASE GRANULAR MATERIAL, TYPE A 8"         |
| Ⓑ PROPOSED SUBBASE GRANULAR MATERIAL, TYPE C            |
| Ⓒ HOT-MIX ASPHALT BINDER COURSE, N90, IL-19.0*          |
| Ⓓ HOT-MIX ASPHALT SURFACE COURSE, MIX C, N70 3" MAX*    |
| Ⓔ POLYMERIZED HMA BINDER COURSE, N105, IL-19.0, 2 3/4"* |
| Ⓕ POLYMERIZED HMA SURFACE COURSE, MIX E, N105, 1/2"     |

\* FOR INFORMATION ONLY - NOT PAY ITEMS  
SEE MIX DESIGN TABLES FOR MORE INFORMATION

FILE NAME =	USER NAME = thomashf	DESIGNED -	REVISED -	<b>STATE OF ILLINOIS DEPARTMENT OF TRANSPORTATION</b>	<b>TYPICAL SECTIONS FAP 331 (IL 13)</b>	F.A.P. RTE.	SECTION	COUNTY	TOTAL SHEETS	SHEET NO.	
c:\pwork\pwork\thomashf\d0157472\78155-sht-misc.dgn	5-sht-misc.dgn	DRAWN -	REVISED -			331	(1X-1R-1,RS-2,N-2,TS-3	WILLIAMSON	167	18	
PLOT SCALE = 50.0000' / IN.		CHECKED -	REVISED -			SCALE:		SHEET NO. OF SHEETS	STA. TO STA.	CONTRACT NO. 78155	
PLOT DATE = 4/19/2011		DATE -	REVISED -			ILLINOIS FED. AID PROJECT					