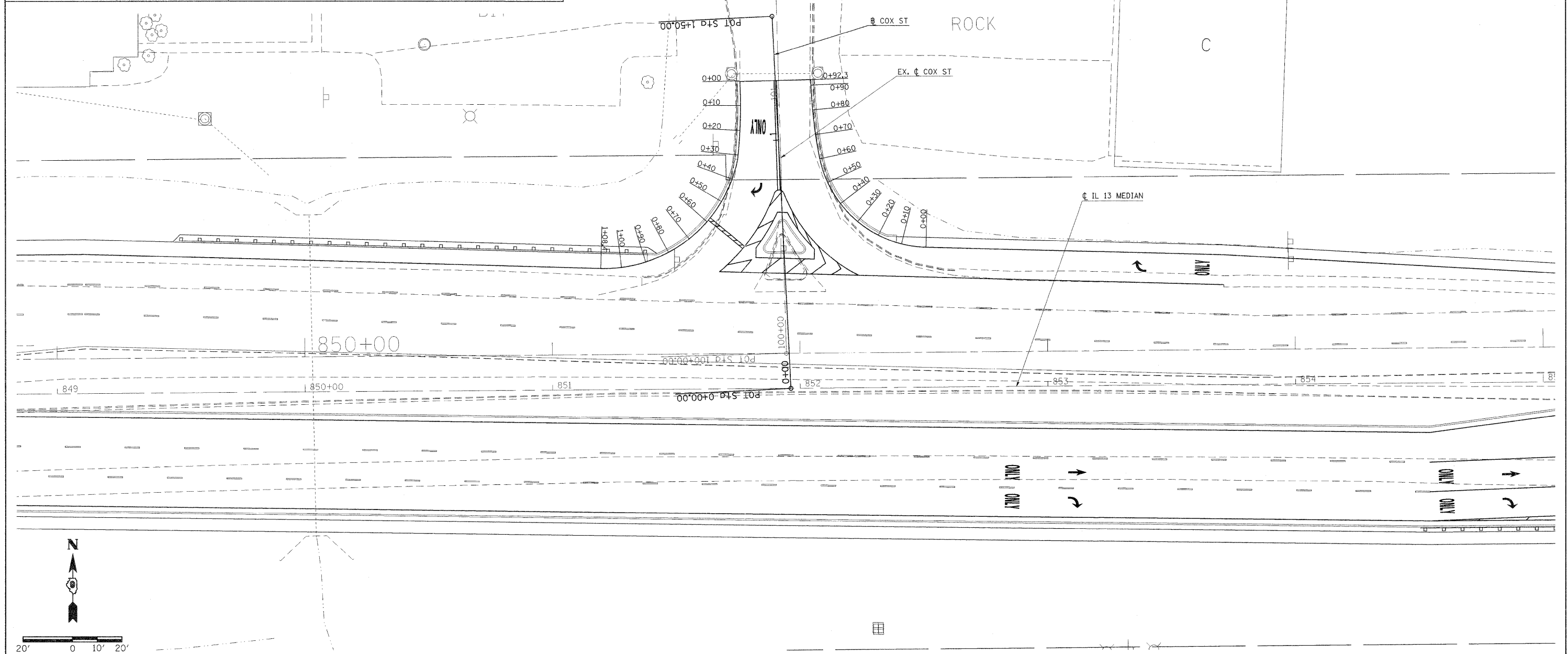


STATIONING ALONG COX ST	OFFSET TO E.P.	EDGE OF PAV'T. ELEV.	STATIONING ALONG ILLINOIS 13 MEDIAN	OFFSET TO E.P.	DISTANCE ALONG RADIUS	STATIONING ALONG ILLINOIS 13 MEDIAN	OFFSET TO E.P.	EDGE OF PAV'T. ELEV.	STATIONING ALONG COX ST	OFFSET TO E.P.	DISTANCE ALONG RADIUS
	FEET	FEET		FEET	FEET		FEET	FEET		FEET	FEET
LT. 1+24.66	14.3	454.58									
LT. 1+14.66	14.6	454.93			10				LT. 852+51.18	56.3	456.81
LT. 1+04.69	15.3	455.28			10				LT. 852+41.31	57.7	456.82
LT. 0+94.77	16.5	455.63			10						456.83
LT. 0+85.24	19.5	455.98			10						456.52
LT. 0+76.45	24.2	456.33			10						456.21
LT. 0+68.67	30.5	456.68	LT. 851+62.68	67.3	10						455.90
LT. 0+62.14	38.0	457.03	LT. 851+51.55	60.5	10						455.59
LT. 0+57.09	46.6	457.38	LT. 851+47.21	55.0	10						455.28
		457.48	LT. 851+37.98	51.2	10						454.97
		457.58	LT. 851+28.21	49.2	10						454.59
			LT. 851+19.81	48.8	8.4						



FILE NAME =	USER NAME = knights	DESIGNED -	REVISED -	STATE OF ILLINOIS DEPARTMENT OF TRANSPORTATION	GEOMETRICS	F.A.P. RTE.	SECTION	COUNTY	TOTAL SHEETS	SHEET NO.
c:\pwork\pwork\knights\0157472\78155-shr-geometrics.dgn	DRAWN -	REVISED -	331			(1X-1)R-1,RS-2,N-2,TS-3	WILLIAMSON	167	75	
PLOT SCALE = 1/8" = 1' IN.	CHECKED -	REVISED -	CONTRACT NO. 78155							
PLOT DATE = 3/22/2011	DATE -	REVISED -	ILLINOIS FED. AID PROJECT							