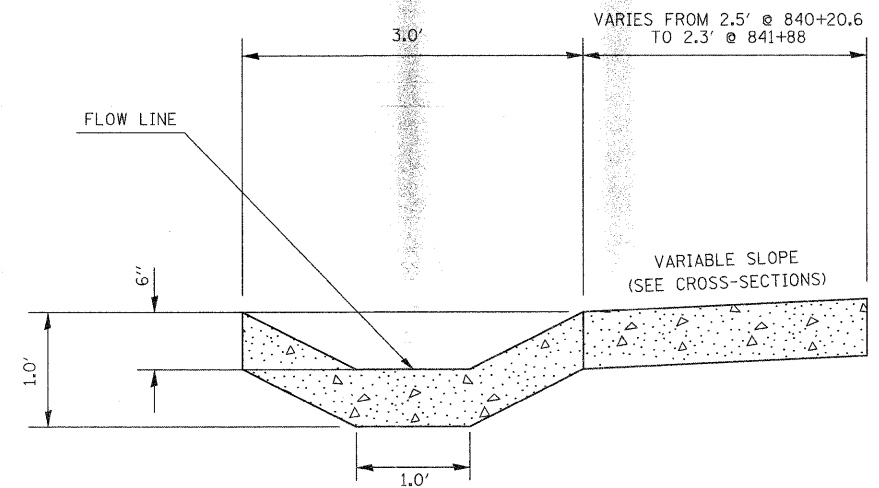


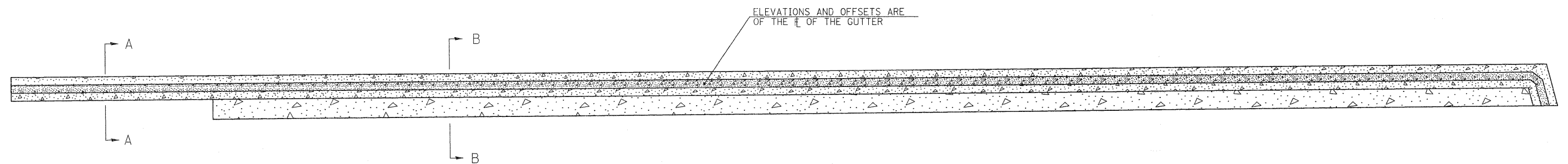
SECTION A-A

TO BE USED: STA 839+95 TO 840+20.6 (IL 13 MED)



SECTION B-B

TO BE USED: STA 840+20.6 TO 840+90.25 (IL 13 MED)



PLAN VIEW

STA 839+95 RT TO 840+90.25 RT (IL 13 MED)

| STATION   | OFFSET | FLOW LINE ELEVATION |
|-----------|--------|---------------------|
| 839+95.00 | 79.27  | 453.21 RT           |
| 840+00.00 | 79.27  | 453.26 RT           |
| 840+50.00 | 79.27  | 453.41 RT           |
| 841+00.00 | 79.24  | 453.83 RT           |
| 841+50.00 | 79.22  | 454.51 RT           |
| 841+75.19 | 79.21  | 454.98 RT           |
| 841+80.13 | 79.21  | 455.17 RT           |
| 841+85.30 | 79.21  | 455.19 RT           |
| 841+89.57 | 81.04  | 455.65 RT           |

|  |                      |            |           |
|--|----------------------|------------|-----------|
| FILE NAME =  | USER NAME = knightsm | DESIGNED - | REVISED - |
| c:\pwwork\pwwork\knightsm\d0157472\78155-aht-details.dgn |                      | DRAWN -    | REVISED - |
| PLOT SCALE = 50.0000' / IN.                              |                      | CHECKED -  | REVISED - |
| PLOT DATE = 3/22/2011                                    |                      | DATE -     | REVISED - |

STATE OF ILLINOIS  
DEPARTMENT OF TRANSPORTATION

DETAIL - TYPE A GUTTER, SPECIAL

SCALE: SHEET NO. OF SHEETS STA. TO STA.

|                           |                        |            |              |           |
|---------------------------|------------------------|------------|--------------|-----------|
| F.A.P. RTE.               | SECTION                | COUNTY     | TOTAL SHEETS | SHEET NO. |
| 331                       | (1X-1R-1,RS-2,N-2,TS-3 | WILLIAMSON | 167          | 83        |
| CONTRACT NO. 78155        |                        |            |              |           |
| ILLINOIS FED. AID PROJECT |                        |            |              |           |