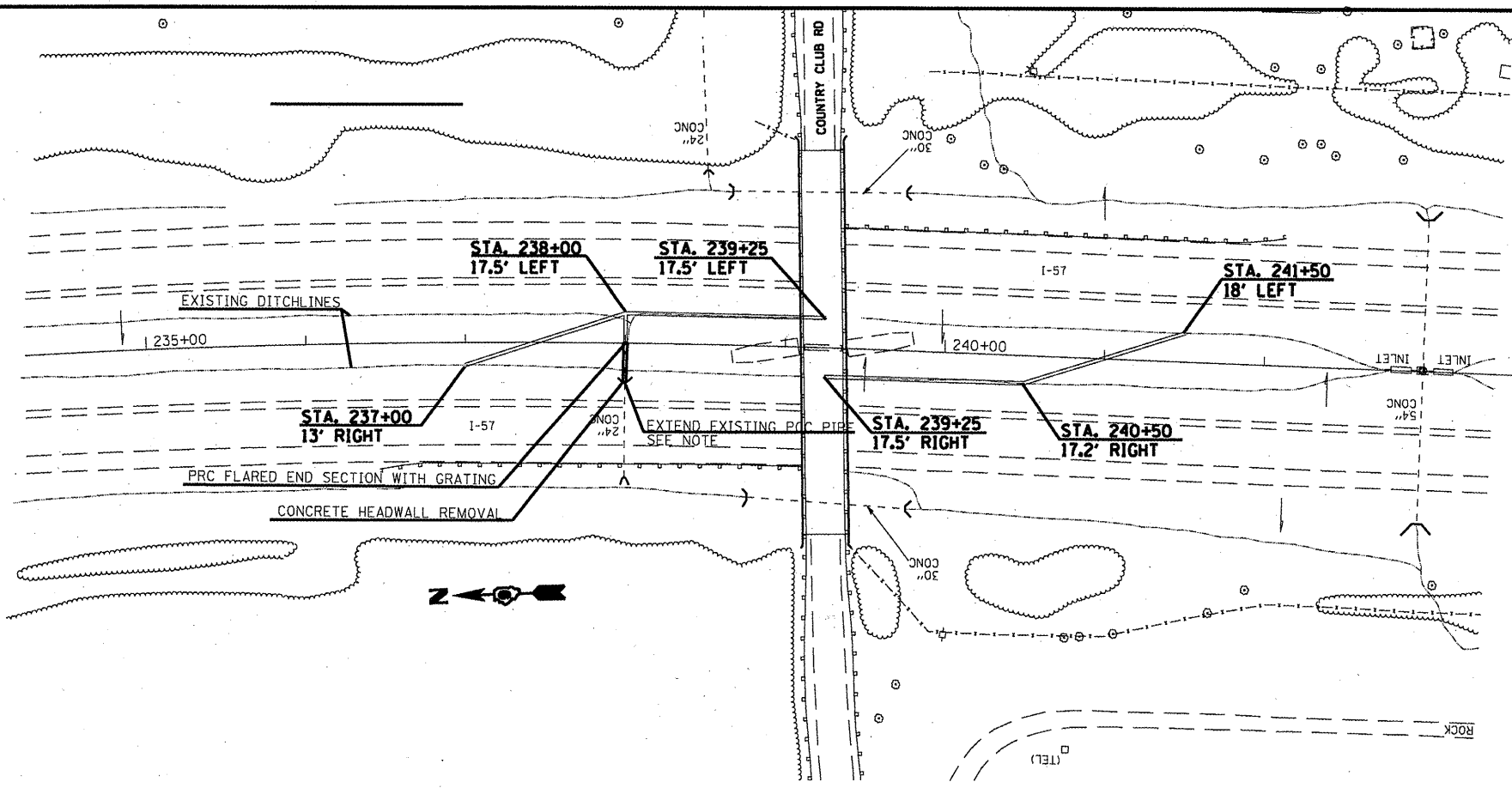


SN 028-0058 (FRANKLIN COUNTY)



STATION	EXISTING FLOWLINE		PROPOSED FLOWLINE	
	LEFT DITCH	RIGHT DITCH	LEFT DITCH	RIGHT DITCH
237+00	395.09	394.89	395.09	394.89
237+25	395.06	394.91	394.88	394.88
237+50	395.00	394.80	394.67	394.67
237+75	394.98	394.51	394.45	394.45
238+00	394.24	394.24	394.24	NA
238+25	395.13	394.77	394.7925	NA
238+50	395.33	395.05	395.345	NA
238+75	395.63	395.34	395.8975	NA
239+00	395.74	395.37	396.45	NA
239+25	395.76	395.41	SUMMIT	
239+50	395.69	395.38	NA	395.3
239+75	395.57	395.36	NA	395.14
240+00	395.57	395.20	NA	395.98
240+25	395.57	395.09	NA	395.82
240+50	395.49	395.06	NA	395.66
240+75	395.32	395.02	395.50	395.5
241+00	395.27	395.02	395.34	395.34
241+25	395.10	395.02	395.18	395.18
241+50	395.09	395.02	395.09	395.02

EXISTING FLOWLINE STATION 238+00, 23.9' RIGHT OF CENTERLINE IS 394.24. THIS FLOWLINE SHALL REMAIN AS PER THE CROSS SECTION.