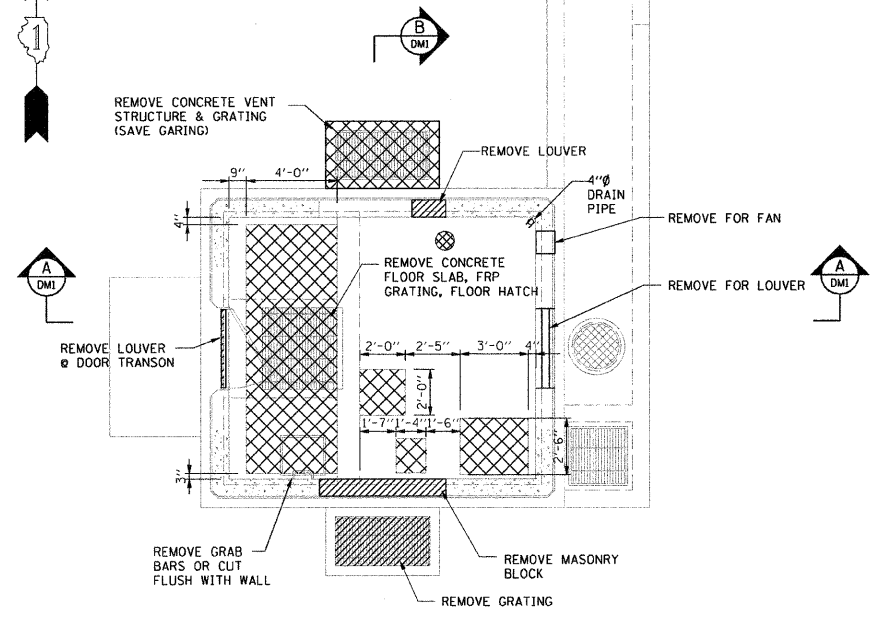
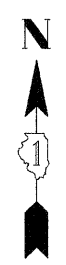
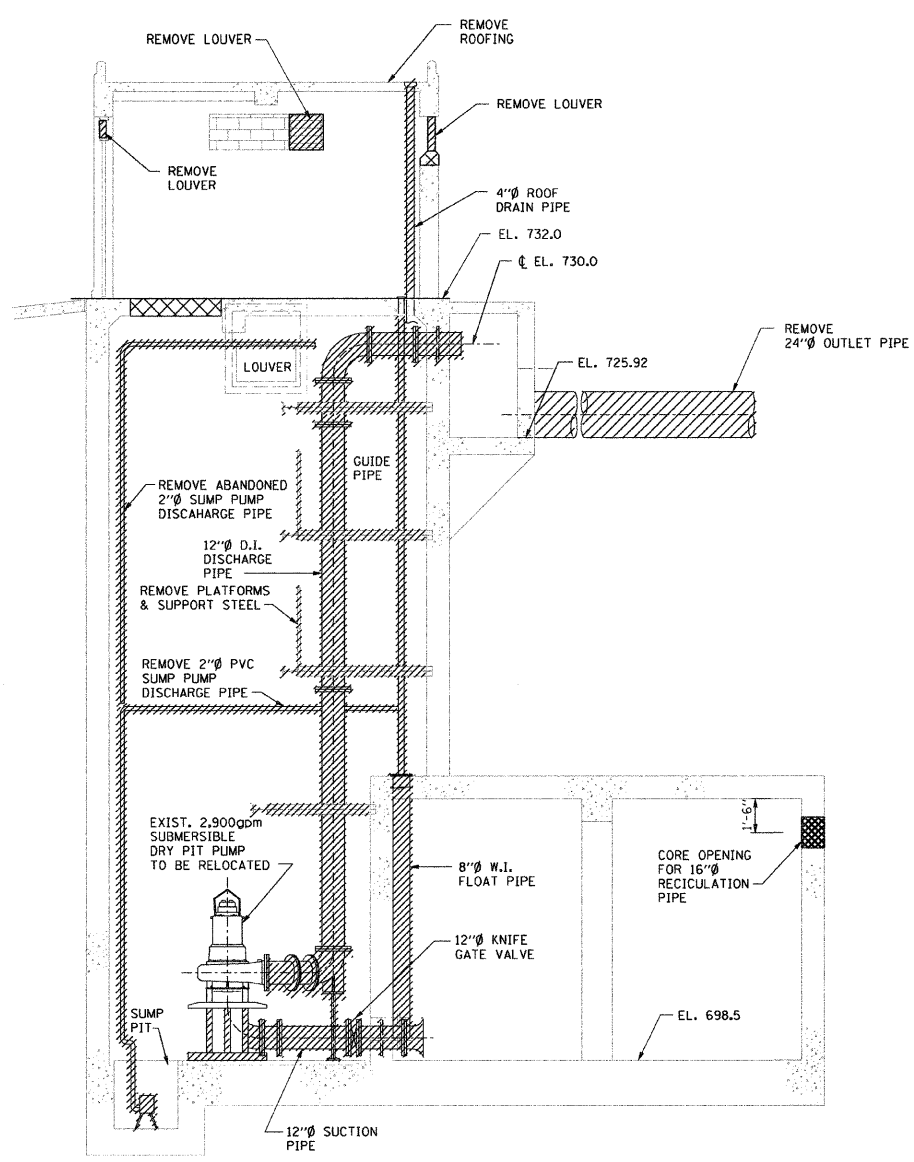


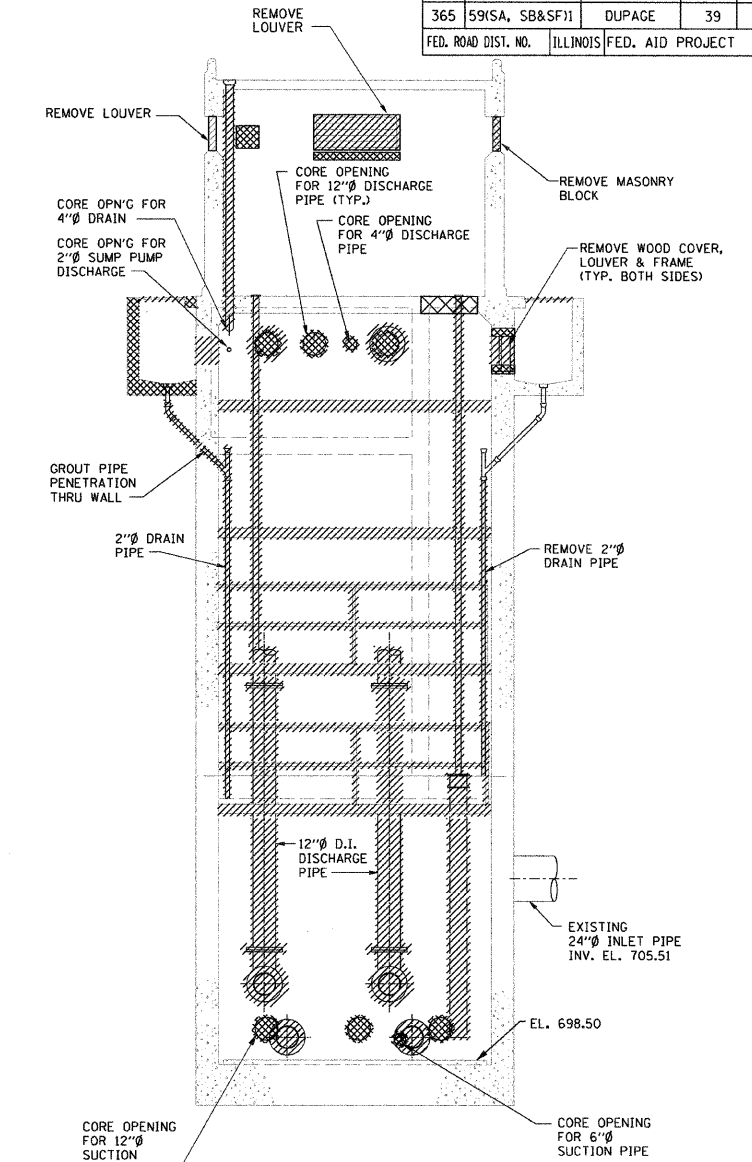
F.A.P. RTE.	SECTION	COUNTY	TOTAL SHEETS	SHEET NO.
365	59(SA, SB&SF)1	DUPAGE	39	6
FED. ROAD DIST. NO.		ILLINOIS FED. AID PROJECT		



PLAN @ EL. 732.00



SECTION A-A

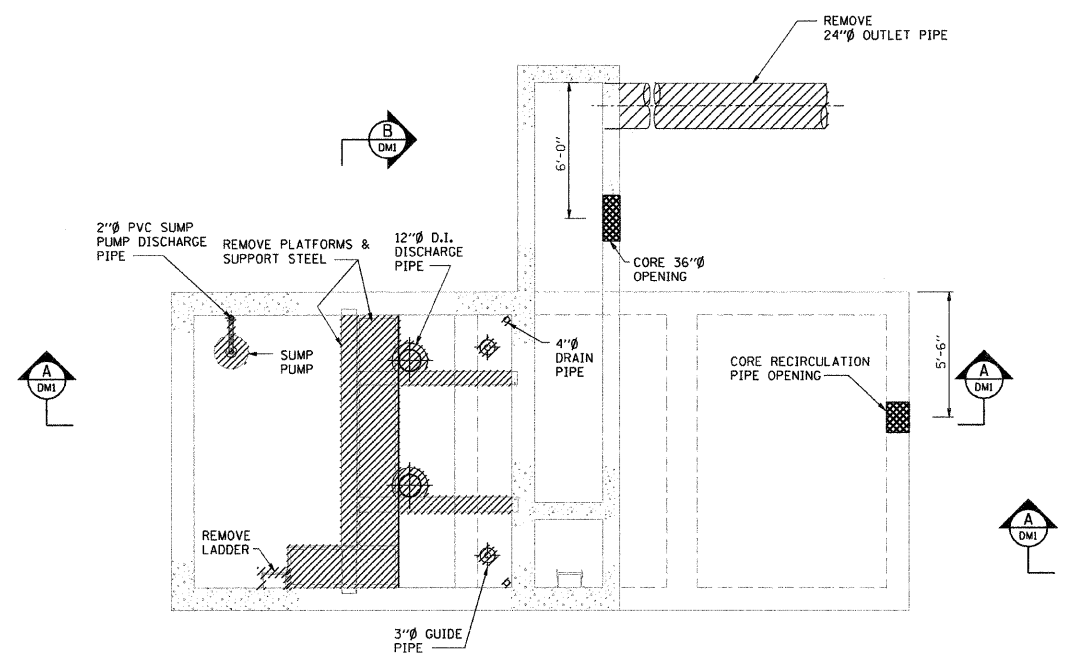


SECTION B-B

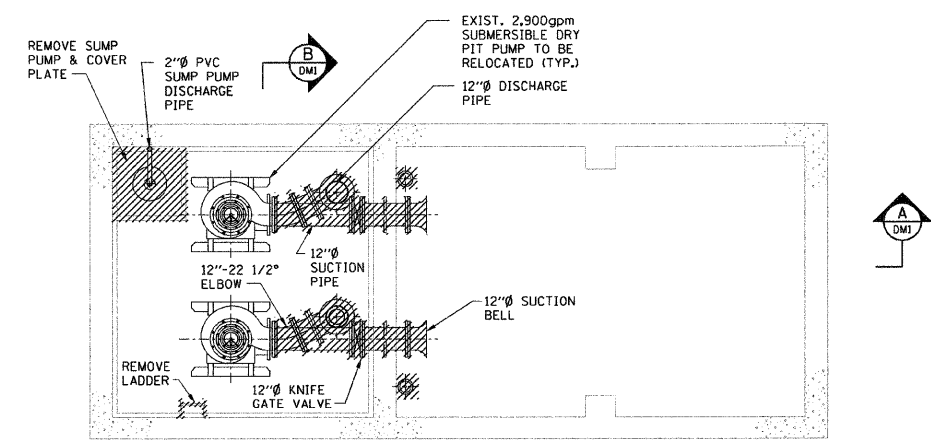
NOTE:
 1. FIELD VERIFY ALL EXISTING CONDITIONS AND DIMENSIONS.
 2. FOR REMOVAL OF EQUIPMENT, REMOVE ALL ASSOCIATED ELECTRICAL AND I&C WIRING AND CONDUIT BACK TO SOURCE. PLUG ALL PIPES AND CONDUIT AT FLOOR OR WALL PENETRATION.
 3. REMOVE ALL HVAC UNITS, DUCT WORK, WIRINGS AND ALL ASSOCIATED COMPONENTS.

LEGEND:

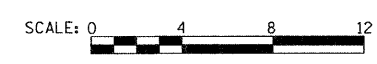
	EQUIPMENT AND OTHER REMOVAL
	CONCRETE REMOVAL



PLAN @ EL. 727.00



PLAN @ EL. 698.50



DM1

REVISIONS	
NAME	DATE

ILLINOIS DEPARTMENT OF TRANSPORTATION

**PUMP STATION NO. 48
REHABILITATION
DEMOLITION PLANS
& SECTIONS**

SCALE: AS SHOWN DRAWN BY: HFF
 DATE: 03-10-11 CHECKED BY: FL

