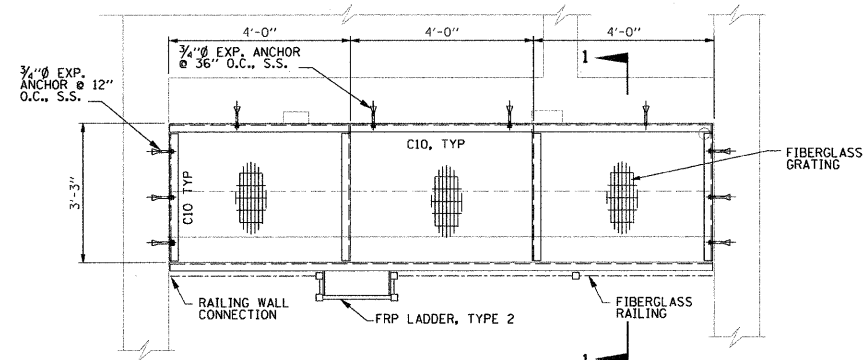
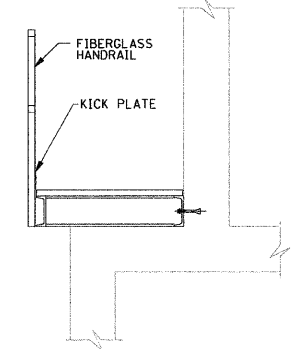


F.A.P. RTE.	SECTION	COUNTY	TOTAL SHEETS	SHEET NO.
365	59(SA, SB&SF)I	DUPAGE	39	10
FED. ROAD DIST. NO.	ILLINOIS	FED. AID PROJECT		



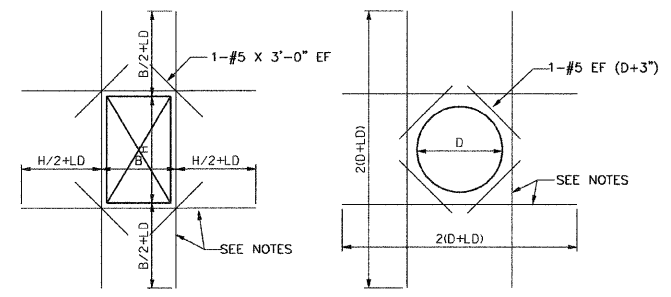
**FIBERGLASS PLATFORM @ EL. 712.0**

SCALE: 0 2 4 FT.



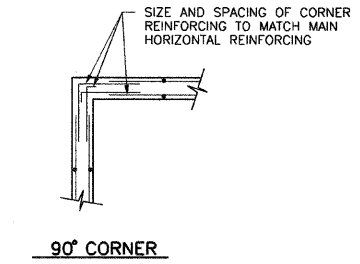
**SECTION 1-1**

SCALE: 0 2 4 FT.

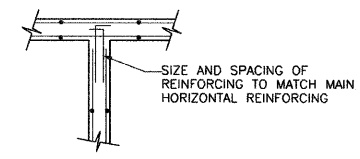


**RECTANGULAR OPENING      CIRCULAR OPENING**

- NOTES:**
1. THESE DETAILS APPLY TO ALL OPENINGS IN CONCRETE WALLS AND SLABS WHEN THE LARGEST OPENING DIMENSION IS GREATER THAN TWO TIMES SECTION THICKNESS OR GREATER THAN REINFORCING SPACING IN THE SECTION, UNLESS OTHERWISE INDICATED IN THE DRAWINGS.
  2. THE AREA OF ADDITIONAL REINFORCING REQUIRED IN EACH FACE ON EACH SIDE OF AN OPENING SHALL EQUAL OR EXCEED ONE-HALF OF THE AREA OF THE INTERCEPTED BARS IN EACH FACE, IN EACH DIRECTION, RESPECTIVELY WITH A MINIMUM OF 1-#5 BAR EACH FACE.
  3. PLACE THE ADD BARS IN THE SAME LAYERS AS THE WALL OR SLAB REINFORCING.
  4. LD=40 X BAR DIAMETER.



**90° CORNER**



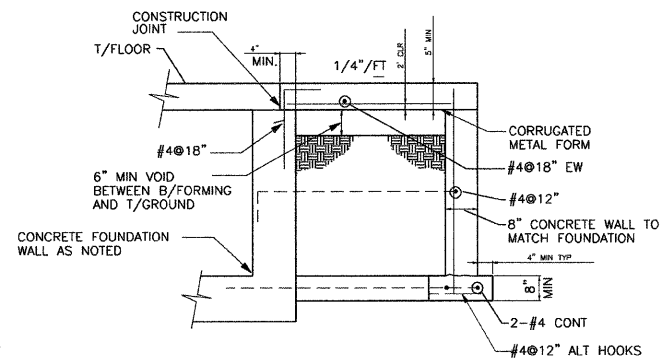
**T-INTERSECTION**

**HORIZONTAL REINFORCEMENT DETAIL (S-2)**

NOT TO SCALE

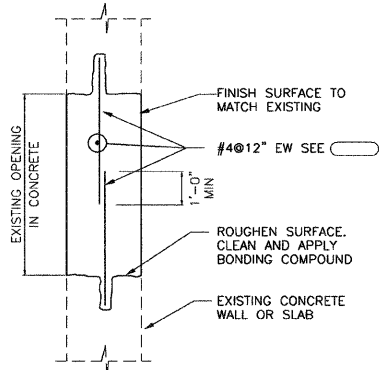
**ADDITIONAL REINFORCEMENT AT OPENINGS IN WALLS AND SLABS DETAIL (S-1)**

NOT TO SCALE



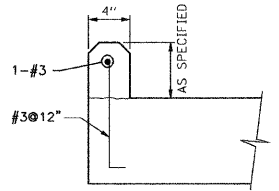
**DOOR STOOP DETAIL (S-3)**

NOT TO SCALE



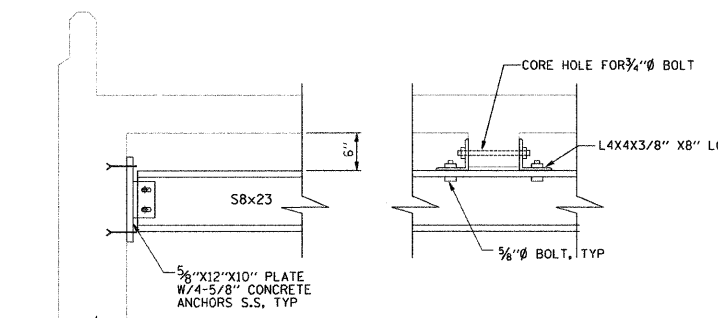
**CONCRETE OPENING PATCH DETAIL (S-4)**

NOT TO SCALE



**4" CURB**

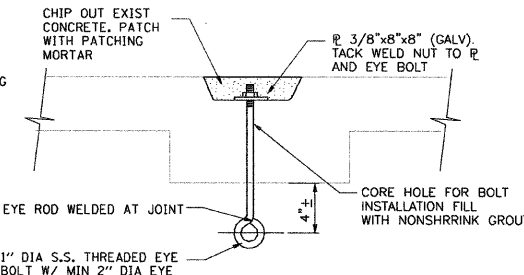
NOT TO SCALE



**END SUPPORT      INTERMEDIATE SUPPORT**

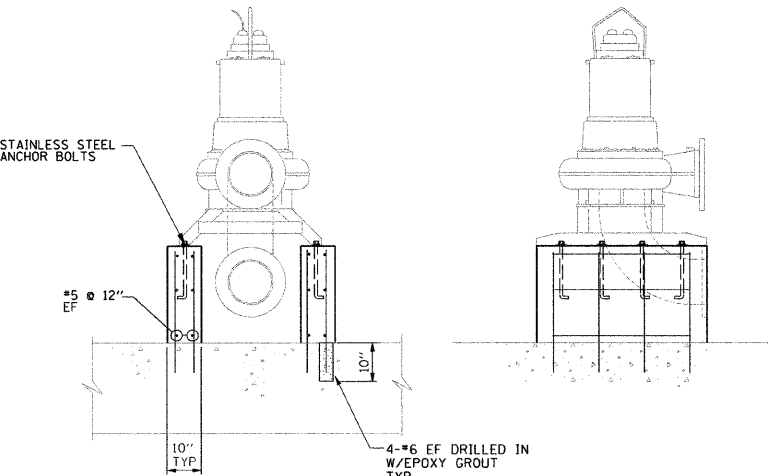
**2T MONORAIL DETAIL (S-8)**

NOT TO SCALE



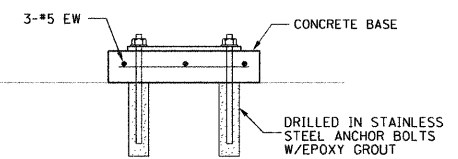
**1/2T HOIST HOOK DETAIL (S-9)**

NOT TO SCALE



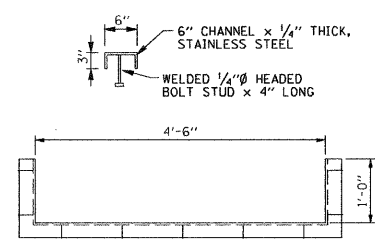
**HIGH LIFT PUMP BASE DETAIL (S-6)**

NOT TO SCALE



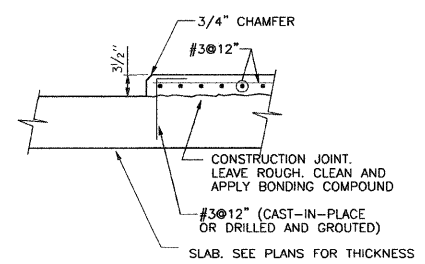
**LOW FLOW PUMP BASE DETAIL (S-7)**

NOT TO SCALE



**WEIR COVER DETAIL (S-10)**

NOT TO SCALE

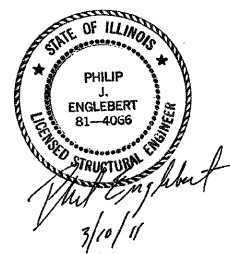


**EQUIPMENT PAD DETAIL (S-11)**

NOT TO SCALE

- NOTES:**
1. USE FOR OPENINGS 4'-0" SQ AND SMALLER WITH DRY FACES BOTH SIDES OR WHERE NOTED.
  2. REINFORCEMENT NOT REQUIRED FOR OPENINGS ≤ 16".

- NOTES:**
1. VERIFY ALL DIMENSIONS AND ANCHOR BOLTS WITH EXISTING EQUIPMENT.
  2. VERIFY ALL DIMENSIONS AND ANCHOR BOLTS WITH EQUIPMENT MANUFACTURERS.



S4

REVISIONS	
NAME	DATE

ILLINOIS DEPARTMENT OF TRANSPORTATION

PUMP STATION NO. 48  
REHABILITATION

**STRUCTURAL DETAILS**

SCALE: AS SHOWN      DRAWN BY: FL  
DATE: 03-10-11      CHECKED BY: PJE

