

F.A.P. RTE.	SECTION	COUNTY	TOTAL SHEETS	SHEET NO.
365	59(SA, SB&SF)1	DUPAGE	39	18
FED. ROAD DIST. NO.		ILLINOIS FED. AID PROJECT		

FAN SCHEDULE										SECTION 15E					
TAG	MANUF.	MODEL	TYPE	SERVICE	AIR FLOW DATA			FAN RPM	DRIVE	SONES	ELECTRICAL DATA				REMARKS
					CFM	ESP (IN WC)	BHP				HP/WATTS	VOLT	PH.	RPM	
EF-1	GREENHECK	CWB 101	CENTRI SIDEWALL	EXHAUST	600	0.25	0.05	950	BELT	3.0	1/4	115	1	1725	1,2,6,10,11,12,13
EF-2	GREENHECK	BSO 180	INLINE CENTRI SIDEWALL	EXHAUST	3000	0.80	1.21	1815	BELT	19.9	2	460	3	1725	1,2,6,7,8,9,11
EF-3	GREENHECK	CWB-121	CENTRI SIDEWALL	EXHAUST	1100	0.80	0.24	1367	BELT	11.9	1/3	115	1	1725	1,2,3,4,5,6,12

- = ALUMINUM CONSTRUCTION.
- = STAINLESS STEEL FAN SHAFT AND FASTENERS.
- = EXPLOSION PROOF MOTOR
- = AMCA TYPE B SPARK RESISTANT CONSTRUCTION.
- = EXPLOSION PROOF INTEGRAL DISCONNECT SWITCH AND INSTALLED IN ACCORDANCE WITH DIVISION 16
- = HI-PRO POLYESTER (HERESITE) COATING ON FAN AND DAMPER.
- = MOTOR COVER ON MOTOR AND BELT.
- = FLEX CONNECTION.
- = VIBRATION ISOLATION HANGING ACCESSORIES.
- = GRAVITY OPERATED DAMPER
- = NEMA 4X INTEGRAL DISCONNECT SWITCH AND INSTALLED IN ACCORDANCE WITH DIVISION 16
- = ALUMINUM BIRDSCREEN
- = MANUFACTURER ALUMINUM WALL GRILLE

ELECTRIC HEATER SCHEDULE															
TAG	MANUF.	MODEL	TYPE	OUTPUT (MBH)	MOUNT. HEIGHT (FT)	AIR DATA		ELECTRICAL DATA			MOTOR DATA		REMARKS		
						CFM	THROW (FT)	AT (F)	KW	VOLT/ *	AMP	HP		VOLT/ *	RPM
EUH-1	MARLEY	JUW500	CORR UNIT	17.06	6'-5"	405		37	5.0	460/3	6.0	1/2	-	1725	1,2,3,4,5
EUH-2	MARLEY	JUW750	CORR UNIT	25.59	6'-5"	485		46	7.5	460/3	9.0	1/2	-	1725	1,2,3,4,5

- = STAINLESS STEEL CORROSION RESISTANCE CONSTRUCTION.
- = NEMA 4X DISCONNECT SWITCH AND INSTALLED IN ACCORDANCE WITH DIVISION
- = CONTROLS AS SPECIFIED.
- = MANUFACTURES MOUNTING ACCESSORIES.
- = WALL MOUNTED THERMOSTAT.

WALL LOUVER SCHEDULE										
TAG	MANUF.	MODEL	SERVICE	CFM	WIDTH (IN)	HEIGHT (IN)	DEPTH (IN)	MAX. APD (IN WC)	MAX. FREE AREA VEL. (FPM)	REMARKS
OAL-1	GREENHECK	ESD-403	INTAKE	600	24	18	4	0.048	522	1,2,3,4,5
OAL-2	GREENHECK	ESD-403	INTAKE	200	40	9	4	--	--	1,2,3,4,5
OAL-3	GREENHECK	ESD-403	INTAKE	2800	42	24	4	0.088	854	1,2,3,4,5
EAL-1	GREENHECK	ESD-403	EXHAUST	3000	42	24	4	0.092	915	1,2,5,6

- = ALUMINUM BIRDSCREEN.
- = EXTENDED SILL.
- = INSULATED BLADE MOTOR OPERATED DAMPER TO BE FURNISHED BY TEMPERATURE CONTROLS CONTRACTOR.
- = EXTERNALLY MOUNTED STAINLESS STEEL REMOVABLE INSECT SCREEN.
- = KYNAR FINISH.
- = GRAVITY OPERATED DAMPER

AIR INLET AND OUTLET SCHEDULE									
TAG	MANUF.	MODEL	SERVICE	MAX. APD (IN. W. C)	MAX. NC	PATTERN	FINISH	MATERIAL	REMARKS
EG-1	AJ MANUF	550 H	EXHAUST	0.10	30	SD	MATTE	SST	

SD = 3/4" BLADE SINGLE DEFLECTION.

ITEM	SIZE	ACTUATOR			CONFIGURATION	REMARKS
		TYPE	VOLTAGE	PH		
DM1	24"x18"	ELECTRIC MOTOR	115	1	SUPPLY	MOTOR OPERATED DAMPER ASSOCIATED WITH LOUVER OAL-1
DM2	40"x9"	ELECTRIC MOTOR	115	1	SUPPLY	MOTOR OPERATED DAMPER ASSOCIATED WITH LOUVER OAL-2
DM3	42"x24"	ELECTRIC MOTOR	115	1	SUPPLY	MOTOR OPERATED DAMPER ASSOCIATED WITH LOUVER OAL-3
DM4	42"x24"	GRAVITY	---	---	EXHAUST	BACK DRAFT DAMPER ASSOCIATED WITH LOUVER EAL-1
DM5	12"x12"	GRAVITY	---	---	EXHAUST	BACK DRAFT DAMPER ASSOCIATED WITH LOUVER EF-3
DM6	12"x12"	GRAVITY	---	---	EXHAUST	BACK DRAFT DAMPER ASSOCIATED WITH LOUVER EF-1

NOTE: MOTOR OPERATED DAMPERS TO BE FURNISHED BY TEMPERATURE CONTROL CONTRACTOR. GRAVITY OPERATED DAMPERS TO BE FURNISHED BY EQUIPMENT SUPPLIER

ELECTRICAL ROOM VENTILATION CONTROL

EXHAUST FAN EF-1 WILL BE CONTROLLED BY THE H-O-A SWITCH WITH THE THERMOSTAT SET AT (80° F, ADJUSTABLE).

AUTO MODE: ON CALL FOR COOLING FROM THERMOSTAT THE STARTER WILL ENERGIZE EF-1 AND MOTOR OPERATED DAMPER (DM1) ASSOCIATED WITH OAL1 WILL OPEN.

OFF MODE: EF-1 STOP AND DM1 CLOSED.

HAND MODE: EF-1 RUN CONTINUOUSLY AND DM1 OPENED.

PUMP ROOM VENTILATION

EXHAUST FAN EF-2 WILL BE CONTROLLED BY THE H-O-A SWITCH WITH THE THERMOSTAT SET AT (85° F, ADJUSTABLE).

AUTO MODE: THE STARTER WILL ENERGIZE EF-2, FAN WILL RUN CONTINUOUSLY AND MOTOR OPERATED DAMPERS (DM2, DM3) WILL OPEN UNDER ANYONE OF THESE FOLLOWING CONDITIONS:

- WHEN THE THERMOSTAT SENSES A ROOM TEMPERATURE ABOVE THE THERMOSTAT SET POINT.
- WHEN THE GAS SENSOR DETECTS COMBUSTIBLE GAS ABOVE THE SETPOINT IN THE PUMP ROOM .
- WHEN THE PUMP ROOM LIGHTS ARE TURNED ON.

OFF MODE: EF-2 STOP AND DM2 AND DM3 CLOSED.

HAND MODE: EF-2 RUN CONTINUOUSLY, DM2 AND DM3 OPENED.

WET WELL VENTILATION CONTROL

EXHAUST FAN EF-3 WILL BE CONTROLLED BY THE H-O-A SWITCH.

AUTO MODE: EF-3 WILL ENERGIZE, FAN WILL RUN CONTINUOUSLY UPON ANY ONE OF THE FOLLOWING CONDITIONS:

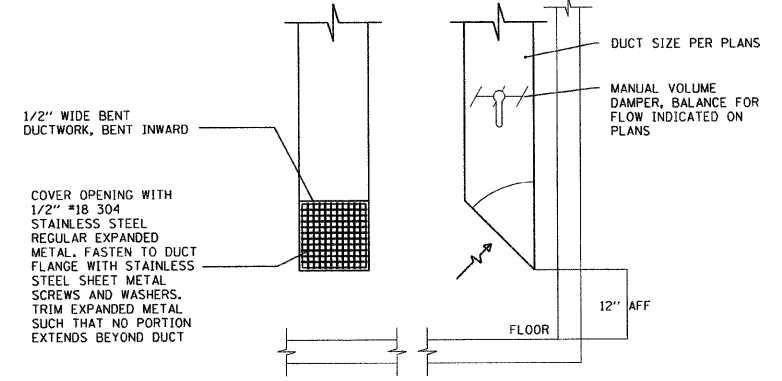
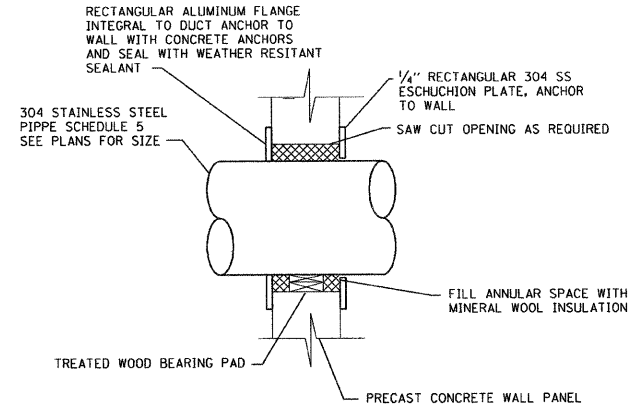
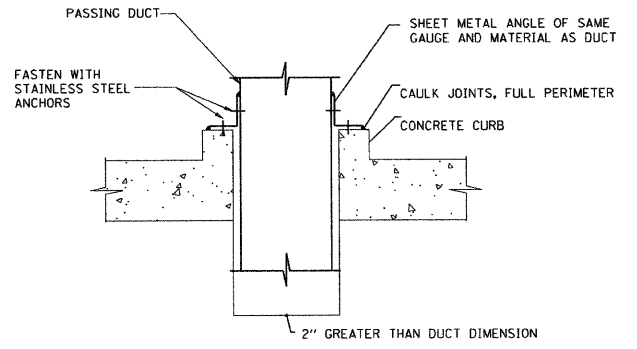
- WHEN THE GAS SENSOR DETECTS COMBUSTIBLE GAS ABOVE SETPOINT IN PUMP ROOM OR WETWELL.
- WHEN THE WET WELL LIGHTS ARE TURNED ON.

OFF MODE: EF-3 STOP

HAND MODE: EF-3 RUN CONTINUOUSLY.

ELECTRIC UNIT HEATERS

EUH-1 AND EUH-2 UNIT HEATERS WILL RUN IN RESPONSE TO SPACE THERMOSTATE. WHEN WALL MOUNTED THERMOSTAT DETECTS A TEMPERATURE BELOW THE SETPOINT TEMPERATURE, HEATING ELEMENTS SHALL ENERGIZE AND FAN SHALL RUN. UPON SATISFACTION OF SPACE TEMPERATURE UNIT HEATER FAN AND ELEMENTS SHALL DE-ENERGIZE AND STOP.



M5

REVISIONS	
NAME	DATE

ILLINOIS DEPARTMENT OF TRANSPORTATION

PUMP STATION NO. 48
REHABILITATION

HVAC SCHEDULE AND
OPERATING SEQUENCE

SCALE: N/A
DATE: 03-10-11

DRAWN BY: HFF
CHECKED BY: KHC

