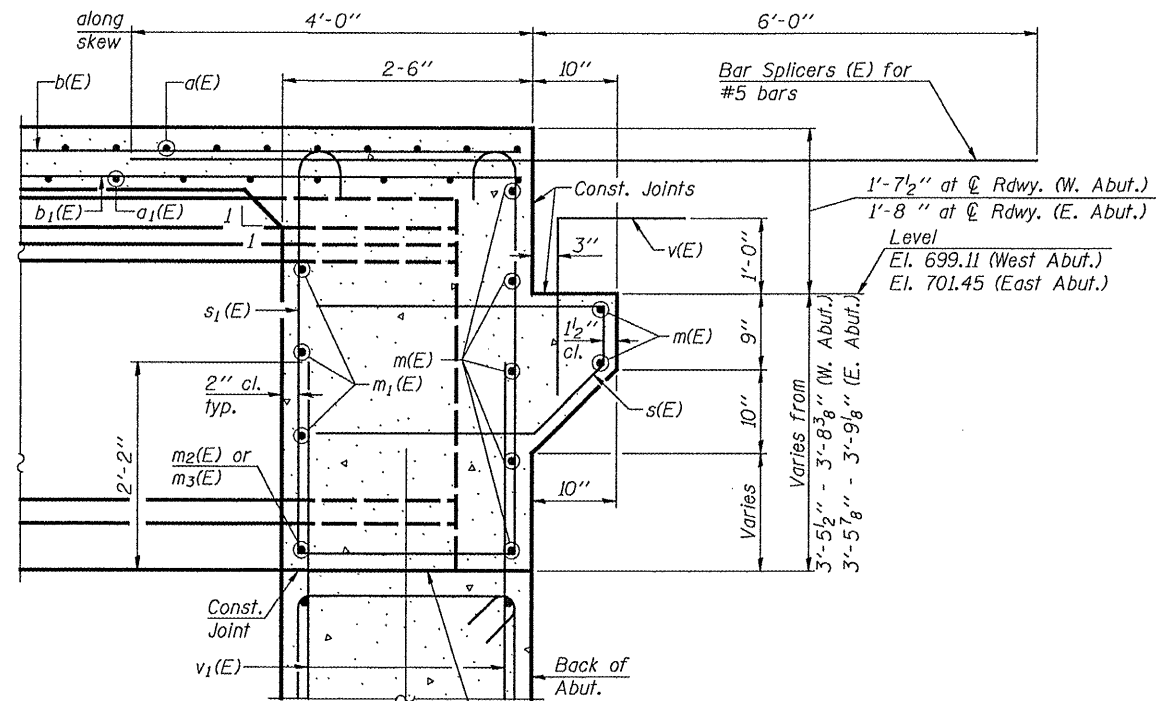


DIAPHRAGM ELEVATION AT ABUTMENT

MIN. BAR LAP

#6 bar = 3'-4"



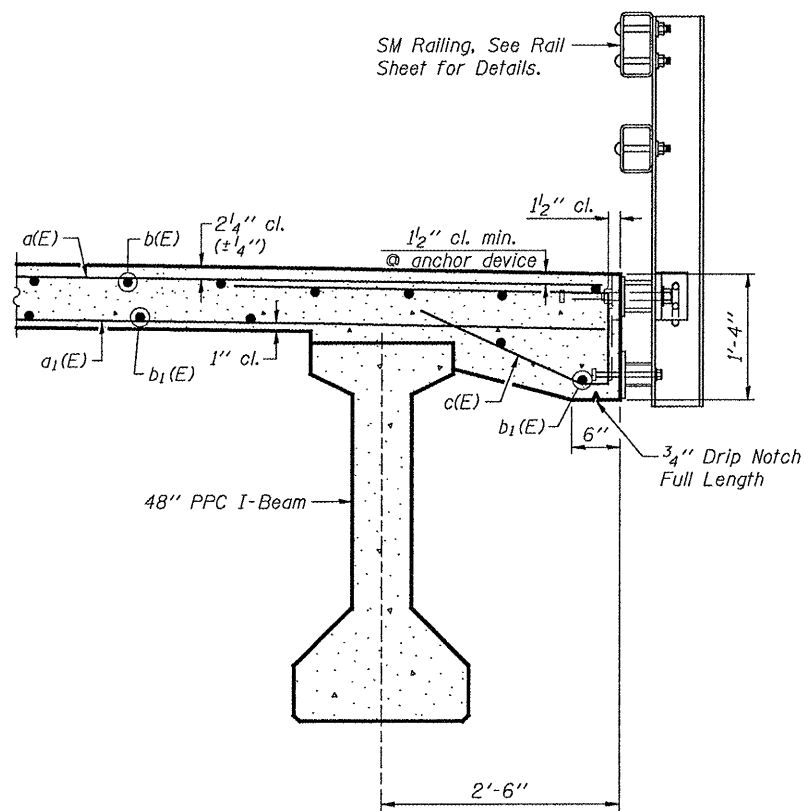
SECTION A-A

Dimensions at right angles to abutment, except as shown.

Beam ends shall be set on an initial 1/2" min. grout (2:1 sand and portland cement, very dry mix) to provide full bearing. Any excess grout squeezed out from under the beam shall be removed. Cost included with Concrete Structures.

NOTES:

Reinforcement bars in diaphragm are billed with superstructure on Structural Sheet 7 of 17. Concrete in diaphragm is included with Concrete Superstructure on Structural Sheet 7 of 17. For details of bar s(E) & s1(E) see Structural Sheet 7 of 17. The s(E) and s1(E) bars shall be placed parallel to the beams. Spacing for these bars shall be at right angles to the beams.



SECTION THRU EDGE OF DECK

Reinforcement bars in the top of the deck may be placed with a 1/2" minimum clearance in the area of the rail post anchor devices. The studs of the anchor devices shall be placed below the top reinforcement bars and the outermost longitudinal reinforcement bar shall be placed directly above the studs of the rail post anchor device.

FILE NAME = S:\PROJECTS\2010\1183D10 - Jodaviness County Bethel Road\DESIGN\STRUCTURE\excavations\1183D100.dwg

USER NAME =	DESIGNED - M. C. WAGNER	REVISED -
	CHECKED - B. K. CONVERSE	REVISED -
PLOT SCALE =	DRAWN - F. D. LACHAT	REVISED -
PLOT DATE =	CHECKED - M. A. CACKLEY	REVISED -

JODAVIESS COUNTY
F.A.S. 72 (E. BETHEL RD.) OVER LITTLE RUSH CREEK
STATION 20 + 15

INTEGRAL ABUTMENT DIAPHRAGM DETAILS
STRUCTURE NO. 043-3277

STRUCTURAL SHEET NO. 8 OF 17 SHEETS

F.A.S. RTE.	SECTION	COUNTY	TOTAL SHEETS	SHEET NO.
72	10-00134-00-BR	JODAVIESS	34	18
WHA* 1183D10		CONTRACT NO. 85536		
ILLINOIS FED. AID PROJECT ER-0072(103)				