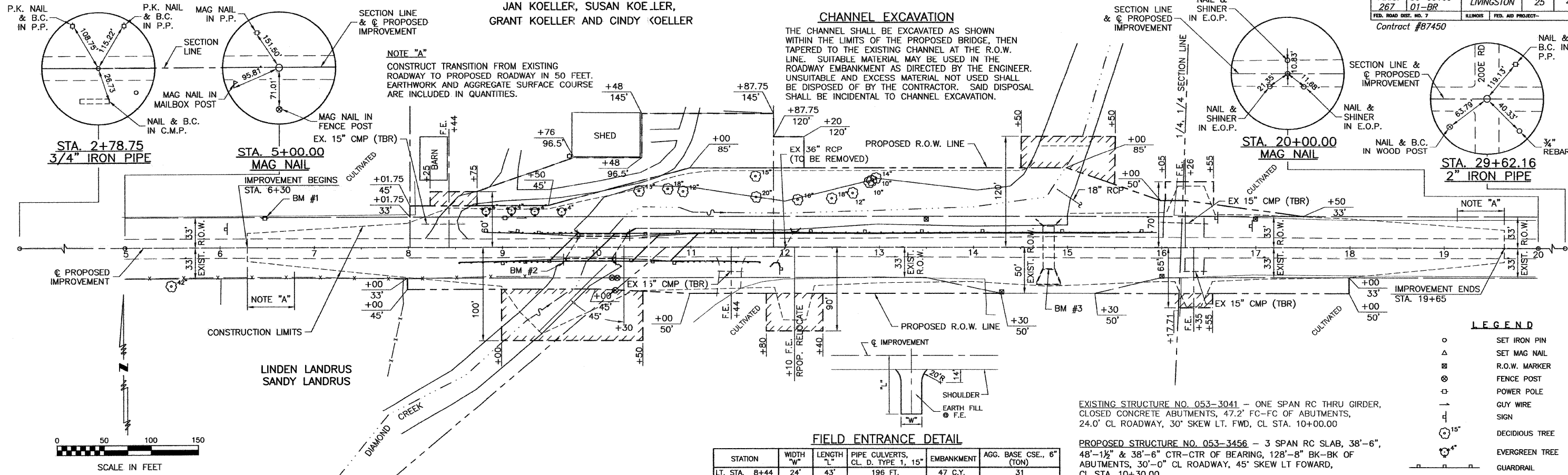


SE 1/4, SEC. 20, T29N, R3E, 3RD P.M.  
 JAN KOELLER, SUSAN KOELLER,  
 GRANT KOELLER AND CINDY KOELLER

GRANT H KOELLER AND JAN P KOELLER

ROUTE NO.	SECTION	COUNTY	TOTAL SHEETS	SHEET NO.
F.A.S. 267	06-00169-01-BR	LIVINGSTON	25	4
FED. ROAD DIST. NO. 7		ILLINOIS	FED. AID PROJECT-	

Contract #67450



**CHANNEL EXCAVATION**

THE CHANNEL SHALL BE EXCAVATED AS SHOWN WITHIN THE LIMITS OF THE PROPOSED BRIDGE, THEN TAPERED TO THE EXISTING CHANNEL AT THE R.O.W. LINE. SUITABLE MATERIAL MAY BE USED IN THE ROADWAY EMBANKMENT AS DIRECTED BY THE ENGINEER. UNSUITABLE AND EXCESS MATERIAL NOT USED SHALL BE DISPOSED OF BY THE CONTRACTOR. SAID DISPOSAL SHALL BE INCIDENTAL TO CHANNEL EXCAVATION.

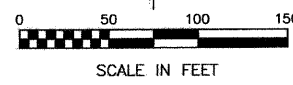
**FIELD ENTRANCE DETAIL**

STATION	WIDTH "W"	LENGTH "L"	PIPE CULVERTS, CL. D. TYPE 1, 15"	EMBANKMENT	AGG. BASE CSE., 6" (TON)
LT. STA. 8+44	24'	43'	196 FT.	47 C.Y.	31
RT. STA. 12+10	24'	76'	90 FT.	153 C.Y.	61
LT. STA. 16+26	48'	66'	112 FT.	164 C.Y.	102
RT. STA. 16+35	24'	63'	46 FT.	91 C.Y.	50

ENTRANCE EMBANKMENT IS INCLUDED IN TOTAL QUANTITIES

EXISTING STRUCTURE NO. 053-3041 - ONE SPAN RC THRU GIRDER, CLOSED CONCRETE ABUTMENTS, 47.2' FC-FC OF ABUTMENTS, 24.0' CL ROADWAY, 30' SKEW LT. FWD, CL STA. 10+00.00

PROPOSED STRUCTURE NO. 053-3456 - 3 SPAN RC SLAB, 38'-6", 48'-1 1/2" & 38'-6" CTR-CTR OF BEARING, 128'-8" BK-BK OF ABUTMENTS, 30'-0" CL ROADWAY, 45' SKEW LT FOWARD, CL STA. 10+30.00



INDICATES TEMPORARY CONSTRUCTION EASEMENT TO BE ACQUIRED

MARIANNE K RUFF  
 NE 1/4, SEC. 29, T29N, R3E, 3RD P.M.

BRUCE LUNDIN TRUST

BM #1 ~ BM CB#2 - RR SPIKE IN POWER POLE AT STA. 6+50±, 32.5' LT. ELEV. 106.48

BM #2 ~ BM CB#1 - CHISELED "□" IN SOUTHWEST WINGWALL OF BRIDGE. ELEV. 100.00 (ASSUMED)

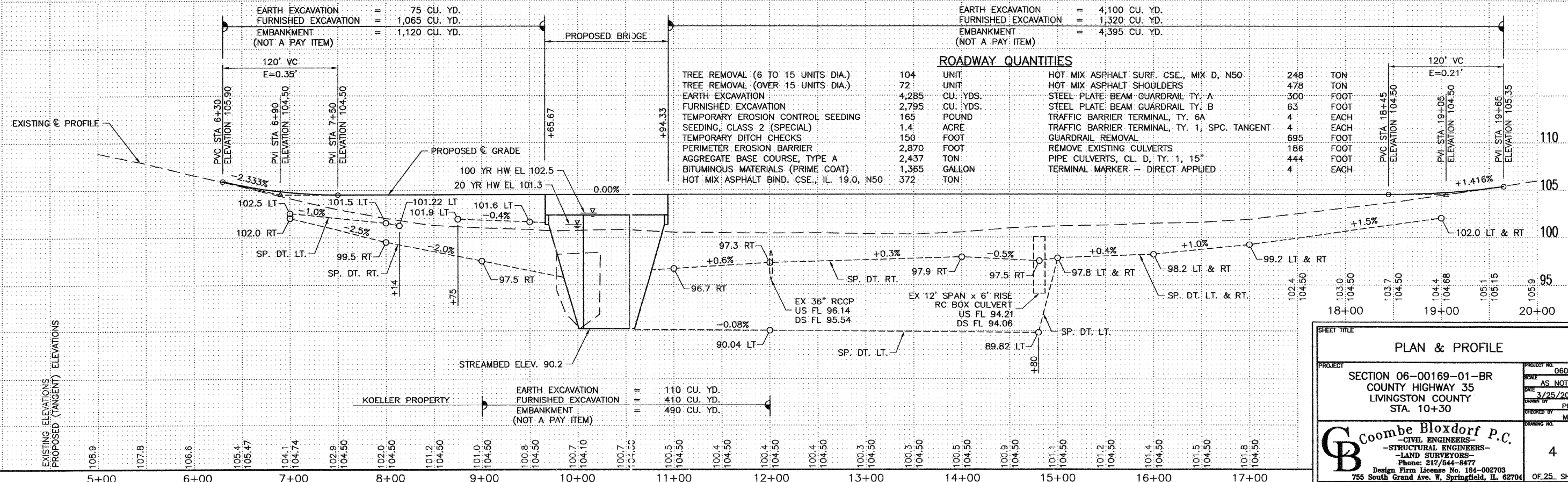
BM #3 ~ BM CB#3 - CHISELED "□" IN CENTER OF SOUTH CONC. HEADWALL AT STA. 14+80±, 23.7' RT. ELEV. 101.32

EARTH EXCAVATION = 75 CU. YD.  
 FURNISHED EXCAVATION = 1,065 CU. YD.  
 EMBANKMENT (NOT A PAY ITEM) = 1,120 CU. YD.

EARTH EXCAVATION = 4,100 CU. YD.  
 FURNISHED EXCAVATION = 1,320 CU. YD.  
 EMBANKMENT (NOT A PAY ITEM) = 4,395 CU. YD.

**ROADWAY QUANTITIES**

TREE REMOVAL (6 TO 15 UNITS DIA.)	104	UNIT	HOT MIX ASPHALT SURF. CSE., MIX D, N50	248	TON
TREE REMOVAL (OVER 15 UNITS DIA.)	72	UNIT	HOT MIX ASPHALT SHOULDERS	478	TON
EARTH EXCAVATION	4,285	CU. YDS.	STEEL PLATE BEAM GUARDRAIL TY. A	300	FOOT
FURNISHED EXCAVATION	2,795	CU. YDS.	STEEL PLATE BEAM GUARDRAIL TY. B	63	FOOT
TEMPORARY EROSION CONTROL SEEDING	165	POUND	TRAFFIC BARRIER TERMINAL, TY. 6A	4	EACH
SEEDING: CLASS 2 (SPECIAL)	1.4	ACRE	TRAFFIC BARRIER TERMINAL, TY. 1; SPC. TANGENT	4	EACH
TEMPORARY DITCH CHECKS	150	FOOT	GUARDRAIL REMOVAL	695	FOOT
PERIMETER EROSION BARRIER	2,870	FOOT	REMOVE EXISTING CULVERTS	186	FOOT
AGGREGATE BASE COURSE, TYPE A	2,437	TON	PIPE CULVERTS, CL. D, TY. 1, 15"	444	FOOT
BITUMINOUS MATERIALS (PRIME COAT)	1,385	GALLON	TERMINAL MARKER - DIRECT APPLIED	4	EACH
HOT MIX ASPHALT BIND. CSE., IL. 19.0, N50	372	TON			



**SHEET TITLE**  
 PLAN & PROFILE

PROJECT: SECTION 06-00169-01-BR  
 COUNTY HIGHWAY 35  
 LIVINGSTON COUNTY  
 STA. 10+30

PROJECT NO. 06079  
 SCALE AS NOTED  
 DATE 3/25/2011  
 DRAWN BY PPW  
 CHECKED BY MRL  
 DRAWING NO. 4

**Coombe Bloxdorf P.C.**  
 - CIVIL ENGINEERS -  
 - STRUCTURAL ENGINEERS -  
 - LAND SURVEYORS -  
 Phone: 217/544-8477  
 Design Firm License No. 184-002703  
 755 South Grand Ave. W. Springfield, IL 62704 OF 25 SHTS