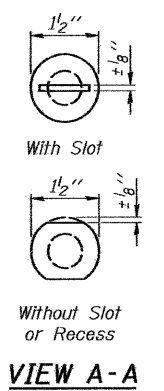
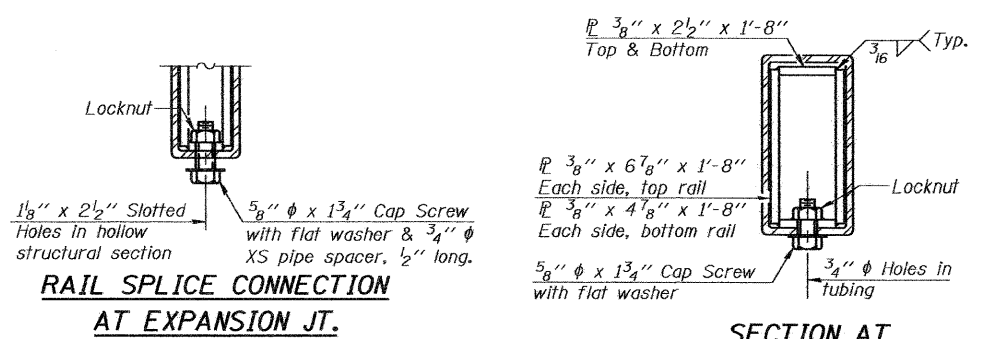


DETAIL OF 3/4" ϕ ROUND HEAD BOLT

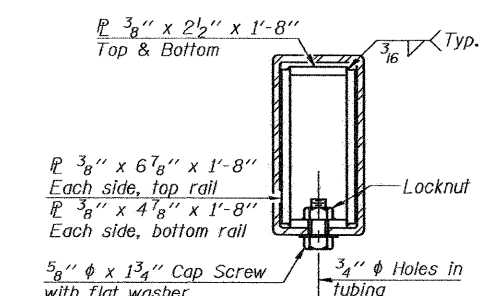


VIEW A-A

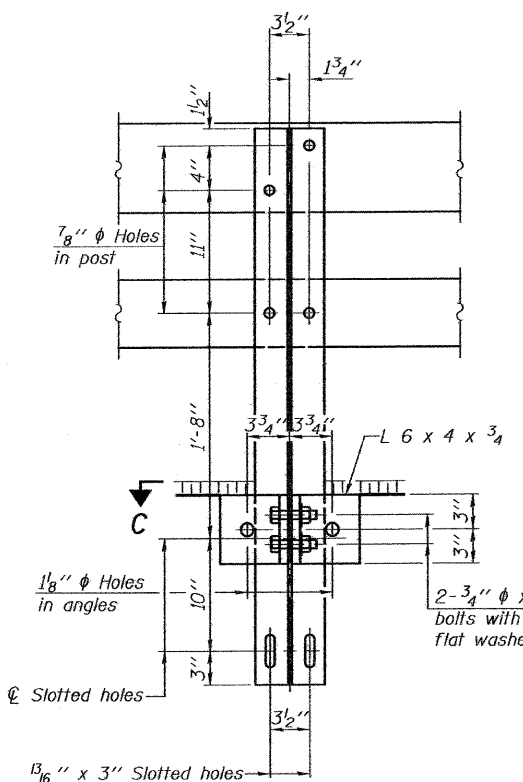
4-3/4" ϕ x 6" Round Head Bolts (With slot or approved recess in head) with locknut & flat washer. 7/8" ϕ holes in hollow structural section may be drilled in the field.



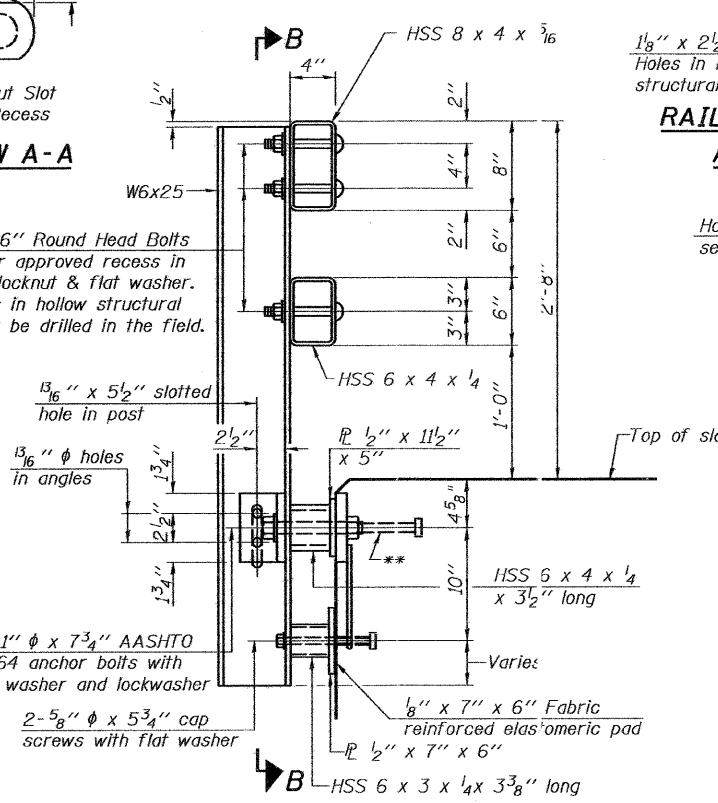
RAIL SPLICE CONNECTION AT EXPANSION JT.



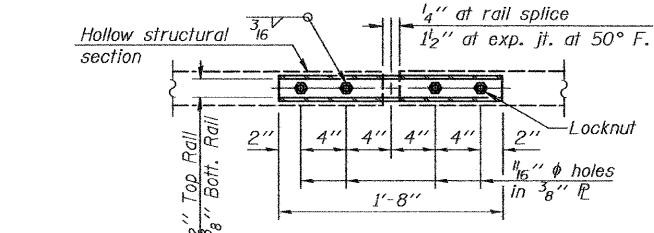
SECTION AT RAIL SPLICE



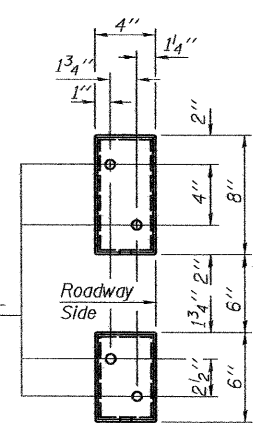
SECTION B-B



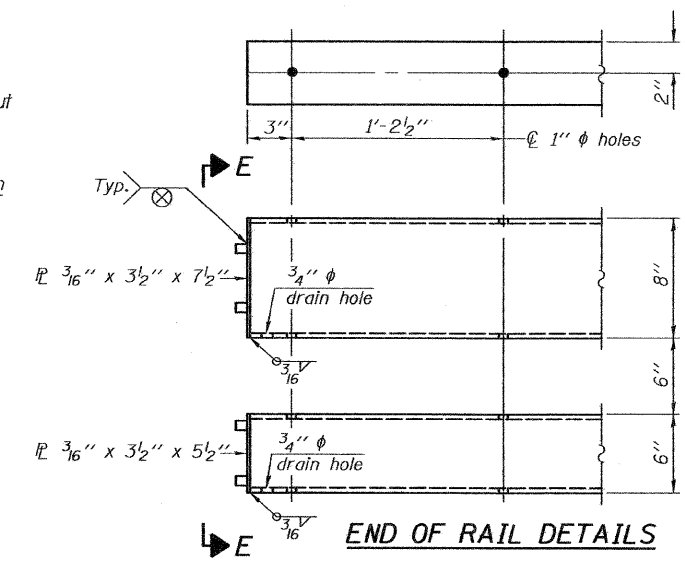
SECTION AT RAIL POST



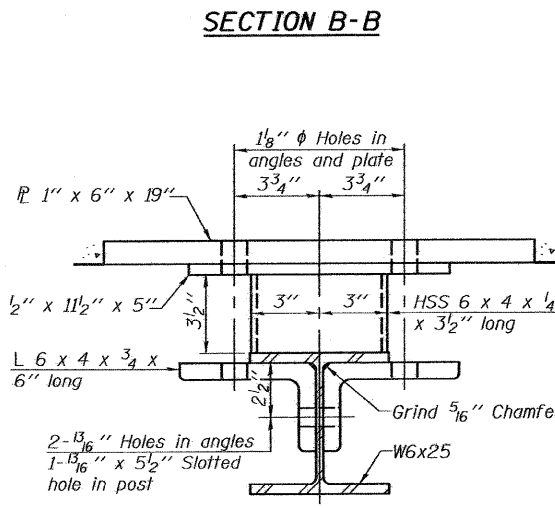
PLAN-BOTT. SPLICE P TYPICAL



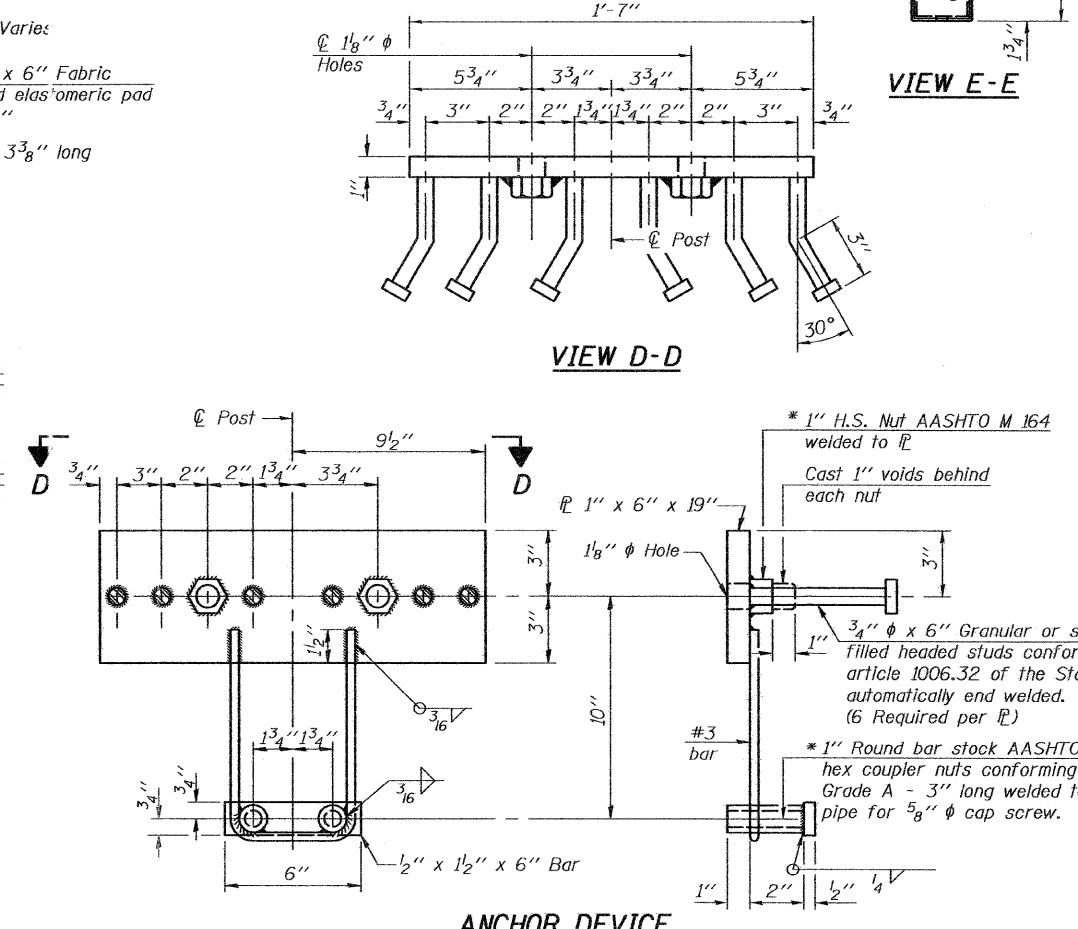
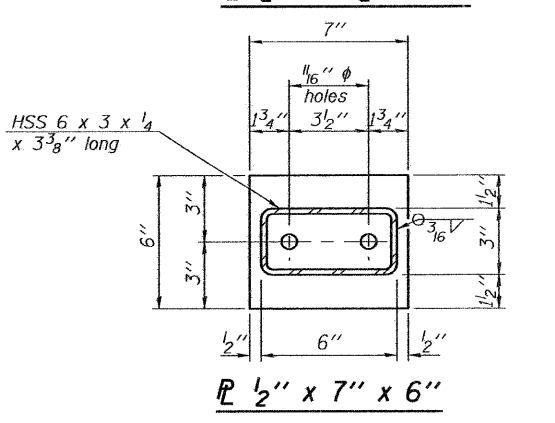
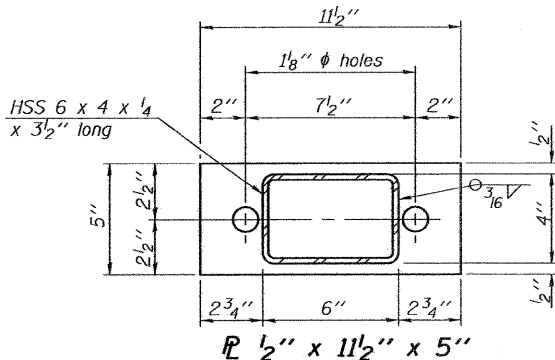
VIEW E-E



END OF RAIL DETAILS



SECTION C-C



ANCHOR DEVICE

Notes:
 All field drilled holes shall be coated with an approved zinc rich paint before erection.
 For multi-span bridges, sufficient 1/4" x 6" x 1'-2" galvanized steel shims shall be provided to align rail between adjacent spans. Cost included with Steel Railing, Type SM.
 All steel rail members shall be galvanized according to Article 509.05 of the Standard Specifications.
 *The studs of the anchor devices shall be placed below the top reinforcement bars of the edge beam.

BILL OF MATERIAL

Item	Unit	Quantity
Steel Railing, Type SM	Foot	255

SHEET TITLE		STEEL RAILING TYPE SM	
PROJECT	C.H. 35 OVER DIAMOND CREEK	PROJECT NO.	06079
	FAS RTE.267 SEC. 06-00169-01-BR	DATE	3/29/11
	LIVINGSTON COUNTY	DESIGN BY	CME/MCB
	STATION 10+30.00	DRAWN BY	TFG
	STRUCTURE NUMBER 053-3456	CHECKED BY	CME/MCB
		DRAWING NO.	
Coombe-Bloxdorf P.C. -CIVIL ENGINEERS- -STRUCTURAL ENGINEERS- -LAND SURVEYORS- Design Firm License No. 184-002703		7	
		OF 12 SHTS	

PLT DATE = 3/10/11
 FILE NAME = C:\ASSETS\87450-01\steel-railing-type-sm.dgn
 PLOT SCALE = 0.1000000 1' = 1"
 USER NAME = CFC

*Threaded areas shall be plugged or blocked off during casting of beam. Galvanized after fabrication.