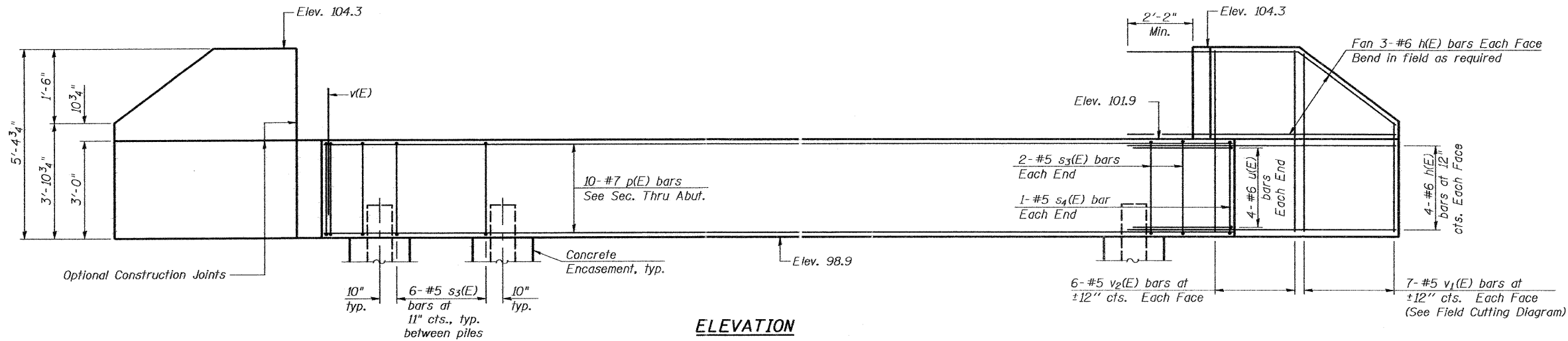
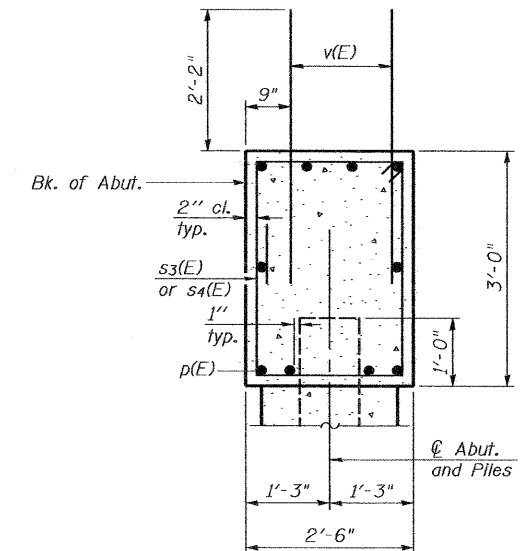


ROUTE NO.	SECTION	COUNTY	TOTAL SHEETS	SHEET NO.	SHEET NO. 8 12 SHEETS
FAS 267	*	LIVINGSTON	25	15	
FED. ROAD DIST. NO.		ILLINOIS	FED. AID PROJECT		

Contract #87450 \*06-00169-01-BR



**ELEVATION**

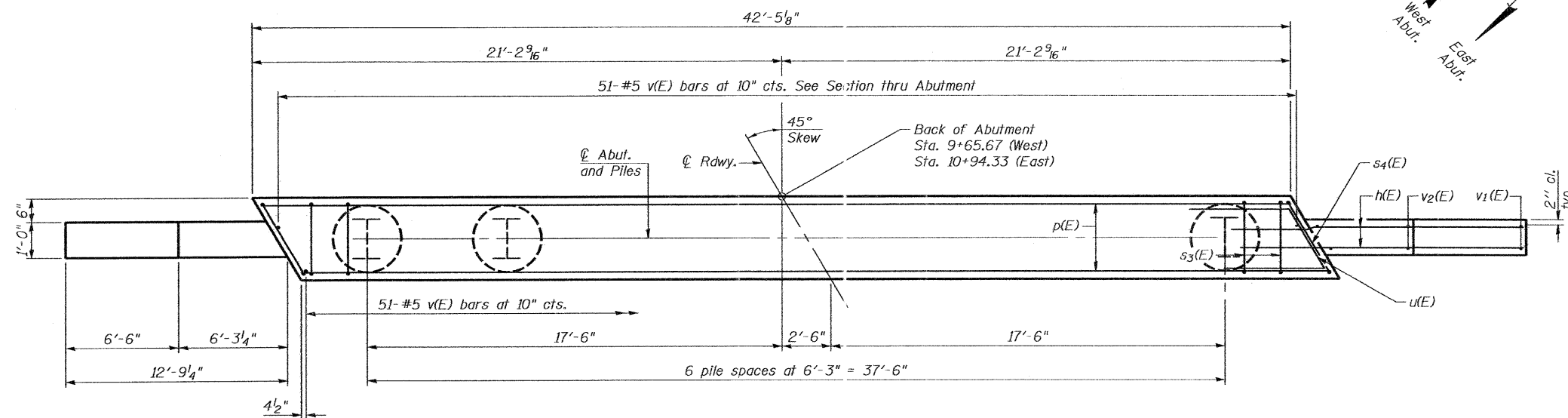


**SEC. THRU ABUT.**

**TWO ABUTMENTS  
BILL OF MATERIAL**

Bar	No.	Size	Length	Shape
h(E)	56	#6	13'-9"	—
p(E)	20	#7	42'-1"	—
s3(E)	80	#5	10'-7"	□
s4(E)	4	#5	12'-5"	□
u(E)	16	#6	8'-1"	∩
v(E)	204	#5	4'-4"	—
v1(E)	28	#5	8'-7"	—
v2(E)	48	#5	5'-0"	—
Structure Excavation		Cu. Yd.	188	
Concrete Structures		Cu. Yd.	32.7	
Reinforcement Bars, Epoxy Coated		Pound	5430	
Furnishing Piles, HP 12x53		Foot	377	
Driving Piles		Foot	377	
Test Pile, HP 12x53		Each	1	
Concrete Encasement		Cu. Yd.	4.9	

For details of piles and Concrete Encasement, see sheet 10 of 12.



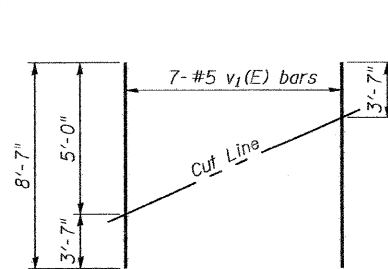
**PLAN**

**EAST ABUT. PILE DATA**

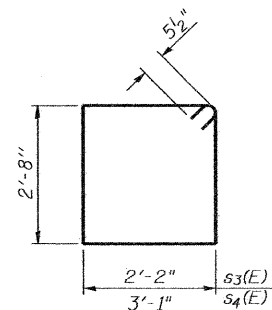
Type: HP 12x53  
Nominal Required Bearing: 166 k  
Factored Resistance Available: 83 k  
Est. Length: 29 ft.  
No. Production Piles: 7  
No. Test Piles: None

**WEST ABUT. PILE DATA**

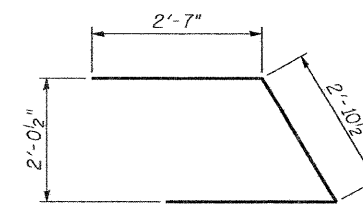
Type: HP 12x53  
Nominal Required Bearing: 166 k  
Factored Resistance Available: 83 k  
Est. Length: 29 ft.  
No. Production Piles: 6  
No. Test Piles: 1



**FIELD CUTTING DIAGRAM**  
Order v1(E) full length. Cut as shown and use remainder of bars in opposite face.



**BARS s3(E) & s4(E)**



**BAR u(E)**

PLT DATE = 3/29/11  
FILE NAME = D:\AS\116-87450-008-abutments.dgn  
PLOT SCALE = 0.000000 1" = 1'-0"  
USER NAME = CFC

SHEET TITLE		PROJECT NO.	
<b>ABUTMENTS</b>		06079	
PROJECT	C.H. 35 OVER DIAMOND CREEK	DATE	3/29/11
	FAS RTE.267 SEC. 06-00169-01-BR	DESIGN BY	CME/MCB
	LIVINGSTON COUNTY	DRAWN BY	CFC
	STATION 10+30.00	CHECKED BY	CME/MCB
	STRUCTURE NUMBER 053-3456	DRAWING NO.	8
 Coombe-Bloxdorf P.C. -CIVIL ENGINEERS- -STRUCTURAL ENGINEERS- -LAND SURVEYORS- Design Firm License No. 184-002703		OF 12 SHTS	