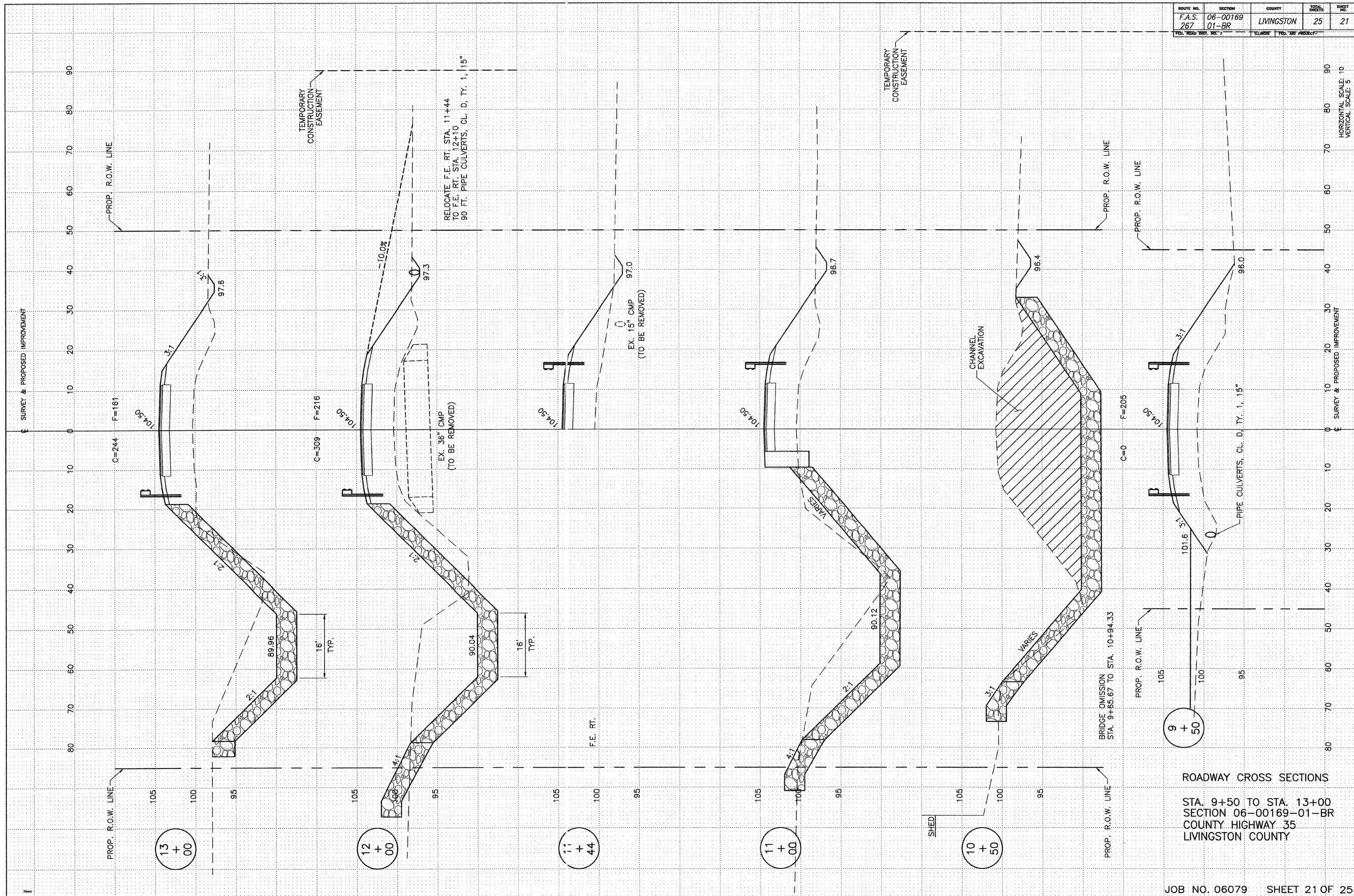


ROUTE NO.	SECTION	COUNTY	TOTAL SHEETS	SHEET NO.
F.A.S. 267	06-00169-01-BR	LIVINGSTON	25	21
FED. ROAD DIST. NO. 1		ILLINOIS	FED. AID PROJECT	



ROADWAY CROSS SECTIONS
 STA. 9+50 TO STA. 13+00
 SECTION 06-00169-01-BR
 COUNTY HIGHWAY 35
 LIVINGSTON COUNTY