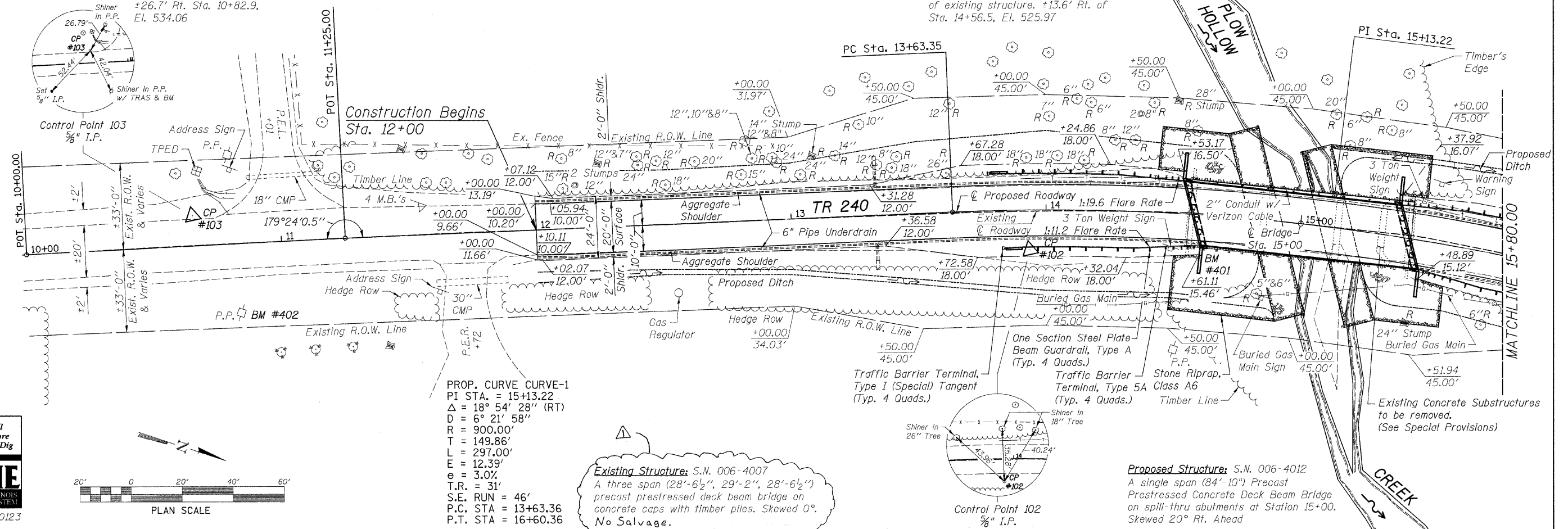


Bench Mark #402: RR spike in PP w/transformer.
±26.7' Rt. Sta. 10+82.9,
El. 534.06

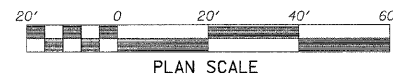
Bench Mark #401: Chiseled "C" on southeast wingwall
of existing structure. ±13.6' Rt. of
Sta. 14+56.5, El. 525.97



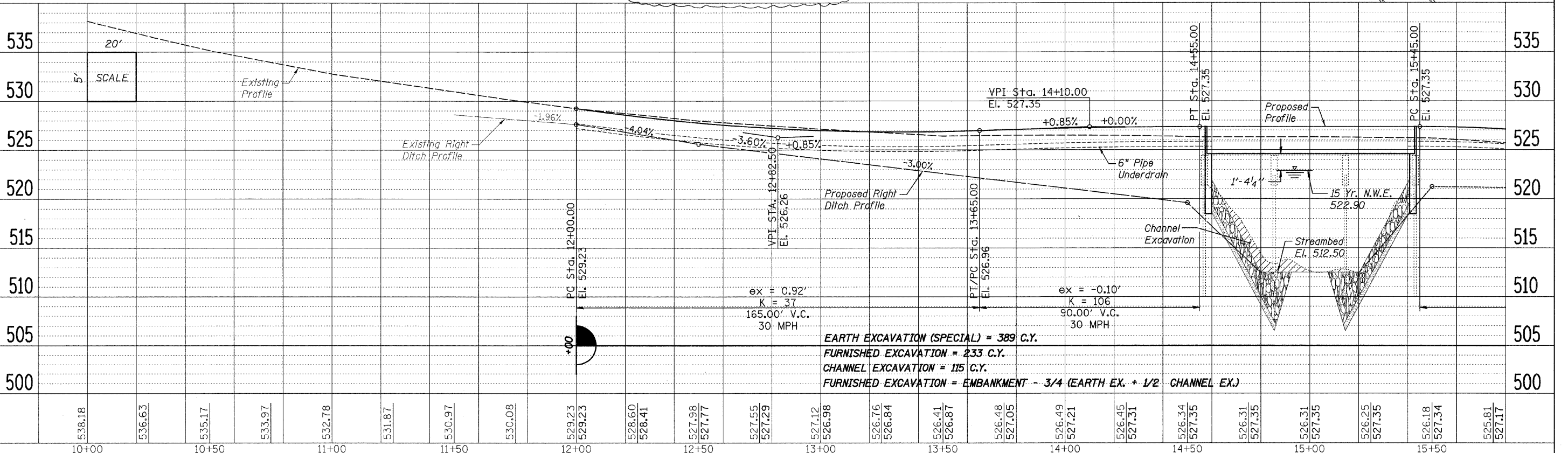
PROP. CURVE CURVE-1
PI STA. = 15+13.22
Δ = 18° 54' 28" (RT)
D = 6° 21' 58"
R = 900.00'
L = 149.86'
T = 297.00'
E = 12.39'
e = 3.0'
T.R. = 31'
S.E. RUN = 46'
P.C. STA = 13+63.36
P.T. STA = 16+60.36

Existing Structure: S.N. 006-4007
A three span (28'-6 1/2", 29'-2", 28'-6 1/2")
precast prestressed deck beam bridge on
concrete caps with timber piles. Skewed 0°.
No Salvage.

Proposed Structure: S.N. 006-4012
A single span (84'-10") Precast
Prestressed Concrete Deck Beam Bridge
on spill-thru abutments at Station 15+00.
Skewed 20° Rt. Ahead



FILE NAME = SAN\PROJECTS\2010\1285D10\Bureau\Co-Tr240\DESIGN\STRUCT\pp TR240.dgn



EARTH EXCAVATION (SPECIAL) = 389 C.Y.
FURNISHED EXCAVATION = 233 C.Y.
CHANNEL EXCAVATION = 115 C.Y.
FURNISHED EXCAVATION = EMBANKMENT - 3/4 (EARTH EX. + 1/2 CHANNEL EX.)

538.18	536.63	535.17	533.97	532.78	531.87	530.97	530.08	529.23	529.23	528.60	528.41	527.98	527.77	527.55	527.29	527.12	526.98	526.76	526.84	526.41	526.87	526.48	527.05	526.49	527.21	526.45	527.31	526.34	527.35	526.31	527.35	526.25	527.35	526.18	527.34	525.81	527.17
10+00	10+50	11+00	11+50	12+00	12+50	13+00	13+50	14+00	14+50	15+00	15+50																										

USER NAME =	DESIGNED - B.S.K.	REVISED - 6-6-2011
PLOT SCALE =	CHECKED - B.K.C.	REVISED -
PLOT DATE =	DRAWN - R.D.A.	REVISED -
	CHECKED - B.S.K.	REVISED -

BUREAU COUNTY
TR 240 OVER PLOW HOLLOW CREEK
STATION 15 + 00

PLAN AND PROFILE
STRUCTURE NO. 006-4012
STA. 10+00 TO STA. 15+80

TWP. RTE. 240	SECTION 10-01121-00-BR	COUNTY BUREAU	TOTAL SHEETS 23	SHEET NO. 6
WHA# 1285D10		CONTRACT NO. 87483		
ILLINOIS FED. AID PROJECT 8ROS-011(075)				