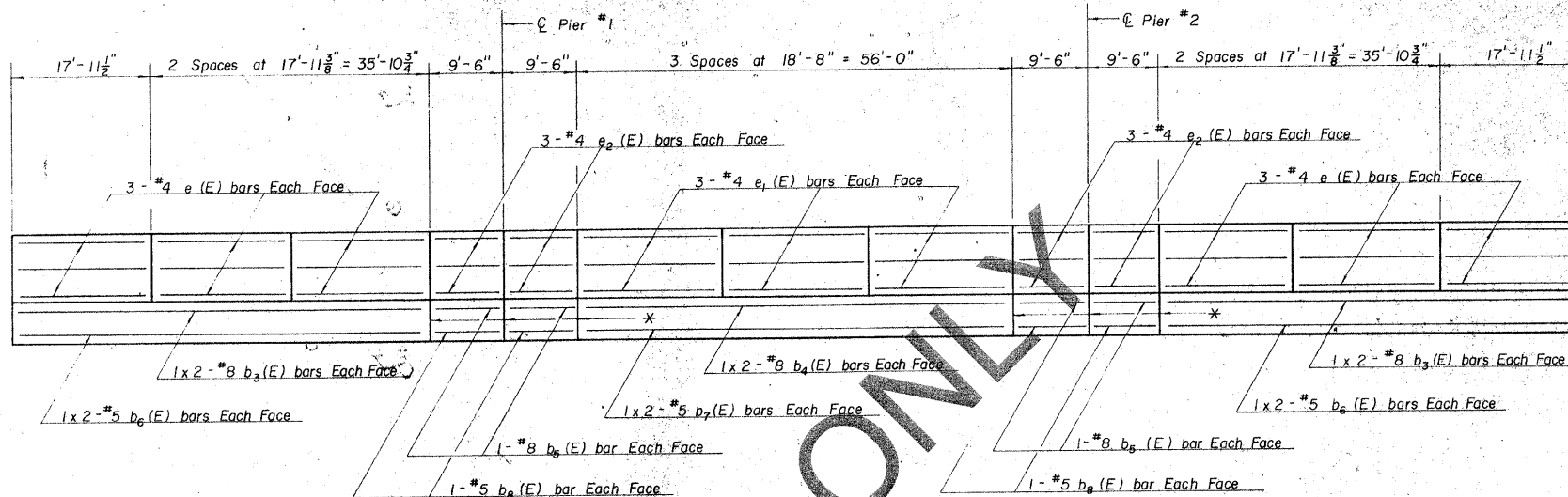


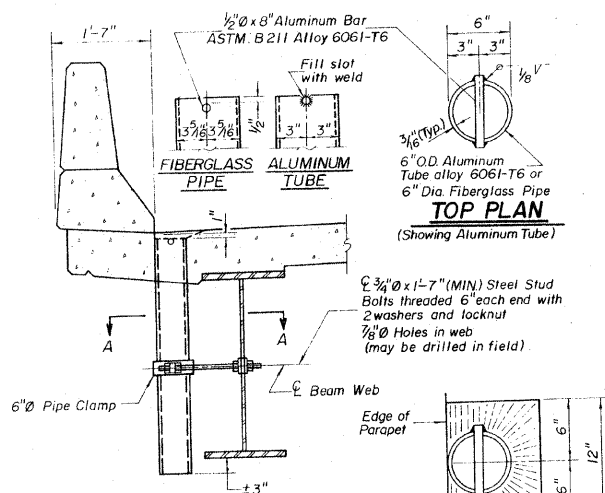
DETAILS OF PARAPET JOINT

1/8" ALUMINUM SHEET AT PIERS AND AT JOINTS SHOWN. ASTM B209 ALLOY 3003-H14, COST TO BE INCIDENTAL.



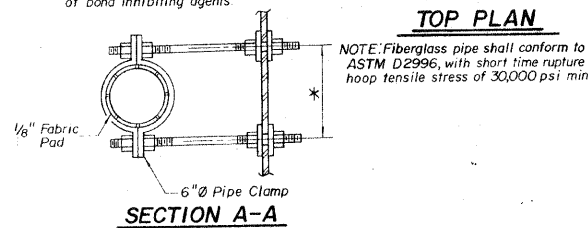
PARAPET JOINT SPACING
(ALONG SIDE FACE)

* 1/8" Aluminum sheet joint in base of parapet



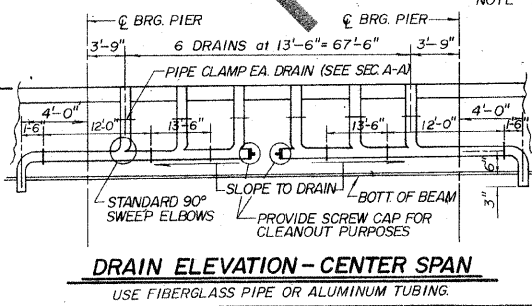
SECTION AT PARAPET

The surface of the fiberglass pipe shall be free of bond inhibiting agents.



DETAILS OF FLOOR DRAINS

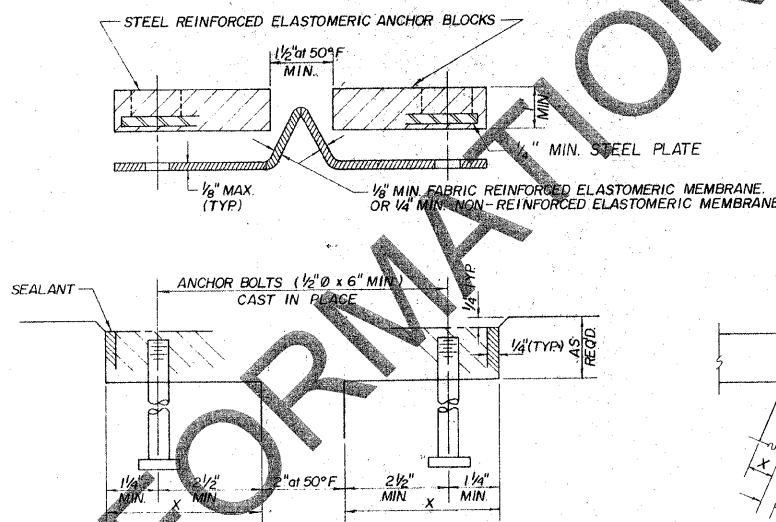
NOTE: COST OF CENTER SPAN DECK DRAINAGE SYSTEM SHALL BE INCLUDED IN THE UNIT PRICE FOR FLOOR DRAINS.



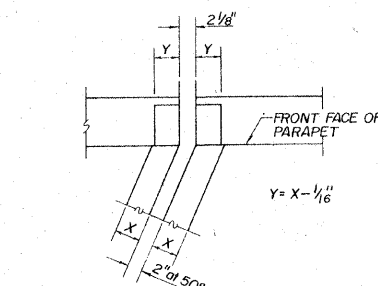
DRAIN ELEVATION-CENTER SPAN
USE FIBERGLASS PIPE OR ALUMINUM TUBING.

MIN. LAP

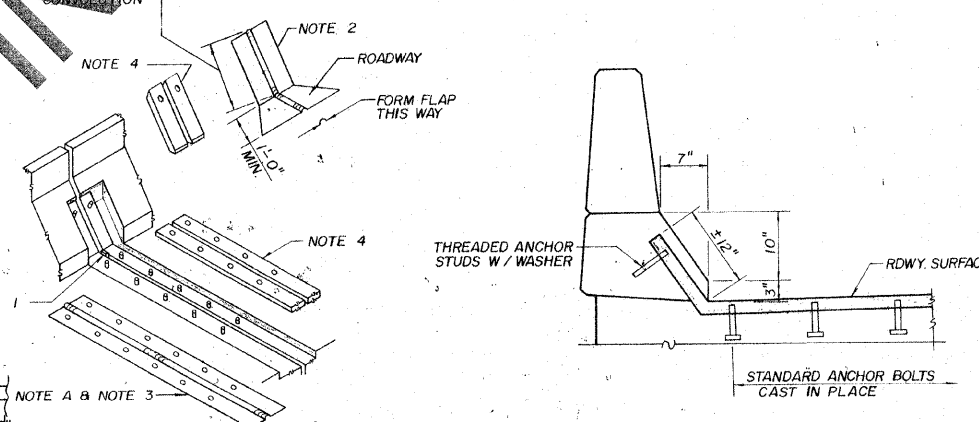
- #4 BAR 1'-4"
- #5 BAR 1'-8"
- #6 BAR 2'-0"
- #7 BAR 2'-9"



CROSS SECTION



FORMING BLOCKOUT SKETCH



TYPICAL END DETAILS

NEOPRENE EXPANSION JOINT DETAILS

GENERAL NOTES

CONTINUOUS SEAL MEMBRANE EXPANSION JOINTS CONSIST OF MOLDED ANCHOR BLOCKS OF ELASTOMER AND STEEL, FIELD ASSEMBLED OVER CONTINUOUS LENGTHS OF ELASTOMERIC MEMBRANE. SEE SPECIAL PROVISIONS.

THE ELASTOMERIC MEMBRANE SHALL BE PREMOLDED WITH A SINGLE OR A DOUBLE UPWARD CONVOLUTION THAT WILL HAVE A "MEMORY" TO RETURN TO ITS MOLDED POSITION UPON JOINT CLOSURE.

THE STEEL REINFORCEMENT MUST EXTEND UP THE BACK FACE OF ANCHOR BLOCKS WHEN ASPHALT SURFACES ARE USED BUT IS OPTIONAL IN CONCRETE BLOCKOUT.

THE CONVOLUTION LENGTH SHALL BE SUCH THAT THE EXTENDED LENGTH WILL NOT BE GREATER THAN THE MANUFACTURED LENGTH WHEN THE JOINT IS FULLY EXPANDED IN ITS DESIGN RANGE AND WILL NOT PROTRUDE ABOVE THE ANCHOR BLOCKS WHEN THE JOINT IS FULLY COMPRESSED.

JOINT OPENINGS SHALL BE ADJUSTED IN ACCORDANCE WITH ARTICLE 503.07(c) OF THE STANDARD SPECIFICATIONS WHEN THE DECK IS POURED AT AN AMBIENT TEMPERATURE OTHER THAN 50°F.

THE PARAPET FLAPS MAY BE FURNISHED FACTORY VULCANIZED TO THE ROADWAY MEMBRANE PROVIDED THE CENTERLINE OF THE CONVOLUTION IS MAINTAINED AND THE PROCESS AND METHOD MEET THE APPROVAL OF THE ENGINEER.

INSTALLATION NOTES

- (1) INSTALL SPONGE MANDRELS INTO POSITIONS SHOWN TO FORM FLAP CONVOLUTION.
 - (2) INSTALL PARAPET PIECE (TRIM ROADWAY FLAP TO FIT BEFORE APPLYING EPOXY).
 - (3) INSTALL CONTINUOUS SEAL IN ROADWAY.
 - (4) INSTALL ANCHOR BLOCKS AS INDICATED.
- NOTE A: MAXIMUM SPACING OF ANCHOR BOLTS SHALL BE 12" CENTERS.

SUPERSTRUCTURE DETAILS
SECTION 83-04111-00-BR
DEKALB ROAD DISTRICT
DEKALB COUNTY