

STATE OF ILLINOIS
DEPARTMENT OF TRANSPORTATION
DIVISION OF HIGHWAYS

F.A. RTE.	SECTION	COUNTY	TOTAL SHEETS	SHEET NO.
	10-00162-00-SG		13	1
FED. ROAD DIST. NO.	ILLINOIS	CONTRACT NO. 89589		
* PEORIA & TAZEWELL				

PROPOSED HIGHWAY SIGNING PLANS
SIGN MODERNIZATION

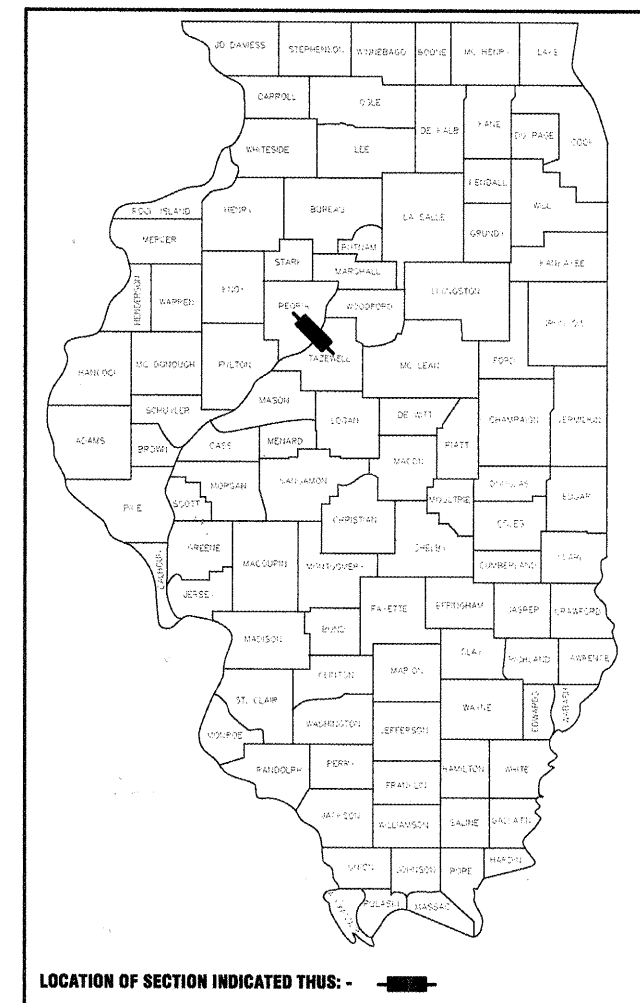
VARIOUS ROUTES
SECTION 10-00162-00-SG
PROJECT HSIP 0179 035
JOB NO. C-94-009-11
PEORIA & TAZEWELL COUNTIES

INDEX OF SHEETS

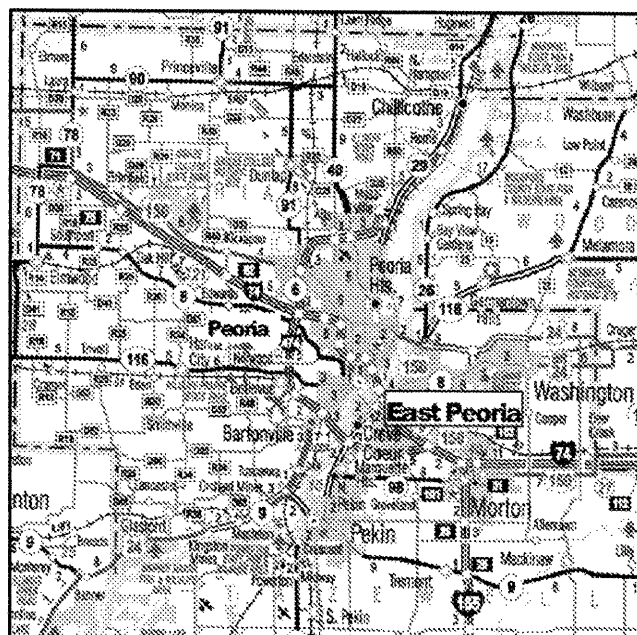
- 1 COVER SHEET
- 2 SUMMARY OF QUANTITIES
- 3 SIGN INVENTORY FOR CITY OF EAST PEORIA
- 4 SIGN INVENTORY FOR VILLAGE OF BARTONVILLE
- 5 SIGN INVENTORY FOR VILLAGE OF BELLEVUE
- 6 SIGN INVENTORY FOR VILLAGE OF MORTON
- 7 SIGN INVENTORY FOR VILLAGE OF NORTH PEKIN
- 8 SIGN INVENTORY FOR CITY OF PEKIN
- 9 SIGN INVENTORY FOR VILLAGE OF SOUTH PEKIN
- 10 SIGN INVENTORY FOR HOLLIS TOWNSHIP ROAD DISTRICT
- 11 SIGN INVENTORY FOR KICKAPOO TOWNSHIP ROAD DISTRICT
- 12 SIGN INVENTORY FOR LIMESTONE TOWNSHIP ROAD DISTRICT
- 13 SIGN INVENTORY FOR MEDINA TOWNSHIP ROAD DISTRICT

LIST OF STANDARDS

- 701201-04 LANE CLOSURE, 2L, 2W, DAY ONLY, FOR SPEEDS > 45 MPH
- 701301-04 LANE CLOSURE, 2L, 2W, SHORT TIME OPERATIONS
- 701336-06 LANE CLOSURE, 2L, 2W, WORK AREAS IN SERIES, FOR SPEEDS > 45 MPH
- 701901-01 TRAFFIC CONTROL DEVICES
- 720001-01 SIGN PANEL MOUNTING DETAILS
- 720006-02 SIGN PANEL ERECTION DETAILS
- 728001-01 TELESCOPING STEEL SIGN SUPPORT



DESCRIPTION: THE PROPOSED IMPROVEMENT INCLUDES SIGN MODERNIZATION FOR VARIOUS LOCAL AGENCIES IN PEORIA AND TAZEWELL COUNTIES.

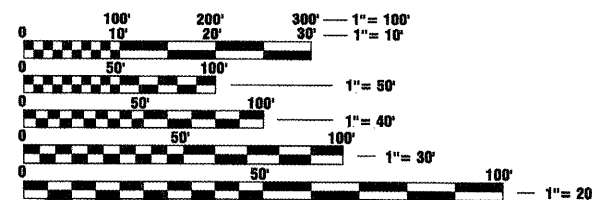


LOCATION MAP
NOT TO SCALE

LENGTH OF PROJECT = VARIES

ROADWAY CLASSIFICATION: LOCAL ROADS
 CURRENT ADT = VARIES
 DESIGN ADT = VARIES
 DESIGN SPEED = VARIES
 DESIGN GUIDELINES: VARIES
 VARIANCES: NONE
 COMMITMENTS: NONE

Joseph E. Choultz
 4/13/2011
 EXPIRES: 11/30/2011



FULL SIZE PLANS HAVE BEEN PREPARED USING STANDARD ENGINEERING SCALES. REDUCED SIZED PLANS WILL NOT CONFORM TO STANDARD SCALES. IN MAKING MEASUREMENTS ON REDUCED PLANS, THE ABOVE SCALES MAY BE USED.

J.U.L.I.E.
 JOINT UTILITY LOCATION INFORMATION FOR EXCAVATION
 1-800-892-0123
 OR 811

PROJECT ENGINEER
PROJECT MANAGER
CATALOG NO. 034511-00
CONTRACT NO. 89589

APPROVED *Edw. W. [Signature]* 20 11
 LOCAL AGENCY OFFICIAL

PASSED *04/14* 20 11
 DISTRICT ENGINEER OF LOCAL ROADS & STREETS

Releasing For Bid Based On Limited Review *April 14* 20 11
Joseph E. Choultz
 DEPUTY DIRECTOR OF HIGHWAYS,
 REGION THREE ENGINEER

STATE OF ILLINOIS
 DEPARTMENT OF TRANSPORTATION

PRINTED BY THE AUTHORITY OF THE STATE OF ILLINOIS