

IL. RTE. 116 POT Sta 9+86.50 IL. RTE. 116

PI Sta 15+00.00

PI Sta 22+00.00

PI Sta 36+49.32

1500 N. PI Sta 63+12.42 1500 N.


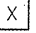

PI Sta 89+85.40

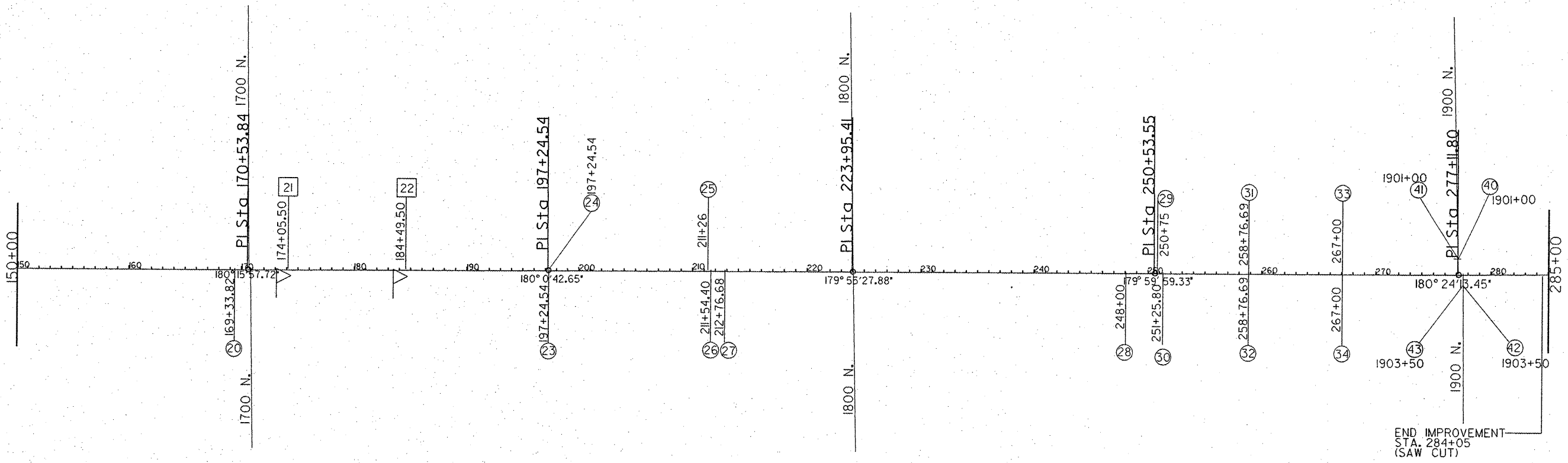
1600 N. PI Sta 116+85.09 1600 N.

PI Sta 143+69.18

179°13.86' 180°58'56.14" 180°0'52.78" 179°48'38.75" 179°59'39.27" 1603+16.15 180°0'35.07" 179°58'49.81"

BEGIN IMPROVEMENT STA. 11+31.10

-  -PROPOSED MAILBOX TURNOUT
-  -PROPOSED PRIVATE ENTRANCE
-  -PROPOSED FIELD ENTRANCE



END IMPROVEMENT STA. 284+05 (SAW CUT)

FILE NAME = Y:\County\860075-04-PV\CAD\SHI\_Alignment\_Layout.dgn  
 USER NAME = BJH  
 PLOT SCALE = 1"=1000'  
 PLOT DATE = 04/12/2011

DESIGNED - JHH  
 DRAWN - BJH  
 CHECKED - JHH  
 DATE - 04/04/2011

REVISED -  
 REVISED -  
 REVISED -  
 REVISED -

WOODFORD COUNTY  
 HIGHWAY DEPARTMENT

86-00075-04-PV  
 Alignment Layout  
 SCALE: 1"=1000' SHEET NO. 9 OF 33 SHEETS STA. 9+86.50 TO STA. 285+00

|                    |                        |                 |                 |             |
|--------------------|------------------------|-----------------|-----------------|-------------|
| F.A. RTE. 358      | SECTION 86-00075-04-PV | COUNTY WOODFORD | TOTAL SHEETS 33 | SHEET NO. 9 |
| CONTRACT NO. 89596 |                        |                 |                 |             |

ILLINOIS FED. AID PROJECT