

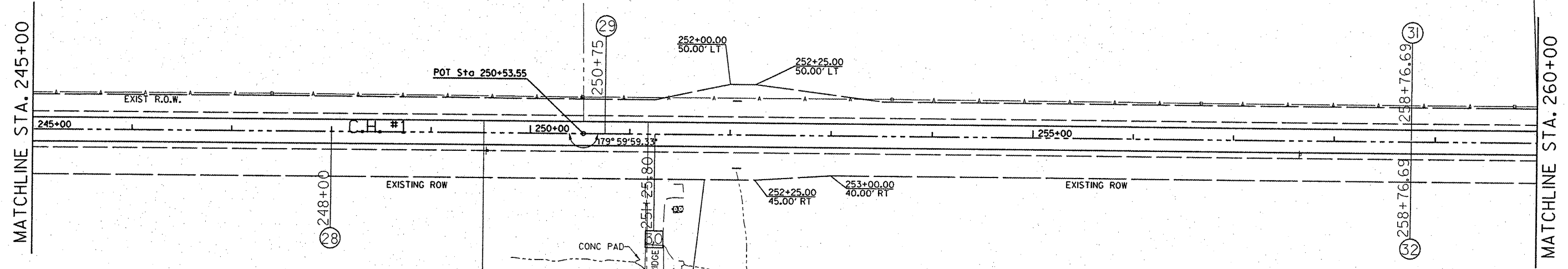
F.A. RTE.	SECTION	COUNTY	TOTAL SHEETS	SHEET NO.
358	86-00075-04-PV	WOODFORD	33	26
STA. 245+00.00		TO STA. 260+00.00		
FED. ROAD DIST. NO.	ILLINOIS	FED. AID PROJECT		

EDNA A. ZOISS

VIOLET M. ZOISS

County Highway #1
 POT STA 250+53.55
 N 1527909.605
 E 2543394.930

PLAN	DATE	BY
SUBMITTED		
PLOTTED		
NOTE BOOK		
NO.		



- PROPOSED MAILBOX TURNOUT
- PROPOSED PRIVATE ENTRANCE
- PROPOSED FIELD ENTRANCE

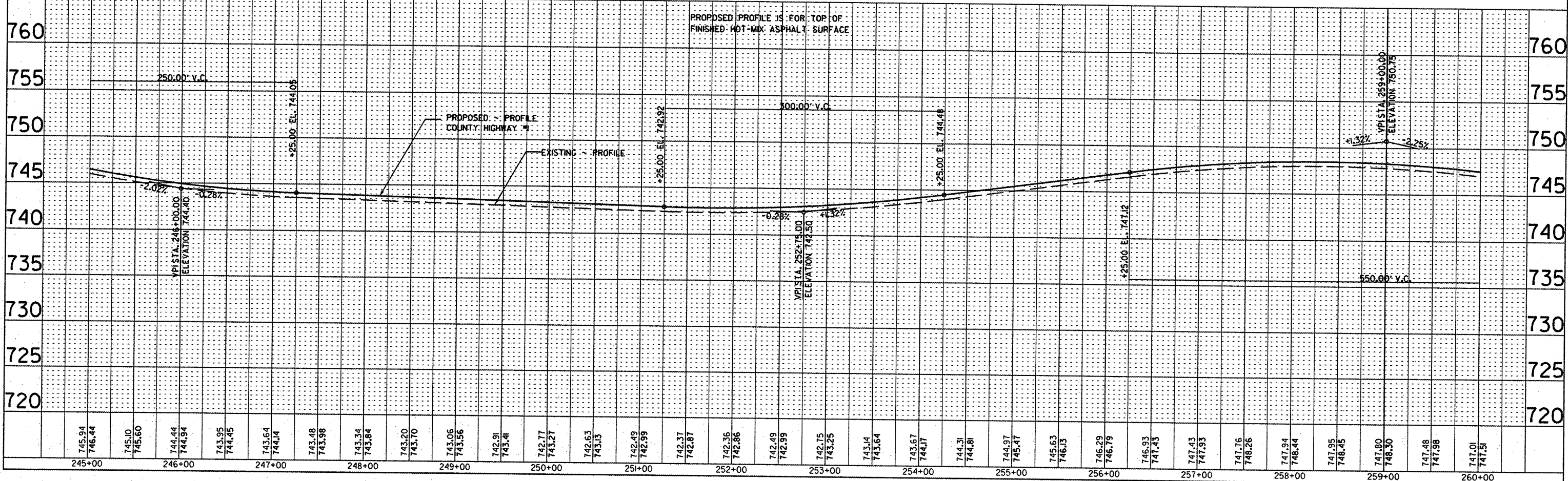
SILAS C. ZOISS

ROBERT L. KENNEL



H. SCALE: 1" = 50'
 V. SCALE: 1" = 5'

PROFILE	DATE	BY
SUBMITTED		
PLOTTED		
NOTE BOOK		
NO.		



DATE	DATE	DATE
745.94	746.44	745.10
744.44	744.94	743.95
743.64	744.14	743.48
743.98	743.34	743.84
743.20	743.70	743.06
743.56	742.91	743.41
742.77	743.27	742.49
742.63	743.13	742.99
742.37	742.87	742.49
742.36	742.86	742.99
742.75	743.25	743.14
743.64	743.64	743.67
744.17	744.17	744.31
744.81	744.81	744.97
745.47	745.47	745.63
746.13	746.13	746.29
746.79	746.79	746.93
747.43	747.43	747.43
747.93	747.93	747.16
748.26	748.26	747.94
748.44	748.44	748.45
748.95	748.95	748.80
749.45	749.45	747.48
749.80	749.80	747.98
748.30	748.30	747.01
747.48	747.48	747.51