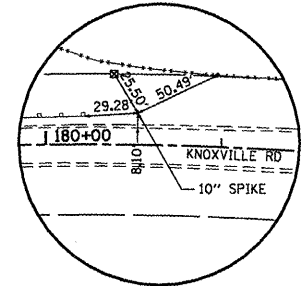
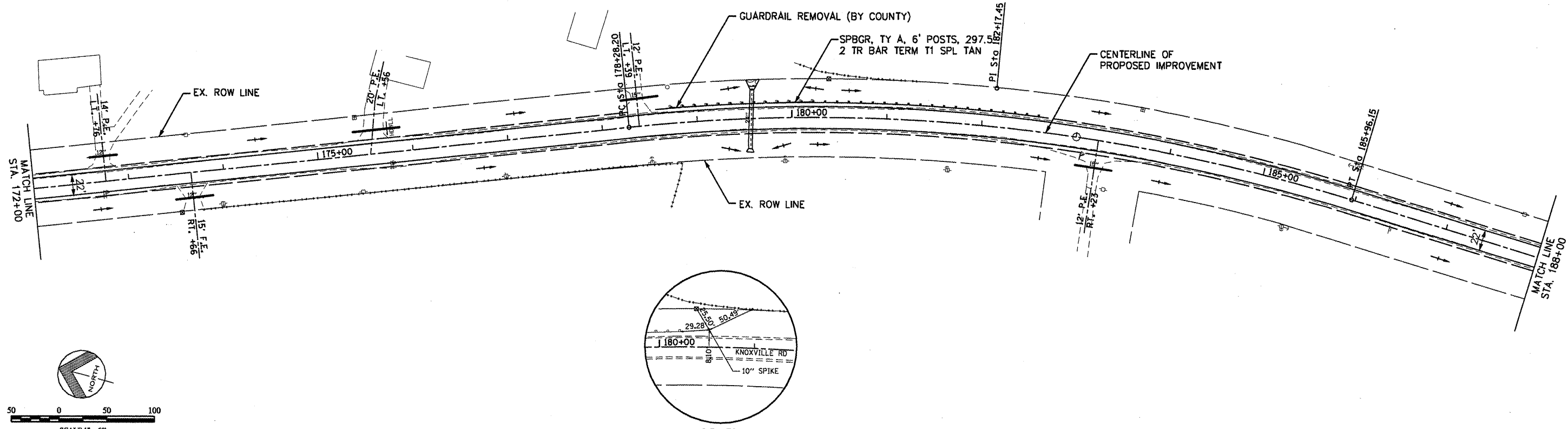


F.A.S. RTE.	SECTION	COUNTY	TOTAL SHEETS	SHEET NO.
206	95-00094-03-GR	MERCER COUNTY	11	6
STA. 172+00 TO STA. 188+00				
FED. ROAD DIST. NO. 7 ILLINOIS				



C.P. 36
180+52

Station	Elevation	Notes
172+00	745.68	
172+00	746.04	
173+00	744.88	
173+00	745.13	
173+00	743.95	
173+00	744.17	
174+00	743.04	
174+00	743.20	
174+00	742.09	
174+00	742.24	
174+00	740.96	
174+00	741.27	
175+00	739.84	
175+00	740.31	
175+00	738.92	
175+00	739.35	
175+00	737.88	
175+00	738.38	
175+00	736.84	
175+00	737.42	
175+00	735.95	
175+00	736.50	
175+00	735.15	
175+00	735.68	
176+00	734.43	
176+00	734.96	
176+00	733.82	
176+00	734.34	
176+00	733.13	
176+00	733.82	
176+00	732.70	
176+00	733.40	
176+00	732.37	
176+00	733.02	
176+00	732.03	
176+00	732.85	
176+00	731.78	
176+00	732.28	
176+00	731.40	
176+00	731.90	
176+00	730.97	
176+00	731.44	
176+00	730.34	
176+00	730.81	
176+00	729.58	
176+00	730.01	
176+00	728.72	
176+00	729.04	
176+00	727.61	
176+00	727.89	
176+00	726.35	
176+00	726.58	
176+00	724.79	
176+00	725.18	
176+00	723.11	
176+00	723.78	
176+00	721.65	
176+00	722.38	
176+00	720.43	
176+00	720.98	
176+00	719.10	
176+00	719.58	
176+00	717.89	
176+00	718.18	
176+00	716.67	
176+00	716.92	

TBM-109 TOP OF NORTH MOST I-BEAM POST OF GUARD RAIL ON EAST SIDE OF KNOXVILLE ROAD JUST NORTH OF C.P. 36 STA. 178+73.40 16.45' LT., ELEV. 735.39

TBM-110 PK NAIL IN POWER POLE ON EAST SIDE OF KNOXVILLE ROAD NORTH OF SWEDONA WHERE POWER LINE CROSSES FROM THE EAST SIDE OF ROAD TO THE WEST SIDE STA. 185+93.34 33.93' LT., ELEV. 724.73

Vertical Curve Data:
 1. V.C. 1: $e_x = 0.44'$, $k = 254$, $300.00'$ V.C.
 2. V.C. 2: $e_x = -0.77'$, $k = 146$, $300.00'$ V.C.

PROPOSED RESURFACING (FOR INFORMATION ONLY)
 EXISTING GROUND ALONG CENTERLINE

Grades:
 -1.93%
 -0.75%
 -0.75%
 -2.80%